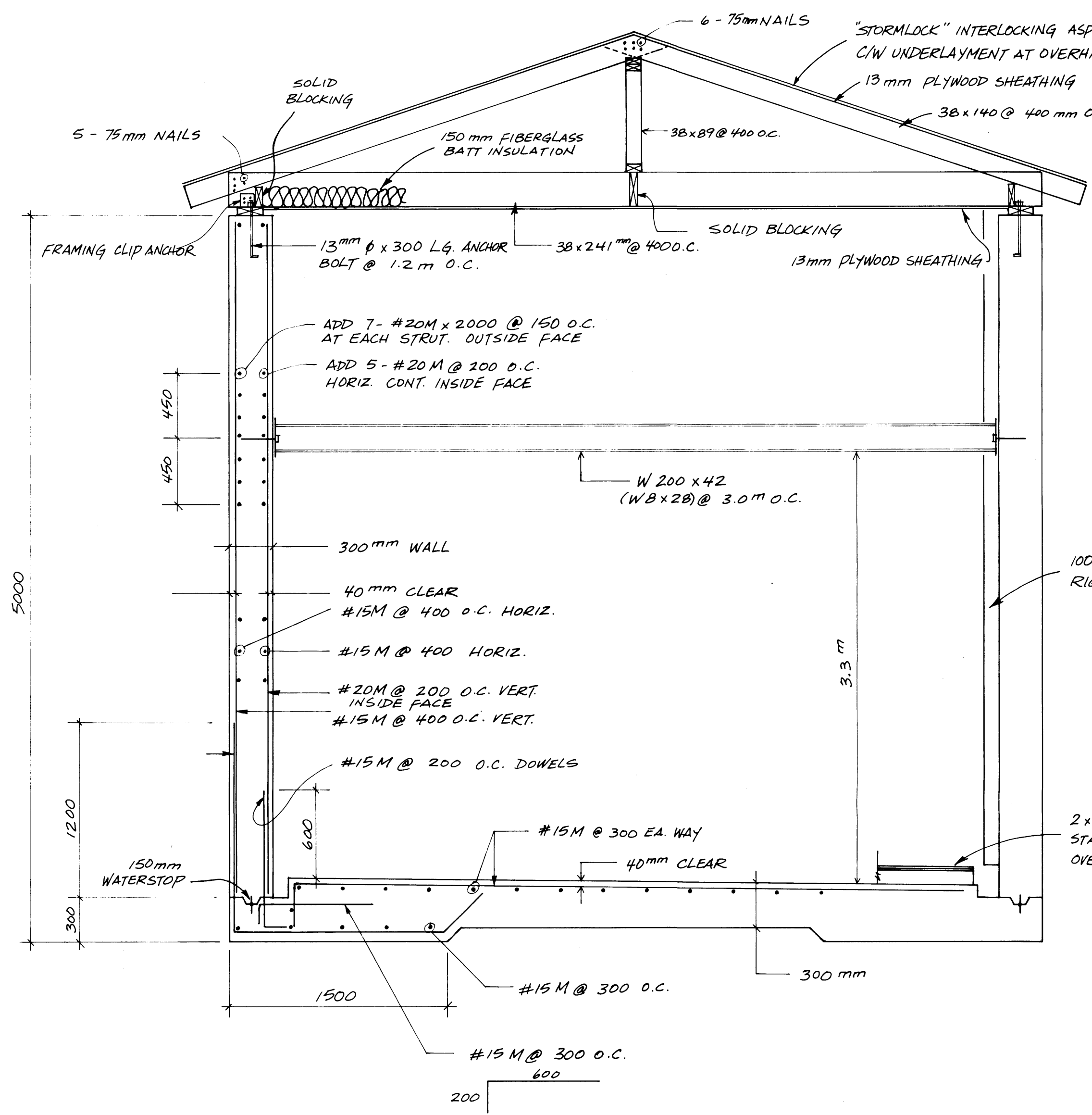
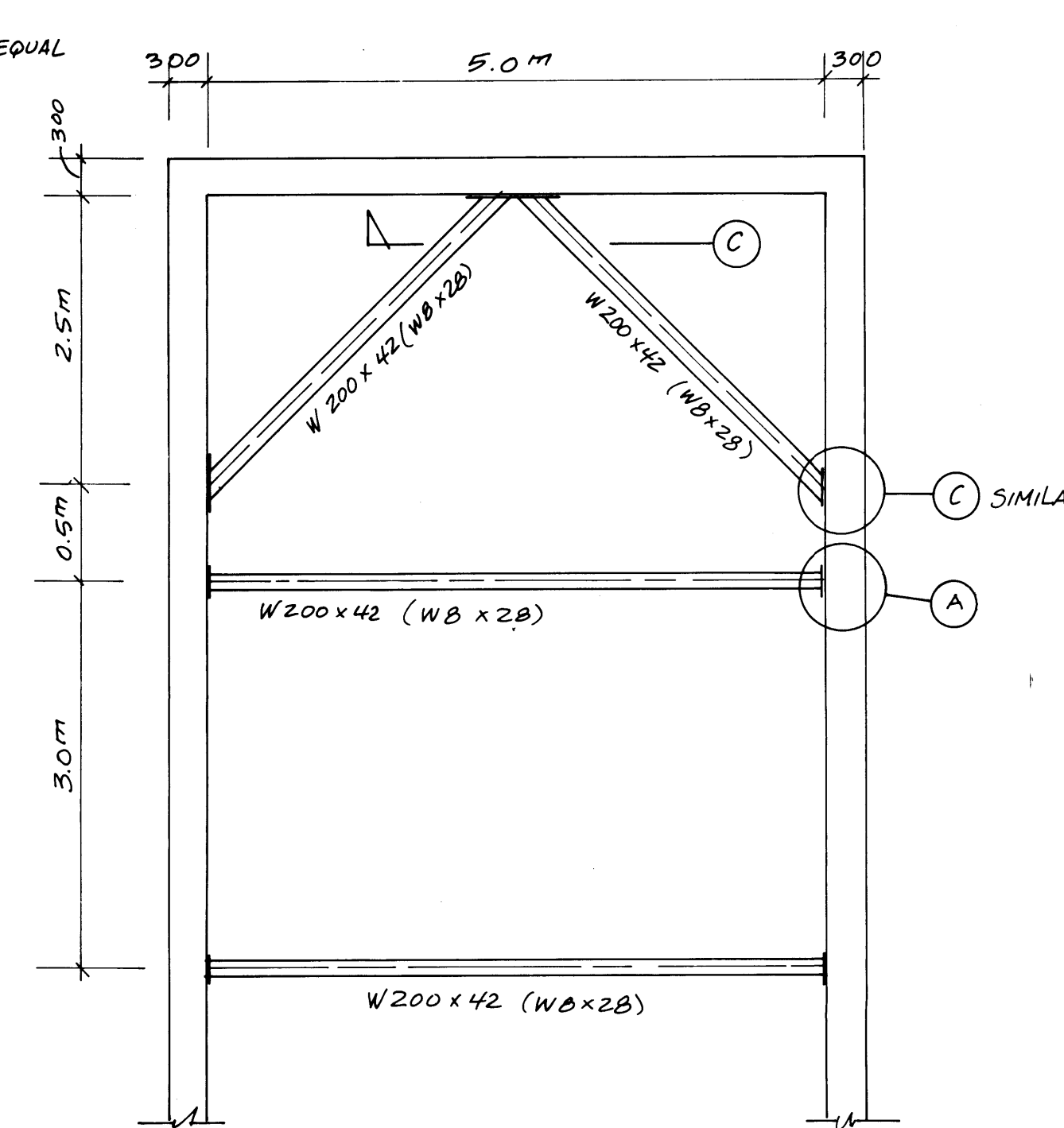


**PRELIMINARY**  
FOR DISCUSSION PURPOSES ONLY

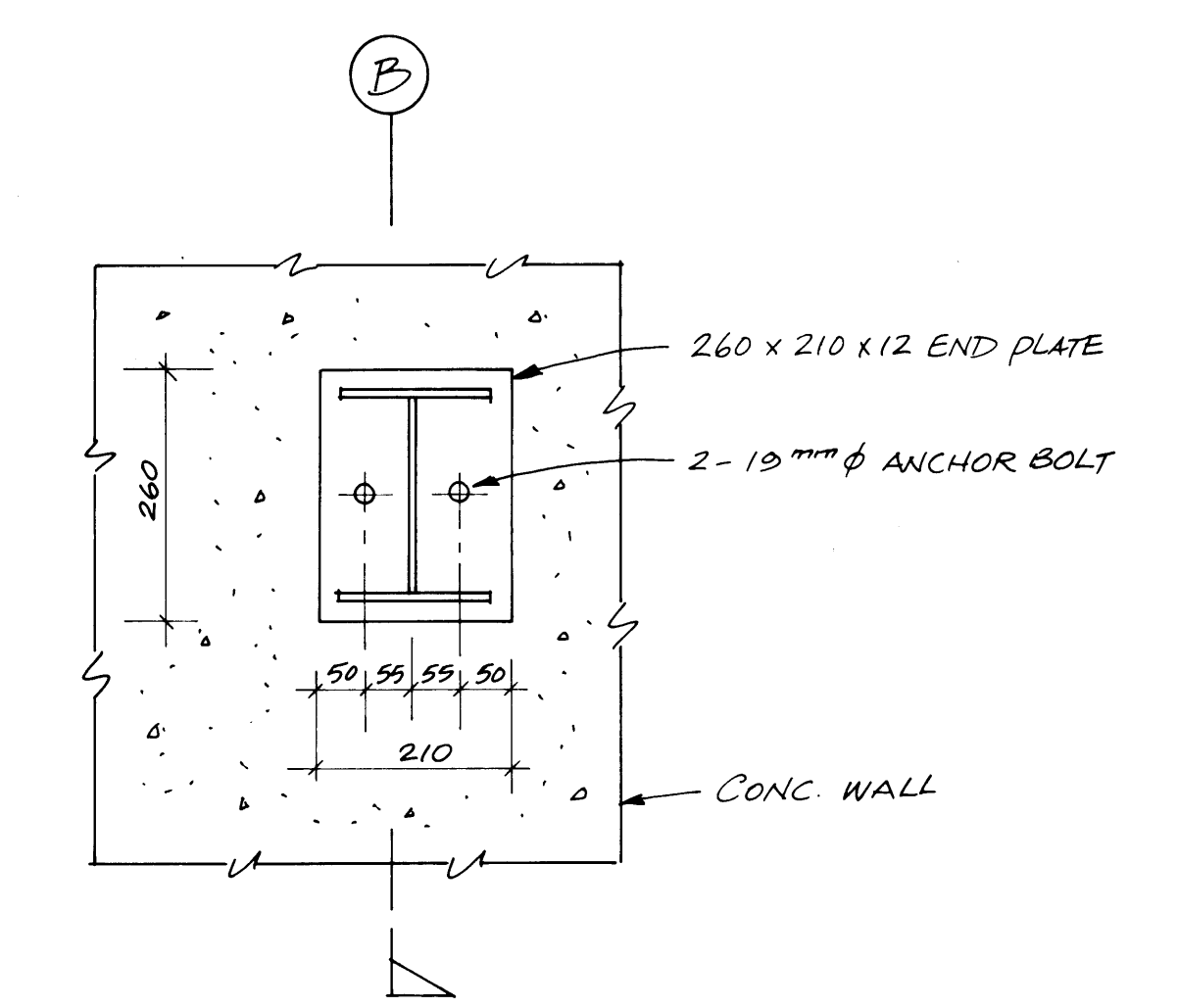


**CROSS-SECTION**  
1:250

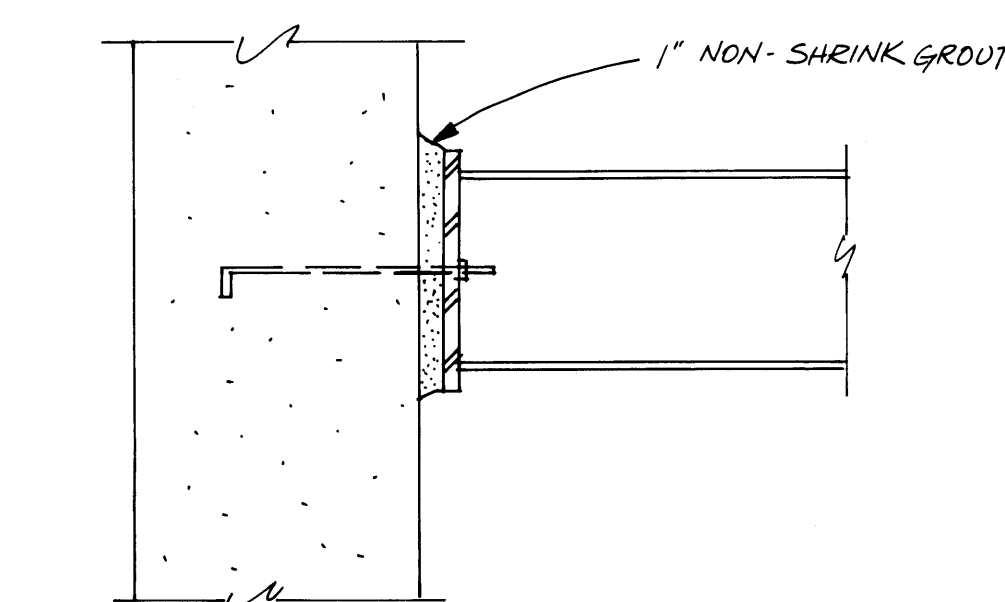
**PRELIMINARY**  
FOR DISCUSSION PURPOSES ONLY



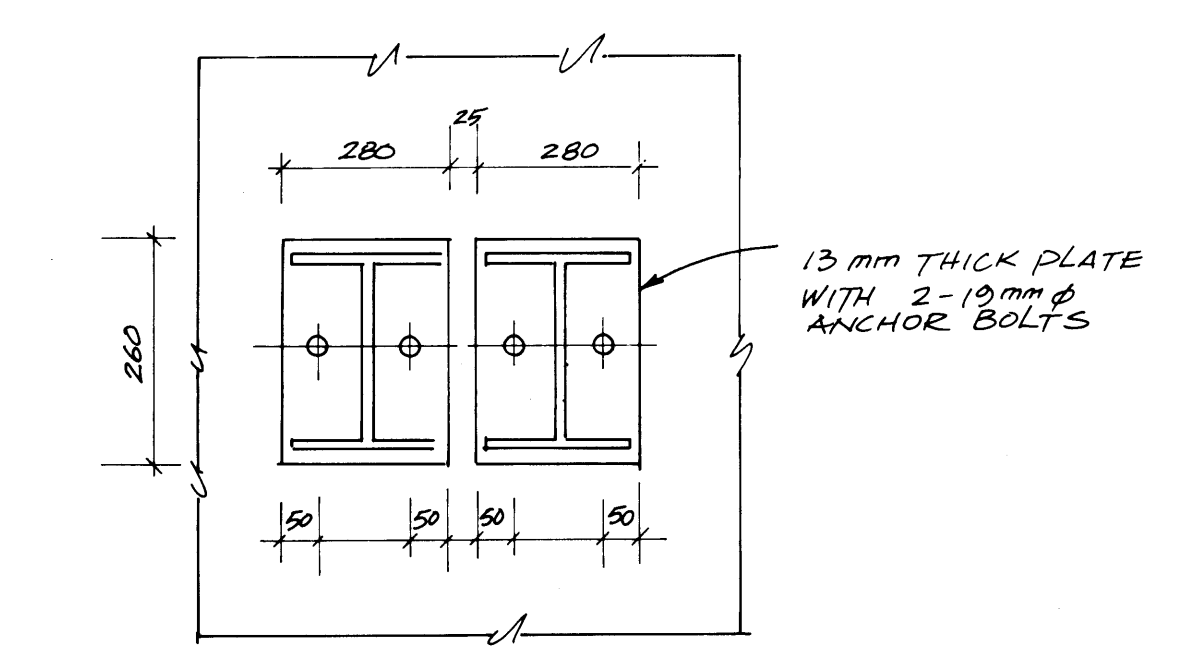
**PARTIAL PLAN AT**  
**END WALL OF TRENCH**  
N.T.S.



**SECTION A**  
N.T.S.



**SECTION B**  
N.T.S.



**DETAIL C**  
N.T.S.

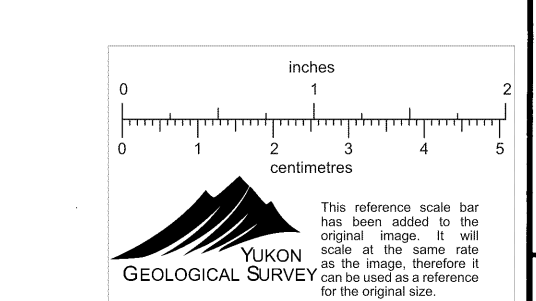
**CONCRETE**

- Concrete strength at 28 days:  
28 MPa (4,000 psi)
- Compressive strengths to be verified by an independent test according to CSA - A23 with copies of reports submitted to the engineer.
- Reinforcing bars shall be Grade 60 deformed steel (Fy - 60,000 psi, 400 MPa), sizes in metric designation except as noted.
- Concrete cover on reinforcing steel shall be:  
75 mm for concrete cast against earth  
50 mm for formed concrete exposed to weather and slabs-on-grade, unless noted on drawings.
- All lapped splices shall be 24 bar diameters (400 mm or 16" Minimum) or as shown.
- Horizontal steel to be continuous around the corners.
- Walls, columns and structural slab, to be well vibrated.

**STRUCTURAL STEEL**

- All welding shall be done by fabricators fully approved by the Canadian Welding Bureau.
- All structural sections shall conform to CSA G40.21-M300W (Fy = 300 MPa)
- All steel shall receive one shop coat of primer.
- Submit shop drawings to Consultant for review before fabrication.
- Anchor bolts to be A 307 and supplied by Steel Fabricator.

**PRELIMINARY**  
FOR DISCUSSION PURPOSES ONLY



<b>CURRAGH RESOURCES</b>		DATE MAY 1987
MINE TAILINGS ABANDONMENT PROGRAM TEST FACILITY - CIVIL		PROJ. NO.
ACCESS PASSAGEWAY - STRUCTURAL		APPROVED
007498		NO.
STEFFEN ROBERTSON & KIRSTEN, Consulting Engineers		