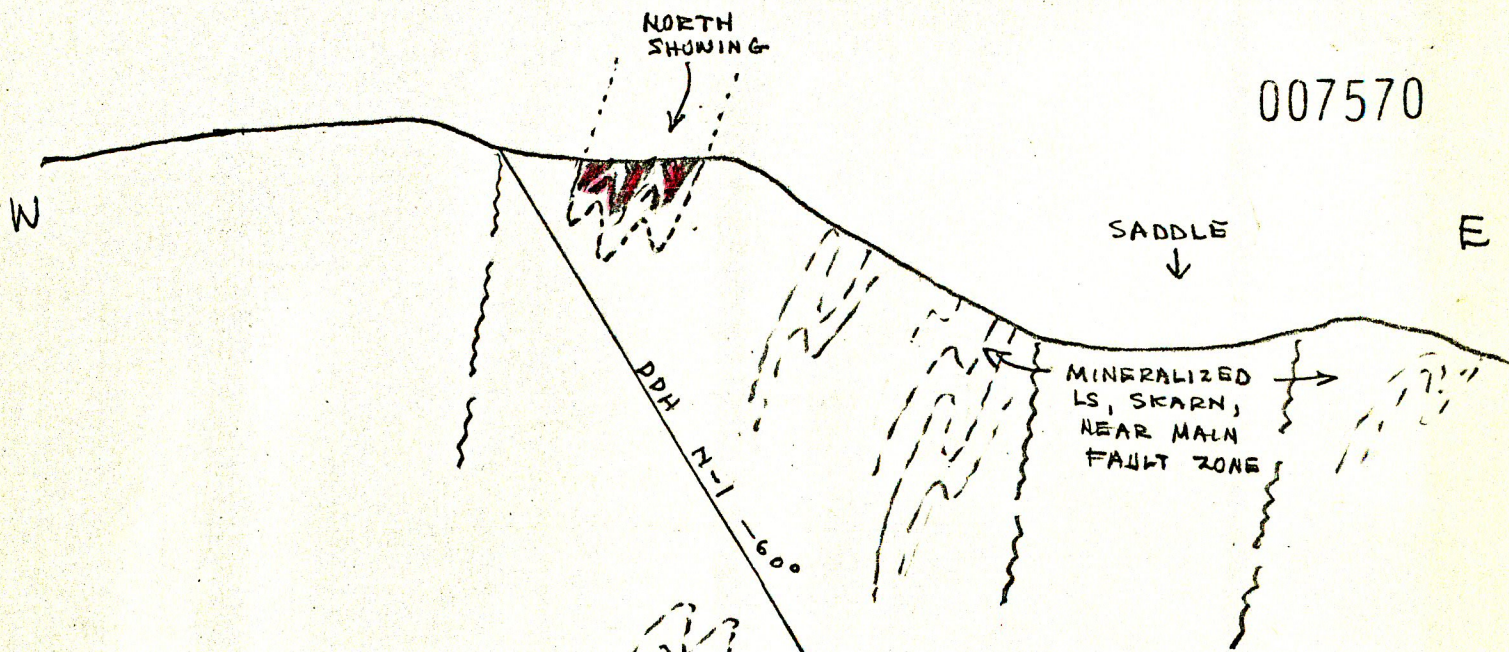
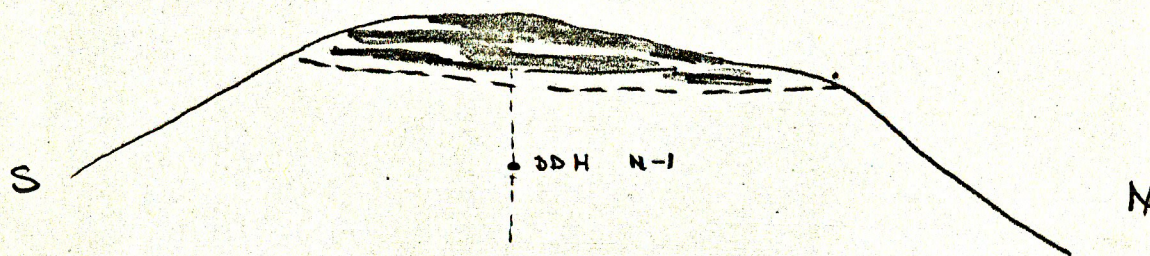


007570



DIAGRAMMATIC CROSS-SECTION
OF NORTH SHOWING
(NOT DRAWN TO SCALE)



DIAGRAMMATIC LONGITUDINAL SECTION

FIGURE 1
PROBABLE STRUCTURE OF NORTH SHOWING

AE AH0
JULY 2/63

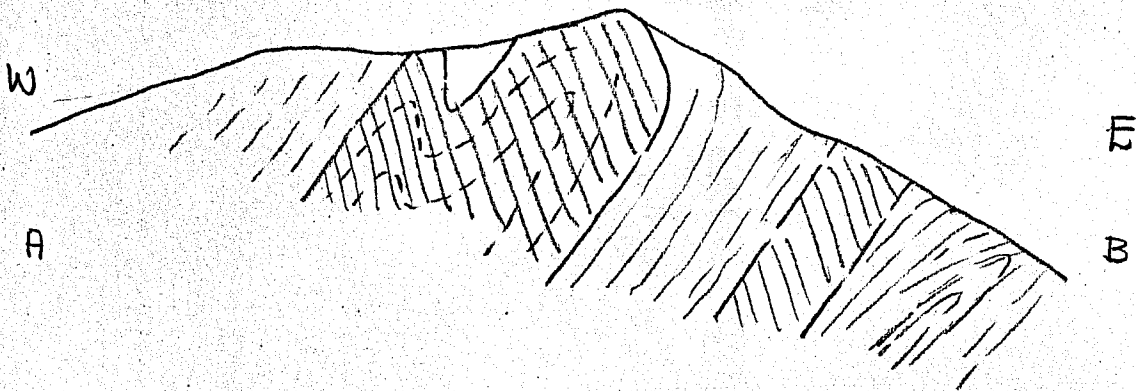
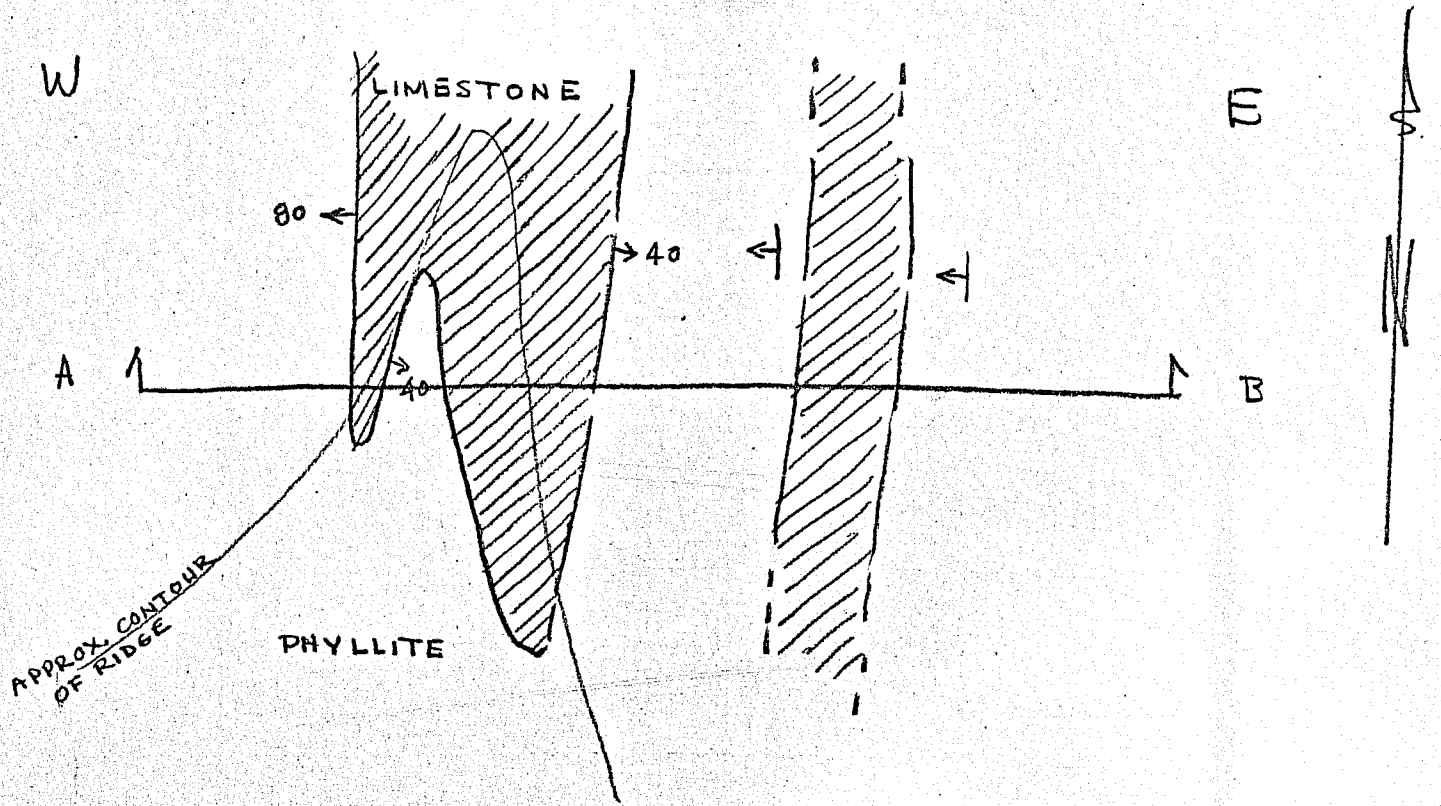
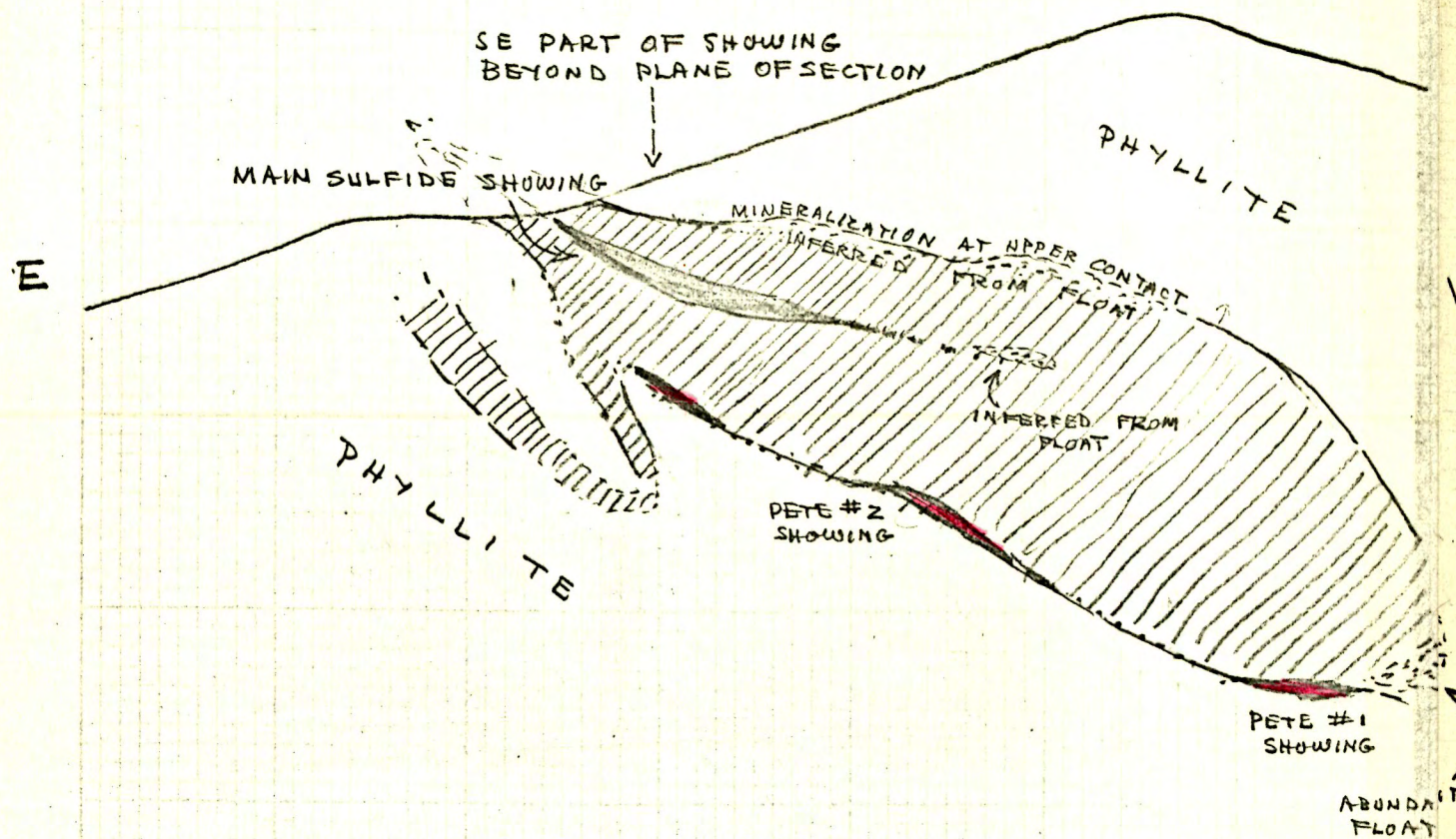


FIGURE 2

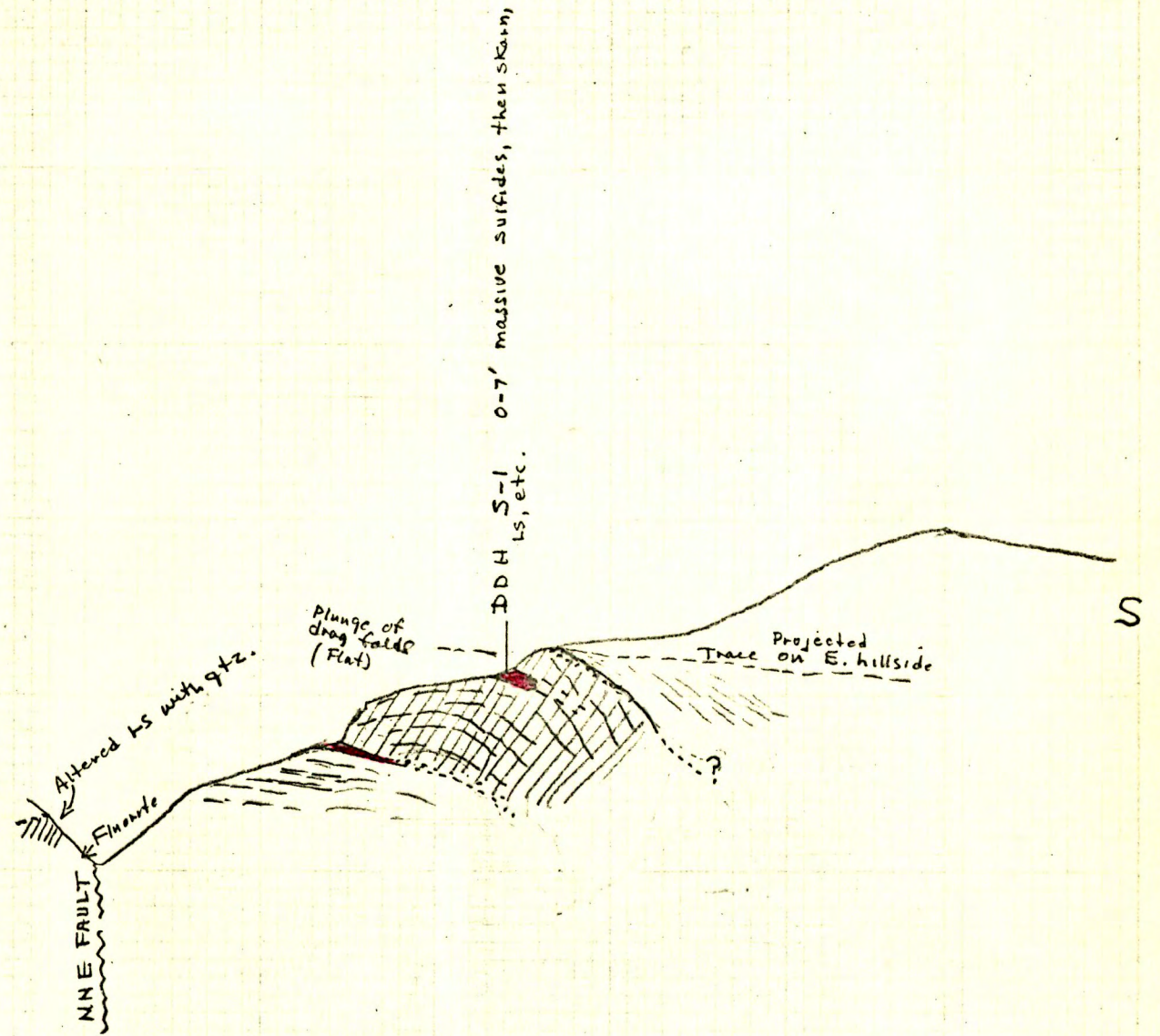
SKETCH OF PROBABLE TYPE OF STRUCTURE
 IN LIMESTONE NOSE
 NORTH OF NORTH SHOWING.
 MT. HUNDERE
 WATSON LAKE, V.T.
 (Not drawn to scale)

A. E. Aho

A. E. AHO
 JULY 2, 1963



DIAGRAMMATIC CROSS SECTIONS OF POSSIBLE STRUCTURE OF SOUTH SHOWING AT HUNDERER WILSON LAKE Y.T. A.E. Aho July 2, 1963



Notes:

- limestone pinches out as is unexposed to SE along surface trace of showings
- limestone w of showing dips into hill about 40-50° and w side appears to pinch out against phyllite.
- The structure may therefore be limited in extent but due to complexity of two directions of folding this must be determined by drilling and careful structural geology.