

007631

Tintina Mines Ltd.

Silver Property

Ross River Area
Yukon

Does not persist to
depth of more than
several hundred feet

Silver Prospects

Concessions: 1961

188 claims in four major groups.

Eagle claims: Most of the data. Good until 1987. The rest:

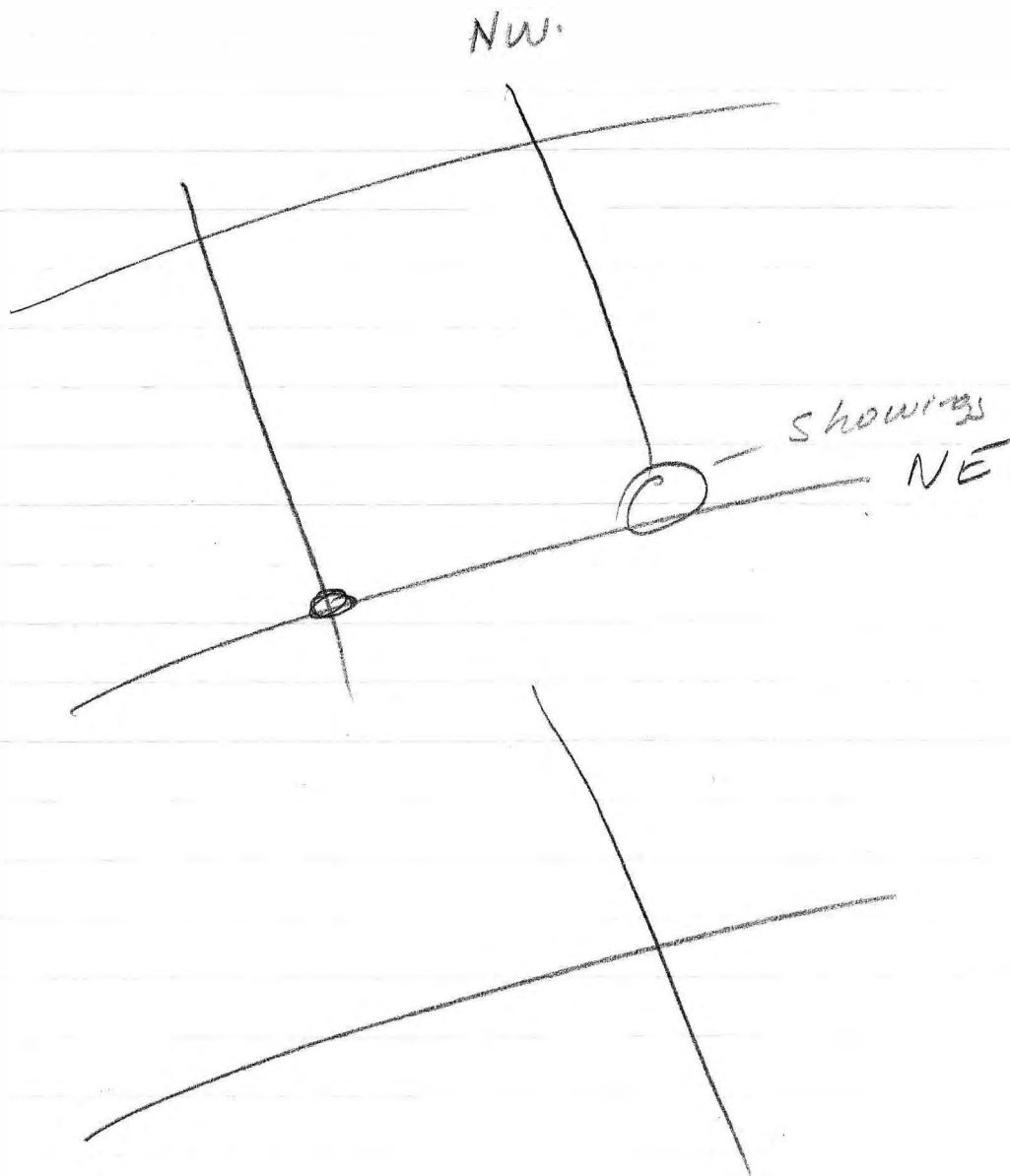
Limestone

Showings confined to limestone units close to the upper contacts with argillites.

Three limestone horizons, all three contains mineralization

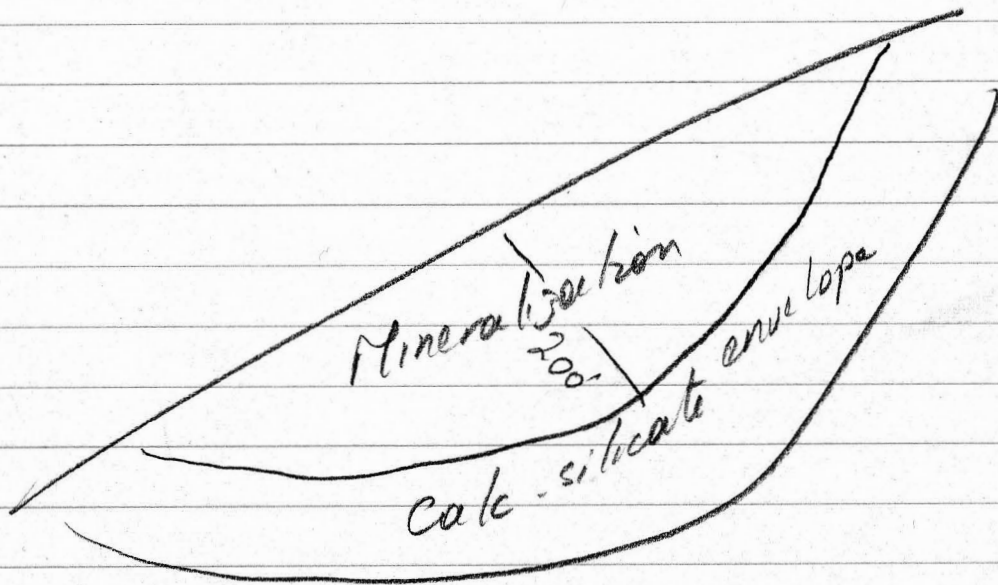
- ① Bacteria type
- ② Quartz veins - gold bearing ~ 0.05 oz/ft.
- ③ Replacement type
- ④ Stratobound (one locality, showing No 13)
1.5' - 2' wide. Lower silver than the replacement type.

Gold-bearing sulphides (arsenopyrite) in argillite units.



Mineralization related to NE trending lineament.

Zinc Rim
Lead zinc core



Total stratigraphic thickness of
The limestone: 400 feet

Possible width of envelope: 100-200 feet

Strike length. The length of NE trending
faults.

$$100 \times 400 \times 2000$$

$$\frac{20,000,000}{12} = 1.5 \text{ m.}$$