

# KERR ADJISON MINES LIMITED

(FOR INTER-OFFICE USE ONLY)

Gen 101

OCT 05 1973

To G. M. Hogg From W. M. Sirola 007701

Subject LYN GROUP - NEWMONT LETTER  
(BOB SHELDON) DATED SEPTEMBER 19, 1973 Date October 3, 1973

I meant to call your attention to Bob's statement in paragraph 3 of this letter. The sentence reads "This anomaly is the one that you attempted to probe with hole 72-1. Unfortunately this hole is collared at the peak of the anomaly and drilled northward in rocks with apparent shallow dips to the south with the result that the anomaly is not adequately tested". As you know this is not a statement of fact. The drill hole number (ours) was 71-1 and the hole was vertical. The choice of vertical hole versus incline hole may be open to debate but in theory at least, the drill hole was correctly placed.

J.H.S.
P.M.K.
G.M.H. ✓
R.D.S.
B.C.B.
I.D.B.
M.D.R.
J.H.F.
E.C.J.

After sending you a map of the gravity anomaly on line 182W 20N, I have examined the Galeski profiles of that line and two adjacent lines and it is now my view that the computer contouring done by Newmont was based on such fragmentary evidence that the anomaly is really a figment of the computer's imagination. If you look at the attached profile of line 182, you will see that several readings were missed entirely (probably due to swampy ground) and that the change in the level of the readings is too abrupt at 22N to be credible. Even if we reasoned that there are as many as four consistent readings both in the upper and lower parts of the graph, the fact remains that on lines 178 and 186 there is no evidence of anomalous gravity and we would then have to assume a narrow northeast-southwest structure which would have limited tonnage. It is true that there is a geochemical anomaly coincident with the gravity anomaly ? on line 182 but geochemical anomalies as such are not surprising in the light of the amount of mineralized float found on the property.

We could evaluate this situation for something in the order of \$2000. but my recommendation is now that we farm the property out to Anvil if they are still interested.

*I agree with Bill Sirola's recommendation, and shall instruct him to contact Anvil as to possible options.*

WMS/rb

*W.M. Oct 5/73.*

*Bill*

W. M. Sirola

Enclosures

- (1) Galeski gravity profiles of lines 178 to 186W
- (2) 400 scale plan showing location of Newmont computer anomaly on line 182W 20N.



Lyn Line 178W



Lyn-L 182 N

741

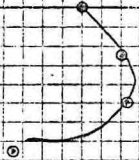
742

743

744

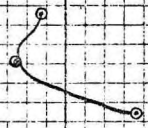
745

14 N



18 N

NR

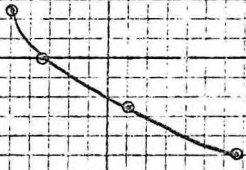


22 N

NR

.

NR



26 N

30 N

Lyo L 186W

