

KERR ADDISON MINES LIMITED

(FOR INTER-OFFICE USE ONLY)

See 101

OCT 01 1973

To G. M. Hogg

From W. M. Sirola

007702

Subject LYN GROUP, MAGUNDY RIVER AREA, YUKON TERRITORY Date September 28, 1973

Attached to this memorandum is a copy of a letter from Bob Sheldon of Newmont declining any interest in further work on the Lyn Group. Also attached is a composite residual gravity map made up of part of Newmont's computerized residual map and a portion of Overland's 1970 gravity survey. We were not initially particularly interested in Newmont's or Overland's observations because the Newmont anomaly on Lyn No. 124 was assembled from somewhat dubious data obtained from Galeski's gravity survey of 1971 and because the Overland data has been found to be faulty in the past. The Galeski gravity work normally is good but in this case the terrain was swampy and it must have been difficult for the operator to steady the meter. We became interested however when we found that however suspect gravity work might be, it had nevertheless coincided almost exactly with a 300 PPM zinc contour and a 100 PPM lead contour. While these values in lead and zinc are not spectacular similar values were quite diagnostic at Swim Lakes and hence should not be ignored here. However suspect the gravity values might be there is obviously something going on from a density standpoint and it should be investigated. This can be done in one of two ways: (a) we contract the work ourselves, or (b) we farm the property out to Anvil Mining who have twice expressed an interest in looking at the data. My suggestion would be to wait until the ground freezes and have the work done ourselves.

J.H.S.	
P.M.K.	<input checked="" type="checkbox"/>
G.M.H.	<input checked="" type="checkbox"/>
R.D.S.	
B.C.B.	
L.D.B.	
M.D.R.	
J.H.F.	
(E.C.)	

We now have a second copy of Cyprus's exploration work on the property done in 1972. That report is also enclosed.

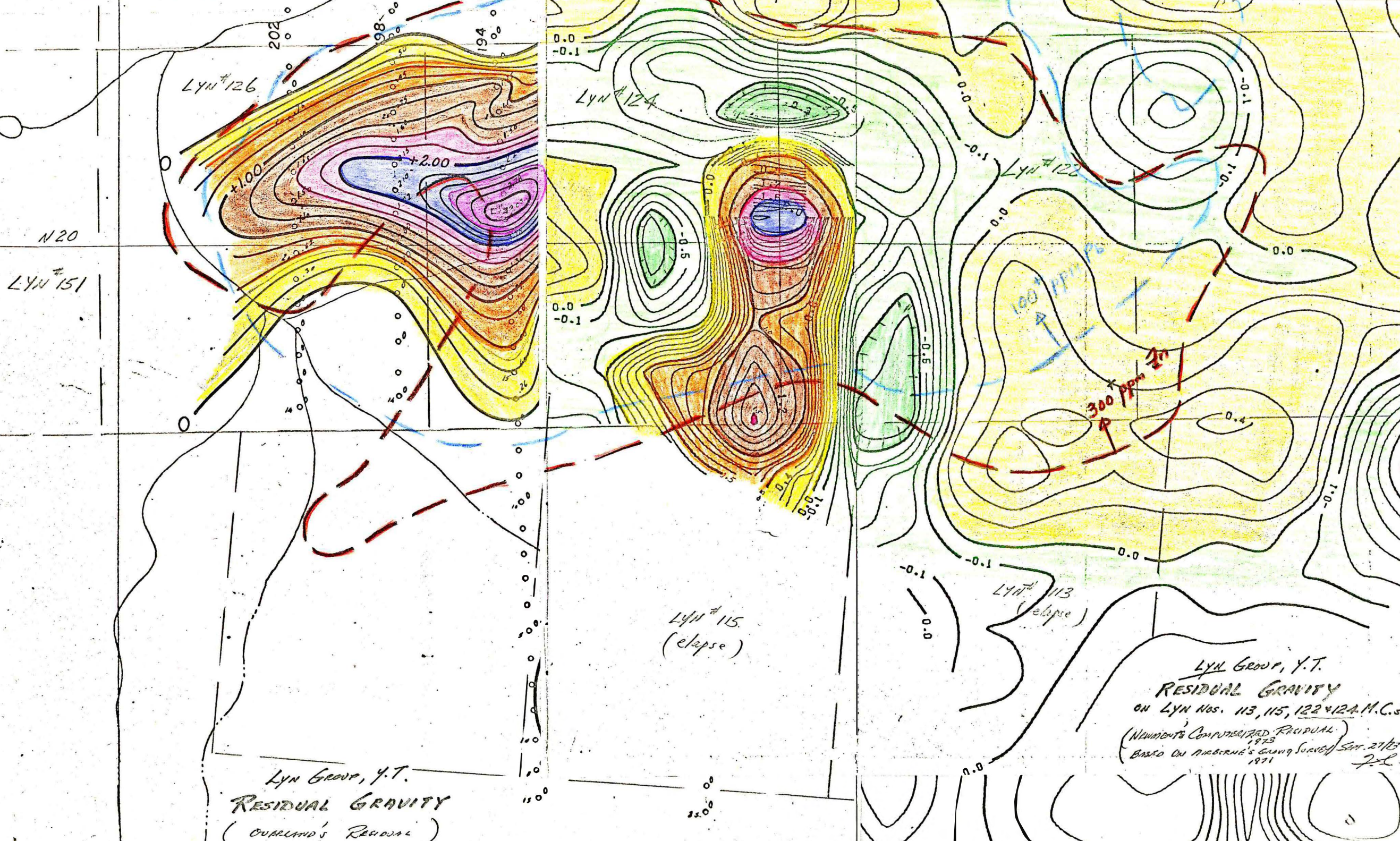
W.M. Sirola / RB
W. M. Sirola

WMS/rb

Enclosures (3)

I will discuss this matter further with W. Sirola. It may warrant further consideration.

MS Oct 2/73.



N20
LYN #151

LYN #126

LYN #124

LYN #122

LYN #115
(eclipse)

LYN #113
(eclipse)

Lyn Group, Y.T.
RESIDUAL GRAVITY
(OURLAND'S RESIDUAL)
1970

Lyn Group, Y.T.
RESIDUAL GRAVITY
ON LYN Nos. 113, 115, 122 & 124 M.C.'s
(NEWBOLT'S COMPUTED RESIDUAL)
1973
BASED ON AIRBORNE'S GRAVITY SURVEY Sept. 27/67
1971
J.L.

NEWMONT MINING CORPORATION OF CANADA LIMITED

SUITE 1230
355 BURRARD STREET
VANCOUVER 1, B.C.

September 19, 1973.

Mr. W. M. Sirola,
Kerr Addison Mines Ltd.,
Ste. 405 - 1112 West Pender St.,
Vancouver 1, B. C.

Dear Bill:

Re: Lyn Property, Y.T.

Enclosed herewith are all the data you loaned us on the Lyn Group with accompanying copies of the check lists showing the material presented.

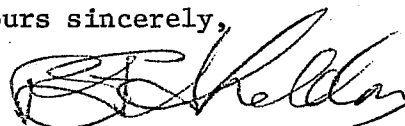
Working from the original field notes, our geophysical department processed the gravity data on a computer and removed the regional effect to produce residual gravity maps. We enclose copies of these maps together with an explanatory letter from Jack Parry, Danbury geophysicist, to augment your file of information on the property.

The residual gravity map produced at our Danbury lab indicates several small gravity anomalies but only one of sufficient area to be considered of possible economic interest. This anomaly is the one that you attempted to probe with Hole 72-1. *Unfortunately, this hole is collared at the peak of the anomaly and drilled northward in rocks with apparent shallow dips to the south with the result that the anomaly is not adequately tested. However, our geophysicists conclude that "due to the low amplitude of this anomaly, the shallow overburden encountered in the hole, and the lack of magnetic expression, the anomaly must be considered of academic interest".

I apologize for the length of time we have retained your data while awaiting the geophysical conclusions from a study of the original field notes. We appreciate the opportunity to review the property and only wish that we might have found justification for participation in further exploration of the claims.

With best regards,

Yours sincerely,



R. F. Sheldon
Exploration Manager
Western Division

* Not 50!
Hole # 15-71-1 (VERTICAL)

RFS:ng

Encs.

cc: P.M. Kavanagh (no encs.)