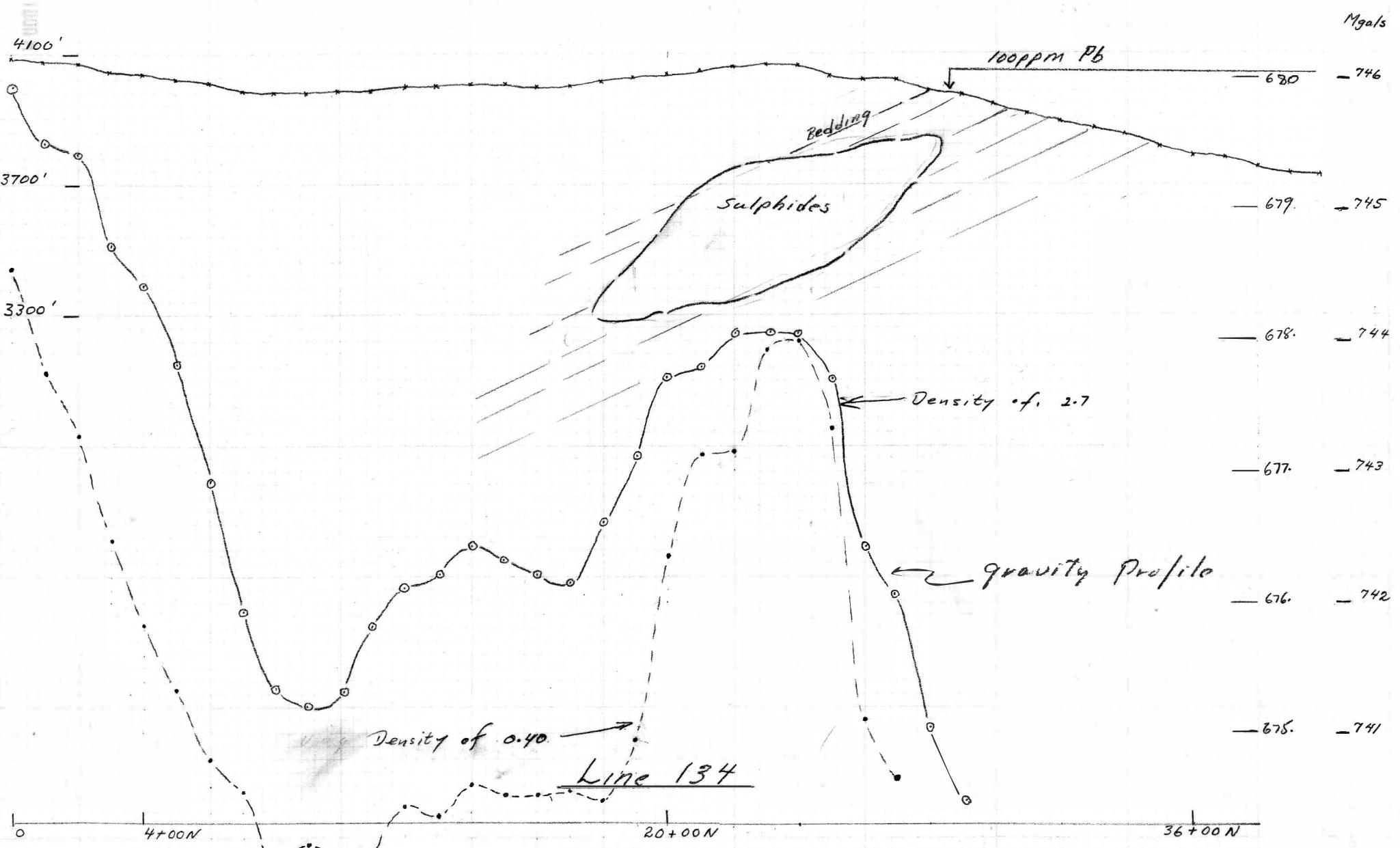


Kerr Addison Mines Ltd.  
 Gravity profile - Lynn Cl. V.T.  
 INTERPRETATION #1

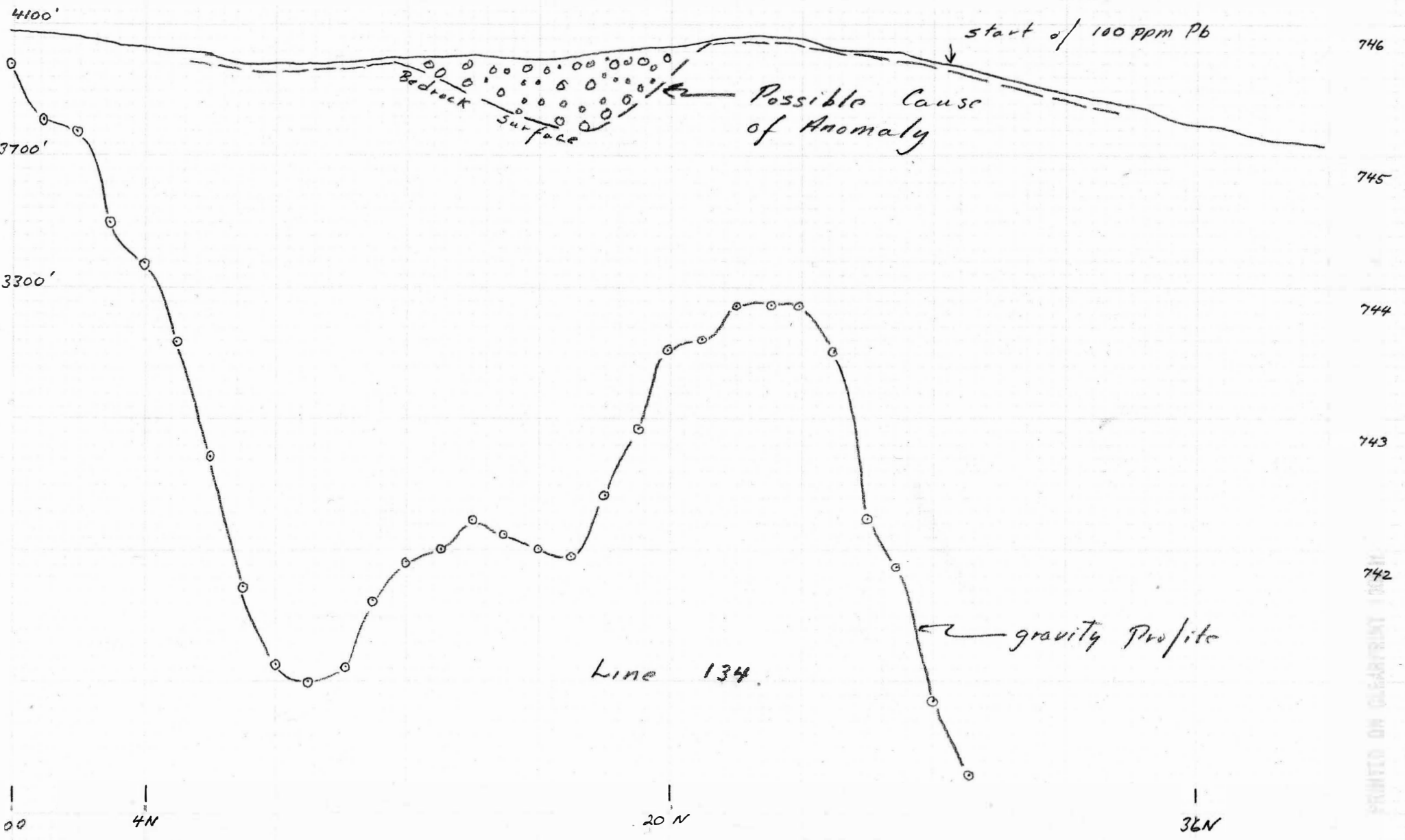
007729

1" = 400'  
 1" = 1 mgals.



Kerr Addison Mines Ltd.  
Gravity Profile - Lynn Cl. YT  
INTERPRETATION #2

Scale 1" = 400'  
1" = 1mgal.



PRINTED ON CLEARPRINT 100