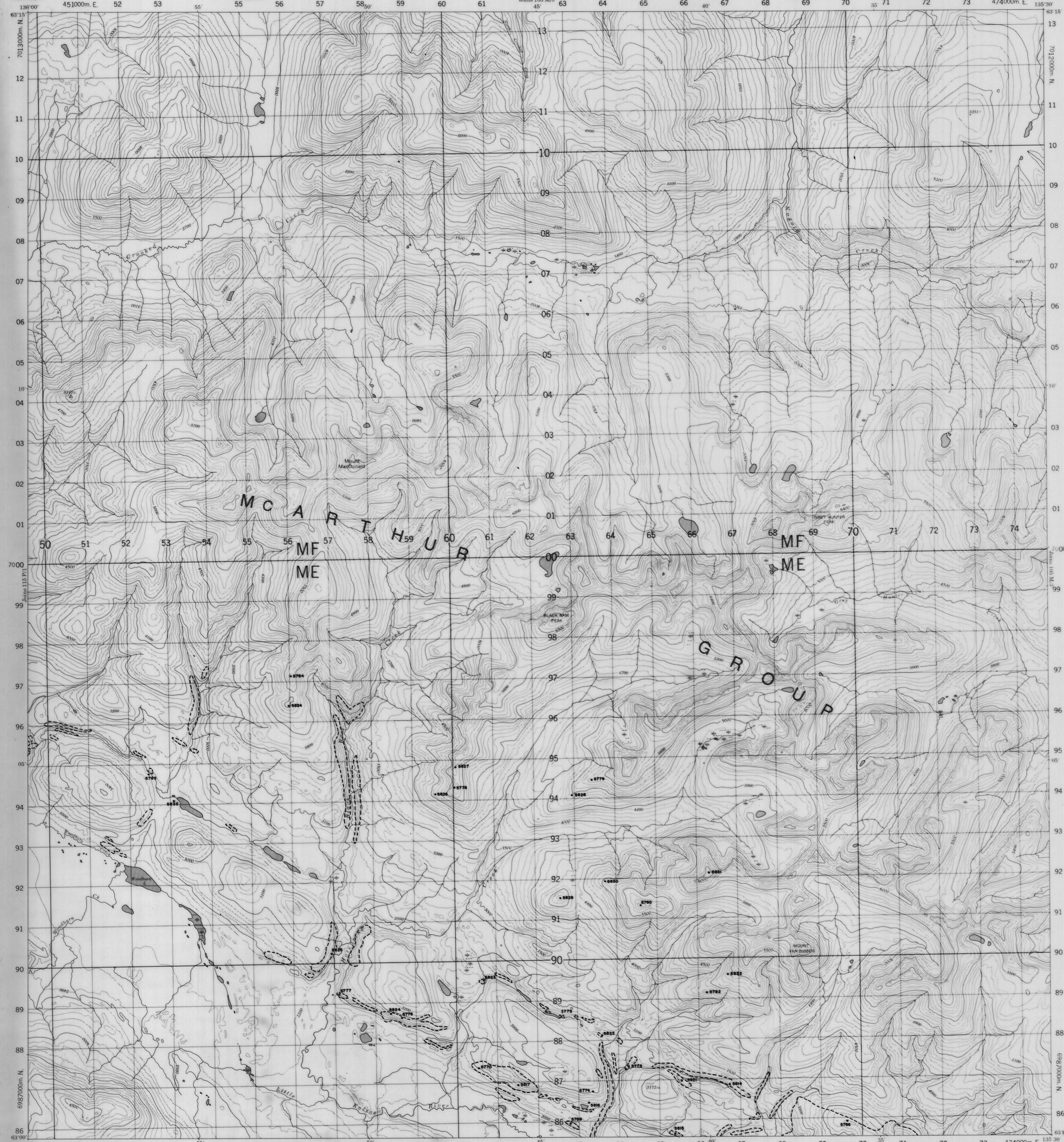
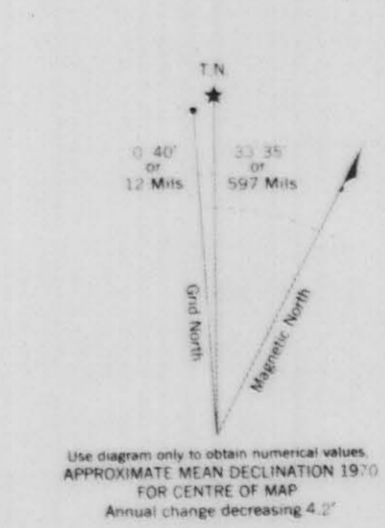
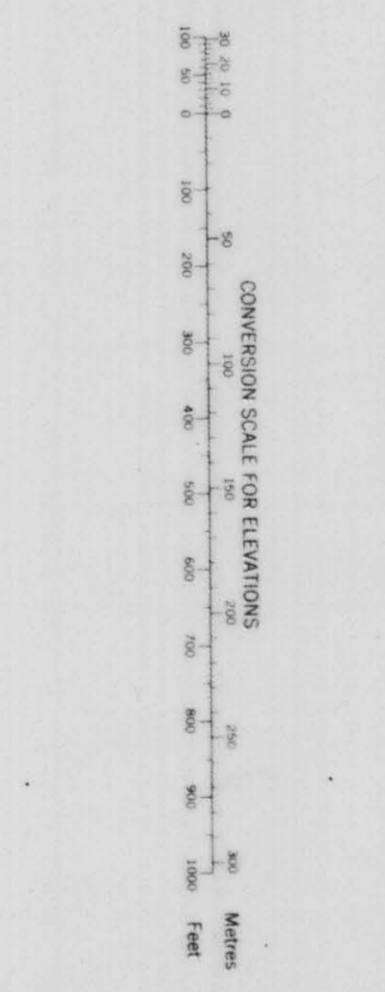


007817

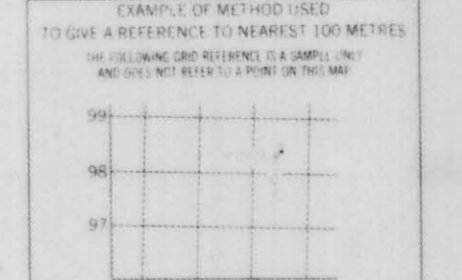
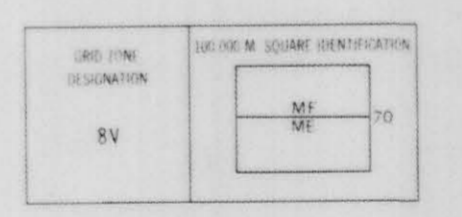
PROVISIONAL MAP 105 M/4 1:50,000 CANADA EDITION 1 CARTE PROVISOIRE 105 M/4 1:50,000



Refer to this map as: 105 M/4 EDITION 1 MEX SERIES A172



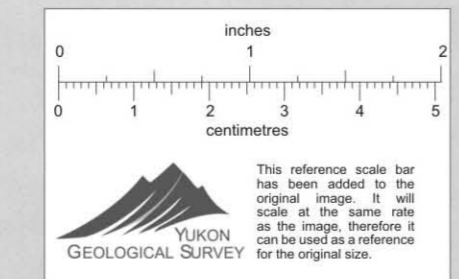
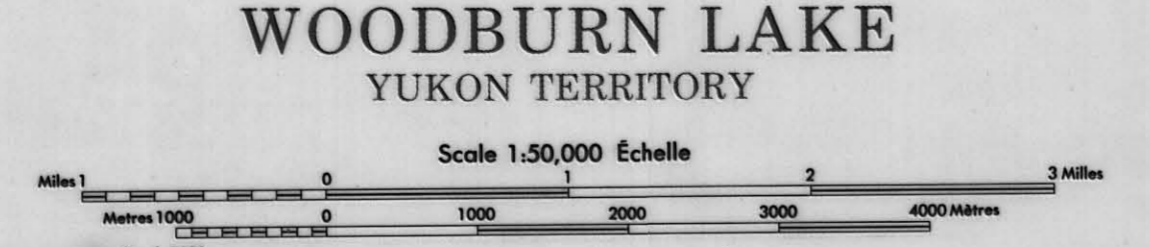
ONE THOUSAND METRE UNIVERSAL TRANSVERSE MERCATOR GRID ZONE 8



REFERENCE POINTS: EASTING, NORTHING, UTM COORDINATES. Example: 670000m E, 6920000m N.

Produced 1983 by the SURVEY AND MAPPING BRANCH, DEPARTMENT OF ENERGY, MINES AND TECHNICAL SURVEYS, CANADA. All rights reserved. Reproduction in any form is prohibited without the written permission of the Department of Energy, Mines and Technical Surveys.

This Provisional Map is equivalent to a standard map in accuracy of content. Some names and features are not official. Corrections or additions are subject to the Survey and Mapping Branch.



Cette carte provisoire équivaut à une carte régulière en ce qui concerne la précision de son contenu. Certains noms, caractères ou traits ne sont pas officiels. Les corrections ou additions sont soumises à la cartographie et au géo-arpenteur de la Division des levés et des cartes géologiques.

Éditée en 1983 par la DIRECTION DES LEVÉS ET DE LA CARTOGRAPHIE, MINISTÈRE DE L'ÉNERGIE, DES MINES ET DES RESSOURCES, CANADA. Tous droits réservés. Toute réimpression ou reproduction, sans la permission écrite du Ministère de l'Énergie, des Mines et des Ressources, est formellement interdite.

CYPRUS ANVIL MINING CORPORATION	
REVISED:	NTS: 105-M-4 DRAWN BY: c/c DATE: