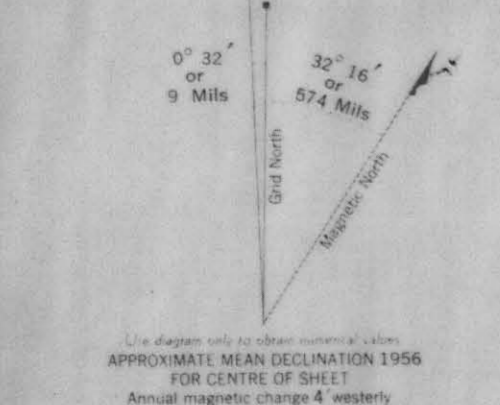
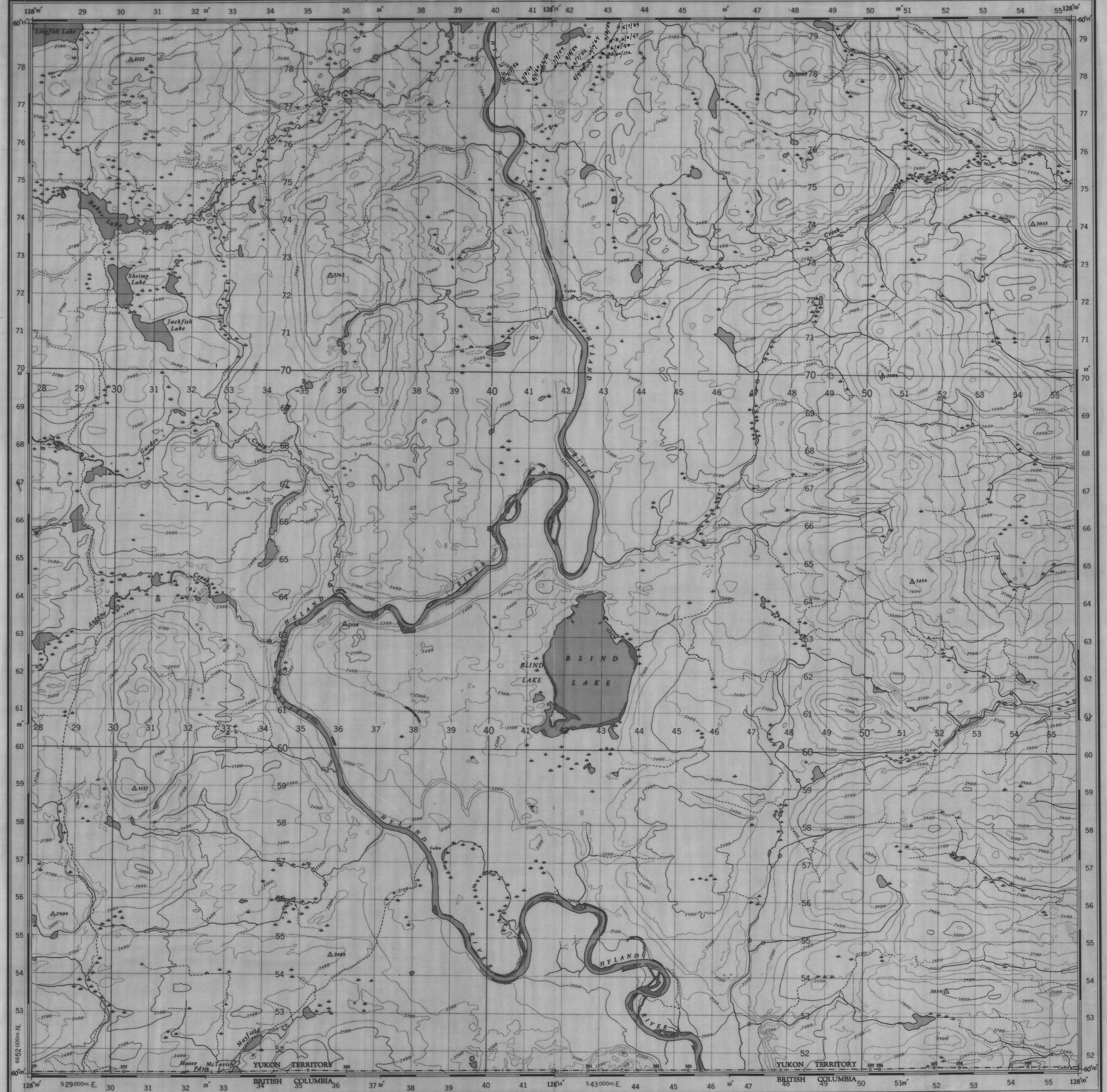


Sample Results
 1:50,000
 105 A/1
 RUPB 7/5
 ANV 22

007826

CANADA MINES AND TECHNICAL SURVEYS
 NATIONAL TOPOGRAPHIC SERIES 1:50,000
 CANADA, SHEET 105 A/1 WEST HALF
 CANADA MINES AND TECHNICAL SURVEYS
 NATIONAL TOPOGRAPHIC SERIES 1:50,000
 CANADA, SHEET 105 A/1 EAST HALF



TO GIVE GRID REFERENCE ON THIS SHEET
 FIGURES, INCHES OR MILLIMETRES, POINTED AROUND THE MARGIN
 OFFICES. THESE ARE TO BE USED IN CONNECTION WITH THE
 ON THE FACE OF THE MAP TO 5.22

POINT	CADRE
East	North
38	57
39	58
40	59
41	60
42	61
43	62
44	63
45	64
46	65
47	66
48	67
49	68
50	69
51	70
52	71
53	72
54	73
55	74
56	75
57	76
58	77
59	78
60	79
61	80

ONE THOUSAND METRE
 UNIVERSAL TRANSVERSE MERCATOR GRID
 ZONE 9

LOWER HYLAND
 YUKON TERRITORY

Scale 1:50,000
 1:25 inches to 1 Mile approximately

INDEX TO

LOWER HYLAND
 YUKON TERRITORY

Scale 1:50,000
 1:25 inches to 1 Mile approximately

INDEX TO

LOWER HYLAND
 YUKON TERRITORY

Scale 1:50,000
 1:25 inches to 1 Mile approximately

INDEX TO