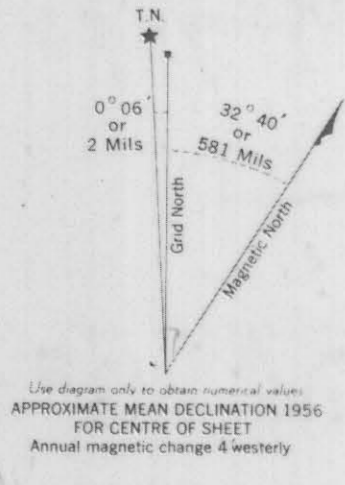
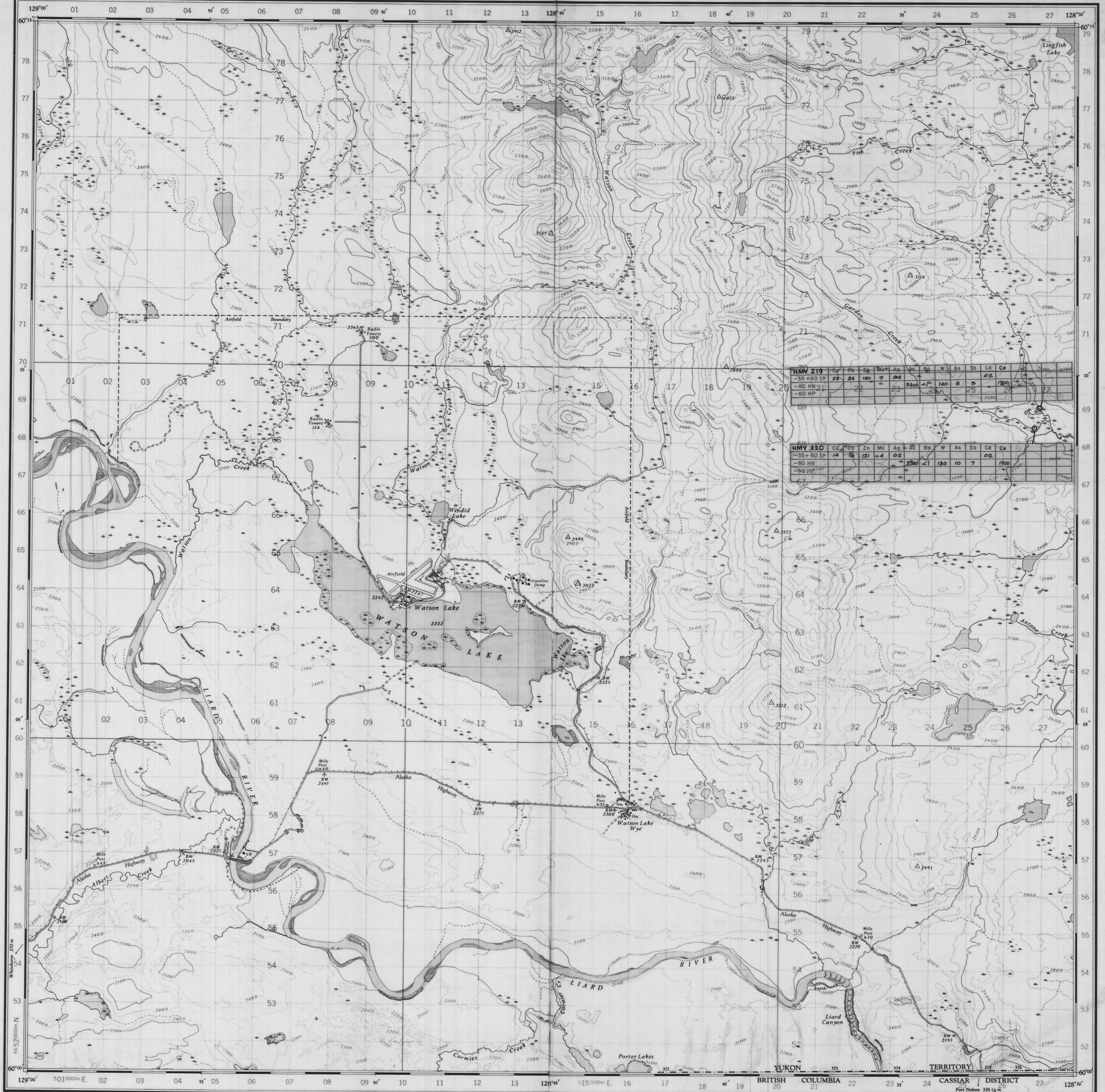


007827

CANADA MINES AND TECHNICAL SURVEYS
NATIONAL TOPOGRAPHIC SERIES 1:50,000
CANADA, SHEET 105 1/2 WEST HALF
CANADA, SHEET 105 1/2 EAST HALF



TO GIVE GRID REFERENCE ON THIS SHEET

PROJECTIONS: UTM (METERS) AND NAD 83 (METERS)

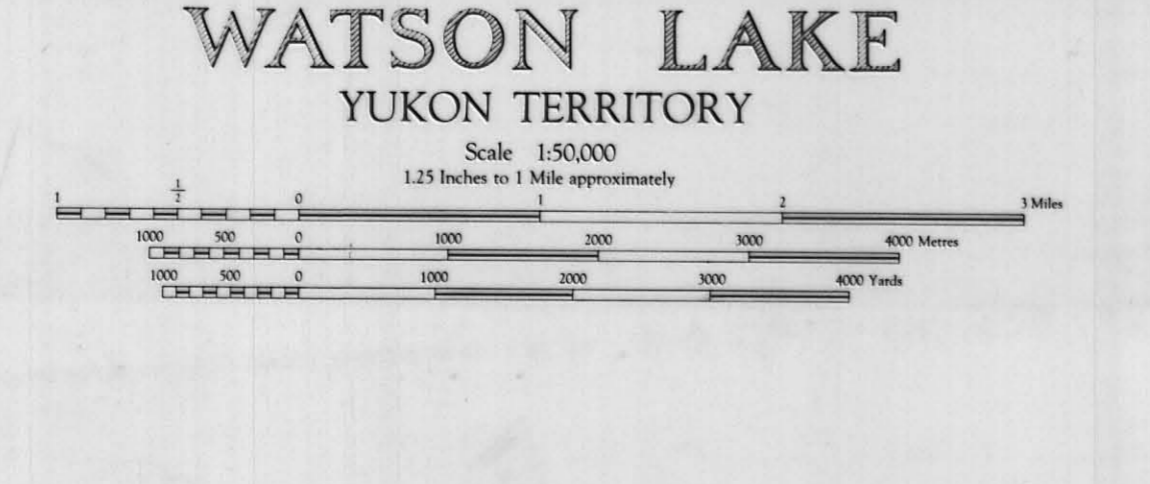
USE ONLY THE LATTER INDICATED PROJECTIONS IN THE MARGIN OF THE FACE OF THE MAP, V.L. 501

PROJ.	UNIT	COORDINATE
UTM	METERS	1000000
NAD 83	METERS	1000000
UTM	METERS	1000000
NAD 83	METERS	1000000

Surveyed, compiled, drawn and printed by the Army Survey Establishment, R.C.E. 1947-48. Annual magnetic change 4' westerly. Second edition published 1956.

Copyright reserved by the Map Distribution Office, Dept. of Mines and Technical Surveys, Ottawa.

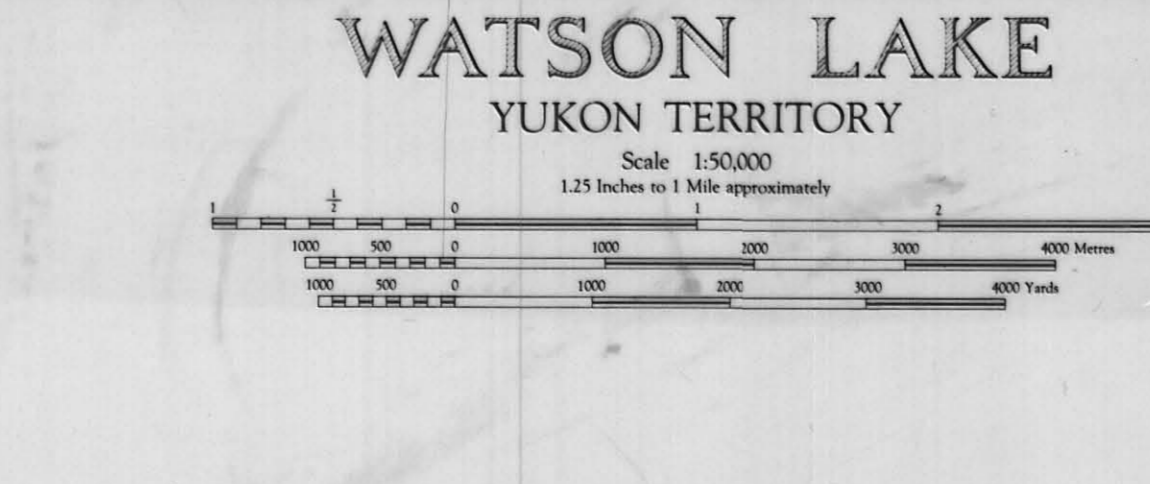
Scale 1:50,000
1:25 inches to 1 Mile approximately



Surveyed, compiled, drawn and printed by the Army Survey Establishment, R.C.E. 1947-48. Annual magnetic change 4' westerly. Second edition published 1956.

Copyright reserved by the Map Distribution Office, Dept. of Mines and Technical Surveys, Ottawa.

Scale 1:50,000
1:25 inches to 1 Mile approximately



Surveyed, compiled, drawn and printed by the Army Survey Establishment, R.C.E. 1947-48. Annual magnetic change 4' westerly. Second edition published 1956.

Copyright reserved by the Map Distribution Office, Dept. of Mines and Technical Surveys, Ottawa.

Scale 1:50,000
1:25 inches to 1 Mile approximately

IOISA

10	11	12	13
14	15	16	17
18	19	20	21
22	23	24	25

H - Heavy mineral sampling
S - Conventional stream sampling
G - Geological mapping

ANMAC PROJECT
HEAVY MINERAL SAMPLING
ALL VALUES ARE IN PPM - except Barite which is in % AND Au IN PPB.
June 19/1981 RWJ NTS 105-A-2