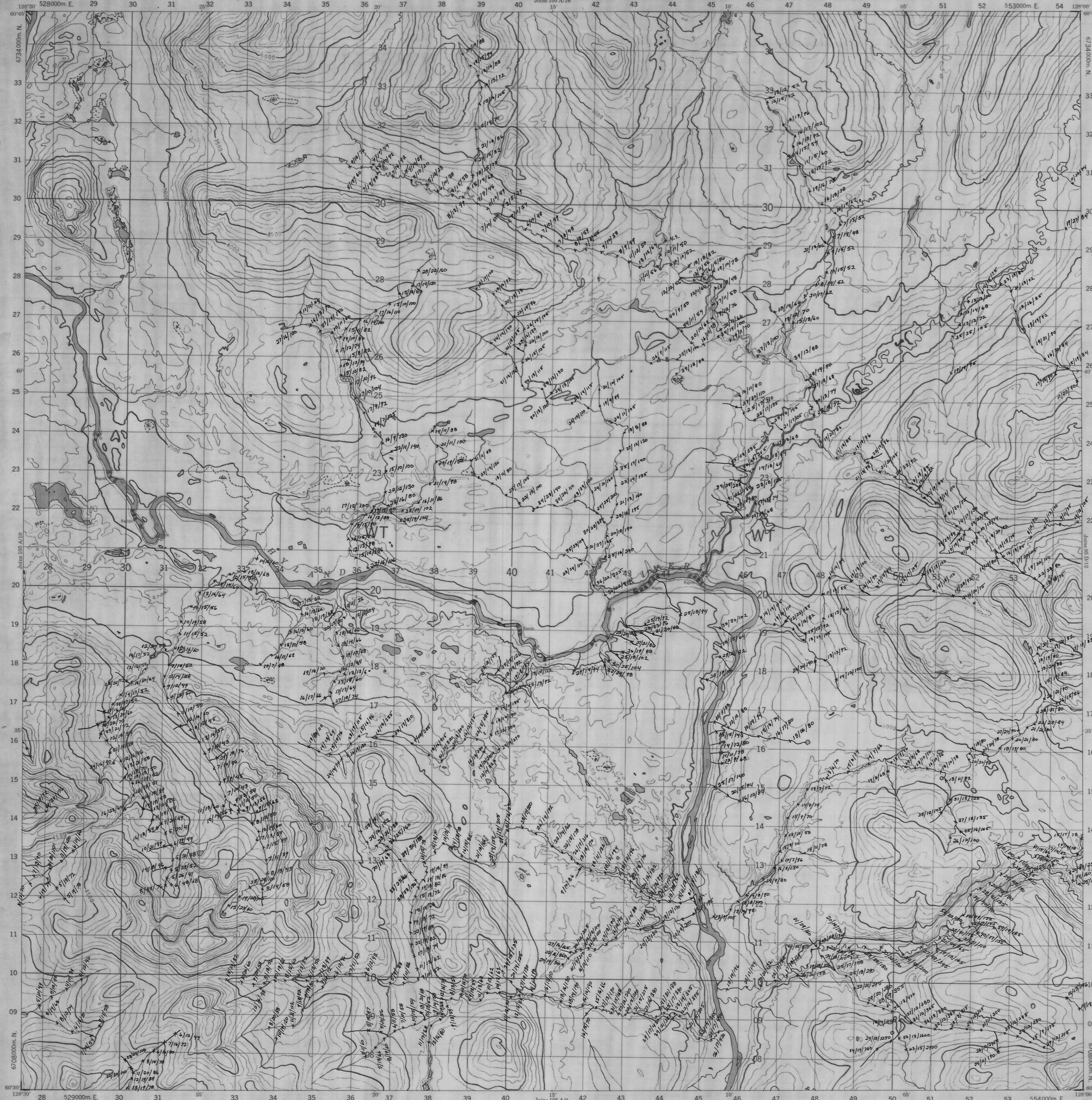
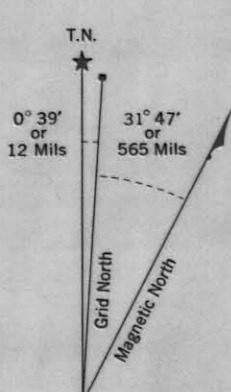
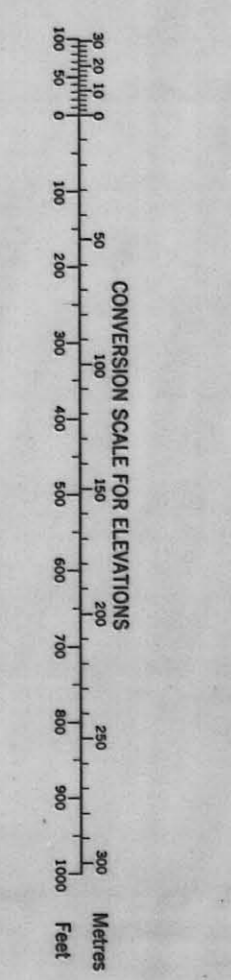


PROVISIONAL MAP 105 A/9 1:50,000 CANADA EDITION 1 CARTE PROVISOIRE 105 A/9

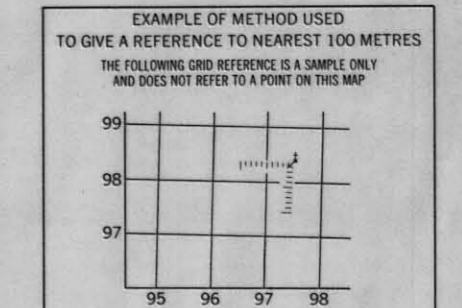
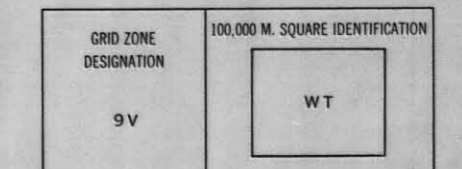


Refer to this map as: 105 A/9 EDITION 1 MCE SERIES A 722

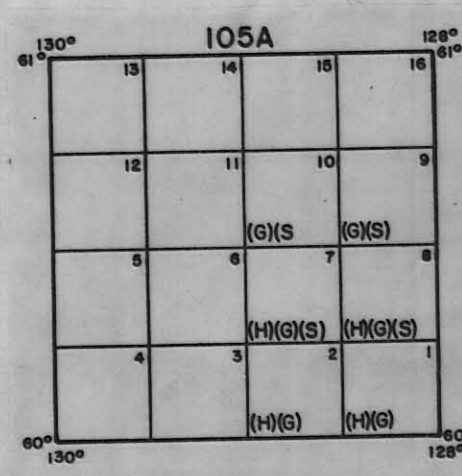


The diagram only to obtain numerical values. APPROXIMATE MEAN OCCULTATION 1965 FOR CENTRE OF MAP. Annual change decreasing 5.2"

ONE THOUSAND METRE UNIVERSAL TRANSVERSE MERCATOR GRID ZONE 9



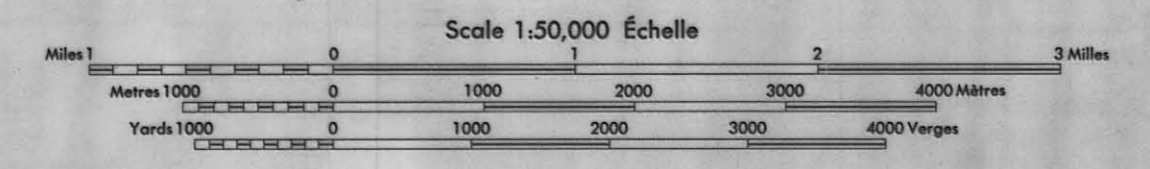
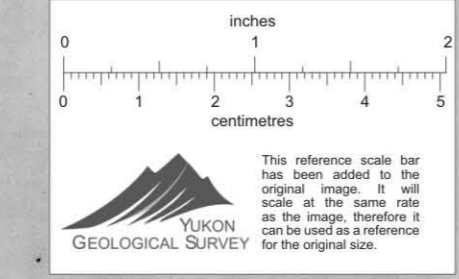
REFERENCE POINT CHURCH (see above)  
EASTING: Road number on grid line immediately to the right of estimate. Estimate north of a square from this line measured to point. 31  
NORTHING: Road number on grid line immediately below estimate. Estimate north of a square from this line measured to point. 09  
EXAMPLE MILITARY GRID REFERENCE: 9V9904  
Nearest corner grid reference 100,000 metres (about 43 miles)



H - Heavy mineral sampling  
S - Conventional stream sampling  
G - Geological mapping

Published 1980, by the SURVEYS AND MAPPING BRANCH, DEPARTMENT OF ENERGY, MINES AND TECHNOLOGY, Ottawa. Photograph taken in 1980-81. Field surveys 1980. Printed 1980.

Copyright reserved. All rights reserved. No part of this publication may be reproduced, stored in a retrieval system, or transmitted, in any form or by any means, electronic, mechanical, photocopying, recording, or by any information storage and retrieval system, without the prior written permission of the Department of Energy, Mines and Technology, Ottawa.



GREEN RIVER YUKON TERRITORY

This Provisional Map is equivalent to a standard map in accuracy of content.

Some minor errors may occur and are not guaranteed. Corrections or additions are invited by the Survey and Mapping Branch.

Cette carte provisoire équivaut à une carte régulière en ce qui concerne la précision de l'information.

Quelques erreurs mineures peuvent survenir et ne sont pas garanties. Des corrections ou des ajouts sont encouragés. La Direction des levés et de la cartographie vous invite à lui faire connaître les erreurs et les ajouts.

Published in 1980, by the DIRECTION DES LEVÉS ET DE LA CARTOGRAPHIE, DÉPARTEMENT DES LEVÉS, DES MINES ET DES TECHNOLOGIES, Ottawa. Photographie prise en 1980-81. Levés terrain en 1980. Imprimé en 1980.

Copyright réservés. Tous droits réservés. Aucune partie de cette publication ne peut être reproduite, stockée dans un système de récupération, ou transmise, sous quelque forme ou par quelque moyen, électronique, mécanique, par photocopie, enregistrement, ou par tout système de stockage et de récupération de l'information, sans la permission écrite préalable du Département des levés, des mines et des technologies, Ottawa.

ANMAC PROJECT  
GEOCHEM RESULTS  
CU/Pb/Zn

105 A/9 EDITION 1