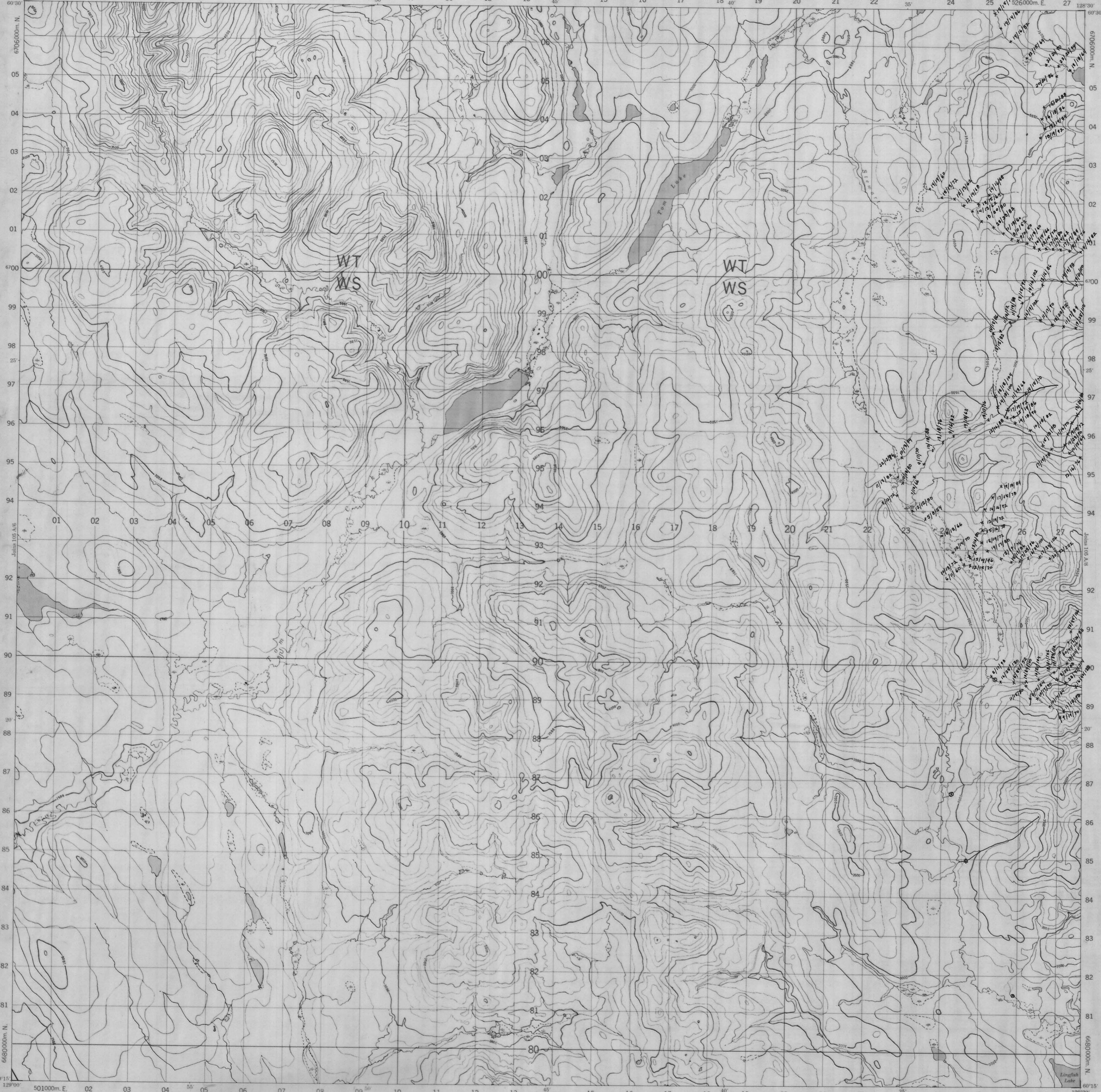
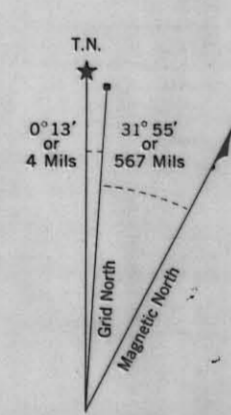
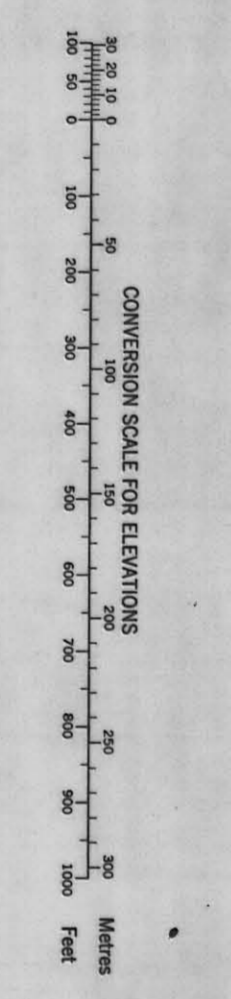
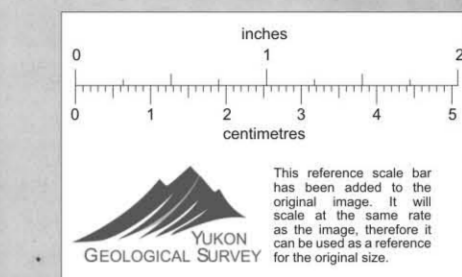


007833

PROVISIONAL MAP 105 A/7 1:50,000 CANADA EDITION 1 CARTE PROVISOIRE 105 A/7



Refer to this map as: 105 A/7 EDITION 1 REC SERIES A 722



Use diagram only to obtain corrected values. APPROXIMATE MEAN DECLINATION 1985 FOR CENTRE OF MAP. Annual change decreasing 5.1'

ONE THOUSAND METRE UNIVERSAL TRANSVERSE MERCATOR GRID ZONE 9

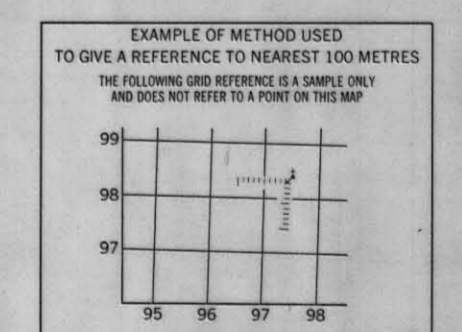
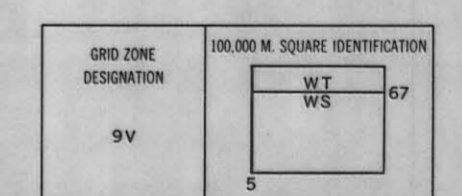
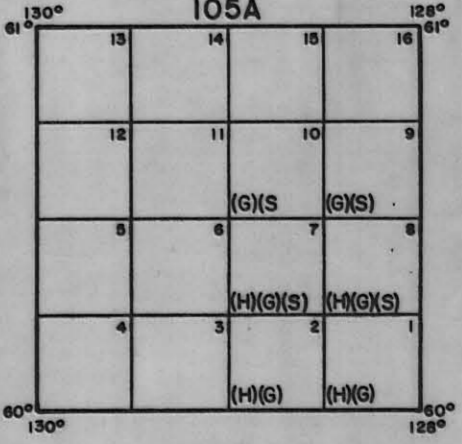


Table with 2 columns: REFERENCE POINT, CHURCH. Rows for EASTING, NORTHING, and UTM coordinates.

EXAMPLE MILITARY GRID REFERENCE 975004. Nearest contour grid reference 300,000 metres (about 63 miles)



- M - Heavy mineral sampling
S - Conventional stream sampling
G - Geological mapping

PUBLISHED BY THE SURVEYS AND MAPPING BRANCH... TOM LAKE YUKON TERRITORY Scale 1:50,000 Échelle... 105 A/7 EDITION 1