

106-B - BONNET PLUME LAKE (1974)  
 Topography & structure  
 1" = 4 miles

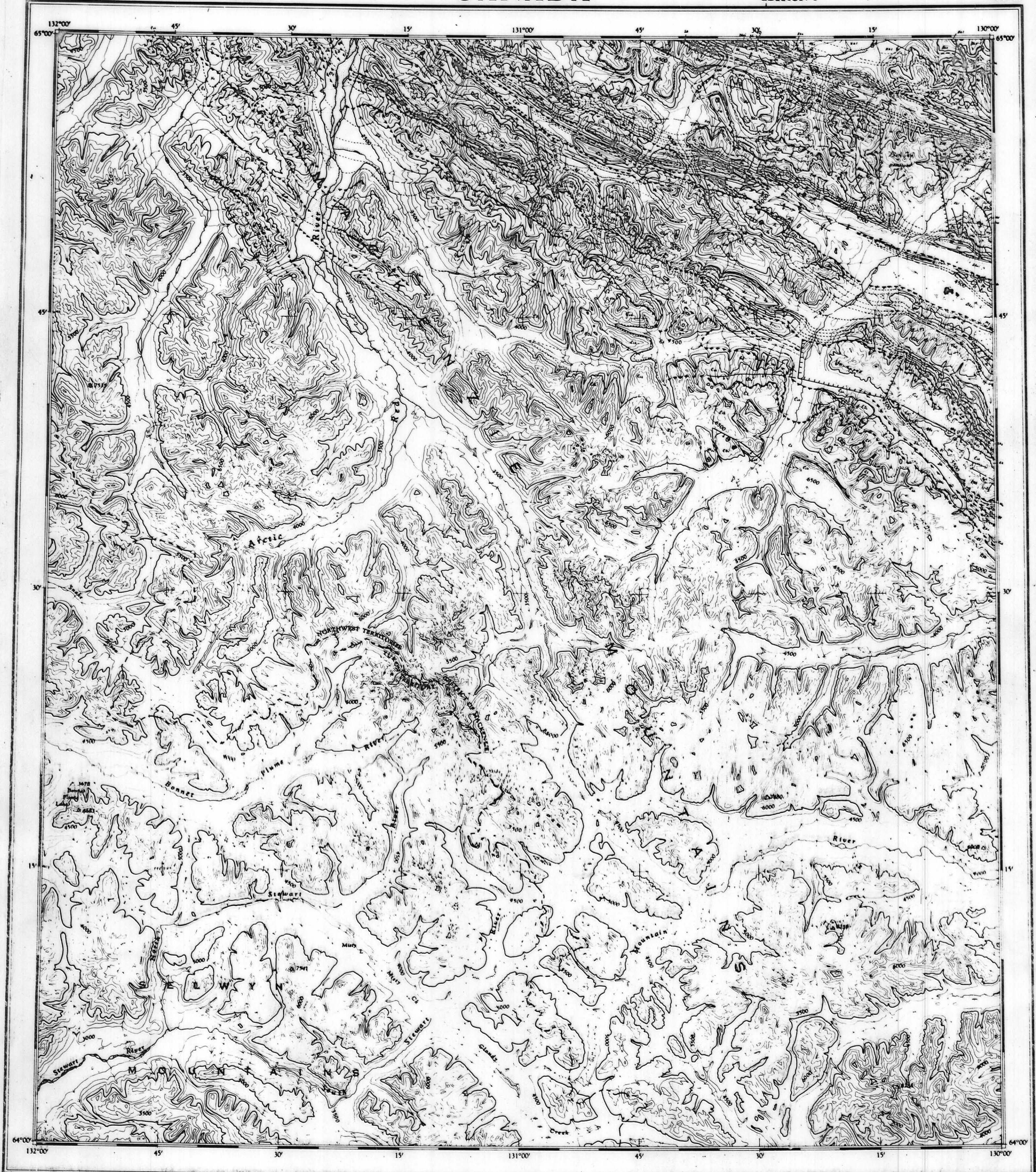
106 B

1:250,000

CANADA

EDITION 1

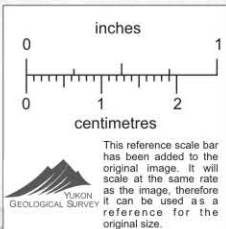
106 B



DECLINATION OF THE COMPASS NEEDLE 1959  
 INCLINAISON MAGNETIQUE EN 1959

Produced and Printed by the SURVEYS AND MAPPING BRANCH,  
 DEPARTMENT OF MINES AND TECHNICAL SURVEYS, 1960  
 from air photographs taken from 1950 to 1955

Copies may be obtained from the Map Distribution  
 Office, Department of Mines and Technical Surveys,  
 Ottawa, at 25 cents each



BONNET PLUME LAKE  
 YUKON - NORTHWEST TERRITORIES

008017

de la DIRECTION DES LEVÉS ET DE LA CARTOG.  
 DES MINES ET DES RELEVÉS TECHNIQUES, en 1960, d'a.  
 les aériennes prises entre 1950 et 1955

Ces cartes sont en vente au Bureau de distribution des  
 cartes, ministère des Mines et des Relevés techniques,  
 Ottawa. Prix de l'exemplaire: 25 cents.

Stream Cours d'eau

134°	132°	130°
66°	106F	106G
	SNAKE RIVER	UPPER RAMPARTS RIVER
65°	106C	106H
	NADALEN RIVER	BONNET PLUME
		MD