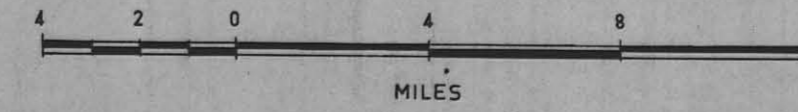
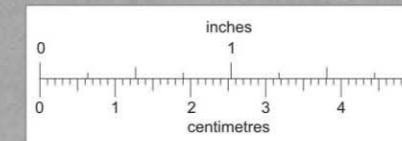


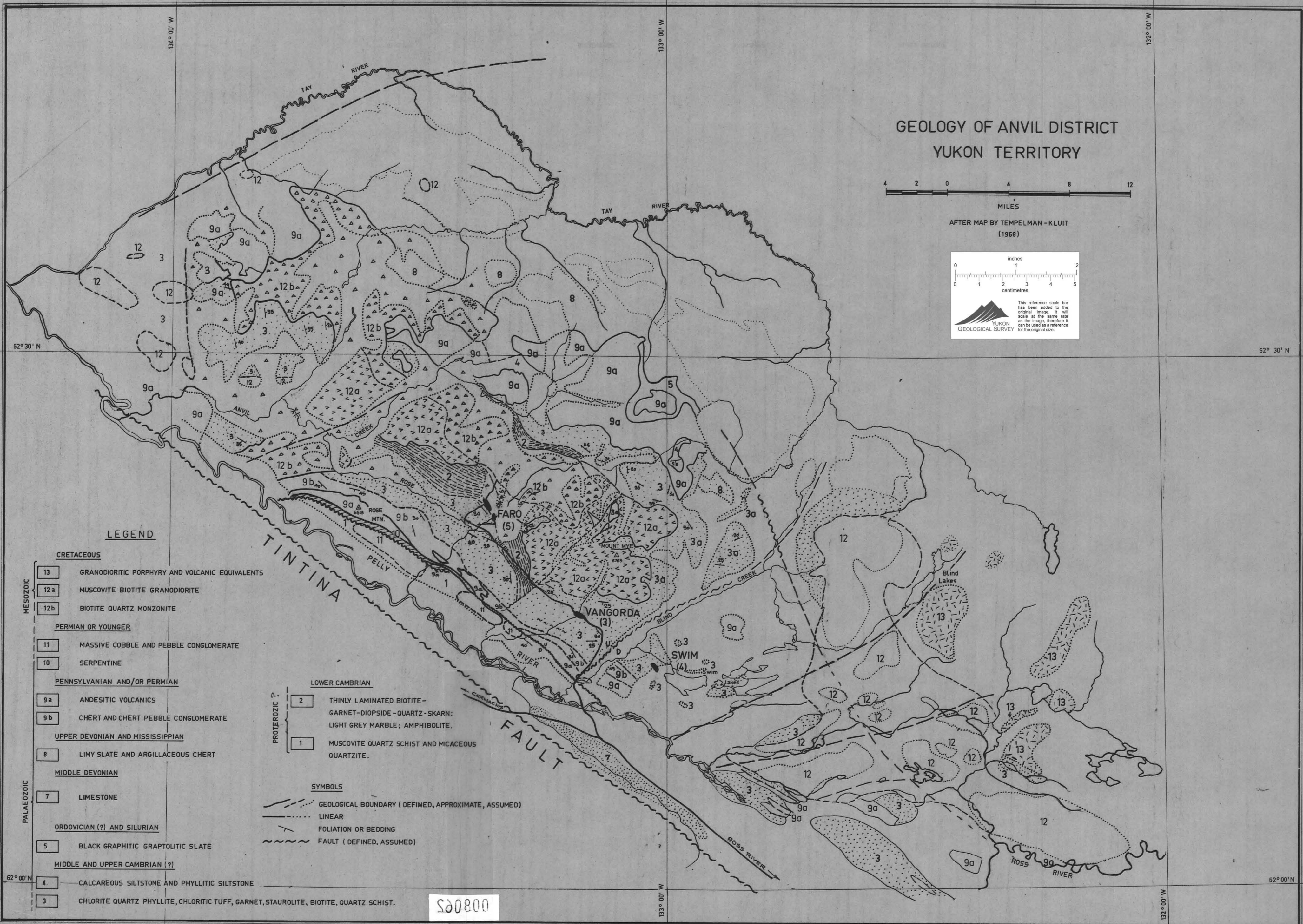
# GEOLOGY OF ANVIL DISTRICT YUKON TERRITORY



AFTER MAP BY TEMPELMAN-KLUIT  
(1968)



This reference scale bar has been added to the original image. It will scale at the same rate as the image, therefore it can be used as a reference for the original size.



## LEGEND

- |   |  |
|---|--|
| <b>MESOZOIC</b>                         |  |
| <b>CRETACEOUS</b>                       |  |
| 13                                      | GRANODIORITIC PORPHYRY AND VOLCANIC EQUIVALENTS                                      |
| 12 a                                    | MUSCOVITE BIOTITE GRANODIORITE   |
| 12 b                                    | BIOTITE QUARTZ MONZONITE   |
| <b>PERMIAN OR YOUNGER</b>               |  |
| 11                                      | MASSIVE COBBLE AND PEBBLE CONGLOMERATE   |
| 10                                      | SERPENTINE   |
| <b>PENNSYLVANIAN AND/OR PERMIAN</b>     |  |
| 9 a                                     | ANDESITIC VOLCANICS  |
| 9 b                                     | CHERT AND CHERT PEBBLE CONGLOMERATE  |
| <b>UPPER DEVONIAN AND MISSISSIPPIAN</b> |  |
| 8                                       | LIMY SLATE AND ARGILLACEOUS CHERT  |
| <b>MIDDLE DEVONIAN</b>                  |  |
| 7                                       | LIMESTONE  |
| <b>ORDOVICIAN (?) AND SILURIAN</b>      |  |
| 5                                       | BLACK GRAPHITIC GRAPTOLITIC SLATE  |
| <b>MIDDLE AND UPPER CAMBRIAN (?)</b>    |  |
| 4                                       | CALCAREOUS SILTSTONE AND PHYLITIC SILTSTONE  |
| 3                                       | CHLORITE QUARTZ PHYLITE, CHLORITIC TUFF, GARNET, STAUROLITE, BIOTITE, QUARTZ SCHIST. |

- |                      |  |
|----------------------|--|
| <b>PROTEROZOIC ?</b> |  |
| 2                    | THINLY LAMINATED BIOTITE-GARNET-DIOPSIDE-QUARTZ-SKARN; LIGHT GREY MARBLE; AMPHIBOLITE. |
| 1                    | MUSCOVITE QUARTZ SCHIST AND MICACEOUS QUARTZITE.                                       |

- |                |   |
|----------------|---|
| <b>SYMBOLS</b> |   |
|                | GEOLOGICAL BOUNDARY (DEFINED, APPROXIMATE, ASSUMED) |
|                | LINEAR  |
|                | FOLIATION OR BEDDING                                |
|                | FAULT (DEFINED, ASSUMED)                            |

S20800