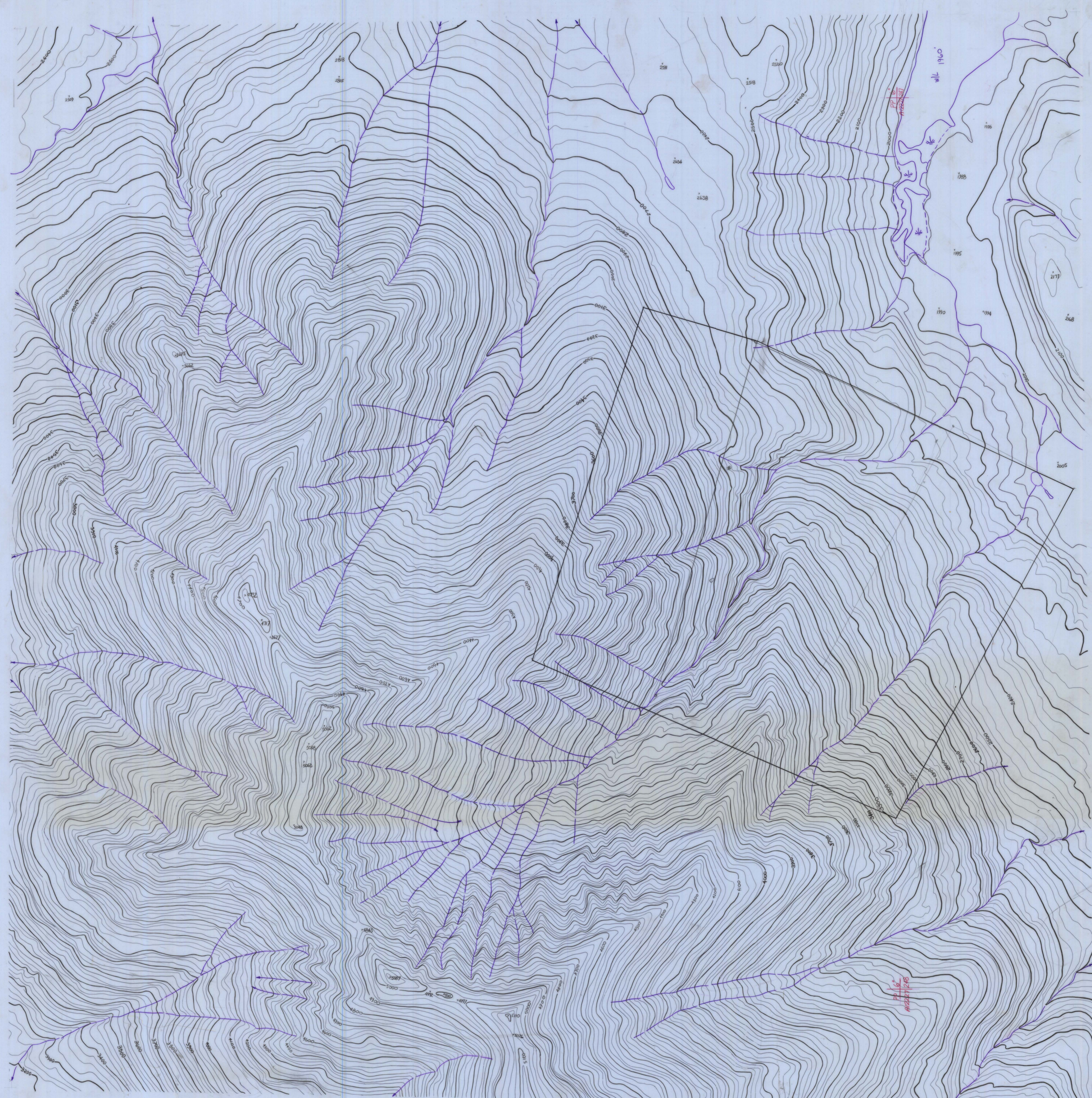


106-8-2  
GRENWICH  
CLAIM  
GROUP  
PRELIMINARY  
RECONNAISSANCE  
MAP



Scale and elevation datum based on limited ground control resulting in good relative, but uncertain absolute, map accuracy.  
Compiled from aerial photography at an approximate scale of 1 inch equals 3,200 feet flown in 1948

CYPRUS ANVIL MINING CORP.	
PLUME RIVER	008093
PRELIMINARY RECONNAISSANCE TYPE MAPPING	

	Scale	1" = 400'
	Contour Interval	25'
	Date	APRIL 1976
	Job No.	06261-0
1200 West Pender Street, Vancouver, B.C. Canada		
Sheet No.		1 OF 1

