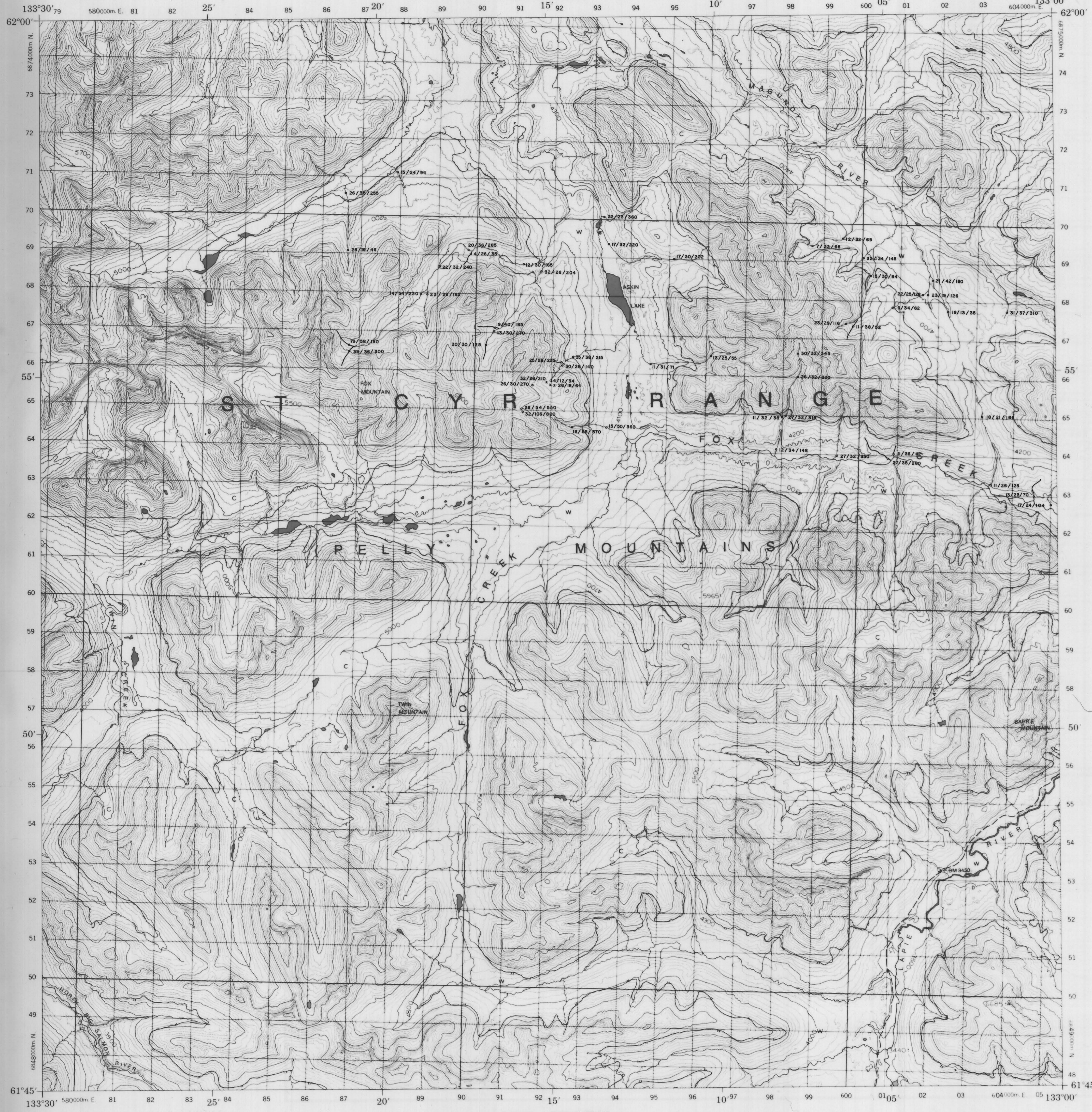


CANADA

EDITION 1 105 F/14



LEGEND

31/13/179 Sample Site, Cu/Pb/Zn Results in ppm

PRODUCED BY SURVEYS AND MAPPING BRANCH  
DEPARTMENT OF ENERGY, MINES AND RESOURCES  
OTTAWA, CANADA

COPIES MAY BE OBTAINED FROM THE MAP DISTRIBUTION  
OFFICE DEPARTMENT OF ENERGY, MINES AND RESOURCES, OTTAWA

LES CARTES SONT EN VENTE AU BUREAU DE DISTRIBUTION  
DES CARTES MINIERES DE L'ENERGIE DES MINES ET  
DES RESSOURCES, OTTAWA

ETABLI PAR LA DIRECTION DES LEVES ET DE LA  
CARTOGRAPHIE, MINISTRE DE L'ENERGIE, DES  
MINES ET DES RESSOURCES, OTTAWA

CONTOUR INTERVAL 100 FEET

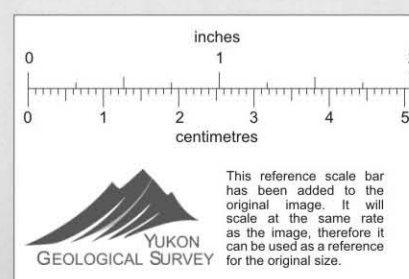
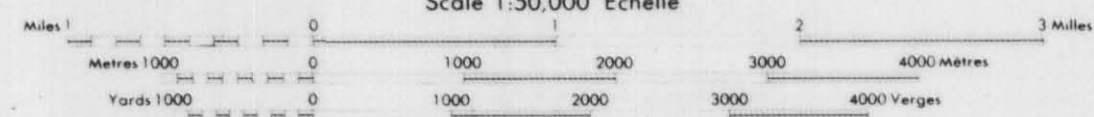
NORTH AMERICAN DATUM 1983  
TRANSVERSE MERCATOR PROJECTION

SYSTEME DE REFERENCE GEODESIQUE NORD-AMERICAIN 1983  
PROJECTION TRANSVERSE DE MERICATOR

ETABLISSEMENT DE TOUS DROITS RESERVES

FOX CREEK  
YUKON TERRITORY

Scale 1:50,000 Echelle



CYPRUS ANVIL MINING CORPORATION

GEOCHEMICAL SURVEY VALUES MAP Cu, Pb, Zn

REVISED:

NTS: 105 F - 14

DRAWN BY: C. L. C.

DATE: MAY 4, 1979

008119