

PLAN OF SURVEY OF LOTS 23 and 24 GROUP ~ 10 ~ Y.T. ~

SCALE ⁴⁰⁰ 200 FEET = 1 INCH.

Surveyed August 1907 by C. S. W. Barwell D. L. S.

Filed in the Survey Office at Dawson
Y. T. this 26 day of Aug 1907
under plan number 842

Chas. W. Barwell
Director of Surveys Y.T.

F.B. 9108

Co. J. Stiers
June 1905
Survey of Survey of the Yukon

W.D. Barry

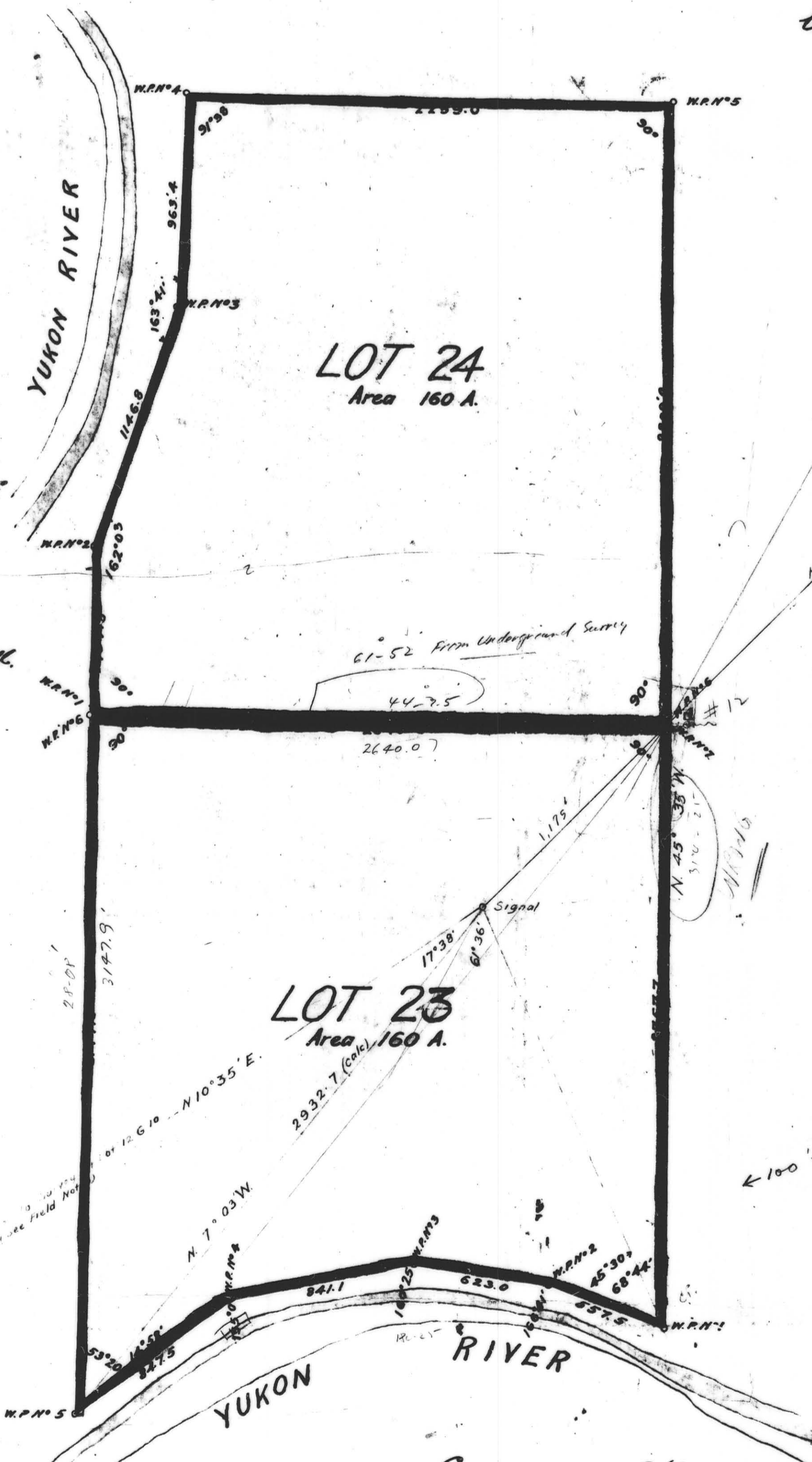
NOTE.
Distances are in feet and tenths
Angles are in degrees and minutes
Surveyed lines and measured distances are in
Black
Previously surveyed lines and calculated distan-
ces and bearings are in Red
Observed bearings are in Black
Posts planted are shown thus \circ
Posts found on the ground are shown thus \bullet
The bearings of this survey are derived from
the survey of Lots 10, 11, 12 by Jephson D.L.S.

I, Charles S. W. Barwell of Dawson
Dominion Land Surveyor make oath and
say - That I have in my own proper
person, according to law and the in-
structions of the Surveyor General
faithfully and correctly executed the sur-
vey shown by this plan and that this
plan is true and correct to the best of
my knowledge and belief.

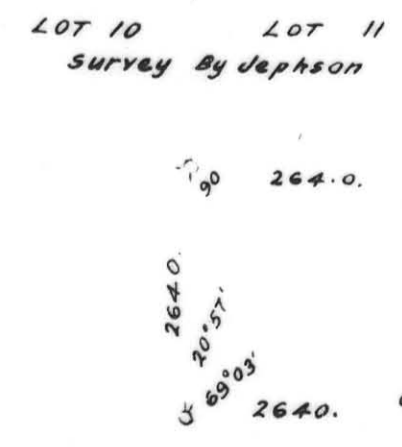
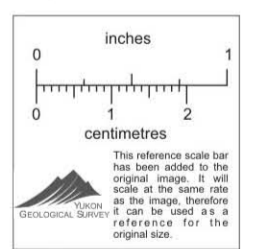
Chas. S. W. Barwell

Sworn before me at Dawson
this 26th day of August A.D. 1907

W.D. Barry
A Commissioner etc.



DETAIL OF TRIANGULATION
SCALE 2000 FEET 1 IN.



DEPARTMENT OF THE INTERIOR
TOPOGRAPHICAL SURVEYS BRANCH
Ottawa 13th September 1907.
APPROVED AND CONFIRMED
Ed. Deville
Surveyor General.

Examined and Approved
Aug 26/07
Chas. W. Macpherson
Dir of Surveys Y. T.

9108

008311

PWC
2/19/08