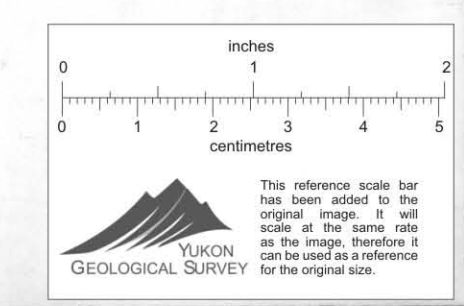
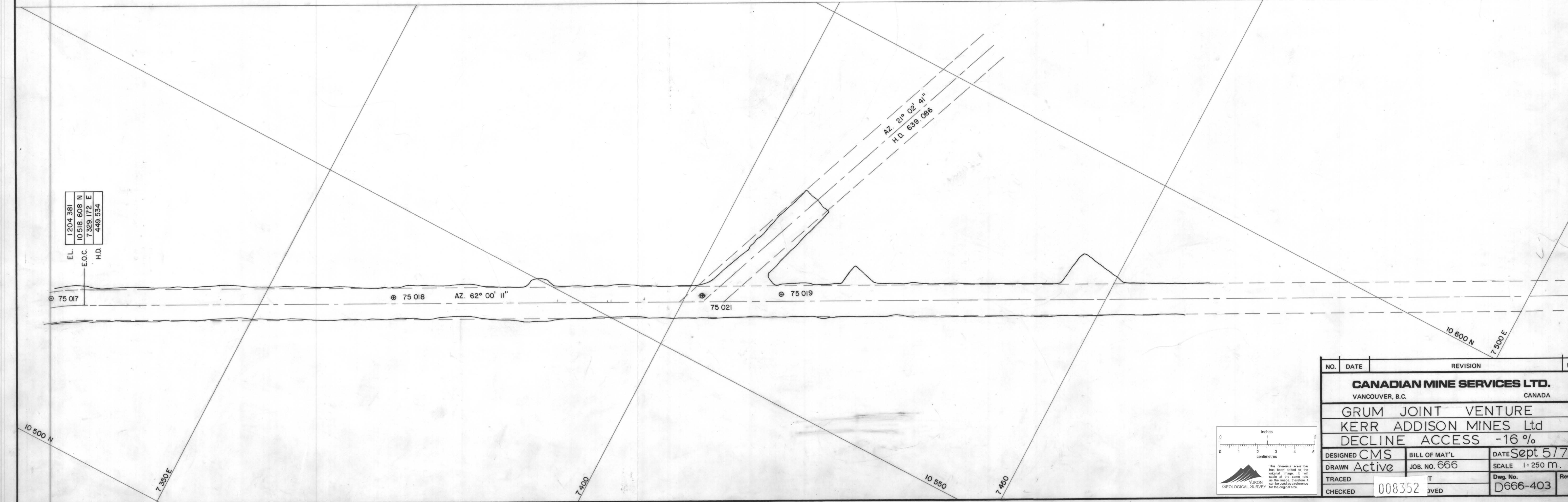


EL	1204.381
E.O.C	10 818.608 N
H.D	7 329.172 E
	448.534

AZ. 21° 02' 41"
H.D. 639.086

AZ. 62° 00' 11"



NO.	DATE	REVISION	BY
CANADIAN MINE SERVICES LTD. VANCOUVER, B.C. CANADA			
GRUM JOINT VENTURE KERR ADDISON MINES Ltd DECLINE ACCESS -16%			
DESIGNED CMS	BILL OF MAT'L	DATE Sept 5/75	
DRAWN Active	JOB. NO. 666	SCALE 1:250 m.	
TRACED	T	Dwg. No.	Rev.
CHECKED	008352	JVED	D666-403