

008590

Nahanni Project - 105 I, J, O, P.  
1973.

Topog. Maps

1" = 4 mile

available :

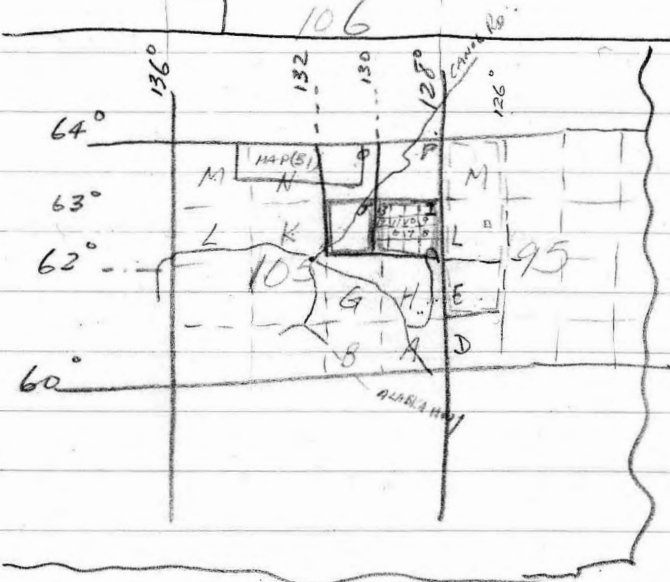
- 105 I Nahanni have 1
- 105 J Sheldon Lake ✓
- 105 O Nidderly Lake
- 105 P Sekwi Mountain ✓
- 95 E Flat River
- 95 L Glacier Lake
- 95 M Wrigley Lake

1/4" = 1 mile

not available

other scale

106



Geol. Maps

- 105-J Sheldon Lake Map # 12-1961 ✓ have 2
- 105 I Nahanni { 14-1961 have 1  
8-1967 ✓ have 1
- 95 E, L, M Flat River { paper #64-52 } { map\* 35-1964 } 1" = 4 mi. have 1 (check)  
Glacier L. { 36-1964 }  
Wrigley L. { 37-1964 }
- 105 M, N, O (in parts) Map # 53.7 with maps (Northern Selwyn Mtns) 1954 have 1  
Lansing Nidderly L.
- 105 H Frances L. 6-1966 have 1
- 105 C, F, K, J, P. Canal Road Paper 45-21 Map 45-21A have 1