

Shaw Lake 1964

SHEET 105K-2

LATITUDE 62° 00' To 62° 15'

LONGITUDE 132° 30' To 133° 00'

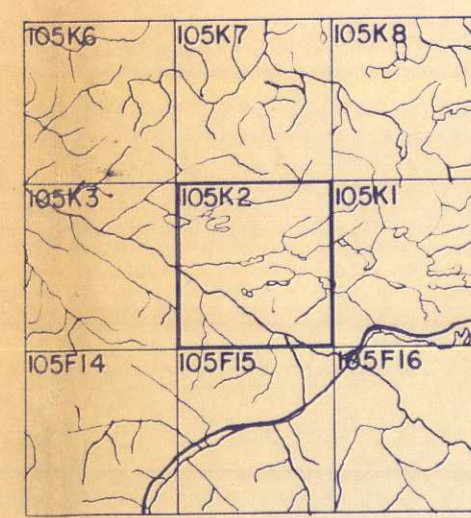
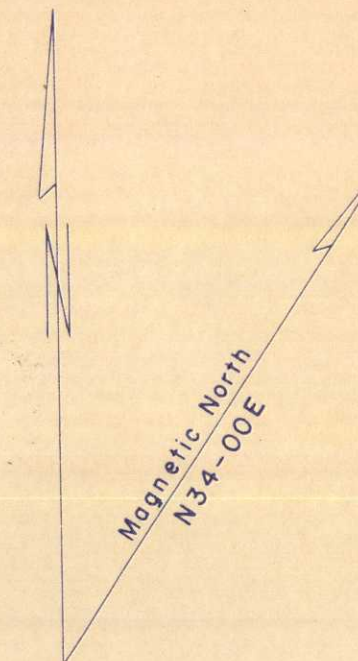
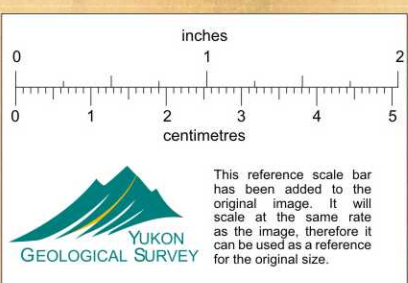
CANADA
DEPARTMENT OF NORTHERN AFFAIRS AND NATIONAL RESOURCES
NORTHERN ADMINISTRATION AND LANDS BRANCH
LANDS DIVISION

SCALE: 1/2 MILE TO 1 INCH

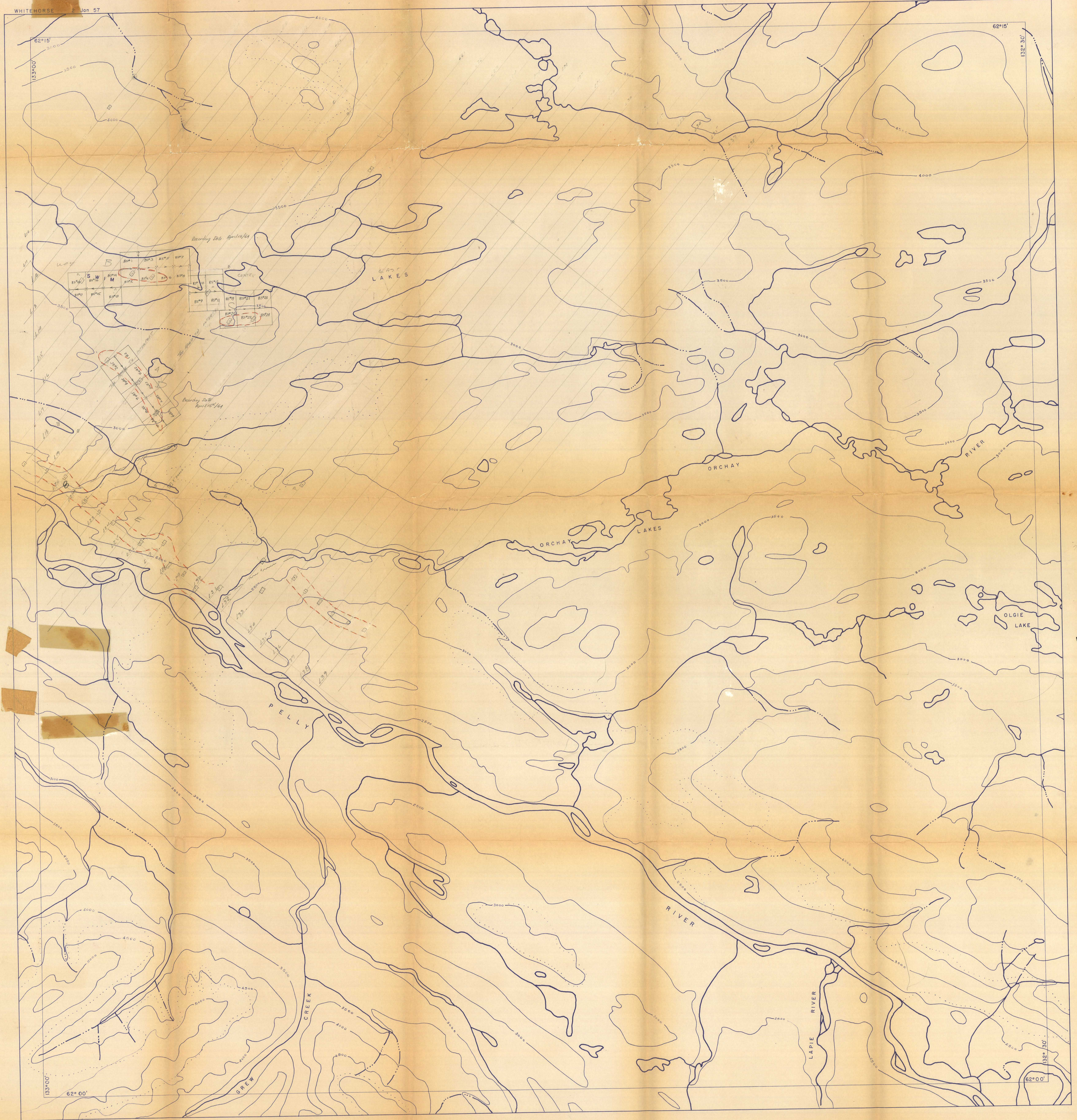
FT. 1000 1500 2000 2500 3000 3500 4000 4500 5000 5500 6000

ISSUED UNDER THE AUTHORITY OF THE MINISTER
OF NORTHERN AFFAIRS AND NATIONAL RESOURCES

008627



WHITEHORSE 2 Jan 57



1584

6106

1000