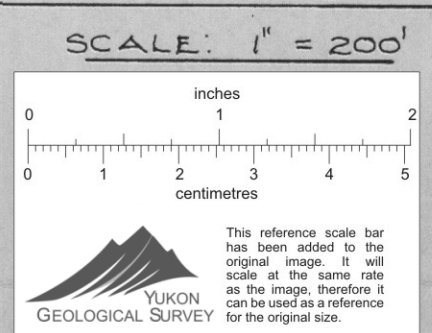
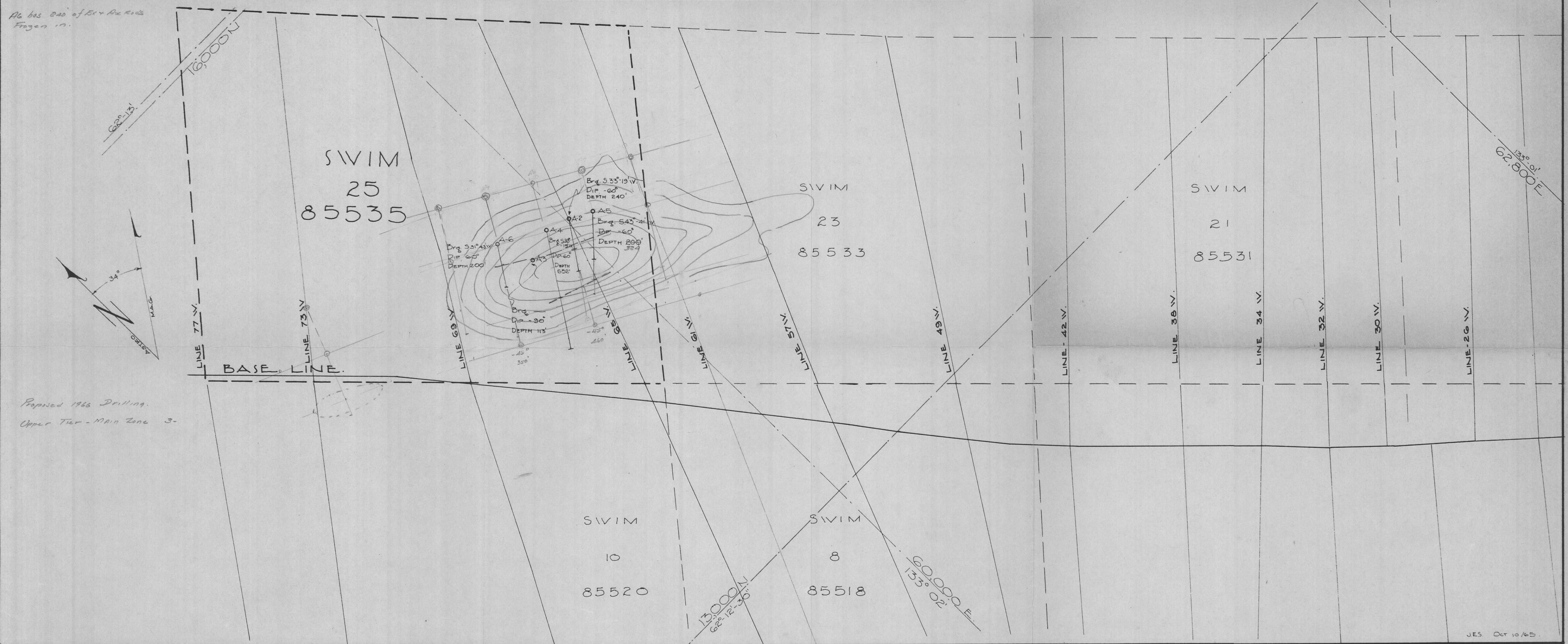


-KERR ADDISON MINES LIMITED-
SWIM LAKES GROUP 008629
 PLAN SHOWING D.D.H. LOCATIONS ON SWIM 25 85535
 SWIM LAKES AREA WHITEHORSE MINING DIVISION
 YUKON TERRITORY



- CLAIMS LOCATION -
- SKETCH -
 SCALE: 1" = 1/2 MILE

1/4 has 840 of EX + AX Roads Frozen in.



*Proposed 1966 Drilling.
 Upper Tier - MAIN Zone 3-*