

X-RAY ASSAY LABORATORIES LIMITED

28 EGLINTON AVENUE WEST - TORONTO, ONTARIO - HUDSON 5-8907

Certificate of Analysis

Swim Lake
'A' Group

NO. 2645

008691

TO: Kerr-Addison Gold Mines Limited,
409 Granville Street Rm. 319,
VANCOUVER, B.C.

*Cat group
Swim Lake
105-K-4*

RECEIVED October 16, 1963.

INVOICE NO. 6135

SAMPLE(S) OF soils

SUBMITTED TO US SHOW RESULTS AS FOLLOWS:

Sample	Cu ppm		Zn ppm	Sample	Cu ppm	Zn ppm
24S-BL Cat- 1	x	B. Horiz.	40	30S-3W Cat.- 26	x	120
24S-1W 2	x	SOIL B	90	" 2W 27	20	50
" 2W 3	x		70	" 1W 28	x	70
" 3W 4	x	SOIL	110	" 00 29	x	80
" 4W 5	x	" B	50	" 1E 30	x	140
" 5W 6	x	" "	80	" 2E 31	10	40
" 6W 7	x	" "	70	" sl- 1	130	80
26S-6W 8	x	" "	90	" 2	30	110
" 5W 8B	x	" "	40	" 3	40	90
" 4W 9	x	" "	50	" 4	50	140
" 3W 10	10	" "	210	" 5	40	160
" 2W 11	x	" "	80	" 6	40	100
" 1W 12	x	" "	40	" 7	20	110
" BL 13	x	" "	40	" 8	130	250
28S-BL 14	x	" "	40	" 9	x	100
" 1E 15	10	" "	80	" 10	50	140
" 2E 16	10	" "	70	" 11	20	90
" 1W 17	230	" "	80			
" 2W 18	30	" "	70			
" 3W 19	20	" "	90			
" 4W 20	10	" "	90			
" 5W 21	20	" "	50			
" 6W 21B	10	" "	50			
30S-7W 22	x		60			
" 6W 23	x		60			
" 5W 24	30		50			
" 4W 25	10		60			

x - less than 10 ppm

X-RAY ASSAY LABORATORIES LIMITED

DATE October 24, 1963.

CERTIFIED BY E.P. Brasher MANAGER

DATE Aug 7th 1904
 FILE NO. 1904-5

ASSAY CERTIFICATE

WHITEHORSE ASSAY OFFICE

P.O. BOX 346. WHITEHORSE. YUKON

RECEIVED FROM Mr. F. Kinnear, Kerr-Adrian Gold Mines Ltd.

SAMPLE NO.	GOLD OZ. PER TON	SILVER OZ PER TON	Lead	Copper	Biopyr	Magnetic	Iron
<i>Keston hill Salmon No. 3 80'-84'</i> 862	Trace	.14	0.1	4.5	.22	42.3	
874	Trace	.12					
159'-163' - 803						.52	
99.5'-110.5' 804						.32	
52'-57.5' 805						.26	

*Severn lakes
No. 1 Hole
samples*

ASSAYER

Geo Spalding

ASSAYS G. Spalding

A-1 - Swim Lakes Group.

#403	15.9' - 163'	4ft	<u>Magnetic</u>
Cold	163' - 163'		— .82
#404	99.5' - 110.5'	11ft	— .32
#405	52' - 57.5'	5.5ft	— .26

X-RAY ASSAY LABORATORIES LIMITED

28 EGLINTON AVENUE WEST - TORONTO, ONTARIO - HUDSON 5-8907

Certificate of Analysis

Swim Lake
'A' Group

NO. 2645

008691

TO: Kerr-Addison Gold Mines Limited,
409 Granville Street Rm. 319,
VANCOUVER, B.C.

*Cat group
Swim Lake
105-K-4*

RECEIVED October 16, 1963.

INVOICE NO. 6135

SAMPLE(S) OF soils

SUBMITTED TO US SHOW RESULTS AS FOLLOWS:

Sample	Cu ppm		Zn ppm	Sample	Cu ppm	Zn ppm
245-BL Cat- 1	x	B. Horiz.	40	30S-3W Cat.- 26	x	120
245-1W 2	x	SOIL B	90	" 2W 27	20	50
" 2W 3	x		70	" 1W 28	x	70
" 3W 4	x	SOIL	110	" 00 29	x	80
" 4W 5	x	" B	50	" 1E 30	x	140
" 5W 6	x	" "	80	" 2E 31	10	40
" 6W 7	x	" "	70	" sl- 1	130	80
26S-6W 8	x	" "	90	" 2	30	110
" 5W 8B	x	" "	40	" 3	40	90
" 4W 9	x	" "	50	" 4	50	140
" 3W 10	10	" "	210	" 5	40	160
" 2W 11	x	" "	80	" 6	40	100
" 1W 12	x	" "	40	" 7	20	110
" BL 13	x	" "	40	" 8	130	250
28S-BL 14	x	" "	40	" 9	x	100
" 1E 15	10	" "	80	" 10	50	140
" 2E 16	10	" "	70	" 11	20	90
" 1W 17	230	" "	80			
" 2W 18	30	" "	70			
" 3W 19	20	" "	90			
" 4W 20	10	" "	90			
" 5W 21	20	" "	50			
" 6W 21B	10	" "	50			
30S-7W 22	x		60			
" 6W 23	x		60			
" 5W 24	30		50			
" 4W 25	10		60			

x - less than 10 ppm

X-RAY ASSAY LABORATORIES LIMITED

DATE October 24, 1963.

CERTIFIED BY E.P. Brasher MANAGER

DATE Aug 7th 1904
 FILE NO. 1904-5

ASSAY CERTIFICATE

WHITEHORSE ASSAY OFFICE

P.O. BOX 346. WHITEHORSE. YUKON

RECEIVED FROM Mr. F. Kinnear, Kerr-Adrian Gold Mines Ltd.,

SAMPLE NO.	GOLD OZ. PER TON	SILVER OZ PER TON	Lead	Copper	Biopyr	Magnetic	Iron
<i>Keston hill Salmon No. 3 80'-84'</i> 862	Trace	.14	0.1	4.5	.22	42.3	
874	Trace	.12					
159'-163' - 803						.52	
99.5'-110.5' 804						.32	
52'-57.5' 805						.26	

*Severn lakes
No. 1 Hole
samples*

ASSAYER Geo Spalding

ASSAYS G. Spalding

A-1 - Swim Lakes Group.

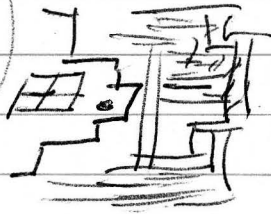
#403	15.9' - 463'	4ft	<u>Magnetic</u>
Cold	110.5'		— .82
#404	99.5' - 110.5'	11ft	— .32
#405	52' - 575'	5.5ft	— .26

	Ag	Pb	Zn	Cu		
876	.6	1.3	0.2	0.07	3.0	193-196
77	.14	2.0	0.55	0.07		201
78	.152	0.6	1.25	0.22		204
79	.44	0.1	1.1	0.63		208
80	.60	1.25	1.30	0.60		213
81	0.9	3.1	2.0	0.22		218
82	0.86	2.8	2.3	0.18		223
83	0.84	3.4	4.5	0.30		227
84	0.84	2.2	4.6	0.22		232
85	0.80	1.8	3.9	0.22		0.01 Au.

(1.76)

(Vaynda)

V 9.4 m
 3.18 Pb
 4.96 Zn
 0.27 Cu
 1.76 Ag
 0.7



(6.99) 24 cps

(Call fallback) Rtehi Stee in business.

DATE July 10 th 1965
 FILE NO. 2253-

ASSAY CERTIFICATE

WHITEHORSE ASSAY OFFICE

P.O. BOX 346. WHITEHORSE. YUKON

D.D.H. Ayl

RECEIVED FROM Mr. Wm. Sirola, Kerr-Addison Gold Mines Ltd.,

SAMPLE NO.	GOLD OZ. PER TON	SILVER OZ PER TON					
957 - 405-410	.01	.36					
958 410-415	.01	.64					
959 415-420	.02	.58					
960 420-425	.01	.34					
961 425-430	.01	1.44					
962 430-435	.02	1.60					
963 435-440	.01	2.04					
964 440-445	.01	1.74					
966 450-455	.02	.92					
967 455-460	.01	1.64					
924 2415-244	Trace	.14					

*Swain
A-4*

*Sw. Rel. Min
Sulphides*

*Mining Rights
1965-1966*

ASSAYER *Geo. Spalding*

DATE July 13th 1965
 FILE NO. 2253

ASSAY CERTIFICATE

WHITEHORSE ASSAY OFFICE

P.O. BOX 346. WHITEHORSE. YUKON

RECEIVED FROM Mr. Wm Sirela, Kerr-Adison Gold Mines Ltd.

SAMPLE NO.	GOLD OZ. PER TON	SILVER OZ PER TON		Silver		
150-154 - 910		.48		937	1.80	304-309
154-159 - 911		.44		938	1.10	309-314
225.5-227.5 - 918		1.64		939	.14	314-320
212-219 - 916		.92		940	.54	320-325
227.5-229 - 919		.18		941	.24	325-330
235-237 - 921		1.84		942	.54	330-335
240-241.5 - 923		1.08		943	.14	335-340
244-249 - 925		.88		944	.40	340-345
254-259 - 927		.20		945	.28	345-350
258-264 - 928		.14		946	.24	350-355
264-269 - 929		.18		965	2.04	445-450
269-274 - 930		.18				
274-279 - 931		.34				
279-284 - 932		1.40				
284-289 - 933		1.88				
289-294 - 934		1.34				
294-299 - 935		1.44				
299-304 - 936		1.44				

*Sirela
A-4*

ASSAYER Geo. Spalding

Sammie Hicks

17-2

DATE June 16th 1965
FILE NO. 2183-10

ASSAY CERTIFICATE

WHITEHORSE ASSAY OFFICE
P.O. BOX 346. WHITEHORSE. YUKON

RECEIVED FROM Mr. M. Sirola

SAMPLE NO.	GOLD OZ. PER TON	SILVER OZ PER TON	Lead	Zinc	Copper			
880			1.25	1.3	0.60			

ASSAYER *Geo. Speeding*

DATE July 17th 1965
 FILE NO. 2253-

ASSAY CERTIFICATE

RECEIVED
 JUL 20 1965

WHITEHORSE ASSAY OFFICE

P.O. BOX 346. WHITEHORSE. YUKON

RECEIVED FROM Kerr-Addison Gold Mines Ltd.,

KERR ADDISON GOLD MINES LTD.

SAMPLE NO.	GOLD OZ. PER TON	SILVER OZ PER TON	Lead	Zinc	Copper		
<i>From To</i>							
							<i>LENGTH</i>
259 264 928		.14	0.1	0.3	Trace		✓ 5
264 269 929		.18	0.2	0.3	"		✓ 5
269 274 930		.18	0.1	0.2	"		✓ 5
274 279 931		.34	0.1	0.5	"		✓ 5
279 284 932		1.40	0.4	4.4	.15		✓ 5
284 289 933		1.88	0.8	5.8	.20		✓ 5
289 294 934		1.34	0.5	3.6	.15		✓ 5
294 299 935		1.44	0.6	5.4	.12		✓ 5
299 304 936		1.44	1.4	5.8	.21		✓ 5
304 309 937		1.80	1.5	8.4	.15		✓ 5
309 314 938		1.10	2.1	2.9	.15		✓ 5
314 320 939		.14	0.3	0.6	.22		✓ 6
320 325 940		.54	1.2	1.3	.40		✓ 5
325 330 941		.24	0.3	1.1	.50		✓ 5
330 335 942		.54	1.4	1.3	.45		✓ 5
335 340 943		.14	Trace	1.1	.15		✓ 5
340 345 944		.40	0.1	1.1	.45		✓ 5
345 350 945		.28	0.2	1.0	.40		✓ 5

Surrey
A-4

ASSAYER Geo. Spalding

DATE July 17th 1965
 FILE NO. 2253-

ASSAY CERTIFICATE

RECEIVED
 JUL 20 1965

WHITEHORSE ASSAY OFFICE

P.O. BOX 346. WHITEHORSE. YUKON

KERR ADDISON GOLD MINES LTD.

Kerr-Addison Gold Mines Ltd.,

RECEIVED FROM

Per

SAMPLE NO.		GOLD OZ. PER TON	SILVER OZ PER TON	Lead	Zinc	Copper	Swim
<i>length</i>							
<i>from to</i>	<i>LENGTH.</i>						
150 - 154	910 4 ft.	Trace	.45	2.0	2.4	.07	A-4 CORE
154 - 159	911 5	"	.44	1.8	2.9	.05	
193 - 198	912 5		1.24	6.4	9.2	.22	
198 - 203.5	913 5.5		1.08	4.5	8.1	.07	
203.5 - 206	914 2.5		.50	1.3	2.5	.18	
206 - 211	915 5'	.01	.84	1.8	0.7	.22	
212 - 219	916 7		.92	3.0	4.3	.15	
219 - 225.5	917 6.5		.24	0.4	0.4	.07	
225.5 - 227.5	918 ✓ 2		1.64	5.8	5.0	.07	
227.5 - 229	919 ✓ 1.5		.18	0.3	0.2	.07	
229 - 231.5	920 ✓ 2.5		2.64	7.3	5.5	.05	
235 - 237	921 ✓ 2.0		1.84	4.6	4.1	.10	
237 - 240	922 ✓ 3	Trace	Trace	Trace	0.7	.02	
240 - 241.5	923 ✓ 1.5		1.08	3.1	2.8	.07	
241.5 - 244	924 ✓ 2.5	Trace	.14	0.1	0.4	.06	
244 - 249	925 ✓ 5		.88	1.5	1.7	.22	
249 - 254	926 ✓ 5		.68	1.1	0.8	.22	
254 - 259	927 ✓ 5		.20	0.1	0.2	Trace	

ASSAYER

Geo. Spalding

DATE July 17 1965
 FILE NO. 2253-

ASSAY CERTIFICATE

RECEIVED
 JUL 20 1965

WHITEHORSE ASSAY OFFICE

P.O. BOX 346. WHITEHORSE. YUKON

RECEIVED FROM Kerr-Addison Gold Mines Ltd.

KERR-ADDISON GOLD MINES LTD.
 KERR

SAMPLE NO.			GOLD OZ. PER TON	SILVER OZ PER TON	Lead	Zinc	Copper	Per Pct.
From	To	LENGTH						
350	355	946 ✓ S		.24	0.1	1.0	.45	
355	360	947 ✓ S		.34	1.8	1.8	.33	
360	365	948 ✓ S		.24	0.1	1.0	.55	
365	370	949 ✓ S		.24	0.2	1.2	.50	
370	375	950 ✓ S		.37	1.4	1.7	.32	
375	380	951 ✓ S		.94	3.9	5.3	Trace	
380	385	952 ✓ S		1.18	5.2	3.1	.37	
385	390	953 ✓ S		.94	4.1	3.5	.30	
390	395	954 ✓ S		1.20	4.7	5.1	.18	
395	400	955 ✓ S		.68	2.3	2.3	.30	
400	405	956 ✓ S		.58	1.6	1.1	.37	
405	410	957 ✓ S	.01	.36	2.1	1.4	.30	
410	415	958 ✓ S	.01	.64	2.6	2.5	.22	
415	420	959 ✓ S	.02	.58	1.3	3.3	.07	
420	425	960 ✓ S	.01	.34	2.5	1.5	.07	
425	430	961 ✓ S	.01	1.44	4.4	7.2	.07	
430	435	962 ✓ S	.01	1.60	5.0	1.1	Trace	

*Swain
A-4*

ASSAYER

Geo. Spalding

DATE June 18th 1965
 FILE NO. 2183-10

ASSAY CERTIFICATE

WHITEHORSE ASSAY OFFICE

P.O. BOX 346. WHITEHORSE. YUKON

RECEIVED FROM Mr. Wm. Sirela, Kerr-Adairson Mines Ltd.

c.c. PMK - June 24th, 65
c.c. Assay file
Swim Lakes "A"
A-2

SAMPLE NO.	GOLD OZ. PER TON	SILVER OZ PER TON	Lead	Zinc	Copper		
876		.60	1.3	0.2	.07		
877		.40	2.0	0.55	.07		
878		.52	0.6	1.25	.22		
879		.44	0.1	1.1	.63		
880		.60	1.25	1.3	.60		
881		.90	3.1	2.0	.22		
882		.86	2.8	2.3	.18		
883		.84	3.4	4.5	.30		
884		.84	2.2	4.6	.22		
885		.80	1.8	3.9	.22		
Composite	.01						

Swim Lakes "A"
DDH A-2

ASSAYER Geo. Spalding

DATE July 22nd 1965
 FILE NO. 2279-5

ASSAY CERTIFICATE

RECEIVED
 JUL 29 1965

WHITEHORSE ASSAY OFFICE
 P.O. BOX 346. WHITEHORSE. YUKON

RECEIVED FROM Mr. P. Kavanagh, Kerr-Addison Gold Mines Ltd.,

KERR ADDISON GOLD MINES LTD.

SAMPLE NO.			GOLD OZ. PER TON	SILVER OZ PER TON	Lead	Zinc	Copper		
From	To	LENGTH							
460-465	968	5	.03	1.50	1.6	3.6	.30		
465-470	969	5	.03	1.52	1.5	4.9	.15		
470-472	970	3.2	.04	2.00	2.5	4.0	.17		
532-535	971	3	.005	.08	Trace	0.1	.05		
550.5-551	972	0.5	.04	2.94	6.2	10.5	Trace		

*Savin
A-4*

ASSAYER Geo. Spalden

DATE Aug 3rd 1965
FILE NO. 2305-1

ASSAY CERTIFICATE

WHITEHORSE ASSAY OFFICE
P.O. BOX 346. WHITEHORSE. YUKON

RECEIVED
AUG - 5 1965

RECEIVED FROM Kerr-Addison Gold Mines Ltd.

KERR ADDISON GOLD MINES LTD.

SAMPLE NO.	GOLD OZ. PER TON	SILVER OZ PER TON	Lead	Zinc	Copper	Fe		
973 A4 472'-476' NOTE <u>Pb+Zn</u> AG	.005	1.28	1.6	1.6	Trace	Swim	Lakes A. G.	

ASSAYER Geo. Spalding



PHONE: 876-4111

CABLE ADDRESS "ELDRICO"

FILE NO. **A.3-1.5-65 19159**

DATE **August 23, 1965**

To:

**Kerr Addison Mines Ltd.,
402 - 1112 W. Pender St.,
Vancouver, B.C.**

**Certificate of Assay
COAST ELDRIDGE
ENGINEERS & CHEMISTS LTD.**

c.c. 1000 - 46 King St. W. Toronto 125 EAST 4TH AVE. VANCOUVER 10. CANADA

By: F. Chow, Sen. Eng. c/o Mr. K. Thompson, Box 204, Whitehorse, Y.T.

We Hereby Certify that the following are the results of assays made by us upon submitted Drill core samples

MARKED	GOLD		SILVER	Lead (Pb)	Zinc (Zn)	Copper (Cu)			
	OUNCES PER TON	VALUE PER TON	OUNCES PER TON	PER CENT.	PER CENT.	PER CENT.	PER CENT.	PER CENT.	PER CENT.
974		\$	0.28	0.75	1.00				
975			0.44	0.83	0.81				
976			0.38	1.66	1.25				
977			0.43	1.70	2.83				
978	Trace		0.30	3.85	3.22	0.06			
979	Trace		Trace	0.70	0.67	0.10			
980			0.34	0.80	0.10				
981			Trace	0.50	Trace				
982			0.68	8.78	0.67				
983			0.22	0.50	Trace				
984			0.42	0.35	Trace				
985			0.10	0.20	0.52				
986			0.52	0.50	1.54				
987	0.02	0.70	Trace	1.10	1.64	0.12			
988	Trace		Trace	0.86	1.20	1.14			

Saving A-5

*Revel
w/trace #011
Reveal #012
#992*

Gold calculated at \$.....per ounce

Note. Rejects retained one week.
Pulps retained one month.
Pulps and rejects may be stored for a maximum of one year by special arrangement.
Unless it is specifically stated otherwise, gold and silver values reported on these sheets have not been adjusted to compensate for losses and gains inherent in the fire assay process.

H. Shayes Provincial Assayer

DATE Aug 27th 1965
 FILE NO. 2414-12

ASSAY CERTIFICATE RECEIVED

WHITEHORSE ASSAY OFFICE

AUG 30 1965

P.O. BOX 346. WHITEHORSE. YUKON

KERR ADDISON GOLD MINES LTD.

RECEIVED FROM

Kerr-Addison Mines Ltd.,

Swim lanes 4.5

PER.....

SAMPLE NO.	GOLD OZ. PER TON	SILVER OZ PER TON	Lead	Zinc	Copper			
<i>D.D.H. A-5</i>								
<i>Judge</i> 989 270-280		.10	0.2	0.2			<i>Swim A-5 A-6</i>	
" 990 280-290		.40	0.2	0.4				
" 991 290-300		.18	0.1	0.4				
992 276-281 <i>medium</i>		1.50	4.6	3.0	.07			
993 - 291 <i>988</i>		.26	0.2	0.6	.07			
994 291-297		2.74	5.1	6.7	.25			
995 297-303		2.26	7.2	9.6	.15			
996 303-306		3.20	7.1	7.6	.32			
<i>A6-</i> 997 140-150 <i>Judge</i>		.48	0.1	0.5				
998 158-160 <i>"</i>		.28	0.1	0.6				
999 160-135 <i>Core</i>		.76	2.2	3.6				
1000 163.5-166.0 <i>"</i>		.52	2.8	3.7				

c.c. to Van. Toronto
 Chew.

ASSAYER

Geo. Spelding

DATE Sept 9th 1965
 FILE NO. 2474-12

ASSAY CERTIFICATE RECEIVED

WHITEHORSE ASSAY OFFICE

P.O. BOX 346. WHITEHORSE. YUKON

SEP 13 1965

KERR ADDISON GOLD MINES LTD.

RECEIVED FROM Kerr-Addison Gold Mines Ltd.

SAMPLE NO.	GOLD OZ. PER TON	SILVER OZ PER TON	Copper		Per			
<p><i>A-5</i></p> <p>276 - 281 992</p> <p>- 291 993</p> <p>- 297 994</p> <p>- 303 995</p> <p>- 306 996</p> <p>Composite 992-995</p>	<p>.04</p>		<p>.07</p> <p>.07</p> <p>.25</p> <p>.15</p> <p>.32</p>					

ASSAYER

Geo. Spalden

DATE Sept 9th 1965
 FILE NO. 2446-16

ASSAY CERTIFICATE RECEIVED

WHITEHORSE ASSAY OFFICE
 P.O. BOX 346. WHITEHORSE, YUKON
 SEP 13 1965

RECEIVED FROM Kerr Addison Gold Mines Ltd., KERR ADDISON GOLD MINES LTD.

SAMPLE NO.	GOLD OZ. PER TON	SILVER OZ PER TON	Lead	Zinc	Comb.	Per COPPER
<i>A-5</i> 306-312 001		1.48	3.9	3.9	7.8	
- 318 2		1.76	4.5	4.1	8.6	
- 320.1 3		5.92	17.7	5.2	22.7	
- 325.0 4		.40	1.1	0.4		
- 330.0 5		.72	1.5	1.3		
<i>A-G</i> 166-171 6		.84	6.0	4.8	10.8	
- 176 7		1.14	7.0	5.9	12.1	(007) TRACE
- 181 8		2.52	1.1	4.1	5.2	(008) .15
- 184.7 9		4.14	14.2	5.7	19.7	(009) .15
- 190 10		1.72	6.7	4.5	11.2	
<i>A-5</i> 268-272 11 <i>Check Sample</i>		.66	1.0	0.3		
- 276 12		Trace	1.4	1.6		
330-335 13		.60	0.7	0.4		
- 340 14		1.12	2.6	1.6		
- 345.5 15			Trace	0.2		
- 350 16		.44	0.3	0.2		

Missing results to follow

ASSAYER Geo. Spalding

DATE Sept 9th 1965
FILE NO. 2452-5

ASSAY CERTIFICATE

WHITEHORSE ASSAY OFFICE
P.O. BOX 346. WHITEHORSE. YUKON

RECEIVED
SEP 13 1965

RECEIVED FROM Kerr-Addison Gold Mines Ltd. KERR ADDISON GOLD M^{NS} LTD.

SAMPLE NO.	GOLD OZ. PER TON	SILVER OZ PER TON	Lead	Zinc	ComB	Per.....		
<i>A-5</i> 350. - 356.4 17		.44	0.3	0.3				
- 362 18		1.60	3.9	4.9	8.8			
- 567.8 19		1.12	6.3	3.3	9.9			
- 372 20		1.38	0.3	0.6				
- 377 21		.16	Trace	0.3				

ASSAYER GEO. SPALDING

RECEIVED
SEP 17 1965

DATE Sept 13th 1965
FILE NO. 2446-16

ASSAY CERTIFICATE

WHITEHORSE ASSAY OFFICE

P.O. BOX 346. WHITEHORSE. YUKON

KERR ADDISON GOLD MINES LTD.

RECEIVED FROM Kerr-Addison Gold Mines Ltd.,

Per _____

SAMPLE NO.	GOLD OZ. PER TON	SILVER OZ PER TON	Lead	Zinc	Copper			
<i>As</i> No. 12 003 315-320.1		5.92	17.7	5.2				
<i>Ag</i> 007					Trace			
<i>Ag</i> 3.5 008 176-181.0		2.52			.15			
<i>Ag</i> 1.5 009 181-184.7		4.14	14.2	5.7	.15			

ASSAYER Geo. Spalding

PHONE: MUTUAL 5-5821
File # 258277/282

CERTIFICATE OF ASSAY

J. R. WILLIAMS & SON LTD.

PROVINCIAL ASSAYERS AND CHEMISTS

Office and Laboratory:

580 Nelson Street, Vancouver 2, B. C.

Copy

I **Hereby Certify** that the following are the results of assays made by me upon samples of Ore
herein described and received from M. Kerr-Addison Gold Mines September 20th 19 65

MARKED	GOLD		SILVER		Lead		Zinc		GROSS TOTAL VALUE (2000 lbs.) Per Ton
	Ounces Per Ton	Value Per Ton	Ounces Per Ton	Value Per Ton	Per Cent.	Value Per Ton	Per Cent.	Value Per Ton	
A-5 992 276-281'		\$	1.72	\$	4.57	\$	2.25	\$	<i>Swin Lakes "A" Group A-5</i>
" 011 268-272'			0.84		1.36		0.095		
" 012 272-276'			0.94		1.48		0.77		
" 986 268-272'			0.70		0.51		0.73		
" 987 272-276'			0.50		0.89		1.97		
" 988 276-281'			0.60		Trace		0.75		

Gold calculated at \$ _____ per ounce.

Silver calculated at _____ cents per ounce.

Calculated at _____ cents per lb.

Calculated at _____ cents per lb.

Calculated at _____ cents per lb.

NOTE—Pulps of Samples retained 2 months from date of Receipt.
Rejects 1 week unless otherwise instructed.

J. Moore

Provincial Assayer.

RECEIVED
SEP 21 1965

WHITEHORSE ASSAY OFFICE

WHITEHORSE, Y. T.

KERR ADDISON GOLD MINES LTD.

Box 346

Per.....

2467-35

Savin
A-5

Savin
A-6

Number	Silver	Lead	Zinc	From	To	Length	
22	.22	0.3	Trace	377.0	383	6.0	Kerr-Addison Gold Mines Ltd.
23	.68	1.2	1.5	383	388	5.0	
24	1.76	1.3	0.7	388	393	5.0	
25	1.74	3.6	6.5	393	398	5.0	
26	1.70	2.6	4.7	398	399.8	1.8	
27	.28	0.2	0.5	399.8	401.0	1.2	
28	2.78	1.6	6.4	414.7	418.0	3.3	
29	1.28	1.5	4.5	418	422.8	4.8	
30	.60	1.0	0.2	422.8	424.2	1.4	
31	.40	0.2	0.1	424.2	430	5.8	
32	.24	0.1	0.6	447.6	452	4.4	
33	.36	Trace	0.4	452	457	5.0	
34	.52	Trace	0.5	457	462	5.0	
35	.60	"	0.2	462	467	5.0	
36	.72	0.1	0.2	467	472	5.0	
37	.88	0.1	0.3	472	477	5.0	
38	.72	Trace	0.3	477	482	5.0	
39	.68	0.5	1.1	482	488	6.0	
40	1.60	1.0	6.7	488	490.5	2.5	
41	2.28	1.7	5.0	490.5	495.5	5.0	
42	.20	Trace	Trace	495.5	502.2	6.7	
43	.56	1.0	1.7	502.2	509.3	7.1	
44	1.20	2.2	1.5	521.5	523.4	1.9	
45	2.20	1.0	6.5	523.4	526.1	2.7	
46	.32	0.2	0.7	526.1	528.0	1.9	
47	.86	1.5	1.5	528	533	5.0	
48	.18	0.2	0.4	533	538.7	5.7	
49	1.18	2.5	3.2	538.7	544	5.3	
50	.36	0.1	1.0	190	194	4.0	
51	2.96	4.7	4.1	194	197	3.0	
52	2.60	3.2	6.4	197	203	6.0	
53	3.72	2.2	7.6	203	208	5.0	
54	1.36	1.2	5.5	208	211.5	3.5	
55	1.20	1.2	6.3	211.5	217.5	6.0	
56	1.88	1.5	6.7	217.5	220	2.5	

Geo. Spalding

DATE Sept 28th 1965
 FILE NO. 2446-16

ASSAY CERTIFICATE

RECEIVED
 OCT 1 1965

WHITEHORSE ASSAY OFFICE

P.O. BOX 346. WHITEHORSE, YUKON

Kerr- Addison Gold Mines Ltd.,

RECEIVED FROM

KERR-ADDISON GOLD MINES LTD.

SAMPLE NO.	GOLD OZ. PER TON	SILVER OZ PER TON	Lead	Zinc	Copper
Rerun A-6 050 190-194		.28	0.1	1.0	
A-5 1,2,3, 306 - 320.1	.02				
A-5 018,019 356.4 - 367.8	.02				
A-6 999,1000 160 - 166	.01				
A-6 6,7,8,9,10 166 - 190	.02				
306 - 312 1					.52
312 - 315 2					.60
315 - 320.1 3					Trace
160 - 163.5 999					.21
163.5 - 166 1000					.13
166 - 171 6					.13
171 - 176 7					Trace
176 - 181 8					.15
181 - 184.7 9					.15
184.7 - 190.0 10					.07

cs. Toronto - Oct 6th, 65

ASSAYER Geo Spalding

DATE Sept 29th 1965FILE NO. 2499-10

ASSAY CERTIFICATE

WHITEHORSE ASSAY OFFICE

P.O. BOX 346. WHITEHORSE. YUKON

RECEIVED
OCT 1 1965

RECEIVED FROM

Kerr-Addison Mines Ltd.,

SAMPLE NO.	GOLD OZ. PER TON	SILVER OZ PER TON	Lead	Zinc	Copper	KERR ADDISON GOLD MINES LTD.	
						Per Gms	
<i>From To Length</i> 220-226 6.0	57	2.20	2.3	7.0	.07	9.3	
226-228 2.0	58	2.44	0.7	7.4	.15	8.1	
228-234 6.0	59	2.04	10.5	9.2	.18	19.5	WIM LAKE S
234-242 8.0	60	4.22	3.1	9.4	.01	12.4	
242-243 1.0	61	1.28	2.9	6.2	.07	9.1	"A" - 6
243-248 5.0	62	.44	1.1	3.2	Trace	4.3	
248-252.5 4.5	63	.94	2.8	3.6	.03	6.4	
180-190	64 SLUDGE	2.10	7.1	5.2		12.3	
190-200	65 SLUDGE	1.92	3.1	4.9		8.0	
200-210	66 SLUDGE	2.22	1.0	6.0		7.0	

cc. Toronto - Oct 6th 65

ASSAYER

Geo. Spalding

c.c.

DATE Oct 31st 1965
FILE NO. 2452-5, 2467-35

ASSAY CERTIFICATE

WHITEHORSE ASSAY OFFICE

P.O. BOX 346. WHITEHORSE. YUKON

RECEIVED FROM Kerr Addison Mines Ltd.

cc PMK - Nov 2nd, 65

SAMPLE NO.	GOLD OZ. PER TON	SILVER OZ PER TON	Copper	Sample Number	Copper			
393 - 399.8 025-026	.01 ✓			045	.15	523.4 - 526.1	} A-5	
414.7 - 422.8 028-029	.01			049	.07	538.7 - 544.0		
488 - 495.5 040-041	.005			050	Trace	190 - 194		
490 - 497.5 050-063 - A-6	.03			051	.15	194 - 197	} A-6	
521.5 - 523.4 044	.01			052	.18	197 - 203		
523.4 - 526.1 045	.005			053	.22	203 - 208		
538.7 - 544.0 049	.01			054	.30	208 - 211.5		
				055	.22	211.5 - 217.5		
				056	.15	217.5 - 220		
356.4 - 362.0 018			.01					
362.0 - 367.8 019			.07 ✓					
393.0 - 398.0 025			.03 ✓					
398.0 - 399.8 026			.15 ✓					
414.7 - 418.0 028			.12				} A-5	
418.0 - 422.8 029			.15					
488 - 490.5 040			.30					
490.5 - 495.5 041			.18					
521.5 - 523.4 044			.07					

ASSAYER

Geo. Spalding

Geochemical Results

Cu/Zn

SCUM LAKE S AREA 105-K-4

	Copper	Zn	PPH	Cu/Zn
S.L. 1	* 130	80	✓	.18
2	30 30	110	✓	.2
3	40	90		.45
4	50	140	✓	.35
5	40	160	✓	.25
6	40	100		.40
7	20	110		.15
8	130	250	✓	.45
9	X	100		.10
10	50	140	✓	.30
11	20	90		.25

DATE June 1, 1966
 FILE NO. 2840-53

ASSAY CERTIFICATE

WHITEHORSE ASSAY OFFICE

P.O. BOX 346, WHITEHORSE, YUKON

RECEIVED FROM Kerr Addison

SAMPLE NO.	GOLD OZ. PER TON	SILVER OZ PER TON	Lead	Zinc	From	TO	FT	Rec.
DB# <u>AGA</u>								
67		1.52	8.6	6.8	154	159	5.0	1.0
68		1.14	4.9	2.6	154	159	5.0	1.4
69		2.10	6.0	4.8	159	161	2.0	2.0
70		1.14	5.5	6.4	161	163	2.0	4.5
71		1.92	8.2	6.7	163	168	5.0	

RECEIVED
 JUN 2 1966
 KERR ADDISON
 MINES LTD.
 Per.....

ASSAYER

Geo. Spalding

DATE June 1, 1966
 FILE NO. 2840-53

ASSAY CERTIFICATE

WHITEHORSE ASSAY OFFICE

P.O. BOX 346, WHITEHORSE, YUKON

RECEIVED FROM Kerr Addison

SAMPLE NO.	GOLD OZ. PER TON	SILVER OZ. PER TON	Lead	Zinc	From Copper	TO	FT.	Loc.
DDH #A-6A 72		1.34	4.8	5.4	173	178	5.0	4.0
73		3.06	10.1	10.6	178	183	5.0	5.0
74		1.34	3.2	5.5	183	188	5.0	5.0
75		3.04	6.3	5.4	188	193	5.0	5.0
76		2.34	5.0	8.4	193	199	6.0	1.1
77		2.60	9.3	7.2	199	205.5	6.5	0.6
78		3.52	8.6	10.1	205.5	218.5	13.0	0.6
79		3.02	9.5	12.7	218.5	222	3.5	0.6
80		1.54	3.5	7.1	222	227	5.0	2.7
81		1.50	5.7	6.5	227	228.5	1.5	0.6
82		3.34	10.3	10.9	228.5	232	3.5	0.7
83		.12	1.2	1.8	232	242	10.0	0.5
84		.14	1.2	1.4	242	245	3.0	3.0
85		.48	1.1	1.6	245	250	5.0	5.0
86		.26	.5	1.1	250.49	260	10.0	9.0
87		.42	.3	1.4	260	263	3.0	3.0
88		.68	1.1	1.7	263	268	5.0	5.0
89		.02	Tr	1.0	268	271.8	3.8	3.8
90		.32	2.1	3.8	271.8	288	6.0	6.0
91		.62	1.8	2.8	288	294.8	6.8	6.8
92		Tr	Tr	.1	300.7	306.0	5.3	5.3
93		.10	Tr	1.1	306.0	311.0	5.0	5.0
94		.10	Tr	1.2	311.0	316.0	5.0	5.0
95		.12	Tr	.7	316.0	321.0	5.0	5.0
96		.02	Tr	.6	321.0	326.0	5.0	5.0
97		Tr	1.3	2.4	326.0	330.0	4.0	3.7
98		.32	1.5	1.1	334.7	340.0	5.3	5.3
99		.04	.3	Tr	340.0	342.1	2.1	2.1
100		.54	2.7	.1	342.1	348.0	5.9	5.7
101		1.12	2.9	3.4	180.0	190.0	10.0	
102		4.60	13.4	7.9	190	200	10.0	
103		.62	1.8	1.1	200	205	5.0	
104		4.18	11.0	6.5	205	210	5.0	
105		4.32	13.2	12.3	210	215	5.0	
106		2.72	7.9	8.5	215	220	5.0	
107		4.56	13.8	14.5	220	225	5.0	
108		3.84	12.0	12.4	225	230	5.0	
109		2.80	8.5	7.2	230	235	5.0	
110		2.02	7.5	4.7	235	240	5.0	
111		.24	1.1	Tr	348.0	352.0	4.0	4.0
112		.28	Tr	.7	352.0	355.0	3.0	3.0
113		.30	1.6	3.5	355.0	360.0	5.0	5.0
114		.70	1.9	1.8	360.0	365.0	5.0	5.0
115		.74	2.2	1.3	365.0	369.5	4.5	4.2
116		.18	1.4	.1	369.5	374.5	5.0	5.0
117		.66	2.1	1.9	374.5	379.5	5.0	5.0
118		* .50	Tr	1.4	379.5	381.5	2.0	2.0
119		Tr	Tr	Tr	381.5	387.0	5.5	5.1

sludge

Run Composite for Cx+Au

RERUN ON #118 1.1 Pb 1.27 Zn .64 Ag

ASSAYER *Geo Spalden*



Telecommunications

send this message subject to the terms on back
dépêche à expédier aux conditions énoncées au verso

To: Geo. Spalding,
Whitehorse Assay Office,
Whitehorse, Y. T.

June 3/66

Please rerun no. 118 for Pb-Zn-Ag. Also run composite of 067 to 082 inclusive
for Cu and Au. *red d* *red d*

WMS

Sent 3:30 P.M.

check mots	full rate plein tarif	day letter lettre de jour	night letter lettre de nuit	tolls coût
charge account no. numéro du compte	cash number numéro de caisse			
sender's name for reference only nom de l'expéditeur pour référence seulement				
address and telephone adresse, téléphone				

6102b

DATE June 4, 1966
 FILE NO. 2840

ASSAY CERTIFICATE

WHITEHORSE ASSAY OFFICE

P.O. BOX 346. WHITEHORSE. YUKON

RECEIVED

RECEIVED FROM Kerr Addison

SAMPLE NO.	GOLD OZ. PER TON	SILVER OZ PER TON	Copper	Lead	Zinc	FROM	TO	SAMPLE LENGTH
Composite 067-082	.01		.16 ✓			KERR ADDISON	MINES LTD.	
Reruns #105 A-6A } SLUDGE	4.32			13.2	12.3 ✓		210 - 215	5.0
109	2.80			8.5	7.2		230 235	5.0
118	.64			1.1	1.2 ✓		379.5 381.5	2.0

ASSAYER Geo. Spaldin

DATE June 16, 1966
 FILE NO. 2876-13

ASSAY CERTIFICATE

WHITEHORSE ASSAY OFFICE

P.O. BOX 346. WHITEHORSE. YUKON

RECEIVED FROM Kerr Addison

SAMPLE NO.	GOLD OZ. PER TON	SILVER OZ PER TON	Lead	Zinc	FROM	TO	REC
						RECEIVED	
<u>A-9</u> ✓142		.38	Tr	1.0	407.2	410.0	2.8
✓143		.46	.1	.7	410.0	415.0	5.0
✓144		.28	Tr	.6	415.0	420.0	5.0
✓145		Tr	.2	1.2	420.0	425.0	5.0
✓146		1.12	3.7	5.1	429.0	434.1	5.1
✓147		.56	.2	Tr	440.0	443.5	3.5
✓148		1.40	2.8	3.4	443.5	445.0	1.5
✓149		.52	1.2	1.2	445.0	450.0	5.0
✓150		.32	.2	1.1	450.0	455.0	5.0
✓151		.40	.2	1.2	455.0	460.0	5.0
✓152		.44	.1	1.1	460.0	465.0	5.0
✓153		.36	Tr	1.2	465.0	470.0	5.0
✓154		.30	.1	.6	470.0	474.7	4.7

TO REC
RECEIVED
 JUN 20 1966
 KERR ADDISON
 KERR ADDISON MINES LTD.

ASSAYER Geo. Spalding

DATE June 17, 1966
 FILE NO. 2878-56

ASSAY CERTIFICATE

WHITEHORSE ASSAY OFFICE

P.O. BOX 346. WHITEHORSE. YUKON

RECEIVED
 JUN 20 1966
 KERR ADDISON MINES LTD.

RECEIVED FROM Kerr Addison

SAMPLE NO.	GOLD OZ. PER TON	SILVER OZ. PER TON	Lead	Zinc	Per		SAMPLE LENGTH
					FROM	TO	
DDH #A-9 155		.40	.2	1.0	515.7	520.0	4.3
156		.08	Tr	1.0	520.0	525.0	5.0
157		.44	Tr	.6	525.0	530.0	5.0
158		.04	.3	.5	530.0	534.5	4.5
159		1.32	2.7	4.7	534.5	540.7	6.2
160		.72	Tr	1.0	540.7	545.0	4.3
161		1.16	5.4	5.4	545.0	547.7	2.7
162		.72	1.7	2.4	547.7	551.7	4.0
163		.86	.1	1.4	551.7	554.0	2.3
164		.18	.1	.7	554.0	555.5	1.5
165		.40	1.4	2.1	555.5	557.7	2.2
166		.98	1.3	2.1	562.7	565.1	2.4
167		.22	2.6	2.2	567.5	569.3	1.8
168		1.02	2.3	4.2	572.8	576.9	4.1
DDH #A-12 169		1.48	1.4	2.7	143.0	146.0	2.0
170		.68	.5	1.5	146.0	151.0	5.0
171		.32	.1	.5	151.0	156.0	5.0
172		.36	.2	.7	156.0	161.7	5.7
173		.30	Tr	.6	180.0	185.0	5.0
174		.74	Tr	.1	185.0	190.0	5.0
175		.24	.1	Tr	190.0	194.6	4.6
176		.30	Tr	.7	194.6	200.0	5.4
177		.30	Tr	.7	200.0	205.0	5.0
178		.64	.3	.1	205.0	213.0	8.0
179		.16	Tr	.1	213.0	217.6	4.6
180		.14	.1	Tr	277.6	279.1	1.5
181		.38	.1	3.4	279.1	282.0	2.9
182		.40	.7	.5	282.0	290.0	8.0
183		.32	.2	.1	290.0	300.0	10.0
184		.08	.6	1.7	300.0	310.0	10.0
185		.54	Tr	1.3	310.0	320.5	10.5
186		.54	3.0	4.9	320.5	325.0	4.5
187		.62	6.8	6.0	325.0	330.0	5.0
188		.92	5.7	5.8	330.0	335.0	5.0
189		.38	4.2	3.1	335.0	340.0	5.0
190		.28	.5	1.7	340.0	341.5	1.5
191		.14	1.1	Tr	341.5	347.5	6.0
192	1.10	1.10	5.2	2.8	347.5	350.0	2.5
193	1.76	1.76	4.3	3.6	350.0	355.0	5.0
194		1.94	4.1	2.7	355.0	360.0	5.0
195		.36	1.3	2.4	360.0	365.0	5.0
196		1.34	4.2	4.7	365.0	370.0	5.0
197		1.66	4.7	3.2	370.0	375.0	5.0
198		.76	1.7	2.3	375.0	380.0	5.0
199		1.16	2.4	4.6	380.0	384.9	5.0
200		2.20	4.1	8.9	384.9	389.0	4.1
201		1.72	4.1	5.3	389.0	394.0	5.0
202		1.80	5.0	6.0	394.0	399.0	5.0

Run for Ag

Run for Cu and Au

ASSAYER Geo. Spalding

DATE June 17, 1966
 FILE NO. 2873-22

ASSAY CERTIFICATE

WHITEHORSE ASSAY OFFICE

P.O. BOX 346. WHITEHORSE. YUKON

RECEIVED

JUN 20 1966

RECEIVED FROM Kerr Addison

SAMPLE NO.	GOLD OZ. PER TON	SILVER OZ. PER TON	Lead	Zinc	Copper	FROM		Per.....
						KERR ADDISON	MINES LTD.	
<i>DDH #A-6A</i> 120		Tr	Tr	.1		387.0	393.0	6.0
121		.22	.1	.1	.07	393.0	398.0	5.0
122		.66	.3	.5	.22	398.0	403.0	5.0
123		.46	1.3	.1	.30	403.0	408.0	5.0
124		.80	.7	1.2		408.0	413.0	5.0
125		.08	.6	2.1		413.0	418.0	5.0
126		.62	.6	3.2		418.0	473.0	5.0
127		.58	.3	Tr		423.0	425.8	2.8
128		1.60	6.4	7.1		425.8	429.2	3.4
129		.30	.2	.7		441.4	446.0	4.6
130		.32	Tr	.6		460.5	465.5	5.0
131		1.84	5.7	6.6		465.5	469.6	3.5
132		1.20	5.4	4.8		469.0	474.2	5.2
133		.22	.2	1.0		474.2	476.5	2.3
<i>A-9</i> 134		.16	Tr	Tr		183.5	188.5	5.0
135		.16	.1	Tr		188.5	191.7	3.2
135		.16	.1	Tr				
<i>Sluciges</i> 136		.52	.2	.5		147	158	11.0
<i>Sal</i> 137		.20	Tr	.3		158	163	5.0
<i>A-6-A</i> 138		.56	1.8	3.2		163	170	7.0
139		1.32	4.2	4.4		170	180	10.0
<i>A-9</i> 140		.02	Tr	Tr		271.0	276.0	5.0
141		.48	Tr	Tr		276.0	281.0	5.0

ASSAYER *Geo. Spalding*

DATE June 17, 1966
 FILE NO. 2878-56 (Cont'd)

ASSAY CERTIFICATE

WHITEHORSE ASSAY OFFICE
 P.O. BOX 346. WHITEHORSE. YUKON

RECEIVED
 JUN 20 1966

RECEIVED FROM Kerr Addison

KERR ADDISON MINES LTD.

SAMPLE NO.	GOLD OZ. PER TON	SILVER OZ PER TON	Lead	Zinc	FROM	Per.....		
						TO	WEIGHT	
DDH#A-12 ✓203		.28	Tr	Tr	399.0	405.6	6.6	
✓204		1.88	3.7	4.4	405.6	409.4	3.8	
✓205		.20	.1	.2	409.6	412.0	2.6	
*✓206		1.16	2.3	2.9	412.0	417.0	5.0	
*✓207		.96	1.8	2.8	417.0	422.8	5.8	
✓208		.44	.4	1.0	422.8	426.5	3.7	
✓209		1.44	1.5	2.2	426.5	429.0	2.5	
✓210		.24	.6	1.2	429.0	434.5	5.5	

* Should be re-run

ASSAYER Geo. Spalding



Telecommunications

send this message subject to the terms on back
dépêche à expédier aux conditions énoncées au verso

Y5

June 21/66

to: George Spalding,
Whitehorse Assay Office,
Whitehorse, Y. T.

Please rerun samples 186 to 193 ^{red d} inclusive for Ag and run
composites for Cu and Au on the following samples, 113 - 117 ^{red d}
inclusive, 131 - 132 inclusive, and 186 - 202 inclusive.
red d red d

WMS

copy to PMK June 22/66

check mots	full rate plein tarif	day letter lettre de jour	night letter lettre de nuit	tolls coût
charge account no. numéro du compte	cash number numéro de caisse			
sender's name for reference only nom de l'expéditeur pour référence seulement				
address and telephone adresse, téléphone				

DATE June 22, 1966
 FILE NO. 2898-18

ASSAY CERTIFICATE

WHITEHORSE ASSAY OFFICE

2906-5

P.O. BOX 348. WHITEHORSE. YUKON

RECEIVED FROM Kerr Addison

RECEIVED
 24 1966
 FROM MINES LTD.

SAMPLE NO.	GOLD OZ. PER TON	SILVER OZ. PER TON	Lead	Zinc	Copper	TO	LENGT	
Lot 2898-18	<u>D.D.H. A 13</u>							
✓211	7.3-129.2-136.5	.32	Tr	1.0				
✓212	5.7-136.5-142.2	.76	.3	1.1				
✓213	10.0-197.0 Tr 207.0	.04	Tr	Tr	.22			
✓214	10.0-241.0 Tr 251.0	.12	.2	Tr	.30			
✓215	4.4-327.2-331.6	.20	.2	1.6				
✓216	4.5-406.5-411.0	.18	Tr	.5				
✓217	3.4-411.0-414.4	.08	Tr	.5				
✓218	2.5-457.7-460.2	.20	Tr	.6				
✓219	5.8-460.2-466.8	.64	Tr	.6				
✓220	6.1-466.0-472.1	.72	.2	1.1				
✓221	4.9-472.1-477.0	1.56	3.6	5.7	} 9.9'			
✓222	3.0-477.7-482.8	1.40	3.4	4.3				
✓223	7.6-488.4-490.0	.72	.1	.5				
✓224	7.0-496.0-503.0	.40	.3	1.1				
✓225	7.2-503.0-510.2	.64	.2	1.3				
✓226	4.6-510.2-514.8	1.64	4.6	5.2	} 4.6'			
✓227	4.6-514.8-519.4	.30	Tr	1.2				
✓228	2.6-519.4-522.0	.38	.1	1.6				
Lot No. 2906-5	<u>D.D.H. # A-10</u>							
✓229		.82	1.0	2.4		62.0	64.6	2.6
✓230		.46	.7	1.6		64.6	67.0	2.4
✓231		.32	Tr	Tr		76.0	82.0	6.0
✓232		.20	Tr	.1		82.0	87.7	5.7
✓233		.70 .70	2.9	5.5		98.0	102.6	4.6

ASSAYER

Geo. Spalden jr



send this message subject to the terms on back
dépêche à expédier aux conditions énoncées au verso

June 27/66

To: Mr. G. Spalding,
Whitehorse Assay Office,
Whitehorse, Y. T.

rec'd
Please rerun sample number 146 and 226 for copper and gold; also,
the following two composites 159 to 161 inclusive and 221 to 222,
inclusive for copper and gold. *rec'd* *rec'd*

L. Krupp

copy to PMK June28/66

check mots	full rate plein tarif	day letter lettre de jour	night letter lettre de nuit	tolls coût
charge account no. numéro du compte	cash number numéro de caisse			
sender's name for reference only nom de l'expéditeur pour référence seulement				
address and telephone adresse, téléphone				

Reveries on A-12

	<u>AS</u>
186	1.52
187	1.36
188	.92
189	.68
190	.20
191	.12
192	1.10
193	1.76

Reveries on A-12 for
Silver

DATE July 4, 1966
 FILE NO. Reruns

ASSAY CERTIFICATE

WHITEHORSE ASSAY OFFICE
 P.O. BOX 346, WHITEHORSE, YUKON

RECEIVED
 JUL 7 1966

RECEIVED FROM Kerr Addison

KERR ADDISON
 MINES LTD.

SAMPLE NO.	GOLD OZ. PER TON	SILVER OZ PER TON	Copper	Per.....		
2840-53 Comp. #113-117 ✓	.005		.22	DDH-#A-6A		
2873-22 Comp. #131-132 ✓	.01		.21	DDH-#A-6A		
2878-56 ✓ Comp. 186-202	.005		.18	DDH-#A-12		
2876-13 #146 Rerun ✓	.02		.15	DDH-#A-9		
2898-18 #226 Rerun ✓	.04		.22	DDH-#A-13		
2878-56 Comp. #159-161 ✓	.005		.15	DDH-#A-9		
2898-18 Comp. #221-222 ✓	.02		.16	DDH-#A-13		

ASSAYER

Geo. Spadun

DATE July 6, 1966
 FILE NO. 2921-27

ASSAY CERTIFICATE

WHITEHORSE ASSAY OFFICE

P.O. BOX 346. WHITEHORSE. YUKON

RECEIVED
 JUL 7 1966

RECEIVED FROM Kerr Addison

KERR ADDISON MINES LTD.

SAMPLE NO.	GOLD OZ. PER TON	SILVER OZ. PER TON	Lead	Zinc	FROM TO		LENGTH
					FROM	TO	
<u>D.D.H-A-10</u> 234		.44	1.8	2.2	344.0	348.5	4.5
235		.68	1.7	3.0	348.5	353.0	4.5
236		1.16	.6	2.7	353.0	356.2	3.2
237		3.24	4.0	5.0	356.2	360.9	4.7
238		1.76	2.1	5.1	360.9	365.9	5.0
239		1.36	1.6	3.2	365.9	369.2	3.3
240		3.00	4.1	10.7	369.2	371.0	1.8
241		3.56	5.0	9.1	371.0	373.0	2.0
242		2.40	4.5	5.8	373.0	378.0	5.0
243		.44	.1	3.2	378.0	383.0	5.0
244		1.04	.6	1.0	383.0	385.5	2.5
245		1.32	1.7	3.5	385.5	389.1	3.6
246		1.24	1.2	2.5	389.1	394.0	4.9
247		.24	.5	1.5	394.0	396.4	2.4
248		1.16	1.8	4.5	396.4	400.5	4.1
249		1.84	2.8	3.9	400.5	405.5	5.0
250		1.16	1.5	1.6	405.5	408.4	2.9
251		1.76	3.2	8.4	408.4	413.5	5.1
252		1.88	3.1	7.9	413.5	418.0	4.5
253		.56	1.2	5.5	418.0	423.0	5.0
254		.60	.6	4.1	423.0	428.0	5.0
255		.68	1.0	3.4	428.0	433.0	5.0
256		.68	1.2	4.8	433.0	438.0	5.0
257		1.36	2.3	4.7	438.0	441.4	3.4
258		.96	1.9	3.6	441.4	444.7	3.3
259		.72	Tr	1.2	444.7	448.7	4.0
260		.80	Tr	Tr	448.7	452.2	3.5
<u>D.D.H-A-15</u>							
261		.12	Tr	Tr	300.0	302.3	2.3
262		.60	1.2	3.3	302.3	304.0	1.7
263		.28	1.1	2.5	304.0	309.0	5.0
264		.84	1.6	3.0	309.0	314.0	5.0
265		.72	2.4	3.8	314.0	319.0	5.0
266		.56	1.3	2.5	319.0	324.0	5.0
267		.92	1.3	1.9	324.0	329.0	5.0
268		.44	.6	1.9	329.0	334.0	5.0
269		.12	1.1	2.8	334.0	339.0	5.0
270		.12	1.1	3.1	339.0	344.0	5.0
271		1.04	3.6	4.7	344.0	348.5	4.5
272		1.56	3.6	7.9	348.5	352.9	4.4
273		.20	.2	1.1	352.9	355.6	
274		.30	.3	.6	452.2	456.5	4.3

D.D.H-A-10

ASSAYER

Geo. Spalding

DATE July 11, 1966
 FILE NO. 2953-24

ASSAY CERTIFICATE

WHITEHORSE ASSAY OFFICE

P.O. BOX 346. WHITEHORSE. YUKON

RECEIVED
 JUL 17 1966
 WHITEHORSE YUKON

RECEIVED FROM Kerr Addison

SAMPLE NO.	GOLD OZ. PER TON	SILVER OZ. PER TON	Lead	Zinc	FROM TO		LENGTH
		<u>D. D. H. A-14</u>					
✓275		.08	.1	1.1	224.0	230.0	6.0
✓276		.16	.1	.7	230.0	237.7	7.7
✓277		Tr	.2	1.6	248.8	257.0	8.2
✓278		Tr	Tr	.3	296.7	303.7	7.0
✓279		.22	.3	1.3	303.7	305.5	1.8
✓280		.44	.3	.7	410.7	418.3	7.6
✓281		.44	Tr	.7	418.3	423.3	5.0
✓282		1.68	4.0	4.7	423.3	427.3	4.0
✓283		1.84	3.4	4.5	427.3	430.3	3.0
✓284		1.48	2.3	2.7	430.3	434.1	3.8
✓285		.84	4.3	5.6	434.1	437.3	3.2
✓286		.84	.7	1.5	437.3	441.0	3.7
✓287		.60	.1	.6	441.0	446.0	5.0
✓288		.80	.1	.1	446.0	449.7	3.7
✓289		.68	1.4	2.1	449.7	455.0	5.3
✓290		1.28	3.3	4.9	455.0	458.4	3.4
✓291		.98	1.5	4.7	458.4	459.4	1.0
✓292		2.88	4.5	5.8	459.4	463.4	4.0
✓293		.52	.1	.4	463.4	469.0	5.6
✓294		.96	2.4	2.9	469.0	474.5	5.5
✓295		.20	1.0	2.7	474.5	479.0	4.5
✓296		.08	Tr	Tr	479.0	485.0	6.0
✓297		.88	1.6	2.3	485.0	490.0	5.0
✓298		.16	.3	.1	490.0	492.0	2.0

ASSAYER

Geo. Spalding

A10

7-269

<u>From</u>	<u>To</u>	<u>Find</u>	<u>Spalding</u>
378	383	11%	3.3% #243
396.4	400.5	0.5%	6.3% #248
441.4	444.7	10%	6.5% #258
353.0	356.2	7%	3.3% #236

#243

(378 - 383) re run. 10% negative

396.4 - corrected. K

441.4 "

353 - 356.2 Assay Office correct.

#236

21.8'

352.2 - 3780 = 24 Ag 34 Pb

5.8 Zn.

88.5' 356.2 - 444.7

1.4 Ag 2.0 Pb

4.6 Zn.

66.8 356.2 - 423.

1.6 Ag

2.3 Pb

4.8 Zn.

14.6' 4084 - 423.0

1.4 Ag

2.5 Pb

7.2 Zn.

DATE July 12, 1966
 FILE NO. 2878-56

ASSAY CERTIFICATE

WHITEHORSE ASSAY OFFICE

P.O. BOX 346. WHITEHORSE. YUKON

RECEIVED FROM Kerr Addison

SAMPLE NO.	GOLD OZ. PER TON	SILVER OZ PER TON	FROM	TO	STAMP LENGTH	
		<i>Berenson</i>	<i>A-12</i>			
186		1.52	320.5	325.0	4.5	
187		1.36	325.0	330.0	5.0	
188		.92	330.0	335.0	5.0	
189		.68	335.0	340.0	5.0	
190		.20	340.0	341.5	1.5	
191		.12	341.5	347.5	6.0	
192		1.10	347.5	350.0	2.5	
193		1.76	350.0	355.0	5.0	

RECEIVED
 JUL 1 1966
 MINES DIV.

ASSAYER Geo. Spadan

ASSAY CERTIFICATE

DATE July 13, 1966
 FILE NO. 2969-20, 2981-7

WHITEHORSE ASSAY OFFICE
 P.O. BOX 346. WHITEHORSE, YUKON

Rec'd July 14/66

RECEIVED FROM Kerr Addison

RECEIVED
 JUL 14 1966

SAMPLE NO.	GOLD OZ. PER TON	SILVER OZ. PER TON	Lead	Zinc	FROM TO		LENGTH	
2969-20			<u>D.D.H. A-17</u>					
✓299		1.08	2.1	1.7	169.5	171.5	2.0	
✓300		.28	.3	.1	171.5	175.0	3.3	
✓301		.16	.1	Tr	175.0	185.0	2.0	
✓302		.56	.3	1.3	185.0	195.0	10.0	
✓303		.68	.6	1.3	195.0	205.0	10.0	
✓304		.64	.3	1.1	205.0	210.0	5.0	
✓305		.72	.5	1.6	210.0	215.0	5.0	
✓306		.60	.6	.7	215.0	220.0	5.0	
✓307		.44	Tr	1.4	220.0	224.5	4.5	
✓308		.72	2.0	2.4	224.5	229.0	4.5	
✓309		.92	2.4	2.7	229.0	234.0	5.0	
✓310		1.12	1.2	1.4	234.0	239.0	5.0	
✓311		.64	.1	.5	239.0	244.0	5.0	
✓312		.64	.3	.5	244.0	249.0	5.0	
✓313		.48	.1	1.4	249.0	254.0	5.0	
✓314		.48	1.1	1.2	254.0	259.0	5.0	
✓315		.72	1.3	.6	259.0	264.0	5.0	
✓316		1.32	3.0	1.2	264.0	269.0	5.0	
✓317		.60	.4	.1	269.0	273.0	3.5	
✓318		SKUDGE Tr	Merun	.1	.1	170.0	180.0	10.0
2981-7								
✓319		.76	Tr	1.0	297.3	305.0	7.0	
✓320		1.52	.1	Tr	310.0	315.0	5.0	
✓321		.76	.2	.5	315.0	325.0	10.0	
✓322		1.28	.3	1.1	325.0	335.0	10.0	
✓323		1.40	.7	1.7	335.0	340.0	5.0	
✓324		1.00	1.2	1.6	340.0	344.3	4.3	
✓325		.60	.5	1.5	347.0	348.8	1.8	

Rec'd July 18/66

ASSAYER

Geo. Spalding

DATE July 14, 1966
 FILE NO. 3001-1

ASSAY CERTIFICATE

WHITEHORSE ASSAY OFFICE
 P.O. BOX 346. WHITEHORSE. YUKON

RECEIVED FROM Kerr Addison

RECEIVED
 JUL 18 1966

SAMPLE NO.	GOLD OZ. PER TON	SILVER OZ PER TON	Lead	Zinc			
<i>F-1</i> <i>Flook 1-</i>		<i>2.06</i>	<i>16.4</i>	<i>7.4</i>			
Lot No. 2969-20 Rerun # 318 <i>A-17</i>		<i>Tr</i> ✓	<i>.1</i>	<i>.1</i>	<i>170.0</i>	<i>180.0</i>	<i>10.0</i>
Lot No. 2921-27 # 243 <i>A-10</i>		<i>.78</i> ✓	<i>1.8</i>	<i>3.7</i>	<i>378.0</i>	<i>383.0</i>	<i>5.0</i>

KERR ADDISON
 MINES LTD.
 Per...
This is the sample I was picked up on the property

ASSAYER *Geo. Spalding*

DATE
FILE NO.

July 26, 1966
3032-70

ASSAY CERTIFICATE

WHITEHORSE ASSAY OFFICE

P.O. BOX 346. WHITEHORSE. YUKON

RECEIVED
AUG 1 1966

RECEIVED FROM Kerr Addison

SAMPLE NO.	GOLD OZ. PER TON	SILVER OZ. PER TON	Lead	Zinc	KERR ADDISON		MINES LTD. LENGTH
					FROM	TO	
✓326	DDH #A-18	.48	1.3	3.7	465.0	475.0	10.0
✓327	"	.64	3.4	6.7	475.0	483.0	8.0
✓328	DDH #A-14	Tr	.1	Tr	361.0	311.0	10.0
✓329		.10	.2	.5	341.5	346.8	5.3
✓330		.32	1.8	1.1	346.8	347.8	1.0
✓331		Tr	.1	Tr	347.8	352.4	4.6
✓332		.42	1.4	3.7	352.4	359.5	7.1
✓333		.40	.2	.1	359.5	364.5	5.0
✓334	DDH #A-19	.32	.2	Tr	73.0	83.0	10.0
✓335		1.08	2.9	2.9	83.0	85.0	2.0
✓336		1.14	3.9	3.3	85.0	90.0	5.0
✓337		1.56	3.3	.6	90.0	93.0	3.0
✓338		1.32	3.8	2.6	93.0	99.0	6.0
✓339		1.68	9.6	4.9	99.0	100.0	1.0
✓340		1.52	4.7	3.3	100.0	103.0	3.0
✓341		.64	1.7	2.0	103.0	103.0	3.0
✓342		.68	1.8	2.3	103.0	103.0	5.0
✓343		.68 Rerun	2.0	1.9	174.5	176.0	1.5
✓344		.96 Rerun	4.4	2.3	176.0	178.5	2.5
✓345		.64	1.5	1.8	178.5	183.0	4.5
✓346		1.48	2.7	3.1	183.0	187.0	4.0
✓347		1.36	3.1	5.1	187.0	189.0	2.0
✓348		2.56 Rerun	6.9	7.5	103.0	108.0	5.0
✓349		1.44	5.0	5.3	108.0	113.0	5.0
✓350	DDH #A-16	1.32	.1	.6	443.0	446.5	3.5
✓351	"	.36	.5	1.1	446.5	452.7	6.2
✓352	"	Rerun	3.3	4.5	D.O.H # A-16 452.7	454.6	1.9
DDH #A-19/356	SLUDGE	.20	.5	.7	73.0	83.0	10.0
✓357	"	1.00	1.5	1.6	83.0	90.0	7.0
✓358	"	.60	1.9	1.7	90.0	100.0	10.0
✓359	"	1.20	2.7	1.7	100.0	110.0	10.0
✓360	"	.92	2.1	1.7	110.0	120.0	10.0
✓361	"	.84	1.9	1.7	120.0	130.0	10.0
✓362	"	.52	1.1	1.3	160.0	170.0	10.0
✓363	"	.52	1.5	1.6	170.0	180.0	10.0
✓364	"	.64	1.6	1.9	180.0	190.0	10.0
✓365	"	.76	2.2	1.8	190.0	205.0	15.0
✓366	"	.68	1.7	2.2	205.0	210.0	5.0
✓367	"	.72	1.8	2.9	210.0	215.0	5.0
✓368	"	.64	1.6	2.4	220.0	225.0	5.0
✓369		Rerun	2.4	2.8	225.0	230.0	5.0
✓370		.28	Tr	1.9	189.0	193.0	4.0
✓371		2.92	8.4	9.2	193.0	195.0	2.0
✓372		1.20	1.7	1.6	195.0	206.0	11.0
✓373		.76	2.2	1.9	206.0	216.0	10.0
✓374		.64	1.8	3.1	216.0	216.5	0.5
✓375		1.08	3.1	7.7	216.5	220.5	4.0

ASSAYER

Geo. Spalding

DATE July 27, 1966
 FILE NO. 3032-70 Reruns
3052-25 Reruns

ASSAY CERTIFICATE

WHITEHORSE ASSAY OFFICE

P.O. BOX 346. WHITEHORSE. YUKON

RECEIVED FROM

Kerr Addison

SAMPLE NO.	GOLD OZ. PER TON	SILVER OZ PER TON	Lead	Zinc	Copper			
Lot No. 3032-70 #343	<i>D.O.H.</i>	<i>A-19</i>						
✓ 344	.68	.68	2.0	1.9		174.5	176.0	1.5
✓ 348	.96	.96	4.4	2.3		176.0	178.5	2.5
✓ 352	2.56	2.56	6.9	7.5		103.0	108.0	5.0
<i>A-16</i> ✓ 352	1.36	1.36	3.3	4.5		452.7	454.6	1.9
<i>A-19</i> ✓ 369 <i>alridge</i>	1.04	1.04	2.4	2.8		225.0	230.0	5.0
✓ 380	.88	.88	1.7	3.1		215.0	220.0	5.0
✓ 384	.84	.84	2.5	2.8		240.0	245.0	5.0
✓ 395	1.16	1.16	2.9	2.5		258.0	258.5	0.5
Lot No. 3049-6 #237-242								
<i>✓ - A-10</i> Tr composite					.19	356.2	378.0	
Lot No. 3052-25 #403								
<i>✓ - A-19</i>	.72	.72	Tr	1.8		278.8	280.8	2.0

ASSAYER

Geo. Spalding

Received - July 28/66 by phone from Spalding

	<u>Ag</u>	<u>Ph</u>	<u>Zn</u>	
353 ✓	.94	2.7	5.1	A-16
354 ✓	1.28	3.1	3.6	
355 ✓	.28	1.7	3.1	

384 - .84 Ag.
369 - 1.04 Ag. } Returns.

399 ✓	.48	1.6	1.7	A-19		
400 ✓	.52	1.0	2.2	A-19		
401 ✓	.76	.2	1.2			
402 ✓	.40	TR	1.0			
403 ✓	.72	Return	1.8		#	Zn
404 ✓	.64	TR	.6		421 ✓	2.9
405 ✓	.32	TR	.3		22 ✓	6.9
406 ✓	.44	.5	1.5		23 ✓	2.5
407 ✓	.56	.7	1.7		25 ✓	1.1
408 ✓	1.12	2.2	1.7		26	1.2
409 ✓	.40	1.5	2.8		27	1.1

Re-running ³²⁷ 394 + 396 for Ag #343

414 ✓	1.32	3.1	4.6	A-20
15 ✓	1.04	2.2	2.7	
16 ✓	.84	1.5	2.4	
17 ✓	1.48	3.8	7.5	
18 ✓	.84	1.5	2.2	
419 ✓	.88	2.0	3.9	
420 ✓	.64	1.7	1.8 - sludge	

ASSAY CERTIFICATE

DATE Aug. 9, 1966

FILE NO. 3100-29 3032-70 (composites) WHITEHORSE ASSAY OFFICE

P.O. BOX 346. WHITEHORSE. YUKON

RECEIVED
AUG 11 1966

RECEIVED FROM Kerr Addison

Lot No. 3100-29

KERR ADDISON MINES LTD.
Per _____

SAMPLE NO.	GOLD OZ. PER TON	SILVER OZ. PER TON	Lead	Zinc	Copper			
A20	✓428	.68	1.3	Tr	231.5	236.3	4.8	
	✓429	.08	.1	Tr	236.3	240.0	3.7	
	✓430	.26	Tr	Tr	240.0	244.0	4.0	
	✓431	.16	Tr	.4	244.0	254.0	10.0	
	✓432	.24	Tr	.1	254.0	256.7	2.7	
	✓433	.52	Tr	1.0	276.5	279.7	3.2	
	✓434	.34 Rerun	1.0	2.7	279.7	283.6	3.9	
	✓435	.08	Tr	Tr	283.6	286.0	2.4	
	✓436	.80	Tr	.4	286.0	289.3	3.3	
	✓437	1.12	1.2	1.7	289.3	295.3	6.0	
	✓438	.88	.3	1.2	295.3	298.5	3.2	
	✓439	1.44	2.8	6.6	328.6	333.5	4.9	
	✓440	.82	2.3	2.8	333.5	337.0	3.5	
	✓441	.80	1.7	5.2	337.0	342.0	5.0	
	✓442	.86	2.1	2.8	342.0	347.0	5.0	
	✓443	.96	2.3	3.1	347.0	352.9	5.9	
	✓444	.16	.2	.7	352.9	355.5	2.6	
	✓445	.96	2.3	8.6	355.5	360.5	5.0	
	✓446	.80	1.3	3.1	360.5	366.8	6.3	
	✓447	.60	Tr	.1	366.8	371.5	4.7	
✓448	1.84	5.0	2.9	399.8	401.0	1.2		
A21	✓449	.52	.2	.6	398.7	401.3	2.4	
	✓450	.64	.4	1.7	401.3	405.0	3.7	
	✓451	.08	Tr	Tr	405.0	409.2	4.2	
	✓452	.52	Tr	1.0	409.2	412.0	2.8	
	✓453	.72	2.2	3.6	412.0	417.3	5.3	
	✓454	1.28	1.9	3.1	417.3	421.9	4.6	
	✓455	1.52	3.3	3.9	421.9	426.6	4.7	
	✓456	.66	1.4	1.9	426.6	430.2	3.4	
Lot No. 3032-70 (Composites)								
A-18 326-327	.01				.15	465.0	483.0	18.0
A-19 338-349	.01				.48	430		
A-16 352-354	.01				.07	452.7	464.5	
A-19 373-378	.01				.01			

ASSAYER Geo. Spalding

DATE Aug. 16, 1966
 FILE NO. 5150-18

ASSAY CERTIFICATE

WHITEHORSE ASSAY OFFICE

P.O. BOX 346. WHITEHORSE. YUKON

RECEIVED FROM Kerr Addison Mines

RECEIVED
 AUG 18 1966

KERR ADDISON MINES LTD.

A 14 SLUDGE

A 25

SAMPLE NO.	GOLD OZ. PER TON	SILVER OZ PER TON	Lead	Zinc				
457	.34	.4	.1	479.0	485.0	6.0		
458	.70	Tr	.1	117.0	126.5	9.5		
459	.40	Tr	.1	126.5	135.0	8.5		
460	.56	Tr	.5	135.0	145.0	10.0		
461	.16	Tr	.5	145.0	155.0	10.0		
462	.30	Tr	1.1	155.0	166.7	11.7		
463	1.24	3.9	3.1	166.7	171.7	5.0		
464	.92	1.8	1.3	171.7	176.0	4.3		
465	2.82	2.7	2.1	176.0	179.2	3.2		
466	1.80	3.0	4.2	179.2	184.2	5.0		
467	1.80	4.3	5.4	184.2	188.0	3.8		
468	.72	.6	.1	188.0	193.8	5.8		
469	1.32	3.0	1.4	193.8	198.0	4.2		
470	.66	1.3	Tr	198.0	203.0	5.0		
471	.16	Tr	Tr	203.0	208.0	5.0		

ASSAYER

Geo. Spalding

DATE Aug. 19, 1966
 FILE NO. 3139-27

ASSAY CERTIFICATE

WHITEHORSE ASSAY OFFICE

P.O. BOX 346. WHITEHORSE. YUKON

RECEIVED FROM Kerr Addison

RECEIVED
 AUG 22 1966

KERR ADDISON MINES LTD.
 Per.....

SAMPLE NO.	GOLD OZ. PER TON	SILVER OZ. PER TON	Lead	Zinc			
472	.50	2.2	3.2	2.5	208.0	210.7	2.7
473		.80	.3	1.2	210.7	215.7	5.0
474		.20	.4	1.5	215.7	219.9	4.2
475		1.02	2.6	1.6	233.0	236.8	3.8
476		2.96	5.6	7.6	298.2	299.7	1.5
477		.52	.4	1.1	318.0	322.7	4.7
478		.64	2.2	2.6	322.7	327.6	4.9
479		.80	.4	1.1	327.6	329.6	2.0
480		.84	2.8	3.2	329.6	335.0	5.4
481		.36	.2	.7	335.0	345.0	10.0
482		.66	.3	Tr	345.0	351.1	6.1
483		.40	.6	.7	351.1	357.1	6.0
484		.52	.4	.1	357.1	361.6	3.9
485		.48	.5	.1	361.6	366.0	5.0
486		.64	.4	Tr	63.7	73.7	10.0
487		.64	.7	Tr	73.7	83.5	9.8
488		.44	.2	.5	83.5	90.0	6.5
489		.84	2.4	1.9	90.0	96.0	6.0
490		.64	1.2	1.1	96.0	102.0	6.0
501	Sludge	.70	5.2	2.3	125.0	135.0	10.0
502	"	1.76	4.6	6.0	135.0	155.0	20.0
503	"	1.68	5.1	4.9	155.0	160.0	5.0
504	"	1.80	4.5	5.1	160.0	165.0	5.0
505	"	1.40	3.4	5.1	165.0	170.0	5.0
506	"	1.16	3.8	2.4	170.0	175.0	5.0
507	"	1.56	3.7	4.2	175.0	180.0	5.0
508	"	1.48	2.1	3.1	185.0	189.5	4.5
Lot No 3100-29 Rerun #434		.34	1.0	2.7	279.7	283.6	3.9

A25

DDH-A-24

A23
125-190

ASSAYER Geo. Spalding

DATE Aug. 26, 1966
 FILE NO. 3183-35

ASSAY CERTIFICATE

WHITEHORSE ASSAY OFFICE

P.O. BOX 346. WHITEHORSE. YUKON

RECEIVED FROM Kerr Addison

SAMPLE NO.	GOLD OZ. PER TON	SILVER OZ. PER TON	Lead	Zinc			
<i>A-24</i>							
491		.96	2.3	2.5	103.0	117.8	5.8
492		1.36	2.6	1.4	107.8	122.8	5.0
493		1.08	2.1	2.9	117.8	122.8	5.0
494		.84	.6	2.2	117.8	122.8	5.0
495		.56	1.3	2.1	122.8	127.0	4.2
496		.36	.6	2.5	127.0	132.0	5.0
497		.32	1.2	2.7	132.0	137.0	5.0
498		.60	1.2	2.6	137.0	142.0	5.0
499		.64	1.1	1.4	142.0	147.5	5.5
<i>A-24</i>		.64	.6	.1	147.5	151.7	4.2
500					151.7	156.6	4.9
509		1.28	2.3	2.4	156.6	162.6	6.0
510		1.20	2.6	2.5	162.6	168.6	6.0
511		1.96	3.3	5.4	168.6	173.6	5.0
512		2.16	4.9	6.3	173.6	178.6	5.0
513		2.08	5.6	3.9	178.6	182.4	3.8
514		1.16	2.5	2.3	182.4	187.4	5.0
515		2.20	4.0	6.1	187.4	192.4	5.0
516		2.08	3.3	5.5	192.4	196.7	4.3
517		2.88	4.9	8.3	196.7	200.5	3.8
518		1.24	3.5	5.5	200.5	205.5	3.8
<i>A-23</i>		.80	1.3	2.1	205.5	208.6	4.6
519					274.0	278.6	4.6
520		Too small	2.4	3.1	156.0	160.0	4.0
521		10.1	34.2	10.0	160.0	164.0	4.0
522		.96	1.2	1.3	171.0	180.0	9.0
523		Too small	to run 8.6	7.7	182.0	189.0	7.0
<i>A-24</i>		2.56	8.0	8.3	189.0	189.5	0.5
524					125.0	130.0	5.0
525	<i>Sludge</i>	.68	1.4	2.6	132.0	142.0	10.0
526	<i>"</i>	.68	.7	2.1	142.0	150.0	8.0
527	<i>sludge</i>	.80	.4	1.0	150.0	155.0	5.0
528	<i>"</i>	.80	1.5	1.4	155.0	160.0	5.0
529	<i>"</i>	1.32	2.4	2.4	160.0	173.0	13.0
<i>A-23</i>		1.64	3.1	4.5	190.0	195.0	5.0
530	<i>"</i>	1.64	4.1	4.5	195.0	200.0	5.0
531	<i>"</i>	1.32	2.4	2.5	180.0	185.0	5.0
532	<i>"</i>	1.60	3.2	3.9			
533	<i>"</i>						

RECEIVED
 AUG 29 1966
 KERR ADDISON MINES LTD.

Nos. 520, 523 too small to run for Silver

ASSAYER Geo. Spalding

DATE Sept. 12, 1966
 FILE NO. 3225-6

ASSAY CERTIFICATE

WHITEHORSE ASSAY OFFICE

P.O. BOX 346. WHITEHORSE. YUKON

RECEIVED
 SEP 13 1966

RECEIVED FROM Kerr Addison

KERR ADDISON MINES LTD.

SAMPLE NO.	GOLD OZ. PER TON	SILVER OZ PER TON	Lead	Zinc	Copper			
<u>A-26</u> 534		.50	1.6	2.4		220.8	222.8	2.0
<u>A-29</u> 535		Rerun ⁸⁴	5.7	4.1		130.5	135.5	5.0
536	*	1.42	8.1	5.3		135.5	141.5	6.0
537		.74	2.7	1.9		141.5	148.5	7.0
538		1.36	4.8	2.3		148.5	155.5	7.0
539		1.78	5.5	3.0		155.5	162.5	7.0
Composites						Should be rerun for Ag.		
3032-70 #335-340 & A-19 348-349	.005				.30			
3039-27 #501-508 & A-23 532-533	.005				.27			
3130-16 #466-467 A-25	.005				.34			
3183-35 #509-518 A-24	.005				.16			
3100-29 #453-455 A-21	.01				.15			
3152-25 #417-419 & A-20 421-423	Tr				.15			
3100-29 #439-445 A-20	.005				.12			
3100-29 #445 A-20	.005				.03			

ASSAYER

Geo. Spalding

DATE Sept. 23, 1966FILE NO. 3225-6

ASSAY CERTIFICATE

RECEIVED
SEP 26 1966

WHITEHORSE ASSAY OFFICE

P.O. BOX 346. WHITEHORSE. YUKON

RECEIVED FROM

Kerr Addison

KERR ADDISON

MINES LTD.

SAMPLE NO.	GOLD OZ. PER TON	SILVER OZ PER TON	Lead	Zinc	Per...		
<i>A 28</i>							
<i>SLUDGE</i>							
<i>165-173 540</i>		<i>.86</i>	<i>1.3</i>	<i>1.2</i>			
<i>173-180 541</i>		<i>.60</i>	<i>.7</i>	<i>.1</i>			
<i>180-185 542</i>		<i>1.20</i>	<i>2.2</i>	<i>2.3</i>	<i>4.5</i>		
<i>185-190 543</i>		<i>.62</i>	<i>1.2</i>	<i>.7</i>			
<i>190-195 544</i>		<i>.64</i>	<i>.7</i>	<i>1.0</i>			
<i>195-200 545</i>		<i>.50</i>	<i>.3</i>	<i>.4</i>			
<i>200-205 546</i>		<i>1.32</i>	<i>2.6</i>	<i>2.4</i>	<i>5.0</i>		
<i>205-210 547</i>		<i>.44</i>	<i>.5</i>	<i>.1</i>			
<i>210-215 548</i>		<i>1.68</i>	<i>3.9</i>	<i>4.1</i>	<i>8.0</i>		
<i>215-217 549</i>		<i>2.84</i>	<i>6.8</i>	<i>8.9</i>	<i>15.7</i>		
<i>Lot No. 3225-6 Rerun # 535</i>		<i>.84</i>	<i>5.7</i>	<i>4.1</i>			

*Should be re-run by different
lab U.S.*

ASSAYER

Geo. Spalding

DATE Sept. 30, 1966
 FILE NO. 3320-40

ASSAY CERTIFICATE

WHITEHORSE ASSAY OFFICE

P.O. BOX 346. WHITEHORSE. YUKON

RECEIVED FROM Kerr Addison

SAMPLE NO.	GOLD OZ. PER TON	SILVER OZ. PER TON	Lead	Zinc				
A-28	550	1.04	1.1	2.1	402.7	405.3		
	551	.34	.4	1.2	455.0	461.6		
	552	.62	2.1	6.0	461.6 - 491.0			
	553	.62	1.7	3.1				
	554	.56	.7	2.0				
	555	.50	.3	.1				
	556	.58	1.9	2.6				
	557	.22	.1	Tr				
A-29	558	1.48	4.3	2.5	162.5 - 181.0			
	559	1.64	5.3	5.7				
	560	1.04	3.9	3.6				
	561	1.40	3.8	3.6				
	562	1.28	3.3	4.1				
	563	1.76	4.0	3.4				
	564	2.76	6.8	12.6				
	565	1.96	3.2	5.5				
	566	1.84	3.2	5.1				
	567	1.48	3.2	5.4				
	568	.52	.3	.1				
	569	.28	.2	.1				
	570	.52	.1	.1				
	571	.28	Tr	Tr				
	572	1.10	2.4	2.2				
	573	.54	1.5	1.0				
	574	.30	.6	Tr				
	575	.30	1.3	1.4				
576	.80	1.5	1.2	379.8 - 385.0				
577	1.00	3.4	8.1	433.2 - 445				
578	.42	.5	.7					
579	2.06	3.7	5.1	466.0 - 476.0				
580	2.08	4.7	7.6					
A-28	581	2.76	5.8	19.9	SLUDGE - 217.0 - 236.0			
	582	1.58	4.1	6.8				
	583	.50	.7	1.5	300.0 - 305.0			
	584	.26	.3	.1	SLUDGE - 300 - 45.0			
	585	.96	.3	1.1				
A-30	586	.54	.4	1.1				
	587	.36	.2	.1	52.0 - 57.0 SLUDGE			
	588	.32	.2	.1	60.0 - 65.0 - SLUDGE			
	589	.36	Tr	Tr	252.0 - 257.0 - SLUDGE			

ASSAYER Geo. Spalding

DATE Oct. 13, 1966
 FILE NO. 3351-84

ASSAY CERTIFICATE

WHITEHORSE ASSAY OFFICE

P.O. BOX 346. WHITEHORSE. YUKON

RECEIVED FROM Kerr Addison

RECEIVED
 OCT 17 1966

KERR ADDISON MINES LTD.

SAMPLE NO.	GOLD OZ. PER TON	SILVER OZ. PER TON	Lead	Zinc	
A-28 - 590		1.32	3.9	4.8	173-174 178.5-181 181.0-195.0 195.0-257.3 2 ↓
591		1.08	2.4	2.7	
592		.06	.4	.1	
593		Tr	.2	Tr	
594		.36	1.3	.4	
595		1.28	2.1	2.6	
596		1.72	4.2	6.8	
597		.44	1.3	1.2	
598		1.84	3.4	5.1	
599		1.84	2.3	2.5	
600		1.00	1.1	2.1	257.3-260.0 181.0-205.0 385.0-397.5 30.0-57.5 91.5-219.5
601		1.68	1.7	2.7	
602		.96	1.7	.1	
603		.30	Tr	.4	
A-29 - 604		.88	2.0	3.2	
605		.72	2.0	2.7	
606		.52	Tr	1.7	
607		.46	1.6	2.7	
608		.16	Tr	Tr	
A-30 - 609		.48	.3	1.8	
610		1.12 Run	1.1	1.2	
611		.84	1.2	3.0	
612		.80	.4	2.1	
613		Tr	.3	1.9	
614		.28	.3	Tr	
615		.08	.1	.1	
616		.38	.2	1.2	
617		Tr	Tr	Tr	
618		.08	.3	.6	
619		.24	.2	1.7	
620 & 621		.32	.3	.7	
622		.20	.3	Tr	
623		.44	Tr	Tr	
624		.02	.1	Tr	
625		.08	.3	Tr	
626		.08	Tr	.5	
627		.56	2.2	2.8	
628		.32	.3	1.3	
629		.22	.2	.7	
630		.08	Tr	1.1	
631		.20	Tr	Tr	
632		.14	.2	.5	
633		.12	.1	Tr	
634		.20	Tr	Tr	
635		.22	Tr	.3	
636		.14	Tr	Tr	
637		.56	1.1	2.1	
638		.68	1.2	2.6	

ASSAYER Geo. Spalding

DATE Oct. 13, 1966
 FILE NO. 3351-84 Cont'd

ASSAY CERTIFICATE

WHITEHORSE ASSAY OFFICE
 P.O. BOX 346, WHITEHORSE, YUKON

RECEIVED
 OCT 17 1966

RECEIVED FROM Kerr Addison

SAMPLE NO.	GOLD OZ. PER TON	SILVER OZ. PER TON	Lead	Zinc	KERR ADDISON	MINES LTD.
					Per.....	
A-30 639		.68	.5	1.7	401.0 - 483.0	
640		1.68	6.2	8.1		
641		1.72	7.0	8.8		
642		1.28	4.1	5.4		
643		1.48	3.2	3.1		
644		1.28	3.0	3.0		
645		1.36	3.2	5.9		
646		1.24	2.1	2.5		
647		.62	1.3	1.1		
648		.56	Tr	.1		
649		.36	.2	Tr		
650		1.40	6.5	3.9		
651		1.36	5.0	4.6		
652		.80	1.9	4.0		
653		1.16	3.6	5.4		
654		1.16	3.6	5.0		
655		1.24	3.3	3.2	497.0 - 518.0	
656		Tr	.1	Tr		
657		.48	.1	Tr	136.5 - 224.0	
A-31 658		.76	1.9	.7		
660		1.44	3.5	3.5		
661		1.12	3.2	3.7		
662		1.28	3.3	4.6		
664		1.00	1.9	2.1		
665		1.52	2.5	2.9		
666		1.80	3.8	5.0		
667		1.04	2.5	2.7		
668		1.88	3.6	5.0		170 - 195
669		1.80	3.2	5.4		
670		.60	1.6	2.0		
671		.18	Tr	.1		
672		.36	2.0	2.9		
673		.48	1.9	3.1		
674		.34	2.0	2.5		
A-31 } 659		1.44	2.8	3.1	140.0 - 145.0	
* 663		1.04	1.6	1.1	160.0 - 165.0	

ASSAYER Geo. Spalding

DATE Oct. 13, 1966
 FILE NO. 3358-14
3375-29

ASSAY CERTIFICATE

WHITEHORSE ASSAY OFFICE
 P.O. BOX 346. WHITEHORSE. YUKON

RECEIVED
 OCT 17 1966

RECEIVED FROM Kerr Addison

SAMPLE NO.	GOLD		SILVER		Lead	Zinc	KERR ADDISON Per.....	MINES LTD.	
	OZ. PER TON	OZ. PER TON	OZ. PER TON	OZ. PER TON					
<i>A-31</i> - 675			1.00		Tr	2.5	} 224.0 - 293.3		
676			1.28		1.8	2.4			
677			1.72		3.0	5.4			
678			1.80		3.3	6.1			
679			.92		1.6	2.2			
680			.96		.4	.7			
681			.24		.4	.7			
682			.12		.2	Tr			
683			.24		.2	Tr			
684			.30		.2	.1			
685			.36		.2	.7			
686			.60		.2	.1			
687			.24		.1	Tr			
688			.50		1.1	Tr		- 323.5 - 329.0	
<i>A-33</i> 689			Tr		.1	Tr		} 194.0 - 233.0	
690			1.00		.4	.4			
691			1.40		5.5	5.8			
692			2.12		5.9	8.0			
693			.68		.2	Tr			
694			.76		1.4	1.3			
695			.96		.3	1.0			
696			.72		.7	1.8			
697			.56		.4	1.0	358.5 - 365.5		
698			.34		.2	Tr	365.5 - 370.6		
699			1.20		2.0	3.9	419.2 - 492.4		
700			<i>28</i> Re-run		Tr	Tr			
701			.80		1.8	3.3			
702			1.44		2.8	5.5			
703			.80		1.3	1.4			
704			1.24		2.0	2.7			
705			.56		Tr	Tr			
706			Tr		Tr	.3			
707			.48		Tr	Tr			
708			.52		.3	Tr			
709			.64		.6	1.6			
<i>A-35</i> - 710			.24		Tr	Tr	} 225.5 - 253.0		
711			.60		2.2	.7			
712			1.56		2.7	2.3			
713			1.68		3.7	3.4			
714			1.04		2.7	3.3			
715			1.64		3.6	7.0		312.0 - 314.3	
716			.80		.3	Tr		} 363.0 - 381.0	
717			.60		.1	Tr			

ASSAYER Geo. Spalding

DATE Oct. 13, 1966
 FILE NO. 3383-14

ASSAY CERTIFICATE

WHITEHORSE ASSAY OFFICE
 P.O. BOX 346. WHITEHORSE. YUKON

*Rec'd
 Oct 17/66*

RECEIVED FROM Kerr Addison

SAMPLE NO.	GOLD OZ. PER TON	SILVER OZ PER TON	Lead	Zinc			
<i>A-35</i> 718		1.24	.3	.1	}	381.0 - 426.0	
719		1.36	.5	Tr			
720		.88	.1	Tr			
721		1.04	4.5	4.4			
722		1.44	3.0	3.7			
723		1.16	3.0	4.0	}	455.0 - 478.0	
724		.68	1.7	2.0			
725		.26	1.8	3.0			
726		.34	1.4	.7			
727		.42	2.1	4.2			
728		.32	2.0	2.4			
729		Tr	.7	2.0			
<i>A-34</i> 730		.58	.5	1.3	}	106.5 - 124.0	
731		.52	.6	.4			

ASSAYER Geo. Spalding

DATE Oct. 19, 1966
 FILE NO. 3395-32
3408-8

ASSAY CERTIFICATE

WHITEHORSE ASSAY OFFICE
 P.O. BOX 346. WHITEHORSE. YUKON

RECEIVED FROM Kerr Addison

SAMPLE NO.	GOLD OZ. PER TON	SILVER OZ. PER TON	Lead	Zinc	
Lot No. 3395-32			1.6		
A-37 732/		.82	Rerun	Tr	113.0
733/		1.24	1.1	Tr	
734/		1.12	.4	Tr	
735/		1.24	.5	Tr	
736/		1.04	.6	Tr	
737/		1.04	.4	Tr	
738/		1.20	.7	1.0	
739/		.70	.3	.1	
740/		.78	1.1	2.2	105.0 115.0
741/		.32	Tr	Tr	
742/		.88	.5	1.0	
743/		.08	Tr	Tr	113.0 - 122.5 - SLUDGES
33 744/		.48	.1	Tr	
A-35 745/		.14	Tr	Tr	137.0 - 143.0 - 6.0
746/		.14	.1	Tr	
747/		Tr	Tr	Tr	194.0 - 230.0 SLUDGES
748/		.34	.1	Tr	
749/		1.16	.1	Tr	
750/		1.04	1.2	Tr	
751/		1.08	.3	Tr	
A-34 752/		.52	.1	Tr	239.0 - 253.0 - SLUDGE
A-35 753/		.38	Tr	Tr	267.0 - 303.0 - SLUDGE
754/		.38	.1	Tr	
755/		.24	.3	Tr	
756/		.42		Tr	
757/		.40	.3	Tr	
758/		.48	.6	1.6	307.0 - 312.0 - SLUDGE
759/		1.08	1.4	1.1	381.0 - 426.0 - SLUDGE
A-35 761/		.24	.1	Tr	456.0 - 452.0 - "
762/		.76	.4	.4	458.0 - 478.0 - "
763/		Tr	.1	Tr	478.0 - 497.0 - "
764/		.32	.2	Tr	497.0 - 510.0 - "
Number 756 too small for lead to be run					
A-37 Lot No. 3408-8	760/	5.0	1.12	1.5	2.7
	765/	5.0	1.04	1.7	1.1
	766/	5.0	1.76	1.8	4.1
	767/	5.0	1.92	5.7	4.8
	768/	5.0	1.96	4.2	3.4
	769/	5.0	1.72	3.6	3.3
	770/	5.0	2.24	5.7	3.8
	771/	4.5	1.84	3.8	2.0
Lot No. 3375-29 Rerun	A-33 14700	.28			
Lot No. 3351-85 Rerun	A-30 #600	1.12			

RECEIVED
 KERR ADDISON
 MINES LTD.

SLUDGES
massive pyrite
 105.0 115.0
 113.0 - 122.5 - SLUDGES
 137.0 - 143.0 - 6.0
 194.0 - 230.0 SLUDGES
 239.0 - 253.0 - SLUDGE
 267.0 - 303.0 - SLUDGE
 307.0 - 312.0 - SLUDGE
 381.0 - 426.0 - SLUDGE
 456.0 - 452.0 - "
 458.0 - 478.0 - "
 478.0 - 497.0 - "
 497.0 - 510.0 - "

ASSAYER Geo. Spalding



Telecommunications

send this message subject to the terms on back
dépêche à expédier aux conditions énoncées au verso

To: Whitehorse Assay Office,
Attention: Mr. George Spalding,
Whitehorse, Y. T.

Re samples 733 - 738 and 749 - 751, our prime concern was the base metal content rather than the silver. Would you please check 733 and 751 for lead-zinc.

rec'd

W. M. Sirola.

FULL RATE.

check mots	full rate plein tarif	day letter lettre de jour	night letter lettre de nuit	tolls coût
charge account no. numéro du compte	cash number numéro de caisse			
sender's name for reference only nom de l'expéditeur pour référence seulement				
address and telephone adresse, téléphone				

DATE Oct. 31, 1966
 FILE NO. 3395-32 Reruns

ASSAY CERTIFICATE

NOV 3 1966

WHITEHORSE ASSAY OFFICE

P.O. BOX 346. WHITEHORSE. YUKON

RECEIVED FROM Kerr Addison

RECEIVED
 NOV 1 1966

KERR ADDISON MINES LTD.

K.C.G.
 J.H.S.
 P.D.S.
 E.C.B.
 P.M.K.
 G.W.M.
 R.O.M.
 C.K.W.
 J.B.S.
 G.P.R.
 K.F.L.
 L.L.B.
 E.C.J.

SAMPLE NO.	GOLD OZ. PER TON	SILVER OZ PER TON					
A-37 733 ✓	Sludge	1.76	78.0	83.0	5.0		
" 734 ✓	"	1.12	83.0	88.0	5.0		
" 735 ✓	"	1.24	88.0	93.0	5.0		
" 736 ✓	"	1.04	93.0	98.0	5.0		
" 737 ✓	"	.96	98.0	103.0	5.0		
" 738 ✓	"	1.80	103.0	108.0	5.0		
A-33 749 ✓		1.20	214.0	217.0	3.0		
" 750 ✓		1.04	217.0	224.0	7.0		
" 751 ✓		1.08	224.0	230.0	6.0		

ASSAYER Geo. Spalding

DATE Nov. 3, 1966
 FILE NO. 3395-32 Checks

ASSAY CERTIFICATE

WHITEHORSE ASSAY OFFICE
 P.O. BOX 346. WHITEHORSE. YUKON

RECEIVED
 NOV 7 1966

RECEIVED FROM Kerr Addison

SAMPLE NO.	GOLD OZ. PER TON	SILVER OZ PER TON	Lead	Zinc		KERR ADDISON	MINES LTD.
A-37	733 ✓		1.0	Tr	78.0	83.0	5.0
A-33	751 ✓		.2	.2	224.0	230.0	6.0

ASSAYER Geo. Spalding

DATE Nov. 16, 1966
 FILE NO. Reruns

ASSAY CERTIFICATE

WHITEHORSE ASSAY OFFICE
 P.O. BOX 346. WHITEHORSE. YUKON

RECEIVED
 NOV 17 1966

RECEIVED FROM Kerr Addison

SAMPLE NO.	GOLD OZ. PER TON	SILVER OZ PER TON				KERR ADDISON		MINES LTD.
						Per.....		
A-9	148 ✓	1.40		443.5	445.0	1.5		
A-10	233 ✓	.70		98.0	102.6	4.6		

ASSAYER

Geo. Spalding

DATE Aug. 5, 1966
 FILE NO. 3070-4

ASSAY CERTIFICATE

WHITEHORSE ASSAY OFFICE

P.O. BOX 346. WHITEHORSE. YUKON

RECEIVED FROM **Kerr Addison**

SAMPLE NO.	GOLD OZ. PER TON	SILVER OZ PER TON	Lead		Zinc		FROM	TO	SAMPLE LENGTH
<i>A-20</i>							170.6	173.9	3.6
✓421		.92	1.7	2.9					
✓422	173.9-182.0	2.28	5.5	6.9					
✓423		.88	1.2	3.3			173.9	182.0	8.1
✓424		.60	1.4	2.5			187.0	190.0	5.0
✓425		.26	.1	.1			187.0	190.0	3.6
✓426		.72	Tr	1.2			190.6	192.2	1.6
✓427		.52	Tr	1.1			317.3	322.3	5.0
							322.3	324.8	2.5

RECEIVED
 AUG 8 1966

KERR ADDISON

Per

ASSAYER

Geo. Speedy

KERR ADDISON MINES LIMITED
44 KING STREET WEST
TORONTO 1, ONTARIO

RECEIVED
NOV 29 1966

COPY

KERR ADDISON MINES LTD.

Pat.

November 28th, 1966.

Mr. G. Spalding,
Whitehorse Assay Office,
Box 346,
Whitehorse, Y.T.

Dear George:

Would you please run the following samples for copper and gold:

- 1) a composite sample of 535, 536, 537, 538, 539, 558, 559, 560, 561, 604.
- 2) a composite sample of 562 to 567 inclusive.
- 3) sample 577.
- 4) sample 579.
- 5) a composite sample of 640 to 646 inclusive.
- 6) a composite sample of 650 to 655 inclusive.
- 7) a composite sample of 546, 547, 548, 549, 580, 581, 582, 599, 600, 601.
- 8) sample 552.
- 9) a composite sample of 659 to 662 inclusive.
- 10) a composite sample of 666 to 669 inclusive.
- 11) a composite sample of 677 and 678.
- 12) a composite sample of 691 and 692.
- 13) sample 702.
- 14) a composite sample of 749 to 751 inclusive.
- 15) a composite sample of 712 to 714 inclusive.
- 16) sample 715.
- 17) a composite sample of 721 to 723 inclusive.
- 18) a composite sample of 733 to 739 inclusive.
- 19) a composite sample of 766 to 771 inclusive.

Please forward one copy of the assay results and your bill directly to me, and two copies of the assay results to Bill Sirola in Vancouver.

Best Regards,

Yours sincerely,



Paul M. Kavanagh
Chief Geologist - Exploration.

PMK:sw

cc: W. M. Sirola
F. Chow.

DATE Dec 3rd 1966

FILE NO. Composites

ASSAY CERTIFICATE

WHITEHORSE ASSAY OFFICE

P.O. BOX 346. WHITEHORSE. YUKON

RECEIVED FROM Ker-Addison Mines Ltd.,

RECEIVED
DEC 6 1966

KERR ADDISON MINES LTD.

Per.....

COMPOSITE OF SAMPLE No's

SAMPLE NO.	GOLD OZ. PER TON	SILVER OZ. PER TON	Copper	
A-29 = 1 ✓	Trace		.12	535 to 539 incl + 558-561 incl + 604
A-29 2 ✓	.005		.13	562-567 incl
A-29 3 ✓	Trace		.16	577
A-29 4 ✓	"		.01	579
A-30 5 ✓	.005		.13	640-646 incl.
A-30 6 ✓	.005		.15	650-655 incl.
A-28 = 7 ✓	.005		.15	546-549 incl + 580-582 incl + 579-601 incl
A-28 8 ✓	.01		.01	552
A-31 9 ✓	.005		.28	659-662 incl.
A-31 10 ✓	.005		.27	666-669 incl
A-31 11 ✓	.01		.15	677-678 incl
A-33 12 ✓	Trace		.01	691 + 692
A-33 13 ✓	"		.15	702
A-33 14 ✓	"		.18	749-751 incl
A-35 15 ✓	"		.42	712-714 incl
A-35 16 ✓	Trace		Trace	715
A-35 17 ✓	"		.18	721-723 incl
A-37 18 ✓	"		.28	733-739 incl
A-37 19 ✓	"		.28	766-771 incl.

ASSAYER

Geo. Spadung

SWIM

KERR ADDISON MINES LIMITED
44 KING STREET WEST
TORONTO 1, ONTARIO

RECEIVED
OCT 12 1967

COPY

KERR ADDISON MINES LTD.

October 10th, 1967.

Mr. Richard O. Huch,
The Galigher Company,
545-585 West Eighth South Street,
Salt Lake City, Utah,
U. S. A.

Dear Mr. Huch:

Thank you for your letter of September 28th, 1967.

Today we are forwarding to you via air express from our Vancouver office one 50 lb. plus sample of split core from our Swim Lakes deposit.

This week we will be forwarding to you via air express from our Toronto office one 45 lb. sample of crushed core from our Vangorda deposit.

We estimate that both samples grade 8-10% combined lead-zinc.

We wish that you would carry out preliminary metallurgical tests on each of the samples separately and at your earliest convenience.

Yours sincerely,



Paul M. Kavanagh
Vice-President - Exploration.

PMK:sw

cc: W. M. Siroda. ✓

SIROLA
NOV 18 1967

THE GALIGHER COMPANY

ESTABLISHED 1901



CABLE ADDRESS
GALSAL

545-585 WEST EIGHTH SOUTH STREET
P. O. BOX 209
SALT LAKE CITY, UTAH, 84110
U.S.A.

TELEPHONE
359-8731
AREA CODE 801

W.S.R.
K.C.G.
J.H.S.
E.F.
R.D.S.
B.C.B.
P.M.K.
G.W.M.
R.O.M.
C.K.W.
J.B.S.
G.P.R.
K.F.L.
J.I.B.
E.C.J.

New York
New York

November 10, 1967

Mr. Paul M. Kavanagh
Vice President - Exploration
Kerr Addison Mines Limited
Suite 1600-44 King Street West
Toronto 1, Ontario
Canada

Dear Mr. Kavanagh:

Pursuant to our letter of November 1, we have now uncovered some difficulties in the lead assaying of the ore samples and various test products. Our Assayer (the Union Assay Office) has checked three different methods of analysis, and he turns up three different answers, these being as follows:

		<u>% Pb</u>	
Head, Lot No. 1759-A - <i>Vanguard</i>	1.4	2.55	4.0
Head, Lot No. 1759-B - <i>Swain Lake</i>	2.1	3.85	4.55

In view of the apparent difficulty in obtaining accurate lead analyses on these samples, we were wondering if such problems were encountered in the Noranda Laboratory regarding the assaying. Presumably, a satisfactory lead assaying procedure was used during the Noranda investigation, and we request that the details of this procedure be sent to us so that it can be forwarded to the Union Assay Office.

We will plan to hold in abeyance further testing of these samples until we receive your comments.

Sincerely yours,

THE GALIGHER COMPANY

R. O. Huch
R. O. Huch,
Metallurgist

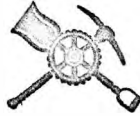
ROH:gc

LEADERS IN EXPERIENCE AND SERVICE

AIR
MAIL

THE GALIGHER COMPANY

ESTABLISHED 1901



CABLE ADDRESS
GALSAL

545-585 WEST EIGHTH SOUTH STREET
P. O. BOX 209

SALT LAKE CITY, UTAH, 84110
U. S. A.

TELEPHONE
359-8731

AREA CODE 801

November 24, 1967

Mr. Jack Gillies
c/o Noranda Mines Ltd.
Rouyn - Noranda
P.Q., Canada

Dear Mr. Gillies:

Pursuant to our telephone conversation of the other day, and subsequent confirmation by Dr. Kavanagh, we are sending to you today 15 samples of test products for lead and zinc assays, these samples being sent by air mail.

After you have completed your analyses of these test products, we would appreciate receiving the results of same so that the results of the tests can be evaluated.

Sincerely yours,

THE GALIGHER COMPANY

R. O. Huck

R. O. Huck
Metallurgist

ROH/do

cc: Dr. P. M. Kavanagh

Copy sent to Sirota

NORANDA MINES LIMITED

ASSAY REPORT

GALIGHER CO.

KERR ADDISON

NORANDA, QUE. Dec 8/67

✓

PRODUCT	DATE	Au	Ag	Cu	SiO ₂	Fe	Pb	Zn	Ni	As	Al ₂ O ₃	S						
	SAMPLED	OZS/TON			%	%	%	%	%	%	%	%						
Head Sample	1759 A						3.93	5.05										
Head Sample	1759 B						4.13	4.96										
Pb Po Conc #3	1759 B	#31					3.92	6.65										
Pb Po Conc #3	1759 A	#40	✓				3.06	6.64										
Pb Po Conc #2	1759 B	#46					5.51	7.33										
Pb Po Conc #2	1759 A	#58	✓				4.67	7.57										
Zn Po Conc	1759 B	#148					1.27	20.20										
Pb Po Conc #1	1759 B	#168					20.95	7.68										
Pb Po Conc #1	1759 A	#172	✓				19.88	9.90										
Pb Po Conc	1759 A	#281	✓				13.18	8.70										
Pb Po Conc	1759 B	#300					12.20	7.20										
Zn Po Tail	1759 B	#608					.44	.51										
Pb Po Tail	1759 A	#732	✓				.51	3.80										
Pb Po Tail	1759 A	#773	✓				.55	3.93										
Pb Po Tail	1759 B	#765					.60	4.90										

copy sent to Sivola

[Handwritten signature]

Sirolo

NOV 3 1967

THE GALIGHER COMPANY

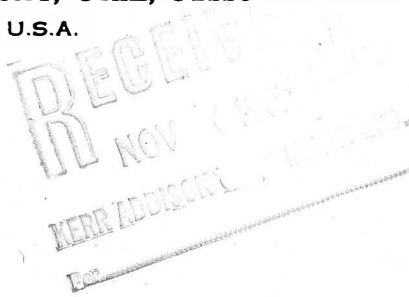
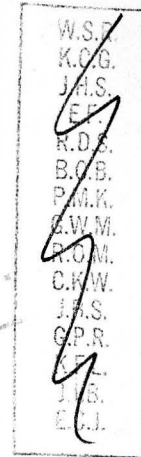
ESTABLISHED 1901



CABLE ADDRESS
GALSAL

545-585 WEST EIGHTH SOUTH STREET
P. O. BOX 209
SALT LAKE CITY, UTAH, 84110
U.S.A.

TELEPHONE
359-8731
AREA CODE 801



November 1, 1967

Mr. Paul M. Kavanagh
Vice President - Exploration
Kerr Addison Mines Ltd.
Suite 1600 - 44 King Street West
Toronto 1, Ontario
Canada

Dear Mr. Kavanagh:

We are pleased to inform you that the two ore samples have been received, as well as your letter of October 23rd with the microscopic report. It appears from the latter that the mineral associations are much more intimate in your ore samples and this, most likely, is the probable reason that the Noranda laboratory had difficulty in concentrating the lead and zinc. It will be interesting to see the response to our flowsheet.

Head samples were prepared from the two samples, these being submitted to the Union Assay Office of this city for analysis. They reported the following:

<u>Our Lot No.</u>	<u>Deposit</u>	<u>% Pb</u>	<u>% Zn</u>
1759-A	Vangorda	1.4	5.80
1759-B	Swim Lake	2.1	5.75

We have not, as yet, started the testing of these two samples, but hope to do so soon. As soon as indicative results are obtained, we will plan to contact you.

Sincerely yours,

THE GALIGHER COMPANY

R. O. Huch
R. O. Huch
Metallurgist

ROH/do

Bill: I intend to phone Galigher next week to see if they have made any progress Paul.

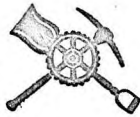
LEADERS IN EXPERIENCE AND SERVICE

AIR
MAIL

DEC 21 1967

THE GALIGHER COMPANY

ESTABLISHED 1901



CABLE ADDRESS
GALSAL

545-585 WEST EIGHTH SOUTH STREET
P. O. BOX 209

SALT LAKE CITY, UTAH, 84110
U. S. A.

RECEIVED
JAN 2 1968
KERR ADDISON
MINES LTD.
Per.....

TELEPHONE
359-8731

AREA CODE 801

W.S.R.
K.C.G.
J.H.S.
E.F.
R.D.S.
B.C.B.
J.A.K. ✓
G.W.M.
R.O.M.
O.K.W.
J.P.S.
G.P.R.
K.F.L.
H.P.
E.C.J.

December 21, 1967

Mr. Jack Gillies
c/o Noranda Mines Ltd.
Rouyn - Noranda
P.Q., Canada

Dear Mr. Gillies:

We thank you for your assay report dated December 8th. The assays check reasonably well as can be seen by the following:

	<u>% Pb</u>	<u>% Zn</u>
Head, Lot No. 1759-A (by Assay)	3.93	5.05
Head, Lot No. 1759-A (by Calculation)	4.18	5.12
Head, Lot No. 1759-B (by Assay)	4.13	4.96
Head, Lot No. 1759-B (by Calculation)	4.35	5.13

We are sending to you an additional suite of test samples for lead and zinc analyses and would appreciate your results as soon as they are available. Would you kindly specify in your sample identification the Lot No., Test No. and product? The numbers which we have written at the top of the sample envelopes are not identification numbers, but represent only the original test product weight.

Sincerely yours,

THE GALIGHER COMPANY

R. O. Huch
R. O. Huch
Metallurgist

ROH/do

cc: Dr. P. M. Kavanagh

copy to Sirola

COPY

P. M. Kavanagh

W. M. Sirola

Metallurgical Testing - Swim Lakes &
Vangorda Deposits

November 6, 1967.

Thank you for sending me the letter from Galigher regarding the impending test work.

I am a little concerned about the differences between the lead-zinc content of both deposits as reported by Galigher. Herewith a comparison of their assaying and that of Coast Eldridge:

	<u>Coast Eldridge</u>	<u>Galigher Co.</u>
Vangorda Split Core:	Pb - 3.04, Zn - 5.96	Pb - 1.4, Zn - 5.80

We cannot draw a direct comparison between Galigher's assay of Swim Lakes core which was 2.1 Pb and 5.75 Zn with our calculated grade of 3.5 Pb and 5.4 Zn but it seems to me that in both cases the ratios of lead to zinc are disproportionate in the Galigher assays.

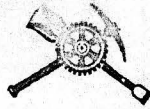
It is my suggestion that the Galigher people should have both samples reassayed, preferably at another lab.

W. M. Sirola.

WMS/lk

THE GALIGHER COMPANY

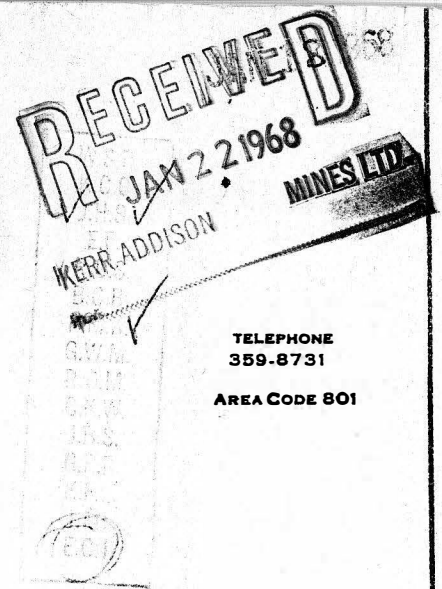
ESTABLISHED 1901



CABLE ADDRESS
GALSAL

545-585 WEST EIGHTH SOUTH STREET
P. O. BOX 209

SALT LAKE CITY, UTAH, 84110
U.S.A.



TELEPHONE
359-8731
AREA CODE 801

January 16, 1968

Dr. Paul M. Kavanagh
Vice President-Exploration
Kerr Addison Mines Limited
Suite 1600-44 King Street West
Toronto 1, Ontario
Canada

Dear Dr. Kavanagh:

We've received the last group of assays from Noranda, the calculated test results being shown on the attached Thermofax copies (Test Nos. 4, 5 and 6 for Lots 1759-A & B).

You will note from these results that there is very little difference in lead recovery over the range of grinds tested. Zinc rejection is improved by the finer grinding, but we are not too concerned about this at this stage of the testing. We are hoping that a substantial zinc rejection (and iron) from the lead will be obtained when the lead concentrate is reground and cleaned, this being the case in the Anvil testing. We should be able to get these tests going, perhaps, tomorrow.

Thank you for your Christmas card, and we all hope that you had a happy holiday season and will enjoy a fruitful '68.

Sincerely yours,

THE GALIGHER COMPANY

R. O. Huch
R. O. Huch
Metallurgist

ROH/do
Enclosures

copy to w.m. Sivala ✓

LEADERS IN EXPERIENCE AND SERVICE

AIR
MAIL

METALLURGICAL RESEARCH DEPT.

CABLE "GALVAL"

THE GALIGHER COMPANY

P. O. BOX 209 - 545 5th WEST 8th SOUTH STREET
SALT LAKE CITY, UTAH 84110 - U.S.A.

TELEPHONE 359-8731

OUR LOT NO. 1759-A
DATE 12-15-67
BY JK

TEST NO. 4 NAME Bar Chain
Ernest Series

PRODUCT	Weight	Percent Weight	ASSAY		DISTRIBUTION					
			Pb	Zn	Pb	Zn				
1st Pb conc	25.7	25.7	14.78	9.73	38.0	253.0	28.9	44.2		
2nd "	22.9	79.9	1.40	14.30	27.9	284.5	6.5	50.3		
3rd "	1.3	4.3	1.63	1.73	7.0	7.4	1.6	1.3		
4th Tls	50.1	50.1	0.26	0.47	13.0	22.5	3.0	4.2		
Head (Ch.)	100.8	100.0	4.28	5.65	427.9	565.4	100.0	100.0		
Pb to tail		74.3	0.65	4.25	47.9	315.4	11.1	55.8		

OPERATION	RM	Pb Co	Zn	Feed	Coor	Feed	Zn Co	Feed	Grind	GRINDING PRODUCT	
										MESH	%
TIME	12	3	5	5	3	5	5	3			
REAGENTS - LBS. / TON											
Time	4.0			4.0							
Wash	0.15										
R-304	2.0										
R-343		0.05	0.025								
MIBC		0.13	0.03								
Cu 204					1.8						
0.02					0.05			0.04			
MACHINE		1070									
R.P.M.		1750									
pH		8.9		12.1	12.1						
% SOLIDS	70										50.2
TEMPERATURE											

REMARKS:

METALLURGICAL RESEARCH DEPT.

CABLE
"GALSAL"

THE GALIGHER COMPANY

P. O. BOX 203 - 545-585 WEST 4TH SOUTH STREET
SALT LAKE CITY, UTAH 84110 - U.S.A.

TELEPHONE
359-3731

OUR LOT NO. 157-1
DATE 10-15-67
BY LD

TEST NO. 5 NAME Ken Addison

same as test 4 except finer grind (15')

PRODUCT	Weight	Percent Weight	ASSAY				DISTRIBUTION			
			Pb	Zn			Pb	Zn		
Pb Ro Conc	234	23.2	16.55	10.23	38.0	237.8	86.8	42.1		
Zn	182	18.0	1.42	16.50	26.6	291.0	6.1	57.8		
Feas	16	2.6	1.48	1.05	3.7	2.7	0.9	0.5		
TLS	567	56.2	0.32	0.46	18.0	25.8	4.2	4.6		
Head's (Ch.)	1009	100.0	4.32	5.63	432.4	563.0	100.0	100.0		
Pb Ro tail		76.8	0.63	4.24	48.4	325.5	11.2	57.9		

OPERATION	TIME	REAGENTS - LBS. PER TON	GRINDING PRODUCT										
			8M	Pb Ro	TLS	Head	Coat	Coat	Zn Ro	Feas	MESH	%	%
	15		3			5	5	5	5	3			
Time	4.0					4.0							
NaCN	0.15												
Zn SO4	2.0												
P-343			0.05	0.05									
MIBC			0.43	0.23									
Ca SO4						1.0							
Z-200							0.08		0.04				
MACHINE			1000										
R.P.M.			1700										
pH			8.7			12.1	12.0						
% SOLIDS		50											
TEMPERATURE													

REMARKS:

MESH	%	%
+10		
+14		
+20		
+28		
+35		
+48		
+65		
+100	1.6	
+150	8.9	
+200	9.7	
+325	52.4	
+325	57.4	

METALLURGICAL RESEARCH DEPT.

CABLE
"GALSAL"

THE GALIGHER COMPANY

P. O. BOX 209 - 545-555 WEST 8TH SOUTH STREET
SALT LAKE CITY, UTAH 84110 - U.S.A.

TELEPHONE
359-8751

OUR LOT NO. _____
DATE 12-11-51
BY SL

TEST NO. 6 NAME Kerr Addition
same as test 4 except finer grind (25')

PRODUCT	Weight	Percent Weight	ASSAY				DISTRIBUTION			
			Pb	Zn			Pb	Zn		
Pb Co Conc	211	21.0	18.30	10.55	38.5	22.5	59.7	39.1		
Zn ✓	152	15.1	1.40	20.40	21.	208.0	4.9	54.4		
Lead ✓	144	4.4	1.19	1.74	5.2	7.7	1.2	1.4		
Flint	526	52.5	0.30	0.48	17.8	28.6	4.2	5.1		
Head (Calc)	1006	100.0	4.29	5.66	428.4	565.8	100.0	100.0		
Pb Co Tail		79.0	0.56	4.36	44.1	344.3	10.3	60.9		

OPERATION	TIME	REAGENTS - LBS. PER TON	Pb Co	Zn	Cu	Fe	S	Pb	Zn	GRINDING PRODUCT		
										MESH	%	%
			3	5	5	5	5	3				
Time	4.0				4.0							
Head	0.15											
P-304	2.0		0.05	0.05								
1918C			0.03	0.03								
Co-504					1.0							
3-200						0.08		0.04			0.2	
MACHINE			1000								2.2	
R.P.M.			1810								5.8	
pH			2.9		12.1	11.9		11.7			21.2	
% SOLIDS	50										70.6	
TEMPERATURE												

REMARKS: Test 4, 56 - Pb & Zn conc. high in mill, excessive Fe floating in tail
with Pb & Zn conc. somewhat of a tight pulp with 1 Zn float. The
float was the best float.

METALLURGICAL RESEARCH DEPT.

CABLE
"GALSAL"

THE GALIGHER COMPANY

P. O. BOX 209 - 545-585 WEST 8TH SOUTH STREET
SALT LAKE CITY, UTAH 84110 - U.S.A.

TELEPHONE
359-6731

OUR LOT NO. 1759-B
DATE 12-15-67
BY JX

TEST NO. 1 NAME Kerr Addison

Dried Slimes

PRODUCT	Weight	Percent Weight	ASSAY				DISTRIBUTION			
			Pb	Zn			Pb	Zn		
Pb Ro Conc	264	26.4	14.90	7.91	393.5	209.6	89.6	38.1		
Zn ✓	179	16.9	1.41	18.20	27.8	307.5	5.4	56.1		
C head ✓	152	2.2	1.48	7.32	3.3	5.1	0.8	0.9		
Head (ch.)	544	54.5	0.34	0.49	18.5	26.7	4.2	4.9		
Head (ch.)	999	100.0	4.39	5.98	439.1	548.3	100.0	100.0		
Pb Ro Tail		73.6	0.62	4.61	48.6	338.3	10.4	61.9		

OPERATION	TIME	REAGENTS - LBS. PER TON	GRINDING PRODUCT					MESH	%
			Pb Ro	Zn	Head	30	45		
	10		3	5	5	5	5		
Final		5.0					4.0	+10	
NECN		0.15						+14	
Zn SO4		2.0						+20	
Pb SO4 3Xant 4531			0.05	0.025				+28	
H2O2			0.02	0.03				+35	
Cu SO4					1.0			+45	
Zn SO4						0.08		+65	
							0.04	+100	3.1
								+150	
MACHINE			1070					+200	
R.P.M.			1000					+325	
pH			9.0		12.3	12.7		+325	52.1
% SOLIDS		50							
TEMPERATURE									

REMARKS:

METALLURGICAL RESEARCH DEPT.

CABLE
"GALVAL"

THE GALIGHER COMPANY

P. O. BOX 209 - 545 585 WEST 8TH SOUTH STREET
SALT LAKE CITY, UTAH 84110 - U.S.A.

TELEPHONE
589-8731

OUR LOT NO. 1757-B
DATE 1-27-56
BY JH

TEST NO. 6 NAME Kevin Adams
Sample no that is percent finer ground (25')

PRODUCT	Weight	Percent Weight	ASSAY				DISTRIBUTION			
			Pb	Zn	Pb	Zn	Pb	Zn		
Pb to Conc	217	21.7	17.70	7.95	384.0	172.5	89.7	31.3		
Zn to Conc	140	14.0	1.34	24.11	18.8	341.0	4.4	62.0		
To Sear Conc	29	2.9	1.29	2.24	3.8	6.5	0.9	1.2		
To Sear Tail	513	61.4	0.35	0.49	21.5	30.1	5.0	5.5		
Head (Calc)	499	100.0	4.28	5.50	428.0	550.1	100.0	100.0		
Pb to Tail		78.3	0.56	4.82	44.0	377.6	10.3	68.7		

OPERATION	TIME	REAGENTS - LBS. PER TON	GRINDING PRODUCT					
			MESH	%	%			
			25	3	5	5	5	3
5 round		5.0			4.0			
Na CN		0.15						
Zn SO4		2.0						
1.5% H2O2 343			0.05	0.025				
MIBC			0.03	0.03				
Ca SO4					1.0			
2-700						0.08	0.04	
MACHINE			1000					
R.P.M.			1000					
pH			8.4		11.9	11.3		
% SOLIDS		50						
TEMPERATURE								

REMARKS:

RECEIVED
 JAN 17 1968
 KERR ADDISON MINES LTD.
 Per.....

JAN 11 1968

N 9 RNP 10M.-11.67

NORANDA MINES LIMITED
 ASSAY REPORT

GALICHER COMPANY

KERR ADDISON

NORANDA, QUE.

Jan 10/68

W.S.R.
 K.C.G.
 J.H.S.
 E.F.
 R.D.S.
 B.C.B.
 P.M.K. ✓
 S.W.M.
 R.O.M.
 C.K.W.
 I.R.S.
 G.P.R.
 K.F.L.
 I.B.
 E.C.J.

PRODUCT	DATE	Au	Ag	Cu	SiO ₂	Fe	Pb	Zn	Ni	As	Al ₂ O ₃	S				
	SAMPLED	OZS/TON			%	%	%	%	%	%	%	%				
Pb Ro Conc	1759A	#4					14.78	9.73								
Zn Ro Conc	1759A	#4					1.40	14.30								
Zn Scav Conc	1759A	#4					1.63	1.73								
Zn Scav Tail	1759A	#4					.26	.47								
Pb Ro Conc	1759A	#5					16.55	10.23								
Zn Ro Conc	1759A	#5					1.42	16.50								
Zn Scav Conc	1759A	#5					1.48	1.05								
Zn Scav Tail	1759A	#5					.32	.46								
Pb Ro Conc	1759A	#6					18.30	10.55								
Zn Ro Conc	1759A	#6					1.40	20.40								
Zn Scav Conc	1759A	#6					1.19	1.74								
Zn Scav Tail	1759A	#6					.30	.48								
Pb Ro Conc	1759B	#4					14.90	7.91								
Zn Ro Conc	1759B	#4					1.41	18.20								
Zn Scav Conc	1759B	#4					1.48	2.32								
Zn Scav Tail	1759B	#4					.34	.49								
Pb Ro Conc	1759B	#5					16.20	8.19								
Zn Ro Conc	1759B	#5					1.35	20.25								
Zn Scav Conc	1759B	#5					1.46	2.10								

copy sent to Serda

9/1

NORANDA MINES LIMITED

ASSAY REPORT

FEB 10 1968
RECEIVED
 FEB 10 1968
 Feb 6/68

GALICHER COMPANY

NORANDA, QUE.

MINES LTD.

PRODUCT	DATE	Au	Ag	Cu	SiO ₂	Fe	Pb	Zn	Ni	As	Al ₂ O ₃	S			
	SAMPLED	OZS/TON			%	%	%	%	%	%	%	%			
Zn Ro Tail	1759 A	Test #7					.40	.374							
	B						.56	.462							
Pb #1 Cl Tail	1759 A						1.65	8.35							
	B						4.10	7.07							
Zn #1 Cl Tail	A						.52	.784							
	B						.84	1.766							
Pb #2 Cl Tail	1759 A						8.56	13.2							
	B						14.05	9.10							
Zn #2 Cl Tail	1759 A						2.39	5.19							
Pb #3 Cl Tail	1759 A						16.82	15.5							
Zn #3 Cl Tail	1759 A						4.45	7.29							
Pb #2 Cl Conc	1759 B						47.10	7.06							
Zn #2 Cl Conc	1759 B						2.69	54.0							
Pb #3 Cl Conc	1759 A						56.50	9.64							
Zn #3 Cl Conc	1759 A						4.61	50.8							
Zn #2 Cl Scav Tail	1759 B						3.39	7.55							
Zn #2 Cl Scav Conc	1759 B						4.58	45.0							

R.O.M.
 ✓

(E.C.)

copy sent to Sivola

Comments

The "aging" which speaks
of must surely be oxidation
along the charge planes
of the films, in other
words it must be a very
thin film of lead sulphate.

Japanese "Japanese Sorex" -
Wine tobacco 7% Fe in
bulk conc. but paper 2-3%.
2-3% Fe could be contained
as iron in sphalerite &
consequently only 4% pyrite
could be dissolved in conc.
^{than}
~~or to 4% in ore.~~

KEHR ADDISON MINES LIMITED

(FOR INTER-OFFICE USE ONLY)

W.S.R.
K.C.B.
J.H.S.
J.P.
R.D.S.
B.C.B.
P.M.K.
G.W.H.
R.O.M.
C.K.W.
G.R.
K.F.L.
J.I.B.
E.C.J.

To W. M. Sirola From P. M. Kavanagh

Subject Metallurgical Testing - Date May 1st, 1968
Vangorda and Swim Lakes Deposits, Yukon.

RECEIVED
MAY 2 1968

Attached is a copy of the Galigher Company's final report dated February 19th, 1968 which I have neglected until now to send you. Shortly after receiving the report we put a copy in the hands of Mr. Ames, Noranda's general superintendent of mills, and I will be shortly asking him if he has had an opportunity to give it serious consideration.

In the meantime yesterday I spoke to Mr. Huch of Galigher on the phone about the poundage of new material they would require. He advised that 35 lbs. from each deposit would be sufficient for further open-circuit and some closed-circuit testing. I think we should plan on obtaining about 100 lbs. from each deposit, which amounts Huch says would be quite adequate to cover any extra testing which they or we might want to do.

I will plan on going over the situation with Ames and will let you know what his views are before we make any more definite Winkie drilling plans.

You will be interested to know that Galigher has found a considerable variation in grain size and pyrrhotite content in the Anvil deposit. I gained the impression that their early very optimistic ideas on Anvil metallurgical performance may now be somewhat sobered.

Paul M. Kavanagh

PMK:sw

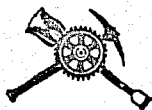
cc: L. Ames.

Sivola

FEB 21 1968

THE GALIGHER COMPANY

ESTABLISHED 1901



CABLE ADDRESS
GALSAL

545-585 WEST EIGHTH SOUTH STREET
P. O. BOX 209
SALT LAKE CITY, UTAH, 84110
U.S.A.

W.M.
W.C.
A.M.S.
E.F.
R.D.S.
B.C.D.
P.M.K.
G.W.M.
R.O.M.
C.R.W.
J.B.S.
G.P.R.
K.F.L.
J.I.B.
E.C.J.

TELEPHONE
359-8731
AREA CODE 801

February 19, 1968

Dr. Paul M. Kavanagh
Vice President - Exploration
Kerr Addison Mines Limited
Suite 1600-44 King Street West
Toronto 1, Ontario
Canada

Dear Dr. Kavanagh:

The test results have been calculated from the last group of assays received from Noranda, these being summarized as follows:

Test No. 7, Lot No. 1759-A, Vangorda

Product	Wt. %	Assays		Distributions	
		% Pb	% Zn	Pb	Zn
Pb #3 Cl Conc	5.1	56.50	9.64	72.5	9.6
Pb #3 Cl Tail	0.8	16.82	15.5	3.4	2.4
Pb #2 Cl Tail	1.1	8.56	13.2	2.4	2.8
Pb #1 Cl Tail	15.1	1.65	8.35	6.3	24.6
Zn #3 Cl Conc	5.2	4.61	50.8	6.0	51.5
Zn #3 Cl Tail	0.6	4.45	7.29	0.7	0.8
Zn #2 Cl Tail	2.1	2.39	5.19	1.3	2.1
Zn #1 Cl Tail	14.1	0.52	0.784	1.8	2.1
Zn Ro Tail	55.9	0.40	0.374	5.6	4.1
Head (Calc.)	100.0	3.97	5.13	100.0	100.0
Pb #2 Cl Conc	5.9	51.1	10.43	75.9	12.0
Pb #1 Cl Conc	7.0	44.4	10.86	78.3	14.8
Pb Ro Conc	22.1	15.2	9.16	84.6	39.4
Pb Ro Tail	77.9	0.79	4.00	15.4	60.6
Zn #2 Cl Conc	5.8	4.60	46.3	6.7	52.3
Zn #1 Cl Conc	7.9	4.02	35.3	8.0	54.4
Zn Ro Conc	22.0	1.77	13.2	9.8	56.5

LEADERS IN EXPERIENCE AND SERVICE

AIR
MAIL

THE GALIGHER COMPANY

Kerr Addison Mines Limited
 February 19, 1968
 Page 2

Test No. 7, Lot No. 1759-B - Swim Lake

Product	Wt. %	Assays		Distributions	
		% Pb	% Zn	Pb	Zn
Pb #2 Cl Conc	5.4	47.10	7.06	61.4	7.4
Pb #2 Cl Tail	1.6	14.05	9.10	5.4	2.8
Pb #1 Cl Tail	17.4	4.10	7.07	17.2	24.0
Zn #2 Cl Conc	3.8	2.69	54.0	2.5	39.9
Zn #2 Cl Scav Conc	1.6	4.58	45.0	1.8	14.0
Zn #2 Cl Scav Tail	2.4	3.39	7.55	2.0	3.5
Zn #1 Cl Tail	9.1	0.84	1.766	1.8	3.1
Zn Ro Tail	58.7	0.56	0.462	7.9	5.3
Head (Calc.)	100.0	4.14	5.14	100.0	100.0
Pb #1 Cl Conc	7.0	39.6	7.54	66.8	10.2
Pb Ro Conc	24.4	14.3	7.20	84.0	34.2
Pb Ro Tail	75.6	0.87	4.61	16.0	65.8
Comb. Zn Conc	5.4	3.24	51.3	4.3	53.9
Zn #2 Cl Tail	4.0	3.85	22.5	3.8	17.5
Zn #1 Cl Conc	7.8	3.28	37.8	6.3	57.4
Zn Ro Conc	16.9	1.96	18.4	8.1	60.5

A study of the above results allows for the following observations:

1. It is, first of all, seen that there was considerable rejection of zinc in the first lead cleaner tail, even though approximately 35-40% of the zinc floated in the lead rougher concentrate. The lead rougher concentrate was subjected to a fine regrind prior to cleaning, and this undoubtedly resulted in a substantial liberation of Pb-Zn middlings. It is believed that the major percentage of zinc reporting in the lead cleaner tailings would eventually report to the head of the zinc circuit and be recovered in the zinc concentrate.
2. The final lead concentrates for both samples still assay relatively high in zinc. This picture could possibly be improved by employing a finer regrind, and this should also result in improved lead assays as well as a higher percentage of zinc which should report to the zinc circuit.
3. There is a very high percentage of lead which reported to the first lead cleaner tail in the testing of the Swim Lake sample, and a relatively high percentage with the Vangorda sample. The testing of other ores from your area has shown that sample ageing can cause this, and the effect is rather dramatic. We can only speculate on the reasons which might account for this observation, but we know that it can happen, and the ageing of your samples could account for the above results. The only way to be sure would be to test fresh samples of ore.

THE GALIGHER COMPANY

Kerr Addison Mines Limited
February 19, 1968
Page 3

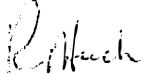
4. The zinc responded quite well to flotation after the regrinding of the rougher concentrates. As was seen in the lead circuit, a tremendous up-grading was achieved in just the first stage of cleaning. Of that zinc which floated in the rougher circuit, approximately 90% reported to the final concentrates (with the Swim Lake sample, this is the combined #2 C1 Conc and #2 C1 Scav Conc).

We would be very much interested in receiving your impressions regarding the above test results, and we would also appreciate some indication as to the results obtained by Noranda in their earlier testing.

Regarding further testing, it looks as though further work could be done concerning concentrate regrinding, particularly in the lead circuit. Also, closed circuit testing would definitely be in order to determine the eventual disposition of the rather large amounts of lead and zinc contained in the circulating load products (cleaner tailings). However, we feel that such testing should be conducted on freshly taken ore samples as the results would be more meaningful, based on our past experiences with other ore samples taken from your district.

Sincerely yours,

THE GALIGHER COMPANY



R. O. Huch
Metallurgist

ROH/dh

METALLURGICAL RESEARCH DEPT.

CABLE
"GALSAL"

THE GALIGHER COMPANY

P. O. BOX 209 — 845-585 WEST 8TH SOUTH STREET
SALT LAKE CITY, UTAH 84110 — U.S.A.TELEPHONE
359-8731OUR LOT NO. 1759-A
DATE 1/17/68
BY ROH

TEST NO. 7

NAME Kerr Addison

Same as Test 4 except with concentrate regrinding & cleaning.

PRODUCT	Weight	Percent Weight	ASSAY				DISTRIBUTION				
			Pb	Zn			Pb	Zn			
Pb #3 Cl Conc		5.1	56.50	9.64				72.5	9.6		
Pb #3 Cl Tail		0.8	16.82	15.5				3.4	2.4		
Pb #2 Cl Tail		1.1	8.56	13.2				2.4	2.8		
Pb #1 Cl Tail		15.1	1.65	8.35				6.3	24.6		
Zn #3 Cl Conc		5.2	4.61	50.8				6.0	51.5		
Zn #3 Cl Tail		0.6	4.45	7.29				0.7	0.8		
Zn #2 Cl Tail		2.1	2.39	5.19				1.3	2.1		
Zn #1 Cl Tail		14.1	0.52	0.78				1.8	2.1		
Zn Ro Tail		55.9	0.40	0.37				5.6	4.1		
Lead (Calc.)		100.0	3.97	5.13				100.0	100.0		

OPERATION	Zn							Pb				GRINDING		
	BM	Pb Ro	Ro	Cond	Cond	Cond	Zn Ro	Regrind	#1 Cl	#2 Cl	#3 Cl	PRODUCT		
TIME	10	3	5	5	5	5	5	15	5	4	2-4			
REAGENTS — LBS. PER TON														
												MESH	%	%
Lime	4.0			4.0								+10		
NaCN	0.15							0.10			0.20	+14		
ZnSO4	2.0											+20		
R-3		0.05	0.025					0.10				+28		
MI		0.03	0.03									+35		
CuSO4					1.0							+48		
Z-200						0.08						+45		
												+100		
												+150		
MACHINE		1000							1000	500	500	+200		
R.P.M.		1000							1000	1000	1000	+325		
pH				11.5	11.4							-325		
% SOLIDS	50	25												
TEMPERATURE														

REMARKS: Zn seemed well activated before Z-200 addition.

*5000 grams small balls - thickened on 325 mesh

METALLURGICAL RESEARCH DEPT.

CABLE
"GALBAL"

THE GALIGHER COMPANY

P. O. BOX 209 — 545.525 WEST 8TH SOUTH STREET
SALT LAKE CITY, UTAH 84110 — U.S.A.TELEPHONE
359-8731OUR LOT NO. 1759-B
DATE 1/17/68
BY ROH

TEST NO. 7 NAME Kerr Addison

Same as Test 4 except with concentrate regrinding and cleaning.

PRODUCT	Weight	Percent Weight	ASSAY							DISTRIBUTION					
			Pb	Zn						Pb	Zn				
Pb #2 Cl Conc		5.4	47.10	7.06								61.4	7.4		
Pb #2 Cl Tail		1.6	14.05	9.10								5.4	2.8		
Pb #1 Cl Tail		17.4	4.10	7.07								17.2	24.0		
Zn #2 Cl Conc		3.8	2.69	54.0								2.5	39.9		
Zn #2 Cl Scav Conc		1.6	4.58	45.0								1.8	14.0		
Zn #2 Cl Scav Tail		2.4	3.39	7.55								2.0	3.5		
Zn #1 Cl Tail		9.1	0.84	1.766								1.8	3.1		
Zn Ro Tail		58.7	0.56	0.462								7.9	5.3		
Head (Calc.)		100.0	4.14	5.14								100.0	100.0		

OPERATION	RM	Pb Ro	Ro	Cond	Cond	Cond	Zn Ro	Pb		Zn		GRINDING PRODUCT		
								Regrind*	#1 Cl	#2 Cl	Regrind*	MESH	%	%
TIME	10	3	5	5	5	5	5	15	3-8	5	15			
REAGENTS — LBS. PER TON														
Lime	5.0			4.0							2.0	+10		
NaCN	0.15							0.10	0.20			+14		
ZnSO ₄	2.0											+20		
H ₂ O ₂		0.05	0.025					0.10				+23		
M		0.03	0.03									+35		
CuSO ₄					1.0							+48		
Z-200						0.08					0.08	+65		
												+100		
												+150		
MACHINE		1000							1000	500		+200		
R.P.M.		1000							1000	1000		+325		
pH		8.3		11.4	11.4							-325		
% SOLIDS	50	25												
TEMPERATURE														

REMARKS: Zn fairly well activated before Z-200 addition. Fe activated in Pb regrind mill discharge. Scummy froth in Pb cleaners.

*5000 grams small balls - thickened on 325 mesh.

TO: Kerr Addison Mines Ltd.
405 - 1112 West Pender Street
VANCOUVER, B. C.



PHONE: (604) 876-4111
TELEX: 04-50353
CABLE ADDRESS:
ELDRICO

cc: Kerr Addison Mines Ltd.
1600 - 44 King Street West
TORONTO, Ontario
ATTENTION: Mr. P. N. Kavanagh

Certificate of Assay
COAST ELDRIDGE
PROFESSIONAL SERVICES DIVISION
WARNOCK HERSEY INTERNATIONAL LIMITED
125 EAST 4TH AVE. VANCOUVER 10, B.C., CANADA

FILE NO. A.3-K-68-1758

DATE September 12, 1968

We Hereby Certify that the following are the results of assays made by us upon submitted DRILL CORE samples

MARKED	GOLD		SILVER	Lead (Pb)	Zinc (Zn)	Copper (Cu)	PER CENT.	Footage	Weight
	OUNCES PER TON	VALUE PER TON	OUNCES PER TON	PER CENT.	PER CENT.	PER CENT.		PER CENT.	PER CENT.
15 C <i>Kerr Addison Mines</i>		\$	1.66	4.30	5.06	0.12		160-200	38 lbs.
15 C <i>Kerr Addison Mines</i>			1.77	4.74	5.22	0.15		204-250	38 lbs.
A 24 <i>Swain Lakes</i>			1.62	3.96	4.60	0.21		151.7-200	65 lbs.

/bg Gold calculated at \$ per ounce

Note. Rejects retained one week.
Pulps retained one month.
Pulps and rejects may be stored for a maximum of one year by special arrangement.

Unless it is specifically stated otherwise, gold and silver values reported on these sheets have not been adjusted to compensate for losses and gains inherent in the fire assay process.

H. Shaffer

Provincial Assayer

TO:

Kerr Addison Mines Ltd.,
405 - 1112 West Pender Street
Vancouver, B.C.



PHONE: (604) 876-4111
TELEX: 04-50353
CABLE ADDRESS:
ELDRICO

Certificate of Assay
COAST ELDRIDGE
PROFESSIONAL SERVICES DIVISION
WARNOCK HERSEY INTERNATIONAL LIMITED
125 EAST 4TH AVE. VANCOUVER 10, B.C., CANADA

FILE NO. A.3-J.2-69-4035

DATE January 15, 1969

We Hereby Certify that the following are the results of assays made by us upon submitted ORE samples

MARKED	GOLD		SILVER	Cadmium	PER CENT.	PER CENT.	PER CENT.	PER CENT.	PER CENT.
	OUNCES PER TON	VALUE PER TON	OUNCES PER TON	PER CENT (Cd)					
<i>Swim LAKES 4.7</i> A - 24 151.7 - 200 (D.D.H.) $\frac{1}{100} \text{ Cd in Conc.} =$ $\frac{.03 \times 150\%}{5} = 0.90 = 6\#$ <i>Smelter Deduction = 5\#</i> $0.25\% =$ <i>Smelter Pays For</i> $6 - 5 = 1\# \text{ Cd in Conc.}$ $\text{VALUE} = 2.70$ <i>cc - PMK - Jan 14/69</i>		\$		0.03					

RECEIVED
JAN 16 1969
KERR ADDISON MINES LTD.

/jp

Gold calculated at \$ per ounce

Note. Rejects retained one week.
Pulps retained one month.
Pulps and rejects may be stored for a maximum of one year by special arrangement.

Unless it is specifically stated otherwise, gold and silver values reported on these sheets have not been adjusted to compensate for losses and gains inherent in the fire assay process.

* 50% In Conc.

H. J. [Signature]

Provincial Assayer

TO:

Kerr Addison Mines Ltd.,
405 - 1112 West Pender Street
Vancouver, B.C.



Certificate of Assay
COAST ELDRIDGE
PROFESSIONAL SERVICES DIVISION
WARNOCK HERSEY INTERNATIONAL LIMITED
125 EAST 4TH AVE. VANCOUVER 10, B.C., CANADA



Member
Canadian Testing
Association

PHONE: (604) 876-4111
TELEX: 04-50353
CABLE ADDRESS:
ELDRICO

FILE NO. A.3-J.2-69-4035

DATE January 15, 1969

We Hereby Certify that the following are the results of assays made by us upon submitted ORE samples

MARKED	GOLD		SILVER	Cadmium PER CENT (Cd)	PER CENT.	PER CENT.	PER CENT.	PER CENT.	PER CENT.
	OUNCES PER TON	VALUE PER TON	OUNCES PER TON						
<i>Swim LAKES Y.T.</i> (A - 24) 151.7 - 200 (DDH)		\$		0.03					

RECEIVED
JAN 16 1969
KERR ADDISON MINES LTD.

/jp Gold calculated at \$ per ounce

Note. Rejects retained one week.
Pulps retained one month.
Pulps and rejects may be stored for a maximum
of one year by special arrangement.

Unless it is specifically stated otherwise, gold
and silver values reported on these sheets have
not been adjusted to compensate for losses and
gains inherent in the fire assay process.

H. Hayes

Provincial Assayer

A-44

453-468 15' ft. of 1.0% Pb-Zn, and .33 g Ag.
 468-485 17 " " 5.87 " " " .84 g Ag.
 6.8% 1.17

A42

492-503. 11 ft of 1.67% Pb-Zn, and .32 g Ag.
 503-534. 31 ft " " " 1.3 " "
 503-534. 31 " " 7.14% " " "

534
 503
 31

11 x .32
 31 x 1.30
 305 to 327. = 22 ft.
 Ag Pb Zn
 5x .20 1.00 5x .15' .75 5x .16 .80
 5x .08 .40 5x .04 .20 5x .02 .10
 5x .24 1.20 5x .03 .15 5x .04 .20
 7x .20 1.40 7x .15' 1.05 7x .14 .98
 4.00 2.15 2.08
 1.67% Ag
 1.30
 1.62 g.
 1.67
 7.14
 8.81%
 Cu
 5x .38
 5x .29
 5x .19
 7x .22,
 .14 g Ag .098% Pb,
 .094% Zn.

22
 17
 22 | 4.00
 8 | 220
 176
 80
 64
 146
 122
 154

22 | 2.15
 15 | 198
 176
 22
 198
 20

22 | 2.08
 198
 146
 100
 88
 12

KERR ADDISON MINES LIMITED

MEMO

VANCOUVER OFFICE

DATE September 3, 1971.

TO: W.M.S.

FROM: Ted LaRose

SUBJECT: Phone call - 11:45 Friday

Sample locations

#14 - 7.4 feet - from 170.6 to 178

#13 - 7.6 feet of core - from 65 to 96

Mine

Ferr Adkins

Swain Lake - A,

Date

May, 13-71

Hole No.

A-42-71

Sample

N^o

545

#6

From

492

To

497

Sample Length

5-1

Remarks

M/S

.26 1.24 .32 .43

Assay For

Pb, Zn, Ag, Cu.

NORTHERN MINER PRESS

Signed

Redox Lab

Mine

Stone Addition
Sunny Lake A.

Date

July 13-71

Hole No.

A-92-71

Sample

N^o

546

#2

From

497

To

503

Sample Length

6'

Remarks

M/S

.26 .124 .32 .43

Assay For

Pb, Zn, Ag, Cu.

NORTHERN MINER PRESS

Signed

J. Johnson

Mine

Levee Adiron
Sum Lake A

Date

Aug 13-71

Hole No.

A-42-71

#3

Sample

N^o

547

From

503

To

508

Sample Length

5'

Remarks

M/S

3.20 3.72 1.08 .27

Assay For

Pb, Zn, Ag, Cu.

NORTHERN MINER PRESS

Signed

J. L. L.

Mine San Antonio
Swim Lake A.

Date Aug. 13-71

Hole No. A-43-71

#4

Sample N^o 548

From 508 To 513.

Sample Length 5'

Remarks

M/S
4.30 3.82 1.64 .30
Assay For Pb, Zn, Ag, Cu,

NORTHERN MINER PRESS

Signed [Signature]

Mine Leam Addison
Swain Lake A.

Date Aug. 13-71

Hole No. A # 2-71

Sample N^o 549

From 513 To 518

Sample Length 5'

Remarks

M/S
3.40 3.60 1.40 .49
Assay For Pb, Zn, Ag, Cu.

NORTHERN MINER PRESS

Signed J. Sutton.

Mine Kerr Addison
Swim Lake "A"

Date Aug 13 / 71

Hole No. A-42-71

Sample No. 550 #6

From 518 To 523

Sample Length 5'

Remarks

MS

3.50 3.82 1.24 .23

Assay For Pb, Zn, Ag, Cu

NORTHERN MINER PRESS

Signed J. Lutore

Mine Ken Addisa

Swin Lake A

Date Aug 13/71

Hole No. A-42-71

Sample No. 551 #7

From 523' To 530'

Sample Length 7'

Remarks

MS

4.80 4.95 1.56 .32

Assay For Pb, Zn, Ag, Cu

NORTHERN MINER PRESS

Signed J. Latou

Mine Ken Addison

Swine Lick - A

Date Aug 20~~3~~ / 71

Hole No. A 42 - 71

Sample **N^o** **552** #8

From 530' To 534'

Sample Length 4'

Remarks

AS

1.50 1.96 .64 .18

Assay For Pb, Zn, Ag, Cu

NORTHERN MINER PRESS

Signed J. Latou

Mine Kerr Addison
Swim Lake A.

Date Aug 22 / 71

Hole No. A 42 - 71

Sample No. 553 #9

From 305' To 310'

Sample Length 5'

Remarks

25% Py

.15 .16 .24 .38

Assay For Pb, Zn, Ag, Cu

NORTHERN MINER PRESS

Signed J. LaRose

Mine Kerr Addison
Swine Lake - A.

Date Aug 22, 71

Hole No. A-42-71

Sample No 554 #10

From ~~510~~ 310' To ~~515~~ 315'

Sample Length 5'

Remarks
Py

.04 .02 .20 .29
Assay For Pb, Zn, Ag, Cu

NORTHERN MINER PRESS
Signed J. Lator

Mine Kerr Addison
Swain Lake - A.

Date Aug 22, 71

Hole No. A-42-71

#11

Sample N^o 555

From 315' To 320'

Sample Length 5'

Remarks

Pyrrhotite

.03 .04 .08 .19

Assay For Pb, Zn, Ag, Cu

NORTHERN MINER PRESS

Signed J. Latone

Mine Kerr Addison
Sunin Lake - A

Date Aug 22 71

Hole No. A-42-71

Sample No. 556 #12

From 320' To 327'
~~520'~~ ~~527'~~

Sample Length 7'

Remarks

Pyrrhotite

.13 .14 .20 .22

Assay For Pb, Zn, Ag, Cu

NORTHERN MINER PRESS

Signed J. Salton

Mine Kerr Addison
Swim lake - A

Date Aug 22, 71

Hole No. A-41-71

B

Sample No 557

From 65' To 96'

Sample Length 7.6'

Remarks

S

1.35 1.16 .60 .50

Assay For Pb, Zn, Ag, Cu

NORTHERN MINER PRESS

Signed J. Lohr

Mine Kerr Addison
Swim Lake "A"

Date Aug 22, 71

Hole No. A-41-71

14

Sample N^o 558

From 170.6' To 178.0'

Sample Length ~~5.6'~~ 7.4'

Remarks

S

2.15 3.78 1.28 .12

Assay For Pb, Zn, Ag, Cu

NORTHERN MINER PRESS

Signed J. LaFoe

Mine

Levee Addition

Date

Sept-5-71

Hole No.

A-47-71

#15

Sample

N^o

559

From

178

To

195

Sample Length

5.6 ft.

Remarks

Graphite Sh. Schist
Sp.

.62

.20

.82

Assay For

Pb Cu Ag Zn

NORTHERN MINER PRESS

Signed

Ted Lubow

Mine Leer Addison

Swain Lake "A"

Date Sept-5-71

Hole No. A-41-71

Sample **N^o** **560** #16

From 195' To 209.6

Sample Length 5'

Remarks

Synthetic Schist.
Sep.

Assay For Pb, Zn, Cu, Ag .04

NORTHERN MINER PRESS

Signed Ed Luttrell

Mine ~~See~~ Address ~~#~~
Semin Lake "A"

Date Sept - 5 - 71

Hole No. A-44-71

Sample No 561 #17

From 453' To 458'

Sample Length 5'

Remarks M/S

.20 .42 .92
Assay For Ag, Pb, Zn-Cu

NORTHERN MINER PRESS

Signed Ted Lato

Mine Ken Addison Mine
Van. B.C.

Date Sept. 5/71

Hole No. A-44-71

Sample No. 562 ^{#18}

From 458 To 463

Sample Length 5'

Remarks

M/S.

.55 .52 .40
Assay For Pb, Zn, Cu, Ag.

NORTHERN MINER PRESS

Signed Ted LaRoc

Mine Levee Addition
Sweeney Lake "A"

Date Sept - 5 - 71

Hole No. A-44-71

Sample No. 563 #19

From 463' To 468'

Sample Length 5'

Remarks M/S

.40 .24 .35
Assay For Ag, Zn, Pb, Cu

NORTHERN MINER PRESS
Signed Ted Labore

Mine

Kenn Addition

Sunim Lake "A"

Date

Sept - 5 - 71

Hole No.

A - 44 - 71

#20

Sample

No

564

From

468'

To

473

Sample Length

5'

Remarks

M/S

1.75 1.44 .80

Assay For

Pb, Zn, Cu, - Ag.

NORTHERN MINER PRESS

Signed

Jed Latham

Mine Kerr Adhesion
Swim Lake "A"

Date Sept. 5-71

Hole No. A-44-71

Sample #21
No. 565

From 473' To 478

Sample Length ~~4~~ 5'

Remarks

M/S.

.48 1.85 3.84
Assay For Ag, Pb, Cu, Zn.

NORTHERN MINER PRESS

Signed Ed. L. Brown

Mine Laur Addition

Semin Lake "A"

Date Sept. 5-71

Hole No. A-44-71

#22

Sample No. 566

From 478 To 485

Sample Length 7'

Remarks M/S

1.12 .16 3.90 3.70

Assay For Ag, Cu, Zn, Pb.

NORTHERN MINER PRESS

Signed Ed. L. L. L.

DATE August 20, 1971.

ASSAY CERTIFICATE

*Swim L. A. Grand*FILE NO. 6903-7

WHITEHORSE ASSAY OFFICE

1971

P.O. BOX 346. WHITEHORSE. YUKON

D.D.H.A-47

RECEIVED FROM

Kerr-Addison Mines

SAMPLE NO.	YORK OZ. PER TON	SILVER OZ PER TON	Lead	Zinc	Copper			
1	5' 492-497	.32	.26	1.24	.43			
2	6' 503	.32	.57	1.24	.38			
3	5' 508	1.08	3.20	3.72	.27			
4	5' 5130	1.64	4.30	3.82	.30	} 270' @ 8% Pb + Zn + 1.58 oz. Ag.		
5	5' 5180	1.40	3.40	3.60	.49			
6	5.0 5230	1.24	3.50	3.82	.23			
7	7.0 530.0	1.56	4.80	4.95	.32			
		$\frac{10}{579.2}$ 1.578 1.385						

ASSAYER

Geo. Spalding

James L. "A" Grant

DATE August 31, 1971.

ASSAY CERTIFICATE

FILE NO. 6955-7

WHITEHORSE ASSAY OFFICE

P.O. BOX 346. WHITEHORSE. YUKON

Kerr-Addison Mines

RECEIVED FROM _____

SAMPLE NO.	XXXXXX OZ. PER TON	SILVER OZ PER TON	Lead	Zinc	Copper			
<i>AA2</i> { 8 - 530-534	<i>4'</i>	.64	1.50	1.96	.18			
9 - 305-310	<i>5'</i>	.24	.15	.16	.38			
10 - 310-315	<i>5'</i>	.20	.04	.02	.29			
11 - 315-320	<i>5'</i>	.08	.03	.04	.19			
12 - 320-327	<i>4'</i>	.20	.13	.14	.22			
<i>AA1</i> { 13 - 65-96	<i>9.6'</i>	.60	1.35	1.16	.50			
14 - 1706-178	<i>7.4'</i>	1.28	2.15	3.78	.12			

**Core no 7.6 out of 31'*

RECEIVED
SEP 2 1971

KERR ADDISON MINES LTD.

PREL.....

ASSAYER Katherine Hayland for J. Spalding

DATE September 15, 1971.

ASSAY CERTIFICATE

FILE NO. 6987-8

WHITEHORSE ASSAY OFFICE

P.O. BOX 346. WHITEHORSE. YUKON

RECEIVED FROM Kerr-Addison Mines

SAMPLE NO.	XXXXXX OZ. PER TON	SILVER OZ PER TON	Lead	Zinc	Copper			
A-41 { 559-178-195	5.6'	.20	.62	.82	-	RECEIVED SEP 17 1971 KERR ADDISON MINES LTD. Per.....		
560-195-209.6	5'	.04	-	-				
561-453-458	5'	.20	.42	.92				
562-458-463	5'	.40	.55	.52				
A-44 { 563-463-468	5'	.40	.35	.24				
564-468-473	5'	.80	1.75	1.44				
565-473-478	5'	.48	1.85	3.84				
566-478-485	7'	1.12	3.70	3.90	.16			

ASSAYER

Geo. Spalding

DATE October 7, 1971.

ASSAY CERTIFICATE

FILE NO. 6987-8

WHITEHORSE ASSAY OFFICE

P.O. BOX 346. WHITEHORSE, YUKON

RECEIVED FROM Kerr-Addison Mines

SAMPLE NO.	GOLD OZ. PER TON	SILVER OZ. PER TON	Lead	Zinc	Copper			
A-41 } 559	-	-	-	-	.07			
560	-	-	.12	.16	.04			
Composite 561-566	.02	-	-	-	.36			
<p>AAA 453-485-1 32' of 0.36% Cu.</p>								

RECEIVED
OCT 12 1971

KERR ADDISON MINES LTD.

Per..... ASSAYER Geo. Spalding