

62° 10' 30"

132° 57' 00"

132° 56' 00"



62° 10' 00"

62° 09' 30"

132° 57' 00"

132° 56' 00"

of 4/8

UNITED GEOPHYSICAL CO. OF AMERICA. P588

J.B. GROUP PROJECT  
YUKON TERRITORY  
*"D" Anomaly (Group)*  
**BOUGUER**

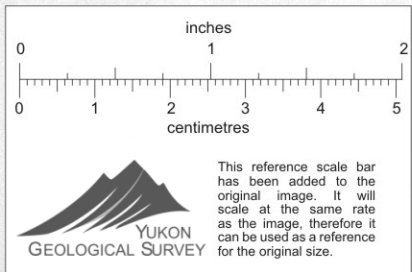
FOR 008706

KERR ADDISON MINES LIMITED

Contour int.: 0.1 mg  
Date: Sept. 1964

Interpreted by: A. RICH  
Approved by: R.B. GALESKI

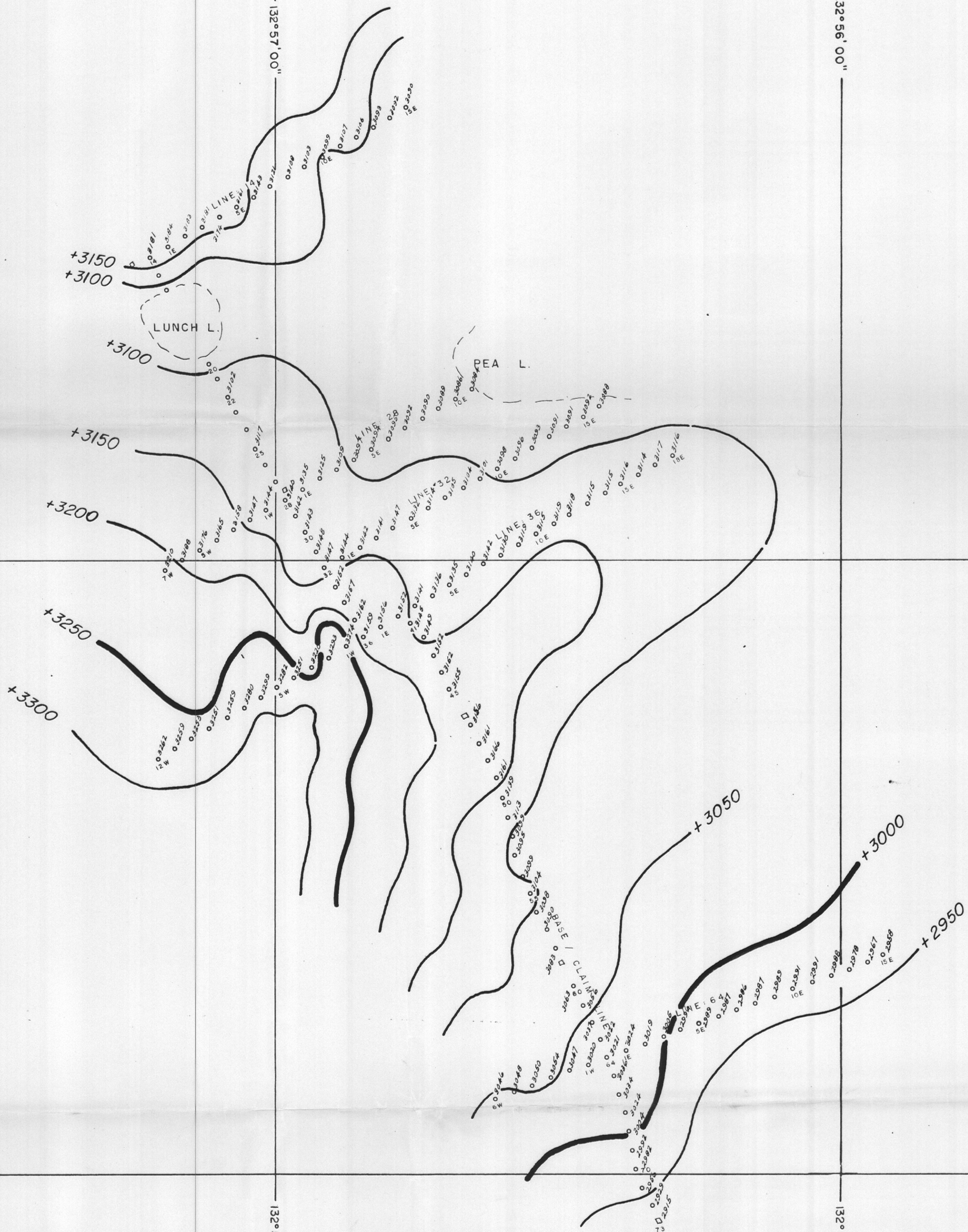
SCALE: 1" = 400'



62° 10' 30"

132° 57' 00"

132° 56' 00"



62° 10' 00"

62° 09' 30"

132° 57' 00"

132° 56' 00"

UNITED GEOPHYSICAL CO. OF AMERICA. P.588

J.B. GROUP PROJECT  
 YUKON TERRITORY  
*"D" Anomaly (Group)*  
**SURFACE ELEVATION**

FOR

KERR ADDISON MINES LIMITED

of 7/50

Contour int.: 50 FT.

Interpreted by: A. RICH

Date: Sept. 1964

Approved by: R.B. GALESKI

SCALE: 1" = 400 FT.

