

008866

MAR 19 1968

105 F

SUITE 1102 - 347 BAY STREET
TORONTO 1, ONTARIO

Telephone:
366-0705

*attach to previous
Jan 68*

W.S.R.
K.C.G.
J.H.S.
E.F.
R.D.S.
B.C.B.
P.M.K. ✓
G.W.M.
R.O.M.
C.K.W.
J.B.S.
G.P.R.
K.F.L.
J.L.B.
<u>E.C.J.</u>

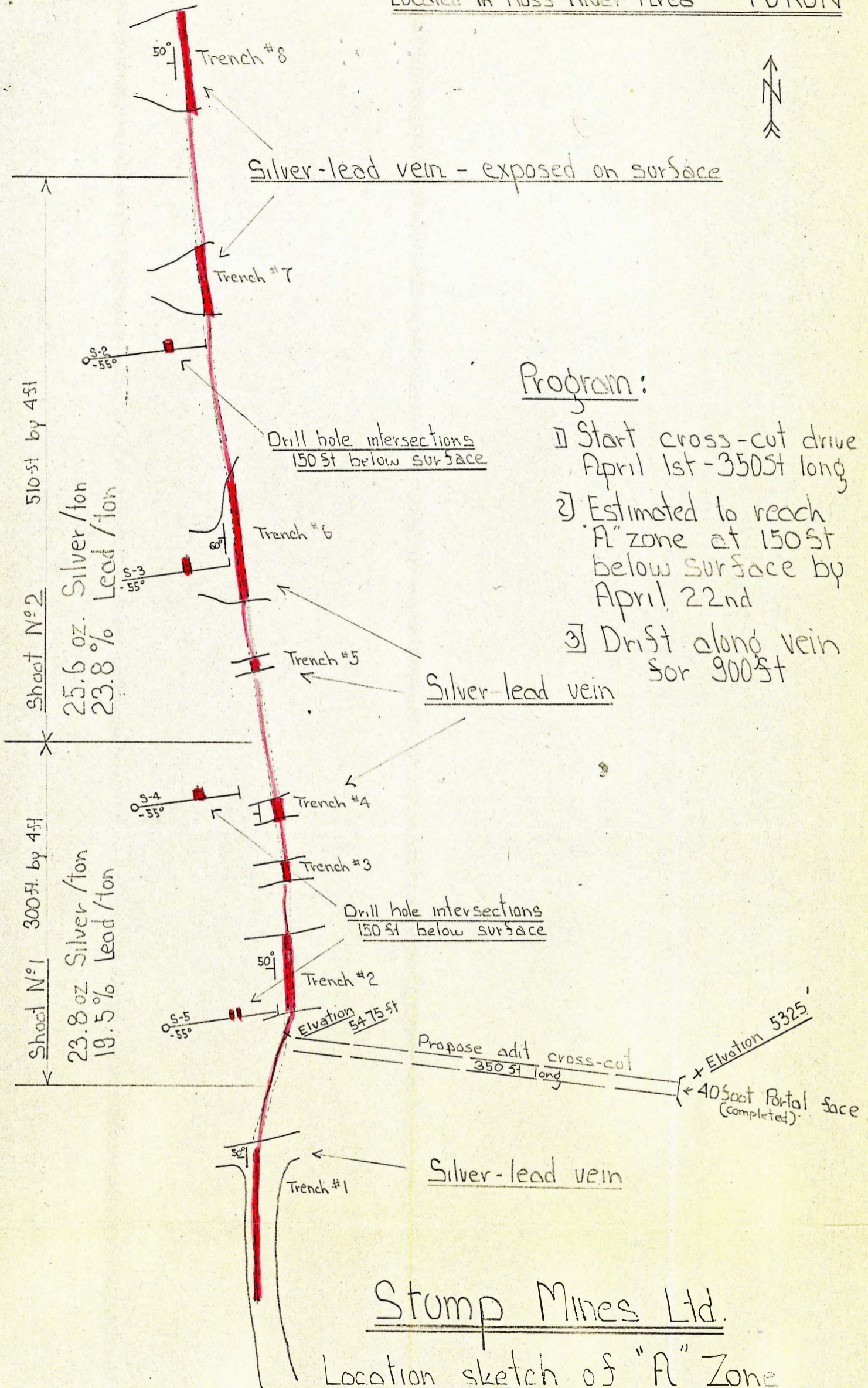
March 18, 1968

From: Leon La Prairie - Managing Director
Stump Mines Ltd.
Silver Key Mines Limited

Re: STUMP MINES LTD. - SILVER KEY MINES
Ketz River Project

A field crew is now on the property establishing camp.

The underground development initially consists of a 350 foot cross-cut to the 'A' zone and is scheduled to get started by April 1st..



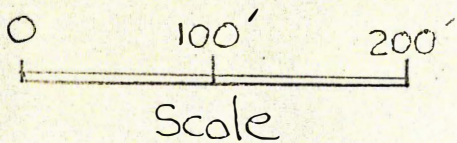
Program:

- 1] Start cross-cut drive April 1st - 350ft long
- 2] Estimated to reach "A" zone at 150ft below surface by April 22nd
- 3] Drift along vein for 900ft

Stump Mines Ltd.

Location sketch of "A" Zone and adit site

March 15/68



August 28, 1968

AUG 29 1968

105 F

FROM: Stump Mines Ltd.

Re: Stump Mines - Ross River Development

attach to

Underground development of the 'A' Zone has outlined in the order of 35,000 tons of Silver-Lead ore that will average 19.42 oz. Silver and 10% Lead over an average width of 2.4 feet for a total distance of 506 feet. The 506 feet consist of four assayed sections of silver as follows:

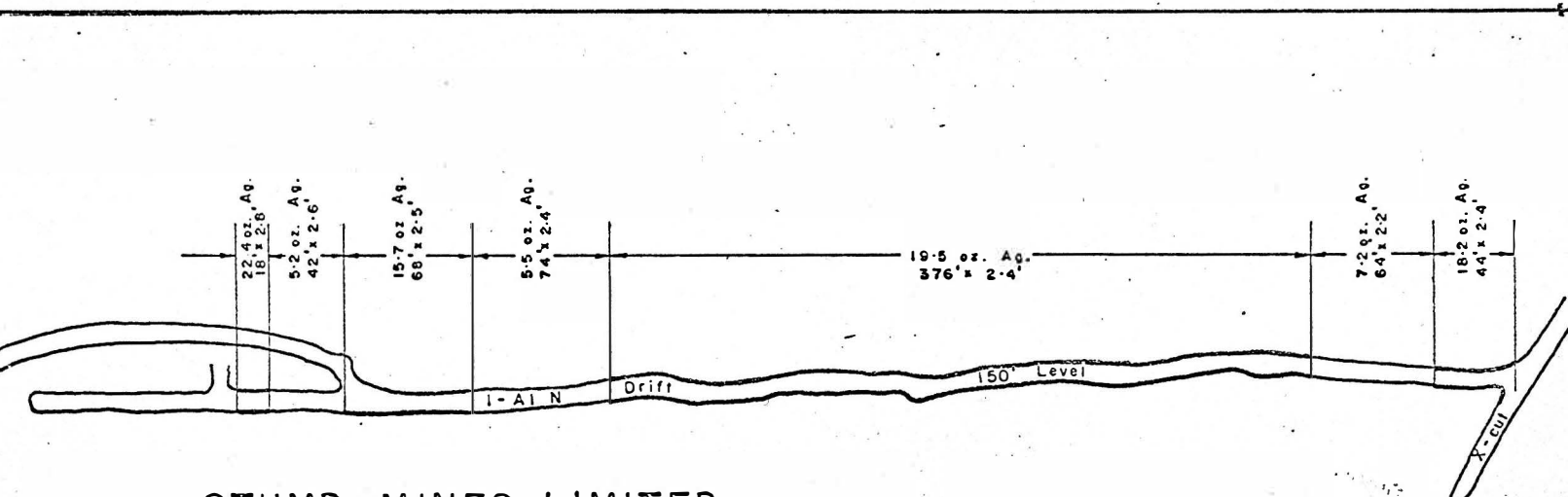
- 44 feet by 2.4 feet assayed 18.2 oz. silver
- 376 feet by 2.3 feet assayed 19.5 oz. silver
- 68 feet by 2.5 feet assayed 15.7 oz. silver
- 18 feet by 2.8 feet assayed 22.4 oz. silver

Currently a raise is being driven from the 150 foot level to the surface on the 'A' zone, for a bulk sample to be mill tested.

The 'A' zone is to be tested to an additional depth by probing the 300 foot and 500 foot horizons by diamond drilling.

In addition to the development of the 'A' zone, Stump Mines has started exploration of the Lap 10 and F-2 zones by adit development. Mineralization in both these zones is expected to be intersected within the first 150 feet of adit advancement.

K.G.G.
 J.H.S.
 E.F.
 R.D.S.
 B.C.B.
 P.M.K. ✓
 G.W.M.
 R.O.M.
 C.K.W.
 (Signature)
 K.F.L.
 (Signature)
 E.C.J.



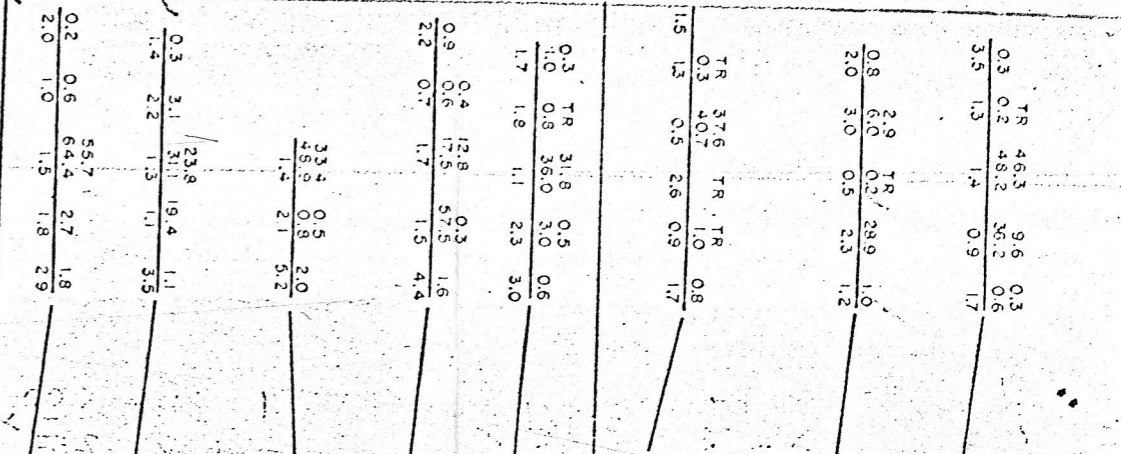
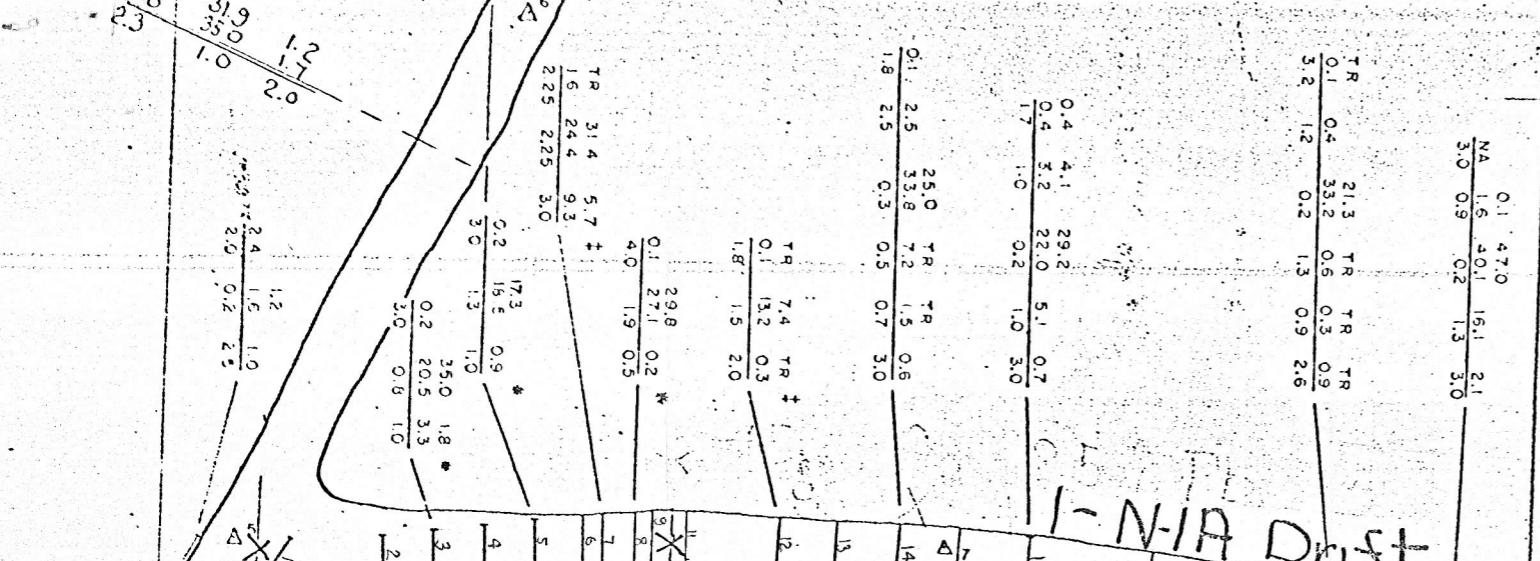
STUMP MINES LIMITED

ASSAY PLAN OF 'A' ZONE
RESULTS TO AUG. 27, 1968

0 100' 200'
SCALE IN FEET

192.05t X 4.5t.
Cont'd Plan N^o 2

15.3oz Silver 10.3% Lead



I-N-IA Drift

105 F
attach to

Stump Mines - Silver Key Mines
Assay Plan of I-N-IA drift

June 21st 1868
20 ft to lin.

- W.S.R.
- K.C.G.
- J.H.S.
- E.F.
- R.D.S.
- B.C.B.
- P.M.K.
- G.W.M.
- R.M.
- C.K.W.
- J.B.S.
- G.P.R.
- E.C.T.

8961 T 2 JUN 2 1868

N^o 1 Plan

9.7oz Ag 96% Pb
43.0st by 4.0st

4.5oz Silver 25% Pb
83.0st by 4st

Legend
Pb
Ag
Foot

222oz Ag 12.8% Pb
51.0st by 4st

10.1oz Ag 59% Pb
31.0st by 4st

13.7oz Ag 106% Pb
109.0st X 4.0st

Cont'd Plan 2

JUN 24 1968

- W.S.R.
- X C.G.
- J.H.S.
- E.F.
- R.D.S.
- B.C.B.
- P.M.K.
- G.W.M.
- R.O.M.
- C.K.W.
- J.B.S.
- G.P.R.
- K.F.L.
- L.B.
- E.C.J.

Cont'd from Plan N^o 1 15.3oz Ag
10.3% Pb

192.0st x 4.0st

0.2	TR	280	TR	0.4
0.5	0.5	212	0.8	1.0
1.3	0.7	5.8	2.0	

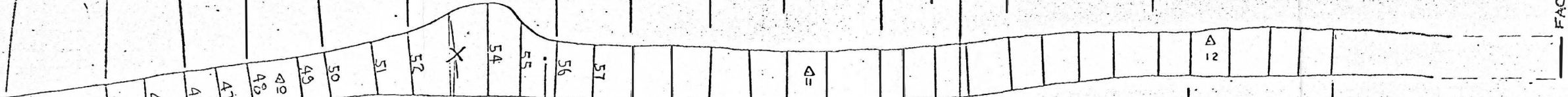
6.4	18.0	TR	TR	TR	TR
7.5	9.2	0.3	0.3	0.3	
0.7	0.4	0.5	0.4	1.2	2.7

4.2	33.4	11.7	TR
5.9	28.0	15.4	0.9
0.8	0.6	0.5	1.2

Waiting Assays

FACE JUNE 16 1968

353 St of Known Zone ahead of Sac



Mineralized Face

Waiting Assays

0.1	TR	31.1	0.1
0.3	0.3	29.0	0.1
1.4	1.3	1.0	3.8

0.4	0.5	4.16	1.1
0.7	1.8	4.10	1.1
1.3	0.7	1.3	4.0

0.9	0.7	3.0	3.0
-----	-----	-----	-----

0.1	TR	41.0	TR	0.3
0.2	0.2	30.0	0.3	0.3
2.0	1.0	2.3	3.4	

0.3	1.7	2.5	28.3	0.8	20.6	1.9
3.7	0.7	0.5	0.4	3.3	0.3	4.0

1.8	34.2	0.5	3.5
0.9	0.5	1.1	2.9

0.1	TR	27.9	TR	2.4	0.2
0.3	0.3	41.9	0.3	3.2	0.2
1.4	1.3	0.9	2.0	0.6	2.0

0.16	TR	38.8	TR	0.9
0.6	0.6	32.0	2.8	0.9
2.0	0.5	0.5	1.5	3.9

4.73	12.7	42.4	TR
0.7	41.4	16.6	35.9
2.2	0.6	1.3	0.4

3.6	46.2	1.2	0.7
6.2	1.9	48.9	6.8
1.6	1.8	0.8	1.9

51.3	5.3	25.2	1.0
50.3	6.7	21.3	
0.3	0.7	1.0	3.7

0.3	1.7	2.5	28.3	0.8	20.6	1.9
3.7	0.7	0.5	0.4	3.3	0.3	4.0

0.1	TR	27.9	TR	2.4	0.2
0.3	0.3	41.9	0.3	3.2	0.2
1.4	1.3	0.9	2.0	0.6	2.0

0.16	TR	38.8	TR	0.9
0.6	0.6	32.0	2.8	0.9
2.0	0.5	0.5	1.5	3.9

4.73	12.7	42.4	TR
0.7	41.4	16.6	35.9
2.2	0.6	1.3	0.4

3.6	46.2	1.2	0.7
6.2	1.9	48.9	6.8
1.6	1.8	0.8	1.9

51.3	5.3	25.2	1.0
50.3	6.7	21.3	
0.3	0.7	1.0	3.7

0.3	1.7	2.5	28.3	0.8	20.6	1.9
3.7	0.7	0.5	0.4	3.3	0.3	4.0

0.1	TR	27.9	TR	2.4	0.2
0.3	0.3	41.9	0.3	3.2	0.2
1.4	1.3	0.9	2.0	0.6	2.0

0.16	TR	38.8	TR	0.9
0.6	0.6	32.0	2.8	0.9
2.0	0.5	0.5	1.5	3.9

4.73	12.7	42.4	TR
0.7	41.4	16.6	35.9
2.2	0.6	1.3	0.4

3.6	46.2	1.2	0.7
6.2	1.9	48.9	6.8
1.6	1.8	0.8	1.9

51.3	5.3	25.2	1.0
50.3	6.7	21.3	
0.3	0.7	1.0	3.7

0.3	1.7	2.5	28.3	0.8	20.6	1.9
3.7	0.7	0.5	0.4	3.3	0.3	4.0

Surface Ore Shoot N^o 2 150 st. above level
Assayed 25.6oz Silver 23.8% Lead 510.0st by 4.0st

June 21st 1968
20st to lin.
N^o 2 Plan

Stump Mines - Silver Key Mines
Assay Plan of I-N-1A dist

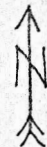
ASSAYS $\frac{Pb}{Ag}$ feet

~~Lead~~
Pb
Ag
feet

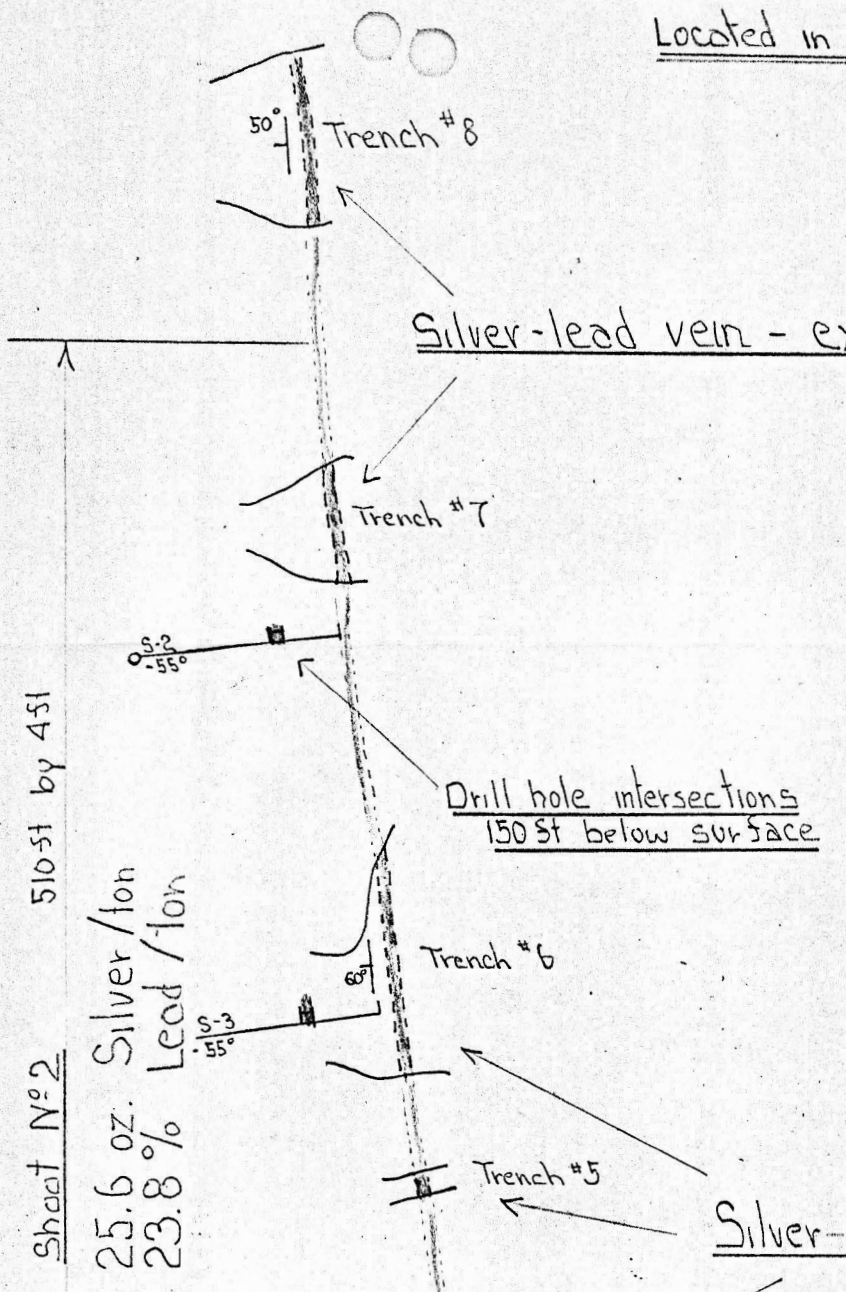
Sampled & waiting assays

Cont'd from Plan N^o 1
13.7oz Ag 10.6% Pb
109.0st x 4st.

JUN 12 1968



W.S.R.
K.C.G.
J.H.S.
E.F.
R.D.S.
B.C.B.
P.M.K. ✓
G.W.M.
R.O.M.
C.K.W.
J.B.S.
G.P.R.
K.F.L.
J.B.
E.C.J.

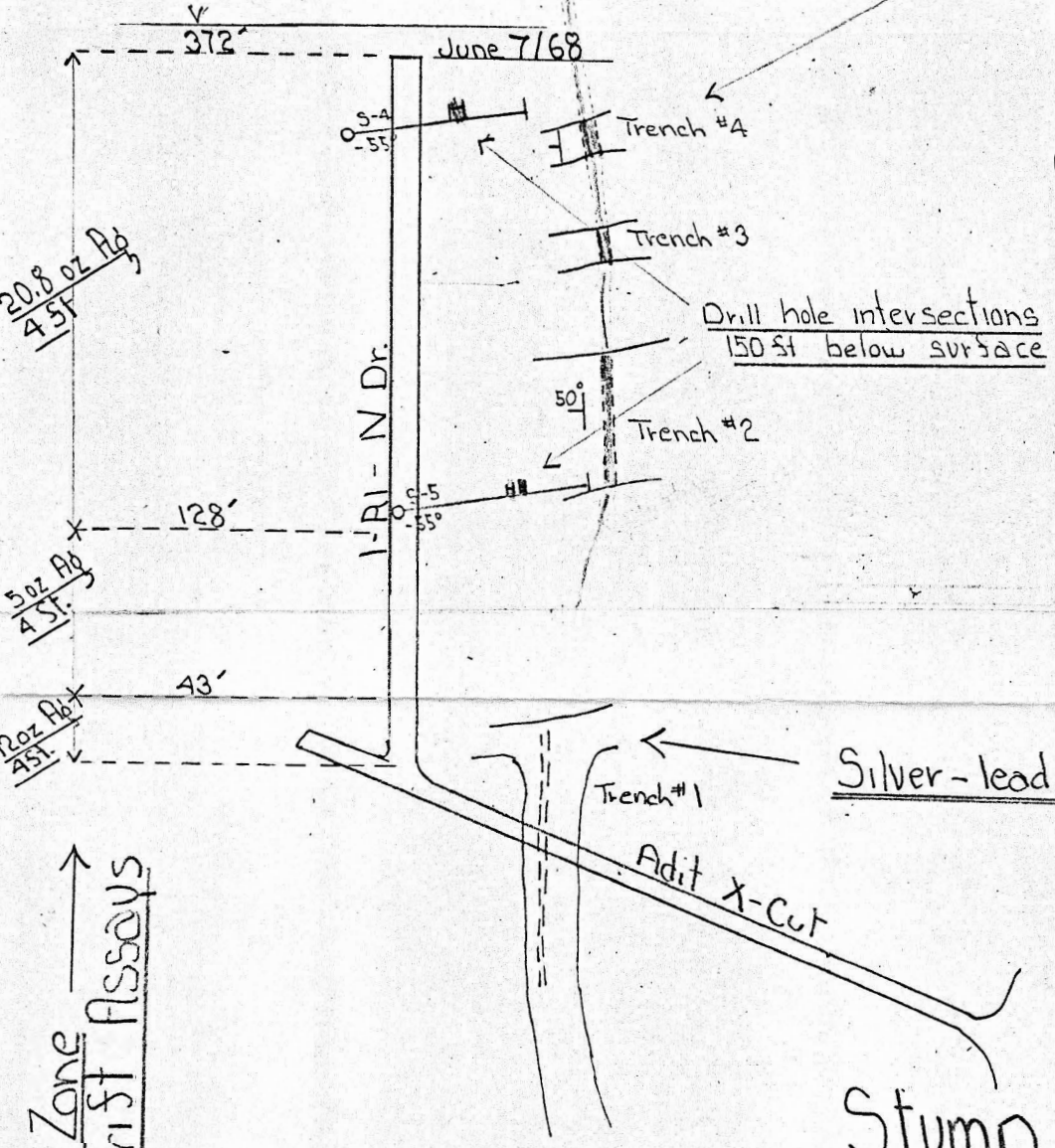


Program:

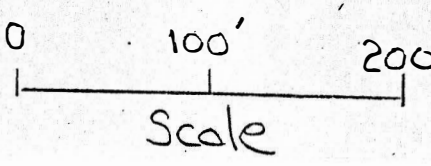
1] Complete adit drive to area beneath trench #8 by June 30th 1968

Results to date:

- ① X-cut to 43' in drift
12oz Silver 45ft width
- ② 43' in drift to 128' north
5oz Silver 45ft width
- ③ 128' - 372' in drift.
First 40ft assays
20.8 oz Silver
additional 204ft
sampled and being
assayed estimated
to be better than
20oz Silver 45ft width



A Zone Drift Assays

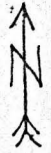


Stump Mines Ltd

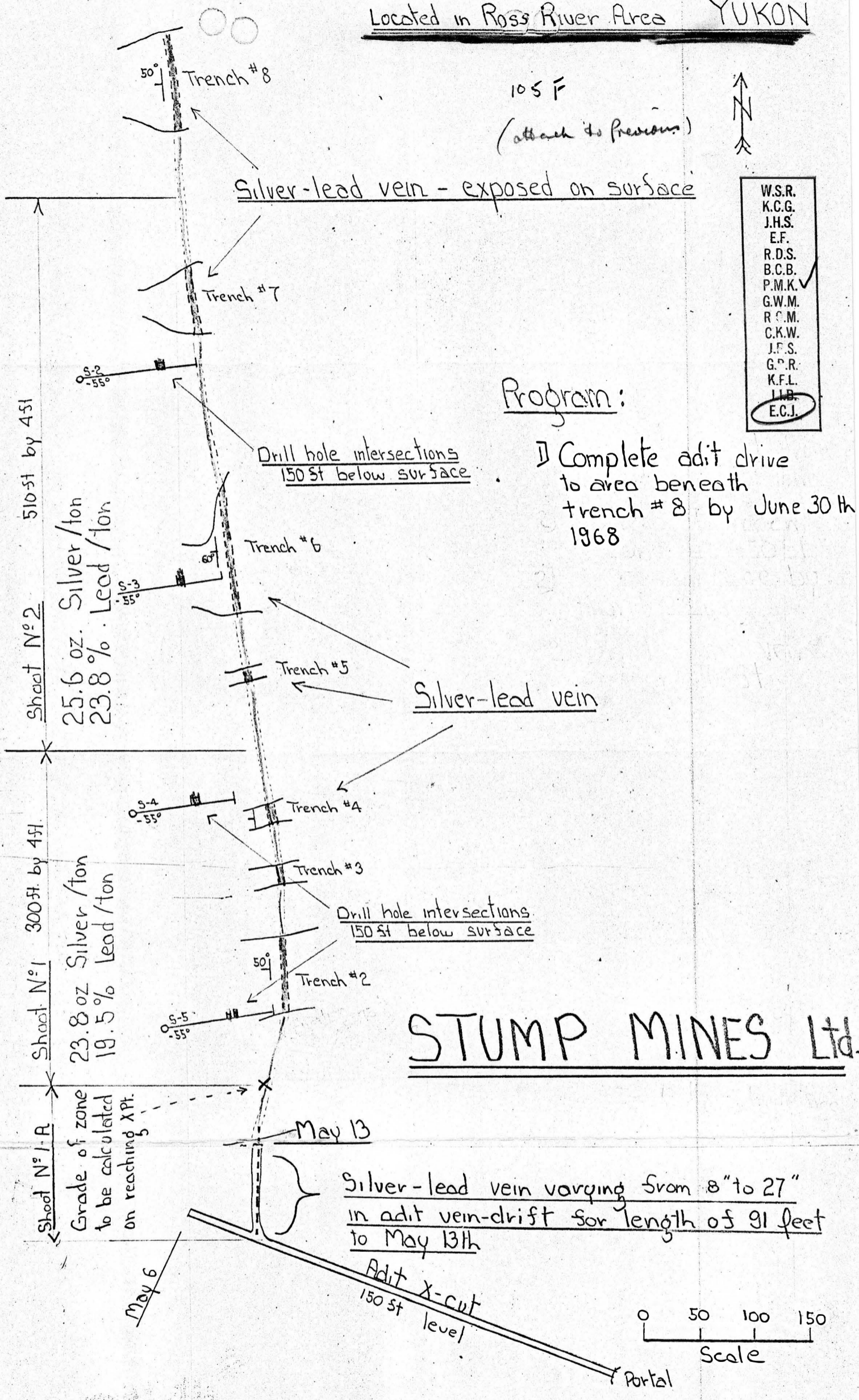
Silver Key Mines Ltd

June 11/68

105 F
(attach to previous)



W.S.R.
K.C.G.
J.H.S.
E.F.
R.D.S.
B.C.B.
P.M.K. ✓
G.W.M.
R.C.M.
C.K.W.
J.F.S.
G.P.R.
K.F.L.
I.L.B.
<u>E.C.J.</u>



Program:

Complete adit drive to area beneath trench # 8 by June 30th 1968

STUMP MINES Ltd.

May 13th 1968

OCT 31 1967

SUITE 1102 - 347 BAY STREET
TORONTO 1, ONTARIO

Telephone:
366-0705

105 F
attach to

W.S.R.
K.C.G.
J.H.S.
E.F.
R.D.S.
B.C.B.
P.M.K. ✓
G.W.M.
R.O.M.
C.K.W.
J.B.S.
G.P.R.
K.F.L.
I.L.B.
E.C.J.

October 30, 1967

FROM: Leon La Prairie, Managing Director
RE: Stump Mines 'A' zone work to-date

Attached please find a location sketch of work completed on the 'A' zone of Stump Mines Ltd., on the Company's Ketz River property in the Yukon.

Plans are to further explore the 'A' zone with 1,200 feet of adit development which will consist of 450 feet of cross-cutting to the 'A' zone and 750 feet of drifting north on the zone. The portal site and storage yard are now being prepared for the start of the adit drive.

Stump Mines Ltd

Location Plan of "A" Zone

Ketza River Property - Yukon

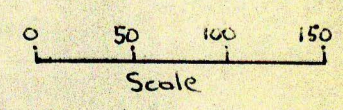
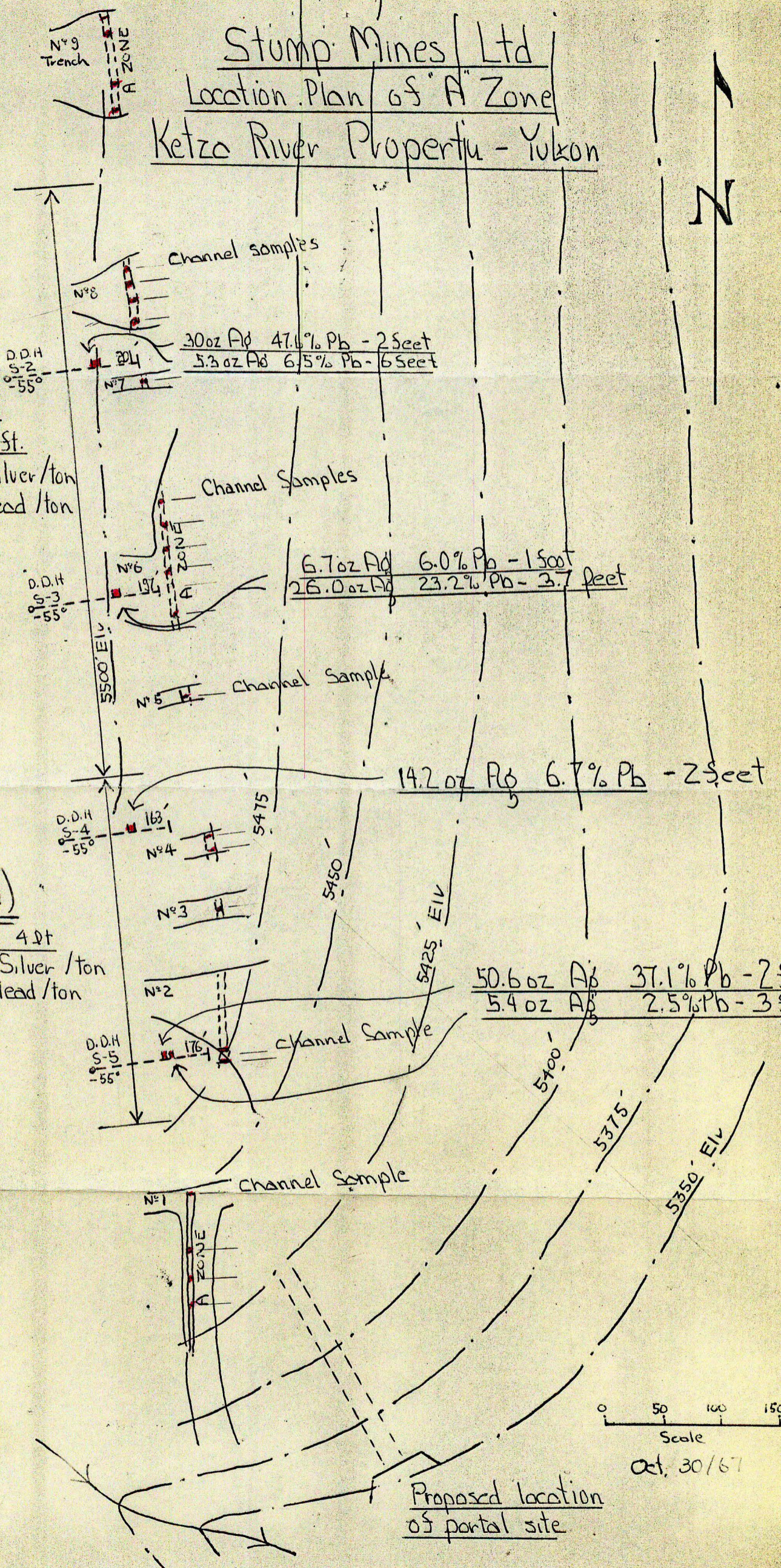


SHOOT N°2

510 St by 4 St.
25.6 oz Silver/ton
23.8 % lead/ton

SHOOT N°1

300 St by 4 St
23.8 oz Silver/ton
19.5 % lead/ton



Oct. 30/67

Proposed location of portal site

OCT 18 1967

Area

October 17, 1967 105 F

attach to

previous
only

From: Leon La Prairie, Managing Director
Suite 1102, 347 Bay Street,
Toronto 1, Ontario.

Re: Stump Mines 'A' Zone Drilling

W.S.R.
K.C.G.
J.H.S.
E.F.
R.D.S.
B.C.B.
P.M.K. ✓
G.W.M.
R.O.M.
C.K.W.
J.B.S.
G.P.R.
K.F.L.
L.B.
E.C.J.

The drill program on the Stump Mines property in the Ketz River area of the Yukon has been completed. The property is located about 35 miles south of Ross River, the nearest town to the Anvil Lead-Zinc-Silver mining complex.

Hole S-2 was drilled at -55° to intersect the A-1 zone about 90 feet vertically below surface between trenches 7 and 8. It encountered the zone between 134.0 and 148.0, a width of 14.0 feet. This represents a true thickness of about 12.0 feet. Three separate veins are present, each separated from the other by argillite. Total recovery from the zone was only 40% and a good sample was not obtained.

In Hole S-2 from 134.0 to 136.0 feet, ground core fragments of massive galena mineralization assayed 30.2 oz Silver and 47.6% Lead. From 136.0 feet to 148.0 feet, galena fragments were found throughout the core, the recovery in this section was not sufficient for an evaluation.

Hole S-3 was drilled at -55° . It is 200 feet southwest along the strike of the zone from Hole S-2, under Trench 6, and also intersected the vein about 90 feet below surface. The vein intersection was from 125.5 to 131.7, a width of 6.2 feet, which represents a true thickness of about 5.5 feet. The average core recovery was over 65%.

In Hole No. 3, from 125.5 to 128.0 feet, galena fragments were scattered throughout the core, the recovery was not sufficient for a true evaluation of the section. From 128 to 131.7, massive galena mineralization assayed 26.0 oz Silver and 23.2% Lead.

Hole S-4 was drilled a further 200 feet southwest along strike from Hole S-3, under Trench 4, and did also intersect the zone 90 feet below surface. Hole S-5 was drilled a further 200 feet southwest from Hole S-4. A total zone length of 600 feet has been drilled.

Samples from Holes No. 4 and 5 are now being assayed for silver, gold, lead and zinc. All samples are of split core.

To September 30th, Stump Mines Ltd. has expended in the order of \$70,000.00 on the Ketz River Project. The results to date are the surface evaluation of the 'A' zone that assayed 24.9 oz. Silver and 22.2% Lead for a strike length of 810 feet over an average width of 4 feet. The diamond drilling completed has established the zone to a vertical depth to justify the next phase to explore the zone further by way of underground development with an adit 150 feet below surface expression of the 'A' zone. The present potential of the zone is the indicated development of 400 tons per vertical foot.

Work has started on preparing the portal site for the adit drive. The adit operation is estimated to cost in the order of \$150,000.00.

OCT 3 1967

SUITE 1102 - 347 BAY STREET
TORONTO 1, ONTARIO

Telephone:
366-0705

attach to previous

October 2, 1967

W.S.M.
K.C.G.
J.H.S.
E.F.
R.D.S.
B.C.B.
P.M.K.
G.W.M.
R.O.M.
C.K.W.
J.B.S.
G.P.R.
K.F.L.
J.L.B.
E.C.J.

From: Stump Mines Ltd. - Leon La Prairie, Managing Director

Re: 'A' Zone Drilling - Diamond Drill Holes 1, 2 & 3

The following is a brief summary of D. D. Holes 1, 2 & 3 to test the 'A' zone that has been systematically sampled on surface and yielded 24.9 oz Silver and 22.2% Lead over an average width of 4.0 feet.

D. D. Hole No. 1

Dip 55°

Hole No. 1 was located 250 feet west of the 'A' zone and drilled to test the zone at midsection at a vertical depth of 200 feet.

The 'A' zone was to be intersected at 240 feet. The hole ended at 222 feet due to loss of core and did not reach the target objective. It is planned to redrill Hole No. 1 by using other equipment.

D. D. Hole No. 2

Dip 55°

Hole No. 2 was located 200 feet north of Hole No. 1 and 120 feet west of the 'A' zone. The hole was drilled to test the zone at a vertical depth of 100 feet.

The 'A' zone was intersected at a drilling depth of 132 feet. The core length from 132 feet to 164 feet is reported to be well mineralized.

The core is at the property and will be sent for assaying at the earliest opportunity. It is estimated that assay results will be available in about ten days.

D. D. Hole No. 3

Hole No. 3 is located in the same section as Hole No. 1 and 120 feet west of the 'A' zone. The hole is being drilled to test the zone at a vertical depth of 100 feet. Drilling of the hole started October 1st and should be completed within three days.

SUITE 1102 - 347 BAY STREET
TORONTO 1, ONTARIO

Telephone:
366-0705

SEP 8 1967

September 7, 1967 105F

W.S.R.
K.C.G.
J.H.S.
E.F.
R.D.S.
B.C.B. ✓
P.M.K.
G.W.M.
R.O.M.
C.K.W.
J.B.S.
G.P.R.
K.F.L.
J.L.B.
E.C.J.

TO: Paul Kavanagh
FROM: Leon La Prairie, P. Eng. - Managing Director
Re: Stump Mines Diamond Drilling

Arrangements are being made with A. Arsenault Diamond Drilling Ltd. for core drilling (A.Q.) of the 'A' zone on the Stump Mines property in the Ketz River area, Yukon.

It is planned to test the downward trend of the 'A' zone which has been systemically sampled on surface for a length of 810 feet, grading 24.9 oz. silver per ton and 22.2% lead, over an average width of four feet.

The program will consist of two or three holes to depths up to 400 feet to establish the true dip prior to underground development.

The drilling is scheduled to start in about ten days.

SUITE 1102 - 347 BAY STREET
TORONTO 1, ONTARIO

Telephone:
366-0705

Telex 02-2773

AUG 18 1967

August 17, 1967

TO: Mr. Paul Kavanagh

FROM: Leon La Prairie

W.S.R.
K.C.G.
J.H.S.
E.F.
R.D.S.
B.C.B.
P.M.K. ✓
G.W.M.
R.O.M.
C.K.W.
J.B.S.
G.P.R.
K.F.L.
L.B.
E.C.J.

As a follow-up to my letter of July with regards to the Stump Mines program on the 'A' zone, the following are the results, as reported by Alan Archer, the Company's consultant, of the work completed to date.

1. The 810 feet of the 'A' zone systematically sampled yielded values of:
24.9 oz. Silver and 22.2% Lead over 4 feet
or
21.2 oz. Silver and 18.4% Lead over 5 feet.
2. The potential of the 'A' zone to a depth of 400 feet is 320,000 tons with a value of \$84.00 per ton.
3. The present indication within the claims held by Stump Mines and Silver Key Mines is that at least 1,000,000 tons can be developed and probably much greater.

A report dated August 14th by Alan Archer of Whitehorse, on the work completed, is available.

Leon
Leon La Prairie, P. Eng.