

*fake group of  
blains*

13/33



August 26, 1956

	W.S.R.	✓
	G.C.A.	
	E.C.S.	✓
✓	E.O.C.	✓
	R.D.S.	
	J.I.K.	
	E.L.D.	
✓	R.W.B.	✓

Mr. E.O.Chisholm,  
1616-44 King St., West,  
Toronto? Ont.

Dear Ted:

The enclosed geochemical map shows the results of the re-visit to this find made originally several weeks earlier by Kulan and party.

The original description sounded interesting but sufficiently so to warrant an examination but indicated some further work would not be unwarranted. Paxton and Sommers went back and did the field work which resulted in the enclosed map.

Evidently further work is required as some interesting conditions are showing up on the edge of the ground investigated.

Outcrops are not plentiful but there are some near enough and these could have been some on a larger scale map. There are outcrops of limestone and what was considered syenite near and the present occurrence was thought to have been a contact effect.

This is the occurrence I have mentioned in a previous communique and questioned the value of bringing it to attention by recording these four claims.

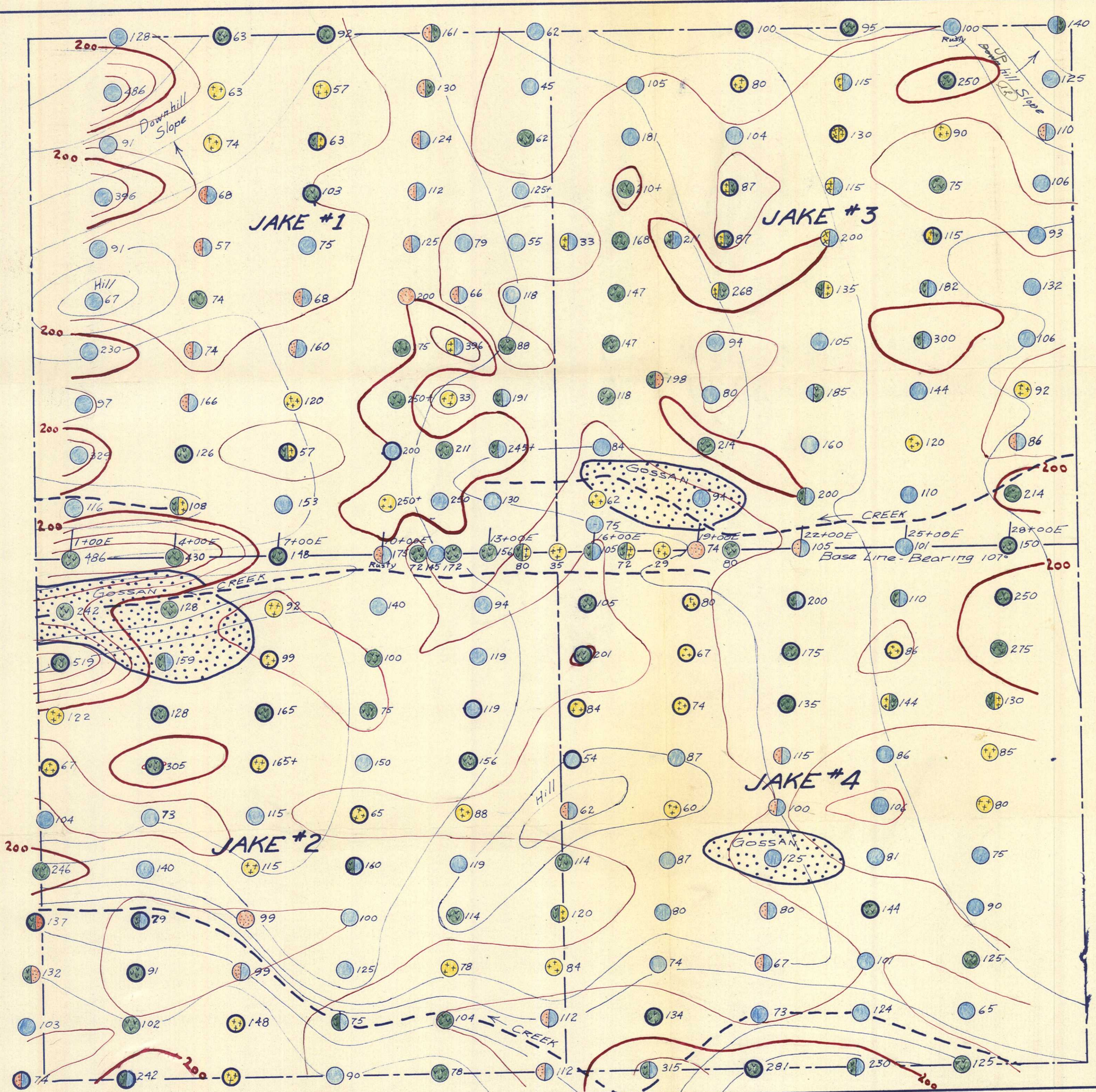
I would appreciate your thoughts on this showing. I would suggest a few more lines of geochemical testing. It is not far out of Vangorda and could be done from the property at small cost. I doubt if it could be handled this year without giving it some priority rating. ~~The four claims staked~~ is not enough protecting so unless you are impressed I will let this one lie until next spring.

Regards.

*Stan*

*Pelley  
River*

*Vangorda*



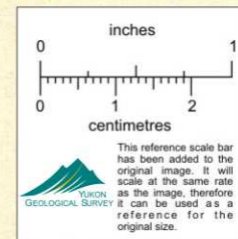
**LEGEND**

- Clay Soil ----- ●
- Sandy " ----- ●
- Humus " ----- ●
- Volc. Ash ----- ●
- Permafrost ----- ○
- Heavy Metal Content  
in PPM. ----- -75
- Topographic Contour ----- 200
- Geochemical " -----

**NOTES**

The JAKE group of claims were staked Aug. 15, 1956  
 The geochemical survey was made from Aug. 5 to 15 1956  
 The base line was cut & chained  
 The cross lines were made by pace and compass. Sampling and pacing were done by E. Sommer and J. Johnson. Sampling was done with a shovel. The samples were dried, powdered and tested by J. Paxton. The location of the claims is approximately 3 miles East of Lake #11

62° 38' N  
 132° 50' W  
 30 miles NZIE of Vancouver camp  
 A.R.



**PROSPECTORS AIRWAYS CO. LIMITED**

**GEOCHEMICAL SURVEY of the JAKE CLAIMS**

SCALE: 1"=200'

Aug. 17, 1956 008925 J. Paxton