

DIAGRAMMATIC CROSS-SECTION ALONG LINE A-B

LEGEND

- 9 Quartz-feldspar porphyry
- 8 Lamprophyre
- 7 Altered diorite and gabbro (greenstone)
- 6 UPPER SCHIST FORMATION (5, 6)
Thin-bedded quartzite, phyllite, graphitic schist; minor thick-bedded quartzite
- 5 Sericite and chlorite schist
- 4 CENTRAL QUARTZITE FORMATION (3, 4)
Thick-bedded quartzite, calcareous quartzite, phyllite, thin-bedded quartzite, graphitic schist
- 3 Highly siliceous, white to buff weathering quartzite; minor grey quartzite and greenstone lenses
- 2 LOWER SCHIST FORMATION (1, 2)
Sericite and chlorite schist; minor graphitic schist
- 1 Graphitic schist, chlorite schist, thin-bedded quartzite, phyllite

- Drift-covered area
- Area of rock outcrop and local float
- Geological boundary (approximate)
- Bedding (dip known, top of bed unknown)
- Lineament from air photographs (in some cases may represent trace of ore vein or fault)
- Post-ore fault or fracture zone (defined, assumed)
- Vein fault (defined, assumed)
- Anticline
- Shaft
- Adit (accessible, caved)
- Prospect pit or open cut
- Mining property or prospect

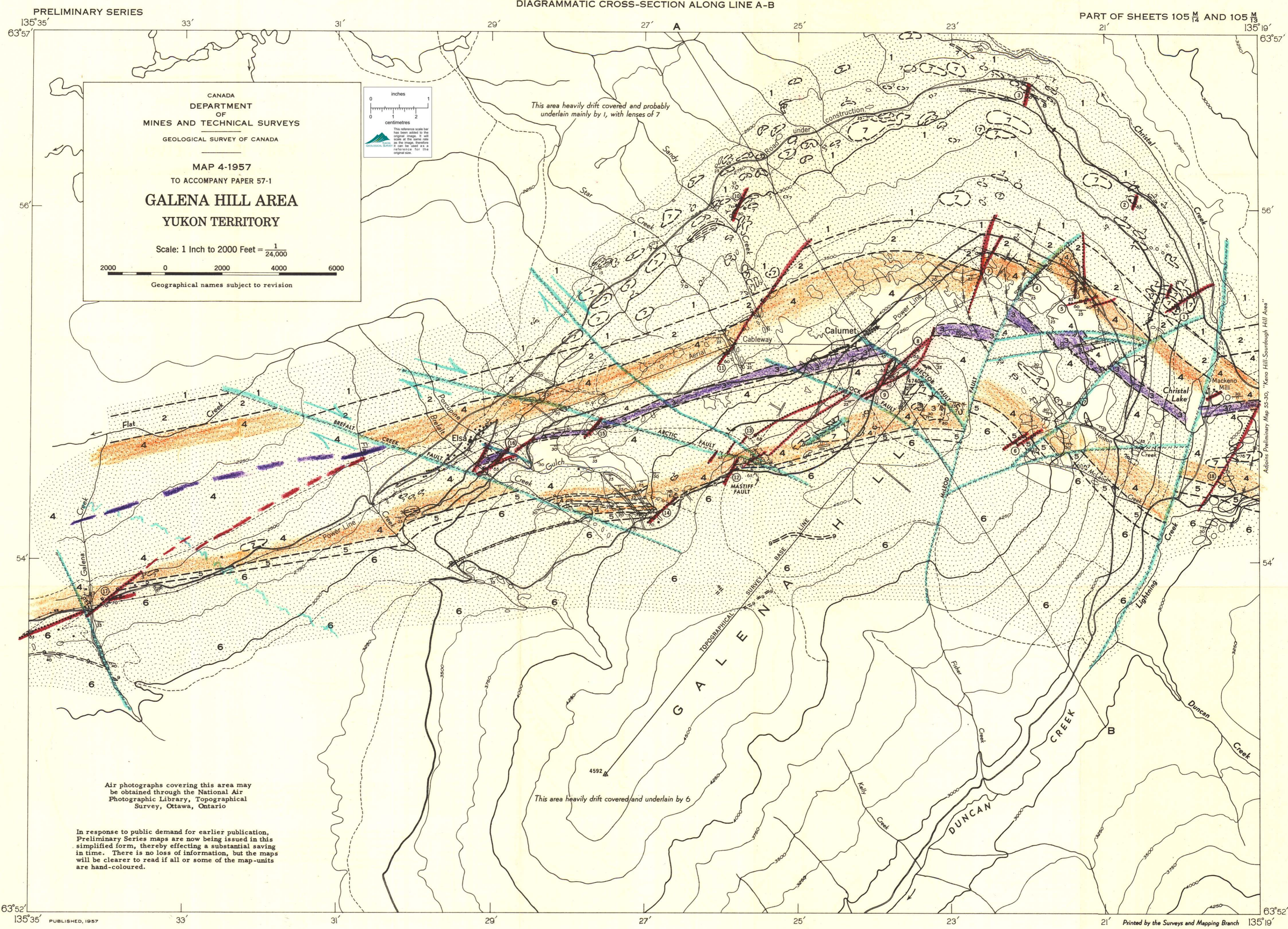
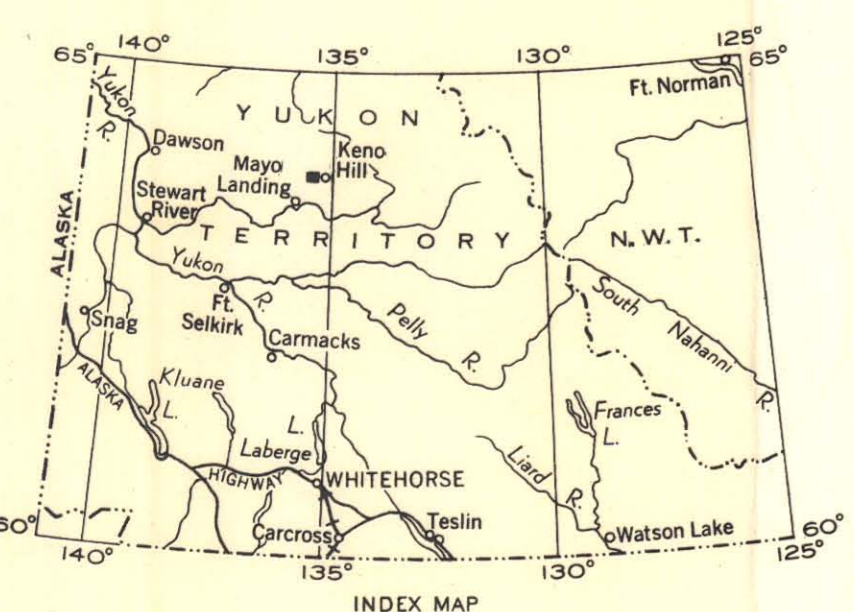
- INDEX TO MINING PROPERTIES AND PROSPECTS
- | | |
|--------------------------|-------------------------------------|
| 1. Tin Can | 10. Cream |
| 2. Bluebird | 11. No Cash |
| 3. Formo (Yukeno) | 12. Arctic and Mastiff (Birmingham) |
| 4. Mackeno (McLeod vein) | 13. Ruby Fraction |
| 5. Mackeno (Sime vein) | 14. Coral and Wigwam |
| 6. Eagle | 15. Dixie |
| 7. Dragon | 16. Elsa |
| 8. Calumet | 17. Silver King |
| 9. Hector | 18. Moth |

Sources of information
 Geological Survey of Canada, Summary Report, 1925 Part A, Map 2096; Preliminary Map 50-20B, Private reports and maps. Field work by R. W. Boyle, 1955

- Road
- Trail or untravelled road
- Cabin, building
- Stream (intermittent)
- Horizontal control point
- Contours (interval 250 feet)
- Height in feet above mean sea-level

Approximate magnetic declination, 34° 15' East

Cartography by the Geological Cartography Unit, 1957



CANADA
 DEPARTMENT OF
 MINES AND TECHNICAL SURVEYS
 GEOLOGICAL SURVEY OF CANADA

MAP 4-1957
 TO ACCOMPANY PAPER 57-1

GALENA HILL AREA
YUKON TERRITORY

Scale: 1 Inch to 2000 Feet = $\frac{1}{24,000}$

2000 0 2000 4000 6000

Geographical names subject to revision

Air photographs covering this area may be obtained through the National Air Photographic Library, Topographical Survey, Ottawa, Ontario

In response to public demand for earlier publication, Preliminary Series maps are now being issued in this simplified form, thereby effecting a substantial saving in time. There is no loss of information, but the maps will be clearer to read if all or some of the map-units are hand-coloured.