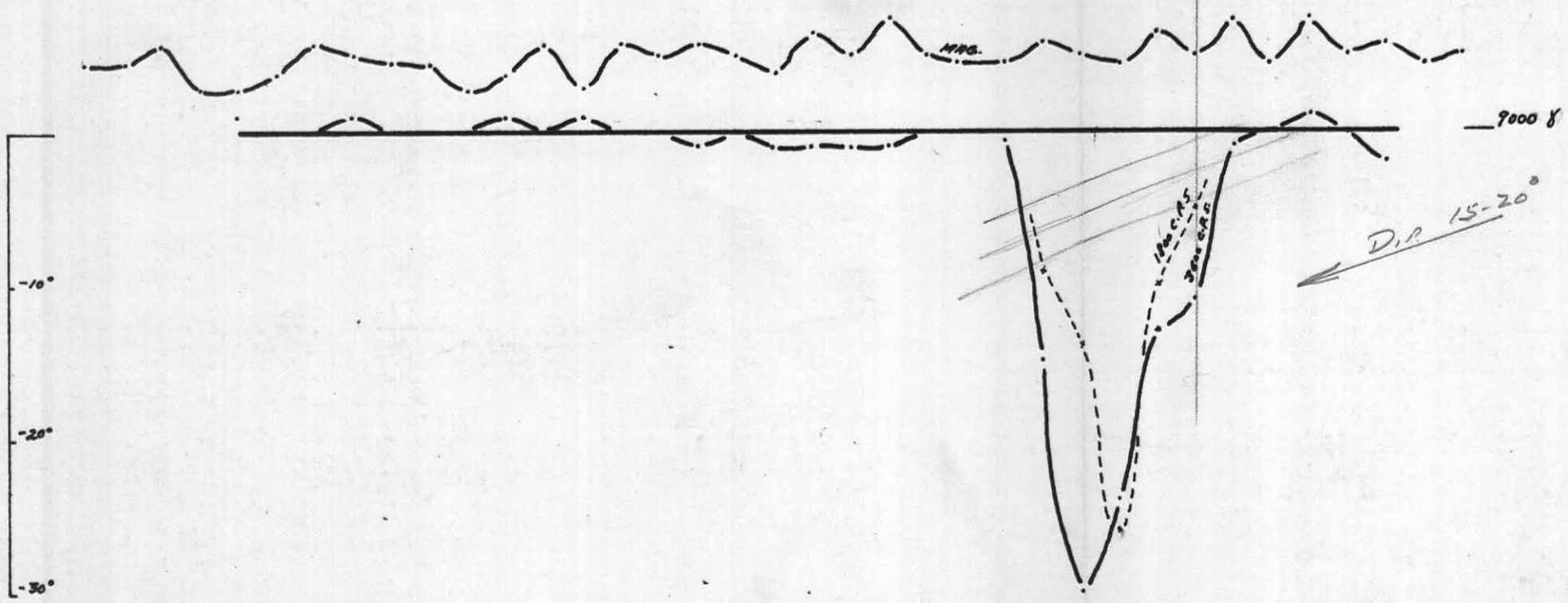
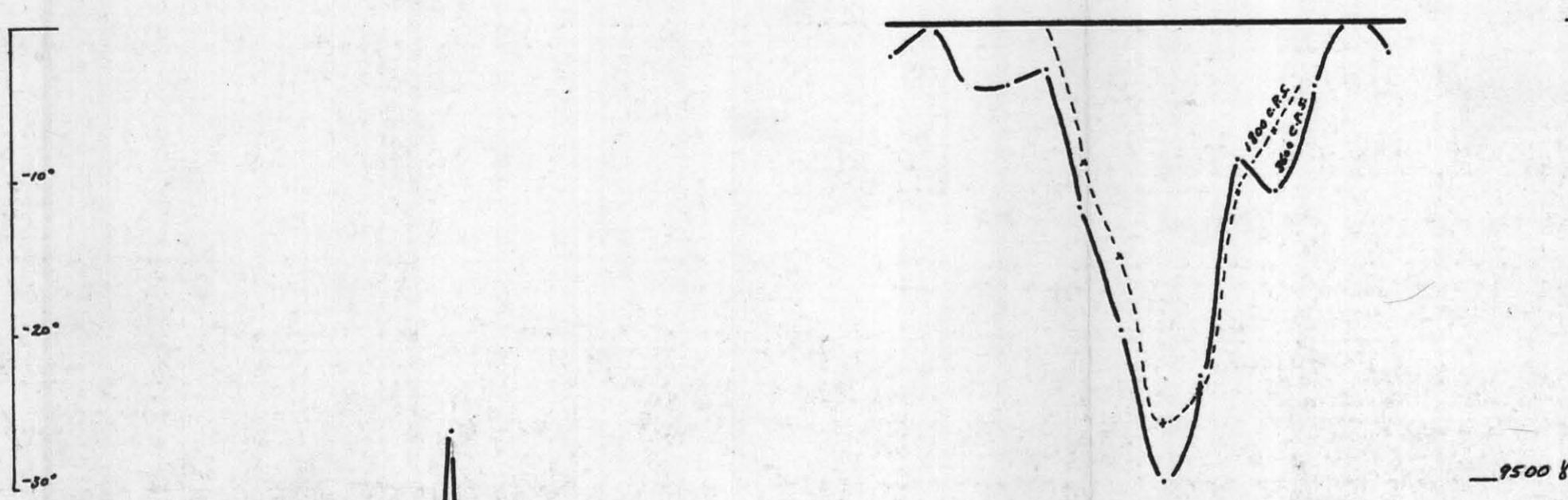


34N 38N 42N 46N 50N 54N 58N

9500 Y

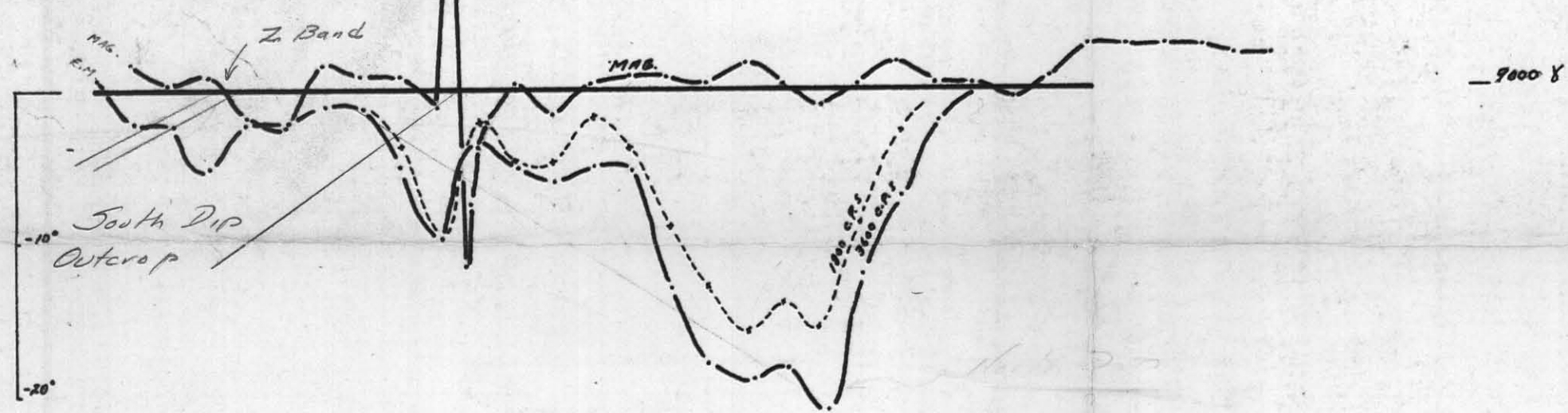


L-138W



DIP 30° EAST

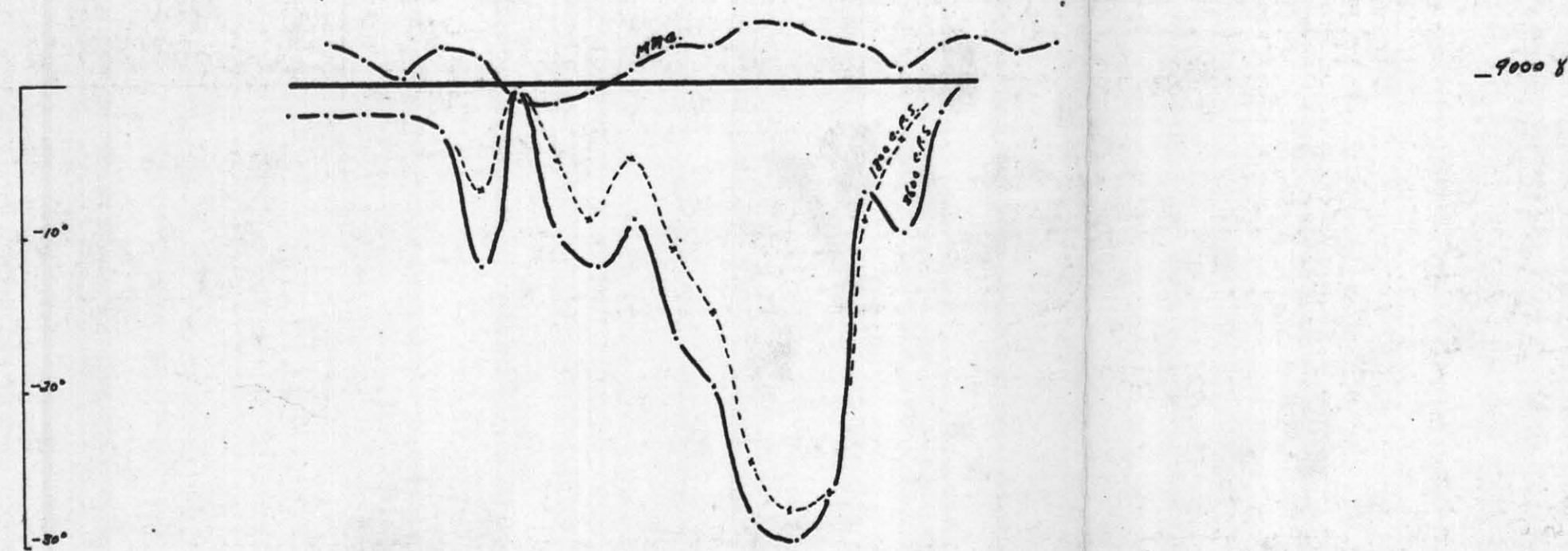
L-133W



9500 Y

9500 Y

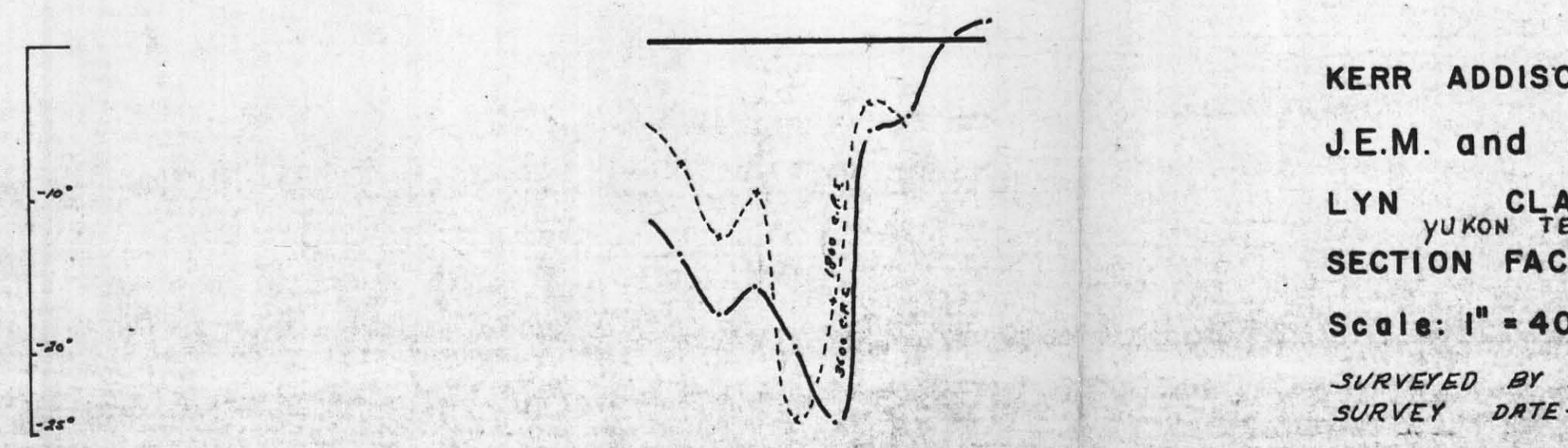
L-82W



9500 Y

9500 Y

L-77W



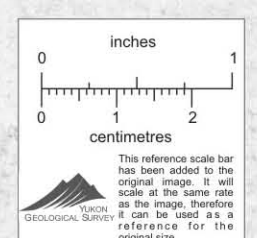
L-74+50W

KERR ADDISON MINES LTD.
 J.E.M. and MAG SURVEY
 LYN CLAIM GROUP
 YUKON TERRITORY
 SECTION FACING N60°W
 Scale: 1" = 400' Mar. 1970

SURVEYED BY F. CHOW and T. LAROSE
 SURVEY DATE - OCT. 1969

J.E.M. Spacing 200 ft.

MAP No. 7



008948

Drawn By J. deRue.