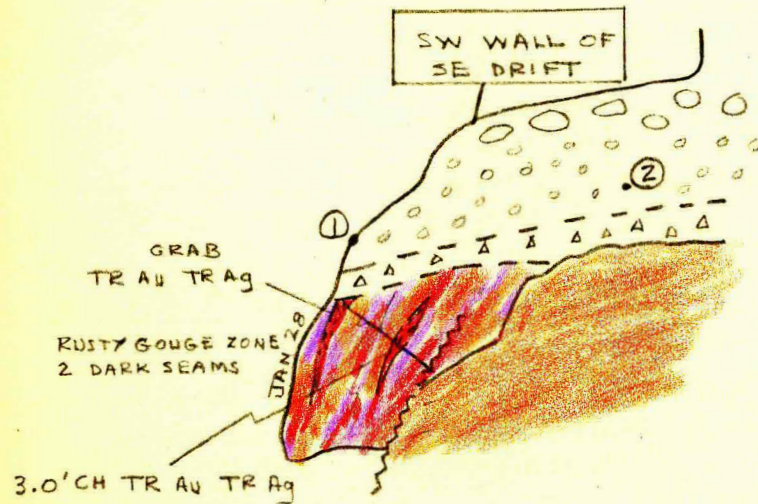


FAINTLY HIGHER GEOCHEMICAL VALUES PROBABLY OF NO SIGNIFICANCE, BUT MAY REFLECT FLOAT TRAINS FROM SURFACE ANOMALY ZONE 300 FT TO EAST.

GEOCHEMICAL ANOMALY CORRESPONDING TO GROUND MORaine AND TILL WITH SPHALERITE AND GALENA.



(SHAFT #1, AREA "A")

⑤ SOIL SAMPLE SITE
(32' TO BEDROCK)

A.E. AHO

008993