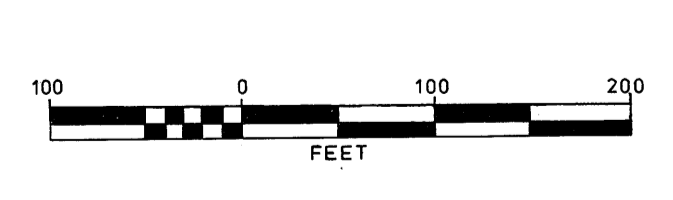


- LITHOLOGIC UNITS**
- AGE UNKNOWN
- 7 HIGHLY ALTERED BASALTIC (?) DYKE ROCK
- MISSISSIPPIAN (?) - UPPER TRIASSIC (?)
- 6a CALCAREOUS GRAPHIC QUARTZ-MUSCOVITE SCHIST
 - 6b CALC-SILICATE SCHIST, QUARTZ-MUSCOVITE-BIOTITE-CORUNDUM SCHIST, BIOLACITE MARBLE
- MISSISSIPPIAN (?)
- 5a VARIABLY PYRITIC AND PYRRHOTITIC PELITIC SCHIST
 - 5b LOCALLY PYRITIC, GRAPHIC QUARTZ-MUSCOVITE SCHIST
 - 5c FINE-GRAINED ANDESITIC TO RHYODACITIC VOLCANIC FLOWS AND ASSOCIATED VOLCANICLASTICS
 - 5d "DISTAL-TYPE" MASSIVE TO THINLY-BANDED PYRITE- AND SPHALERITE-RICH SULPHIDE LENSES
- MISSISSIPPIAN (?)
- 4a MASSIVE TRACHYTE/RHYOLITE
 - 4b COARSE-GRAINED RHYOLITIC AGGLOMERATE OR BRECCIA
 - 4c VARIABLY PYRITIC QUARTZ-ALKALI FELDSPAR-MUSCOVITE SCHIST (ACID TUFF)
 - 4d "PROXIMAL-TYPE" MASSIVE AND BANDED SULPHIDE LENSES
- AGE UNKNOWN - UPPER PALEOZOIC
- 3 UNDIFFERENTIATED ASSEMBLAGE OF SERPENTINITES, QUARTZ-FELDSPAR-CORDIERITE SCHIST, AND CHLORITE-TALC-ACTINOLITE SCHIST
- LOWER DEVONIAN - LOWER MISSISSIPPIAN
- 2a FINE-GRAINED LIMY DOLOMITE
 - 2b VARIABLY CALCAREOUS AND CARBONACEOUS ORTHOQUARTZITE
 - 2c FINE-GRAINED GRAPHIC QUARTZ-MUSCOVITE SCHIST
- UPPER CAMBRIAN - ORDOVICIAN
- 1 LIMY PHYLITE AND MINOR CALC-SILICATE SCHIST

- SYMBOLS**
- 14 ROCK OUTCROP (WITH STATION NUMBER)
 - B-2 SUBCROP (STATION WITH CAIRN)
 - GEOLOGIC CONTACT (DEFINED, ASSUMED)
 - THRUST FAULT (DEFINED, ASSUMED - TEETH ON UPPER PLATE)
 - S₁ METAMORPHIC FOLIATION (VERTICAL, INCLINED)
 - MESOSCOPIC F₁ FOLD AXIS OR MINERAL ALIGNMENT
 - S₂ METAMORPHIC FOLIATION (VERTICAL, INCLINED)
 - MESOSCOPIC F₂ FOLD AXIS OR MINERAL ALIGNMENT
 - S₃ METAMORPHIC FOLIATION (VERTICAL, INCLINED)
 - MESOSCOPIC F₃ FOLD AXIS OR MINERAL ALIGNMENT
 - LINEAR ELEMENT OF UNCERTAIN AGE
 - MACROSCOPIC F₁ FOLD AXIS (APPROX. TRACE, PLUNGE DIRECTION)
 - MACROSCOPIC F₂ FOLD AXIS (APPROX. TRACE, PLUNGE DIRECTION)
 - MACROSCOPIC F₃ FOLD AXIS (APPROX. TRACE, PLUNGE DIRECTION)



CYPRUS ANVIL MINING CORPORATION
 MM/JJ PROPERTY 009012
 DETAILED GEOLOGY & DRILL HOLE LOCATIONS
 NTS 105 F 7 SCALE: 1 IN=100 FT JAN, 1977 DRAWN BY: JKM