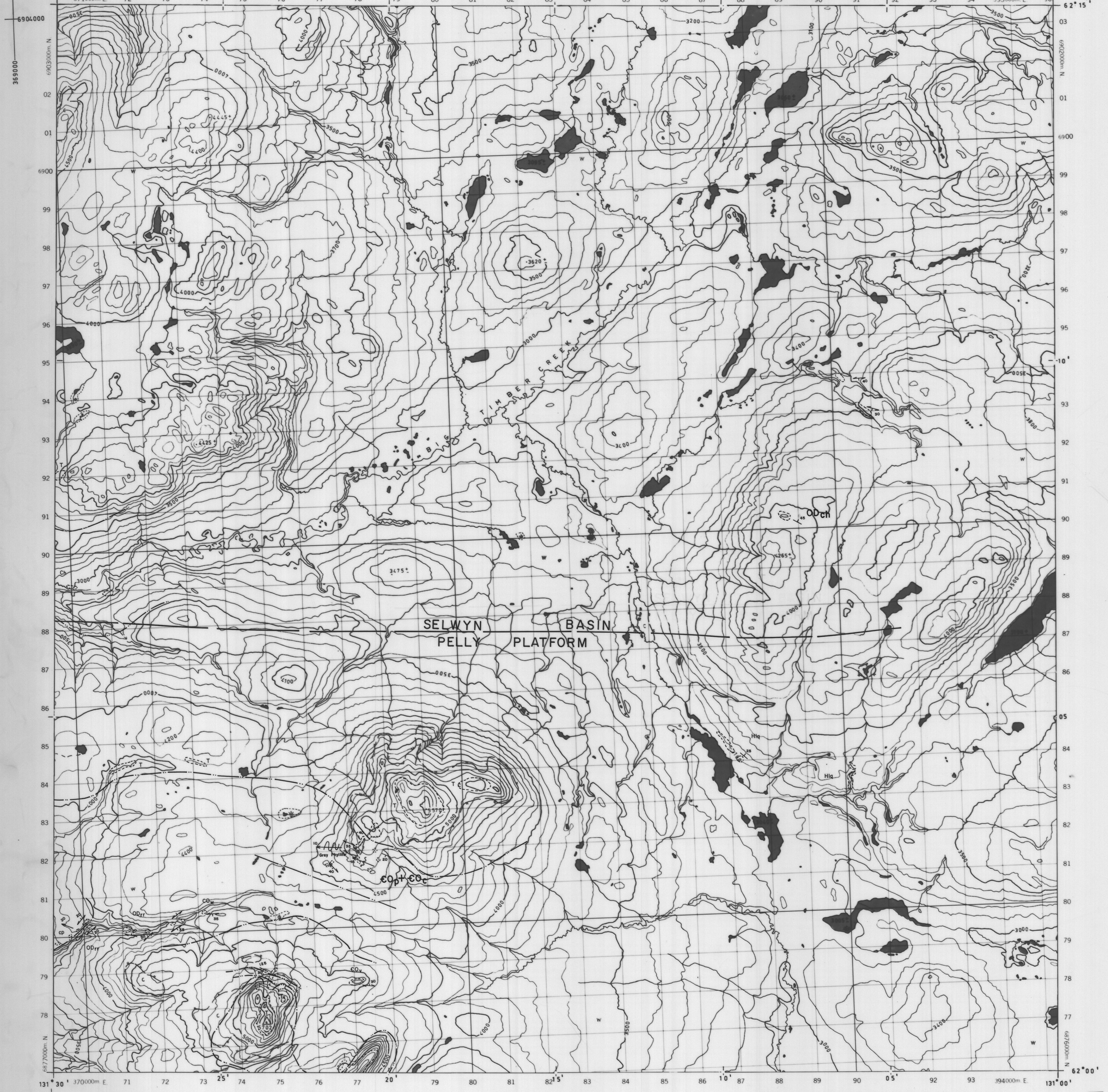


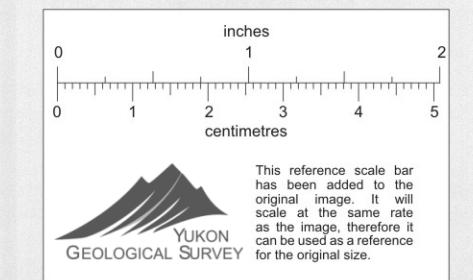
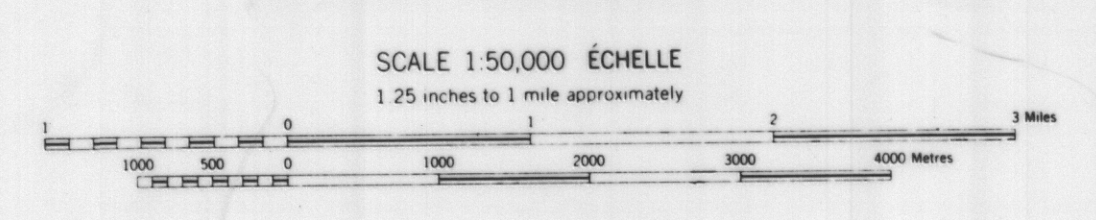
ADVANCE PRINT CANADA ÉPREUVE PRÉLIMINAIRE 105 J/3



PRODUCED BY SURVEYS AND MAPPING BRANCH,  
DEPARTMENT OF ENERGY, MINES AND RESOURCES,  
OTTAWA, 1971, FROM PHOTOGRAPHS TAKEN IN 1968.

YUKON TERRITORY

ÉTABLI PAR LA DIRECTION DES LEVÉS ET DE LA  
CARTOGRAPHIE, MINISTÈRE DE L'ÉNERGIE, DES  
MINES ET DES RESSOURCES, OTTAWA, EN 1971,  
D'APRÈS DES PHOTOGRAPHIES PRISES EN 1968.



CYPRUS ANVIL MINING CORPORATION	
MACMILLAN PROJECT	
REGIONAL GEOLOGY MAP	
009044	
REVISED: GEOLOGY BY: W. ROBERTS & D. KILBY	NTS: 105-F-16, G-13, 14, 15 J-2, 3, 4 DRAWN BY: C. L. CORY K-1 DATE: FEBRUARY 1978