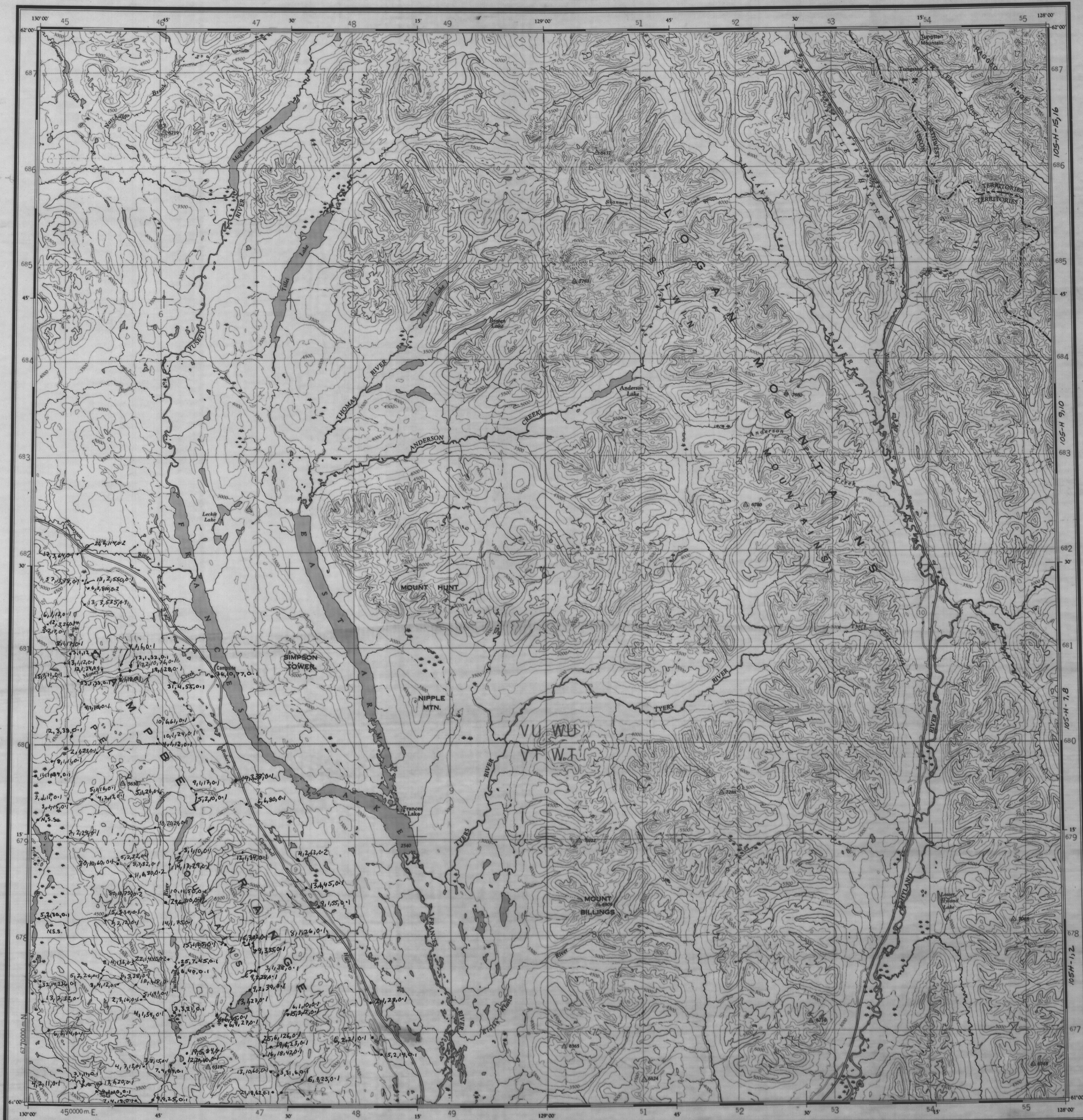


NATIONAL TOPOGRAPHIC SERIES CANADA THIRD EDITION 4 SHEET 105 H



Military users, refer to this map as: Série 4002 Série 105 H Carte 105 H 4^e Édition
 Références de la carte pour usage militaire

GRASS LAKES
 Heavy Metals
 -35 +60 IP, Oxalic Leach
 Cu, Pb, Zn, Ag
 (ppm)

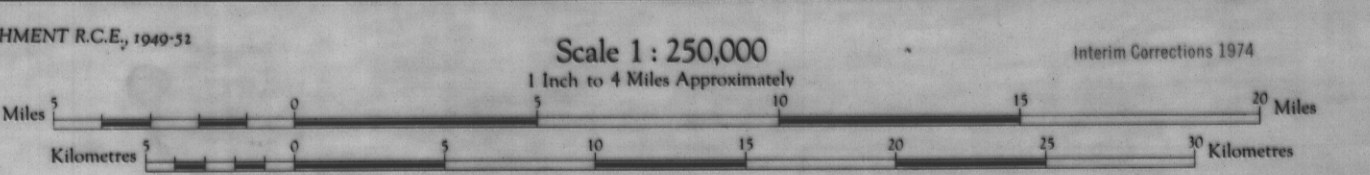
U.T.M. ZONE	18 Q	TRANSVERSE METER	18 Q
EASTING	500000	NORTHING	5000000

TEN THOUSAND METRE
 UNIVERSAL TRANSVERSE MERCATOR GRID
 ZONE 8

THE DECLINATION OF THE COMPASS NEEDLE, 1951:
 Aerial photographs by R.C.A.F., 1949.
 Edition 1960/1961
 Transverse Mercator Projection

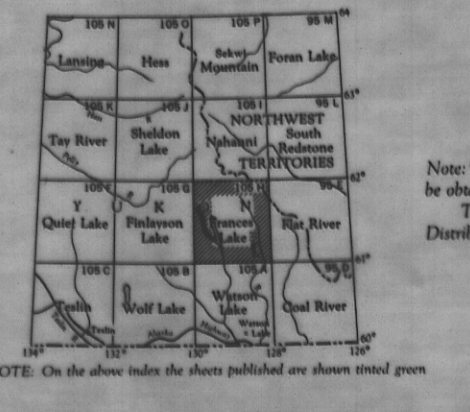
REFERENCE

Symbol	Description
—	Road, Hard Surface, All Weather
- - -	Road, Soft Surface, All Weather
- · - · -	Road, Soft Surface, Seasonal
- · - · -	Road, Soft Surface, Temporary
- · - · -	Road, Soft Surface, Seasonal
- · - · -	Road, Soft Surface, Temporary
- · - · -	Road, Soft Surface, Seasonal
- · - · -	Road, Soft Surface, Temporary



REFERENCE

—	Tramway
—	Power Line
—	Telephone Line
—	Gas Line
—	Water Main
—	Drainage
—	Canal
—	Navigation Light
—	Obelisk
—	Monument
—	Well
—	Water Tower
—	Windmill
—	Windmill
—	Windmill
—	Windmill



Note: Copies of this map required for official purposes may be obtained from the Army Survey Dept. (ASD), Ottawa.
 The general public may obtain copies from the Map Distribution Office, Dept. of Mines and Technical Surveys, Ottawa.

009072

FRANCIS LAKE
 YUKON TERR.—NORTHWEST TERR.
 SHEET 105 H
 EDITION 4