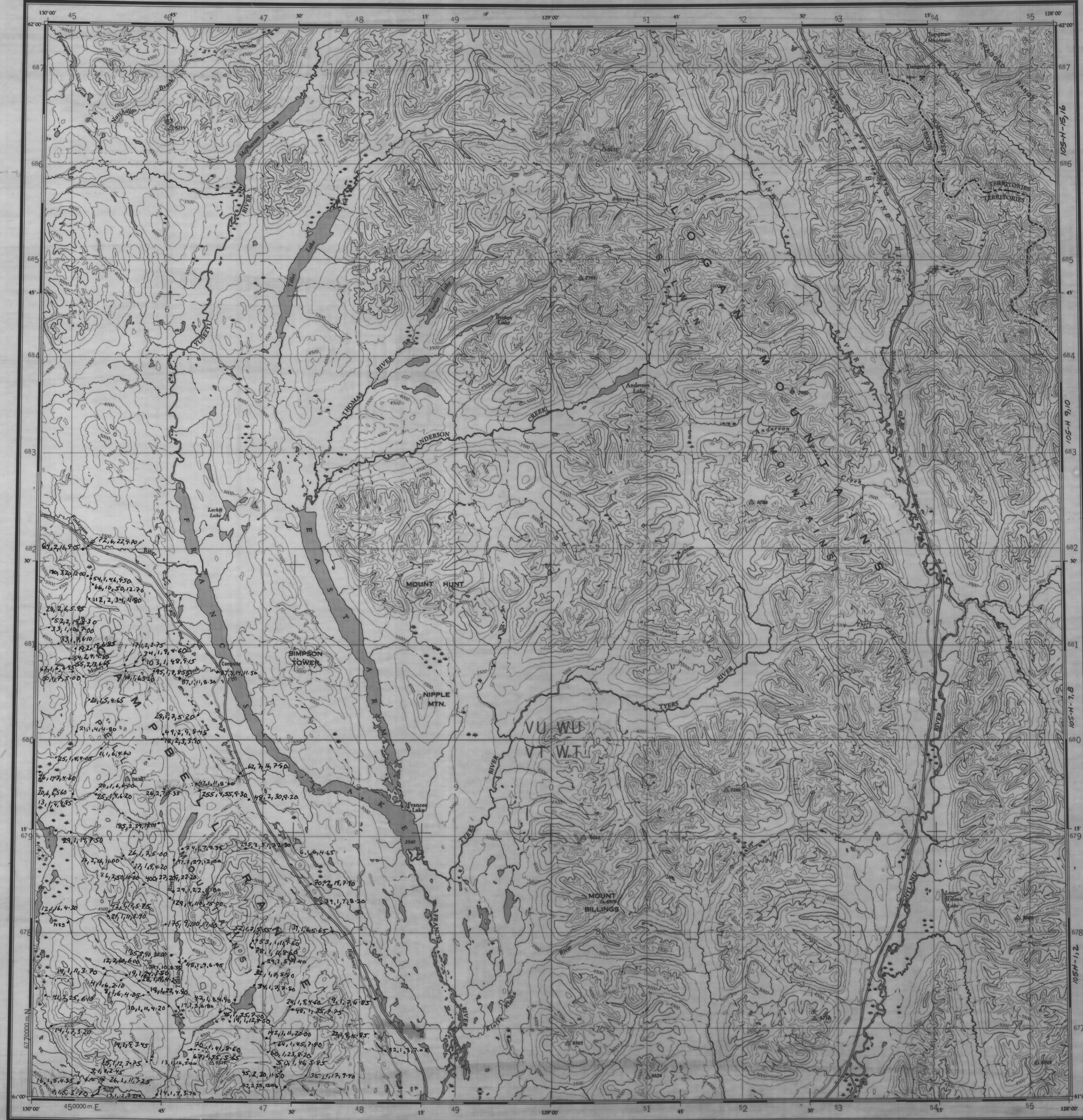


NATIONAL TOPOGRAPHIC SERIES CANADA THIRD EDITION SHEET 105 H



Military users, refer to this map as SHEET 105 H, 4th Edition. Références de la carte pour usage militaire.

GRASS LAKES
HEAVY METALS
REGULAR (-35+60 IP)
Cu Mo As Fe

UTM ZONE	18Q	50
EASTING	500000	000000
NORTHING	6000000	000000

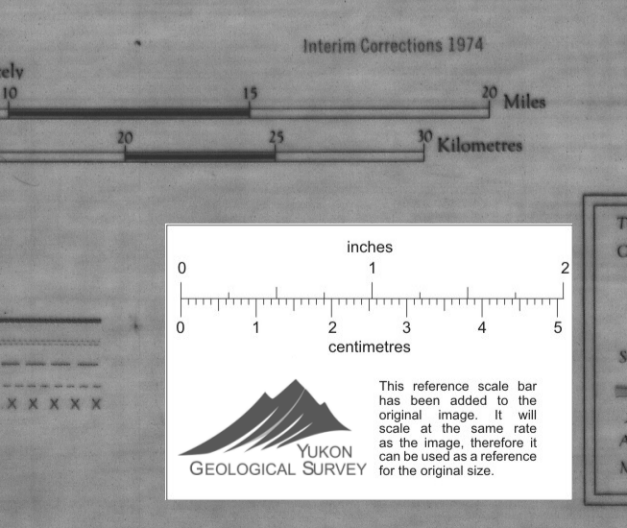
THE DECLINATION OF THE COMPASS NEEDLE, 1951.
Stereographic, compiled, drawn and printed by the ARMY SURVEY ESTABLISHMENT R.C.E., 1949-51.
Aerial photographs by R.C.A.F., 1949.
Edition 3 printed 1964.
Transverse Mercator Projection.

REFERENCE

Bound. - International	Bound. - National
Bound. - State	Bound. - Local
Bound. - Indian	Bound. - Other

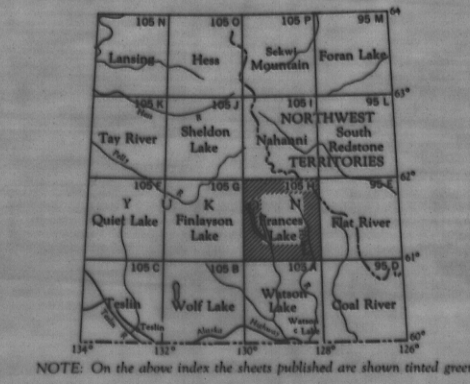
ROADS - ROUTES

ROADS - ROUTES	RAILWAYS
RAILWAYS	RAILWAYS
RAILWAYS	RAILWAYS



REFERENCE

Transposition	Spot Elevation
Contour Interval	Spot Elevation
Contour Interval	Spot Elevation



NOTE: Copies of this map required for official purposes may be obtained from the Army Survey Estab. (ASSE), Ottawa.

009074

FRANCES LAKE
YUKON TERR.-NORTHWEST TERR.

SHEET 105H
EDITION 4