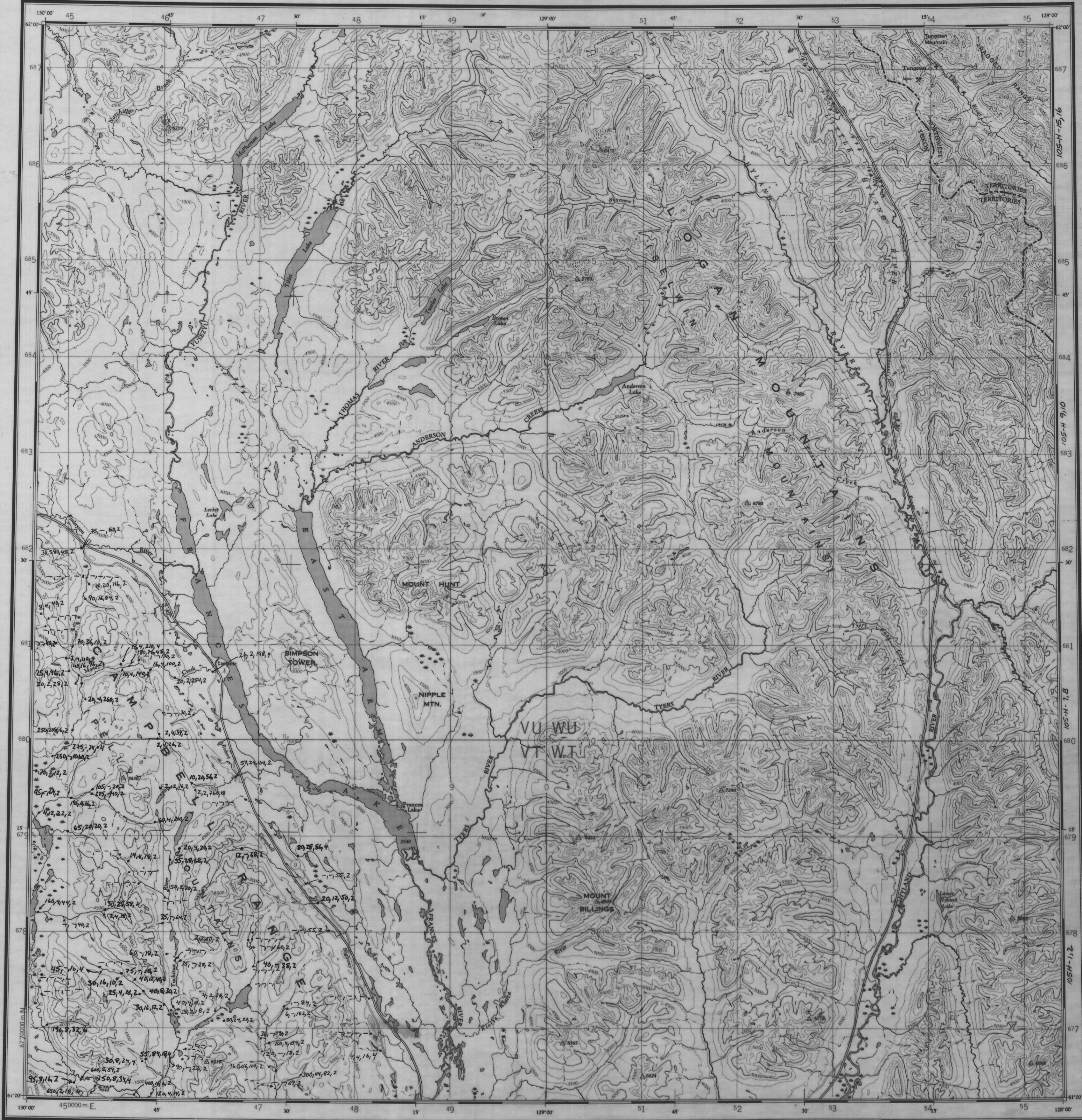


NATIONAL TOPOGRAPHIC SERIES CANADA THIRD EDITION 4 SHEET 105 H



Military users, refer to this map as: 105 H 1:250,000  
Référence de la carte pour usage militaire: 105 H 1:250,000

Date Unavailable

# 987 has duplicate results.

GRASS LAKES  
HEAVY METALS (-60 00)  
W.S. C. McE

UTM ZONE	TRANSFORMATION	SCALE
VU WU	WT	0 5
WT	WT	0 5

TEN THOUSAND METRE  
UNIVERSAL TRANSVERSE MERCATOR GRID  
ZONE 9

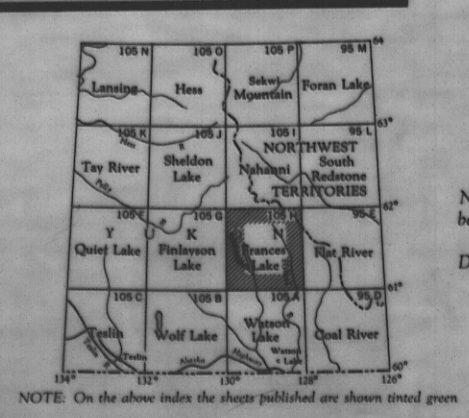
THE DECLINATION OF THE COMPASS NEEDLE, 1991  
Some of the declination values are given in the vicinity of the map sheet. The declination values are given in degrees and minutes.

Source: compiled, drawn and printed by the ARMY SURVEY ESTABLISHMENT S.C.E., 1990-91  
Aerial photography by R.C.A.F., 1960  
Reference: 1:250,000  
Transverse Mercator Projection

Symbol	Description
—	Highway
—	Trunk Road
—	Other Road
—	Footpath
—	Boundary
—	Province or Territory
—	County or District
—	Parish, Indian, Village, Park, etc.

Scale 1:250,000  
1 Inch to 4 Miles Approximate  
Kilometres 0 5 10 15 20 25 30 35 40 45 50  
Miles 0 5 10 15 20 25 30 35 40 45 50

Symbol	Description
—	Highway
—	Trunk Road
—	Other Road
—	Footpath
—	Boundary
—	Province or Territory
—	County or District
—	Parish, Indian, Village, Park, etc.



Note: Copies of this map required for official purposes may be obtained from the Army Survey Est. (ASD), Ottawa.  
The general public may obtain copies from the Map Distribution Office, Dept. of Mines and Technical Surveys, Ottawa.

009077