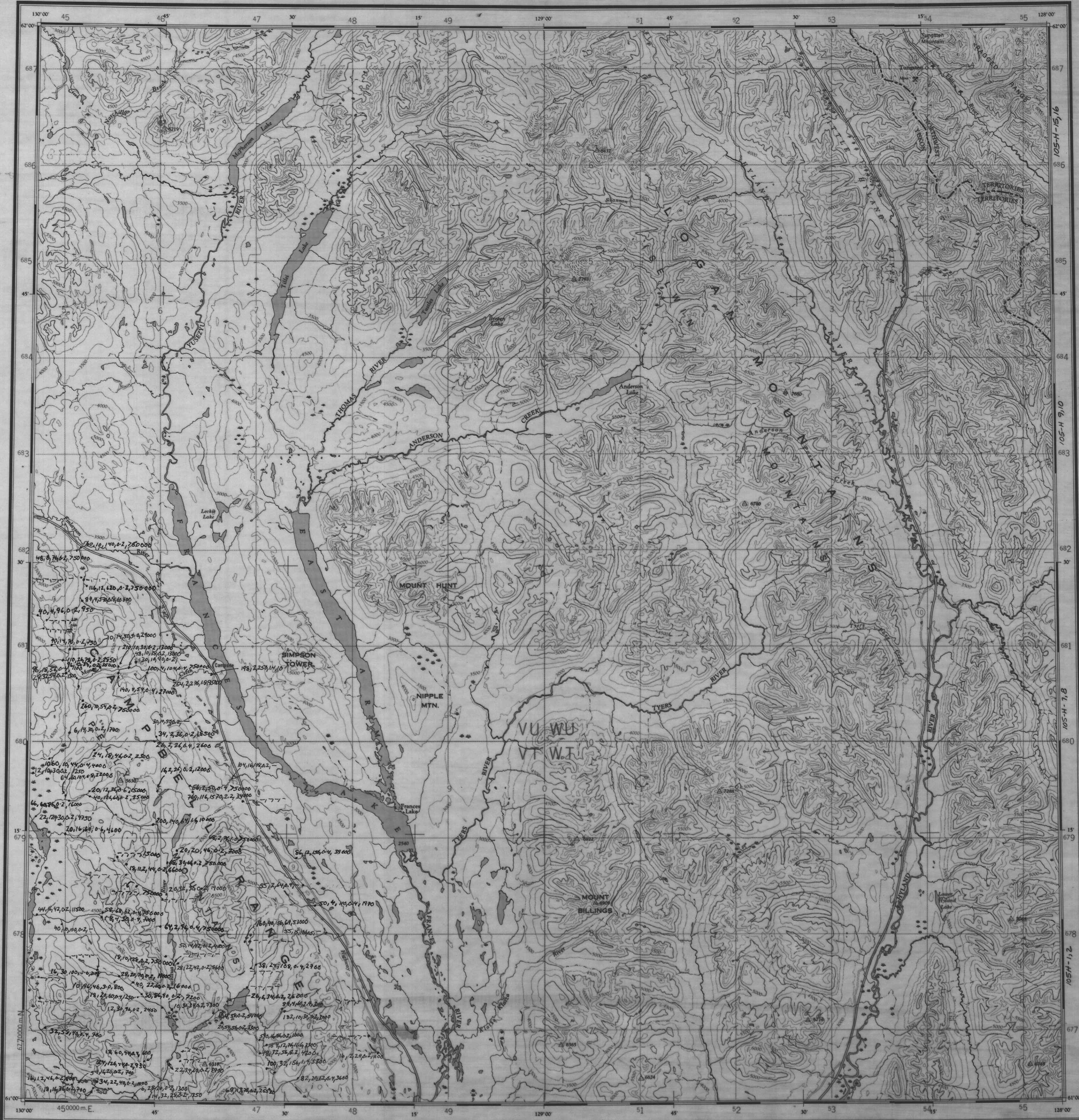


NATIONAL TOPOGRAPHIC SERIES CANADA THIRD EDITION 4 SHEET 105 H



Refer to	105 H	105 H
105 H	105 H	105 H
105 H	105 H	105 H

Date Unavailable
90

GRASS LAKES
HEAVY METALS (-60 MN)
Cu Pb Zn Ag Ba

105 H	105 H	105 H	105 H
105 H	105 H	105 H	105 H
105 H	105 H	105 H	105 H

TEN THOUSAND METRE
UNIVERSAL TRANSVERSE MERCATOR GRID
ZONE 9

THE DECLINATION OF THE COMPASS NEEDLE, 1951

The declination of the compass needle at any place along a meridian is the difference given in this table. At other places the declination may be found by interpolation. The declination is given in minutes and seconds. The magnetic declination of the compass needle on January 1, 1951, is shown.

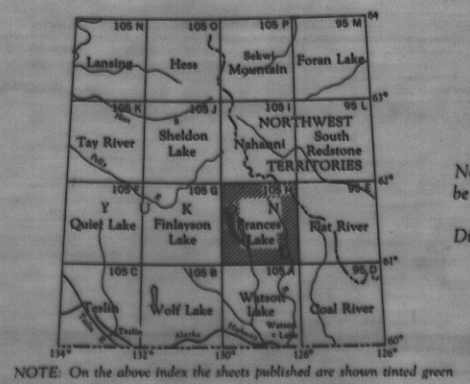
REFERENCE

105 H	105 H	105 H	105 H
105 H	105 H	105 H	105 H
105 H	105 H	105 H	105 H

Scale 1:250,000
1 inch = 4 Miles Approximately

REFERENCE

105 H	105 H	105 H	105 H
105 H	105 H	105 H	105 H
105 H	105 H	105 H	105 H



FRANCES LAKE
YUKON TERR.—NORTHWEST TERR.

SHEET 105 H
EDITION 4

009078