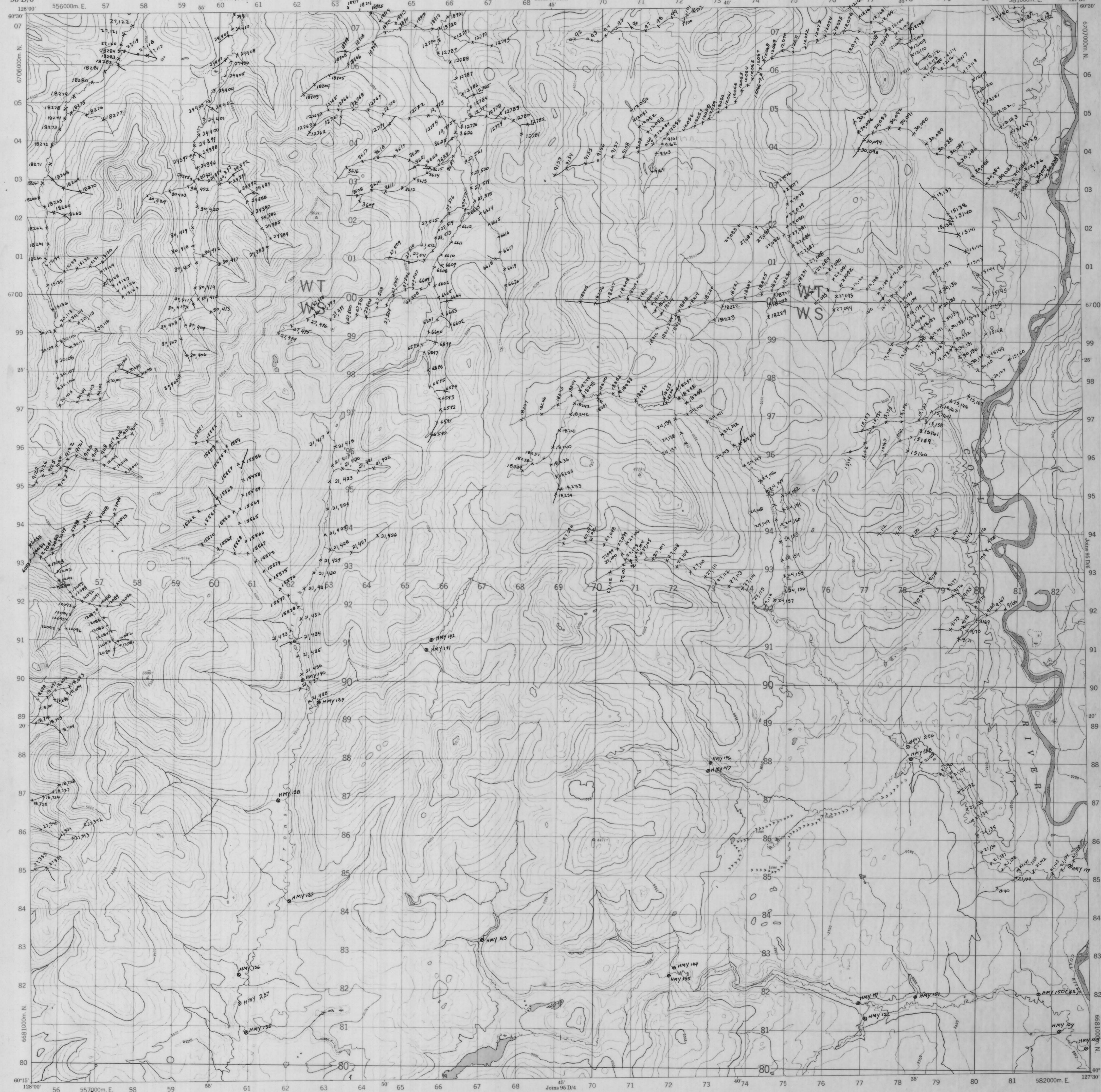
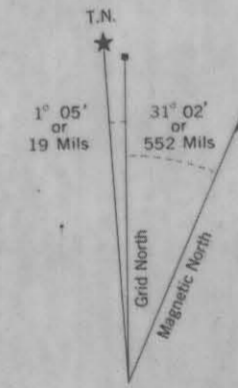
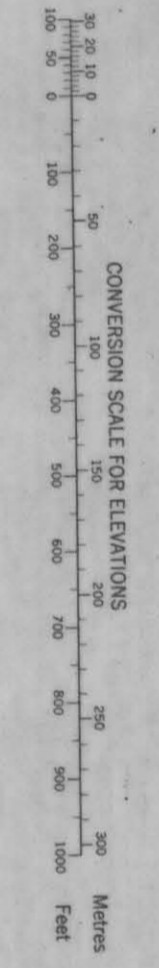


COMPUTER MAP SIZE 1722x 1114.4

PROVISIONAL MAP CANADA EDITION 1 CARTE PROVISOIRE



Refer to this map as: 95-D/5 EDITION 1 METRE SERIES A 772



The diagram only to show approximate values. APPROXIMATE MEAN DECLINATION 1966. TRUE DECLINATION 1960. Annual change decreasing 5.3'

ONE THOUSAND METRE UNIVERSAL TRANSVERSE MERCATOR GRID ZONE 9

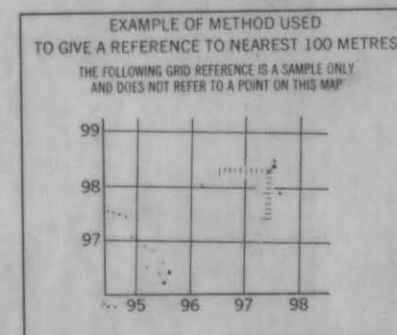
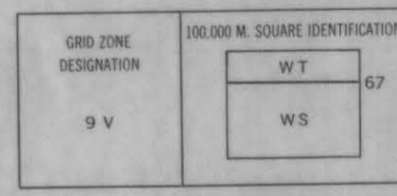


Table with 4 columns: REFERENCE POINT, CHECKED, and two unlabeled columns. It lists various points and their coordinates.

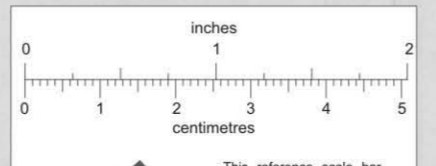
009204

RECE GEOCHEM - 1980

Sample Locations

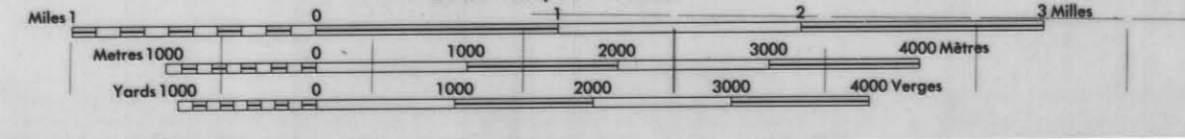
Scale 1:50,000

Published 1980 by the SURVEYS AND MAPPING BRANCH, DEPARTMENT OF ENERGY, MINES AND TECHNICAL SERVICES, from aerial photographs taken in 1960-1961. First survey 1955 and 1960. Printed 1980.



ACLAND CREEK YUKON TERRITORY

Scale 1:50,000 Échelle



This Provisional Map is equivalent to a standard map in measure of content.

Cette carte provisoire équivaut à une carte régulière en mesure de contenu.

Échelle en 1980, par la DIRECTION DES LEVÉS ET DE LA CARTOGRAPHIE.