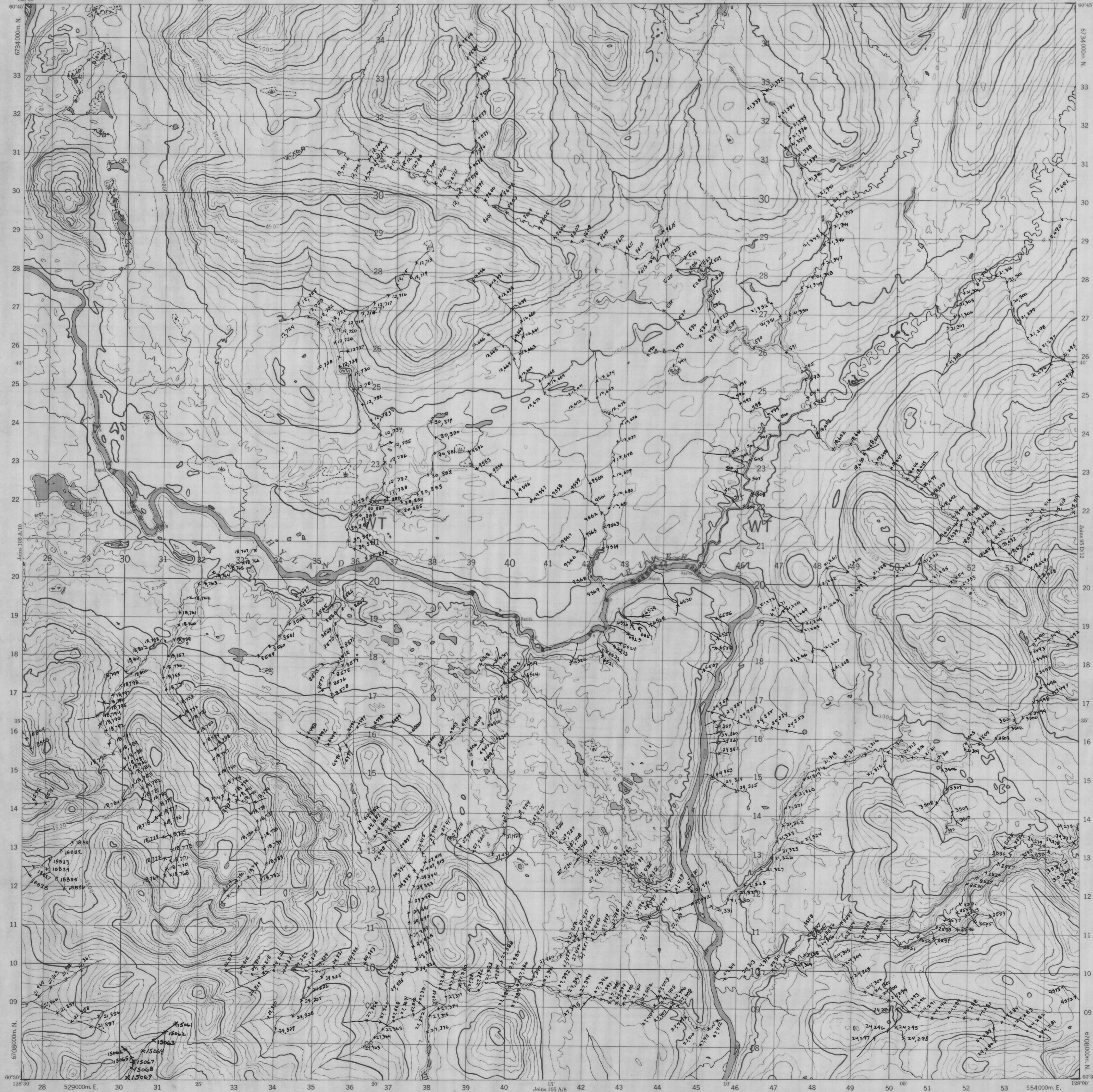
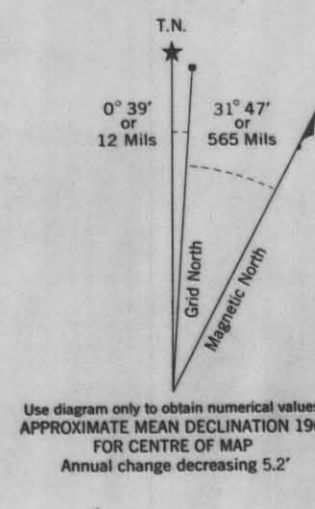
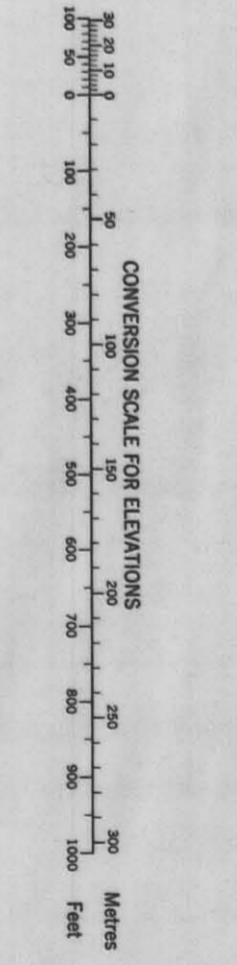


PROVISIONAL MAP 105 A/9 1:50,000 CANADA EDITION 1 CARTE PROVISOIRE 105 A/9

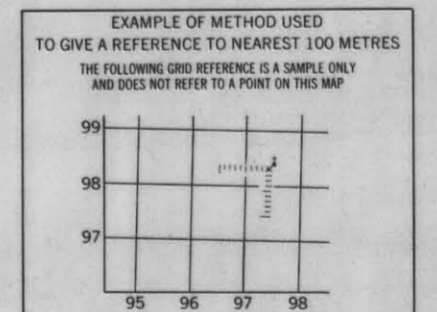


Refer to this map as: 105 A/9 EDITION 1 MCE SERIES A 722



ONE THOUSAND METRE UNIVERSAL TRANSVERSE MERCATOR GRID ZONE 9

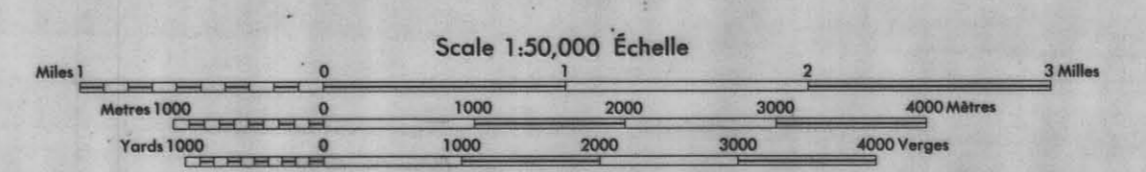
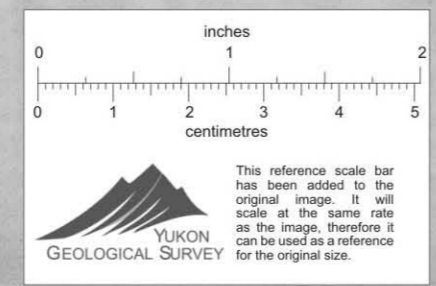
GRID ZONE DESIGNATION	1000 M SQUARE IDENTIFICATION
9V	WT



REFERENCE POINT	CHURCH (see above)	SEE ABOVE
EXAMPLE: Road number on grid line immediately to left of point	97	
EXAMPLE: Road number on grid line immediately below point	96	
EXAMPLE: Road number on grid line immediately to right of point	98	
EXAMPLE: Road number on grid line immediately above point	95	

Produced 1968, by the SURVEYS and MAPPING BRANCH, DEPARTMENT OF ENERGY, MINES AND RESOURCES, Ottawa, Ontario, Canada. Edition of 1968. First Survey 1965.

Copyright maps reproduced from the Map Distribution Office, Department of Energy, Mines and Resources, Ottawa.



This Provisional Map is equivalent to a standard map of accuracy of contour.

Cette carte provisoire équivaut aux cartes régulières au point de vue précision de l'altitude.

Produced 1968, par la DIRECTION DES LEVES et de la CARTOGRAPHIE, BRANCHÉ DE LA GÉOLOGIE, DES MINES et des RESSOURCES, Ottawa, Ontario, Canada. Édition de 1968. Première levée 1965.

AMNAC PROJECT  
GEOCHEM LOCATION MAP

009233

105 A/9  
EDITION 1