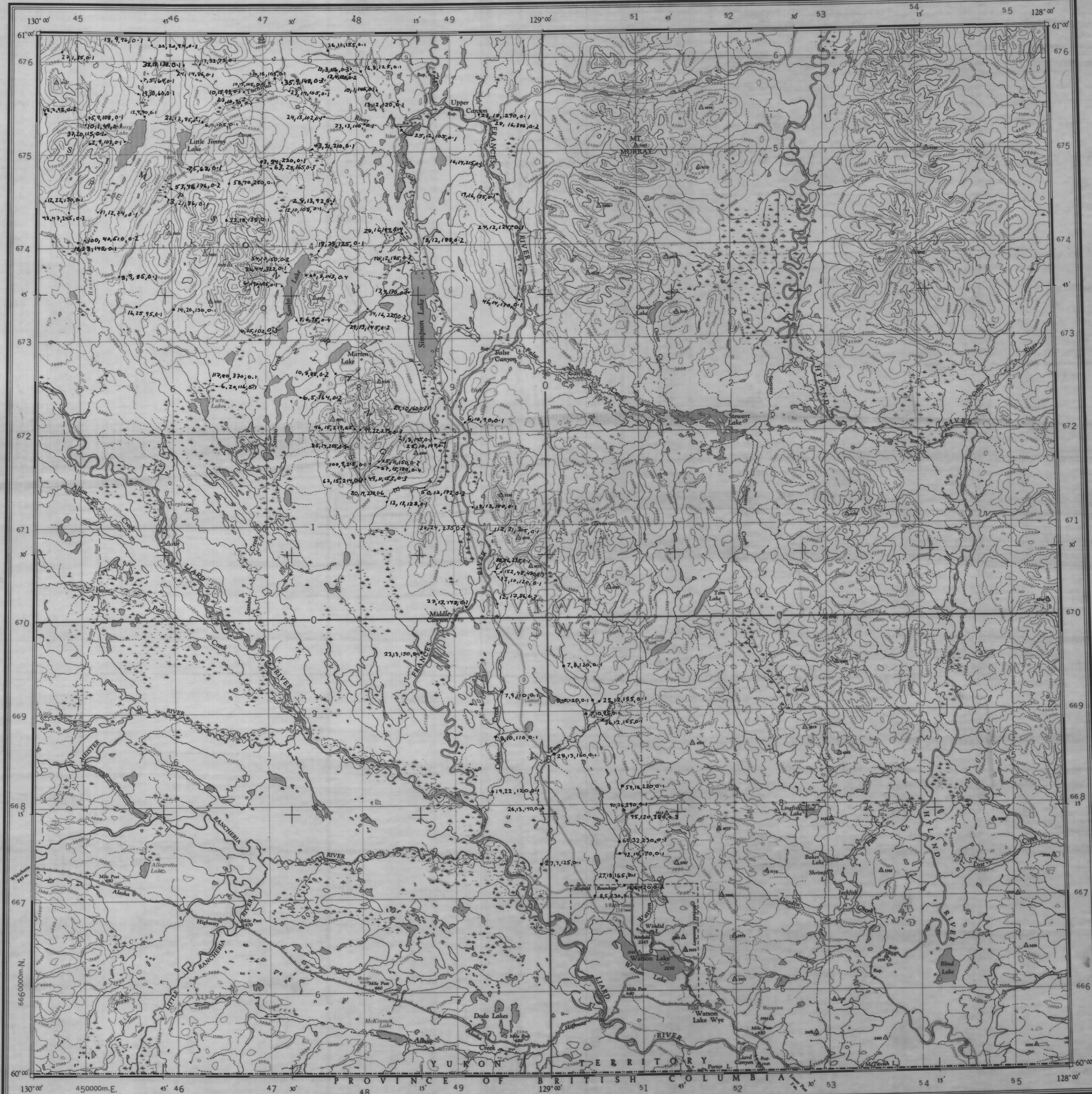


NATIONAL TOPOGRAPHIC SERIES DEPARTMENT OF MINES AND TECHNICAL SURVEYS EDITION 3 SHEET 105 A



Military users refer to this map as: Série 4502 Série 105 A Carte Édition 3 MCT Édition

GRASS LAKES
HEAVY METALS (REGULAR -35x60 IP)
Cu Pb Zn Ag

Table with 2 columns: Scale and Unit. Rows include 1:250,000, 1:50,000, and 1:10,000.

TEN THOUSAND METRE UNIVERSAL TRANSVERSE MERCATOR GRID ZONE 9

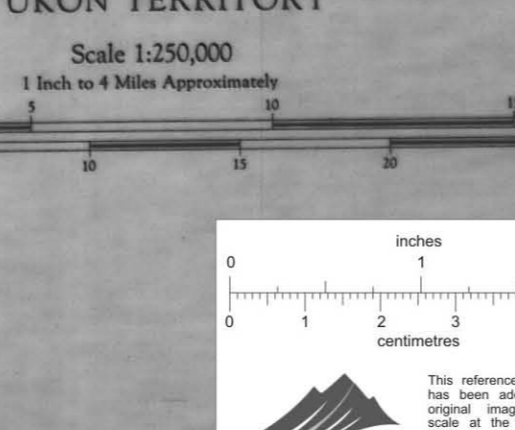
International Meridian Dateline
All Elevations in Feet above Mean Sea Level
Contour Interval 20 Feet
North American Datum 1927

Magnetic Declination 33°35' East at centre of sheet, 1950
The variation of the contour reads in increments of 2 minutes annually

Surveyed, compiled, drawn and printed by the Army Survey Dept. R.C.E. 1949-50
Aerial photography by the C.A.F. 1946
Interim corrections 1979

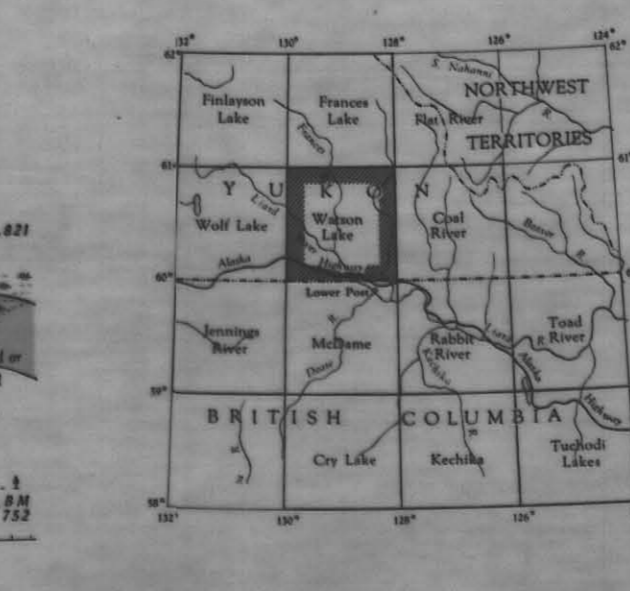
REFERENCE table with 3 columns: Symbol, Name, and Description. Includes symbols for roads, trails, and other features.

ROADS-ROUTES table with 2 columns: Symbol and Name. Includes symbols for paved roads, gravel roads, and trails.



REFERENCE table with 2 columns: Symbol and Name. Includes symbols for water features like rivers, lakes, and streams.

Contours may be obtained from the Map Distribution Office, Department of Mines and Technical Surveys, Ottawa. Corrections provided, 1979



009249
WATSON LAKE Y.T.
SHEET 105 A
EDITION 3