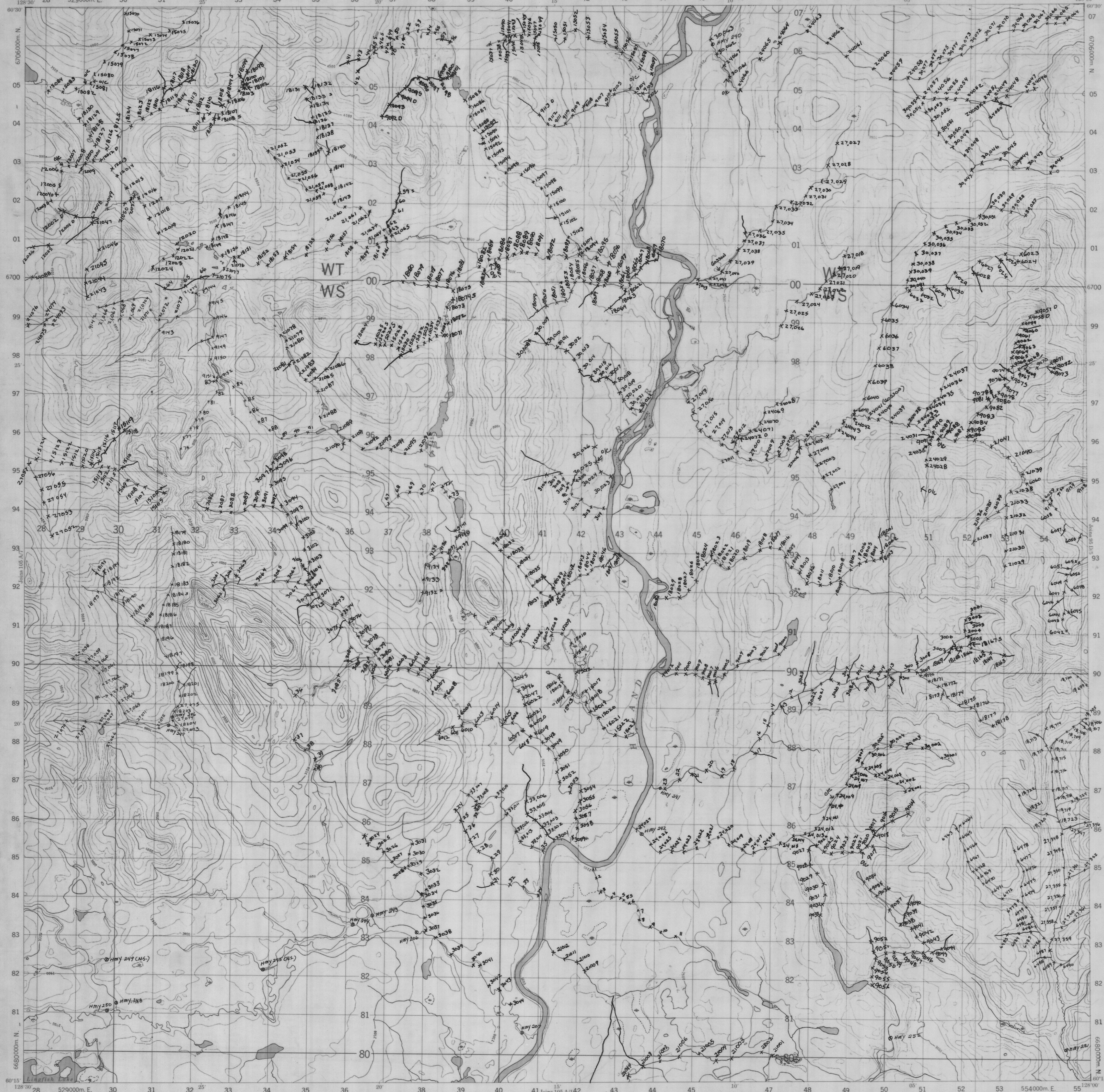
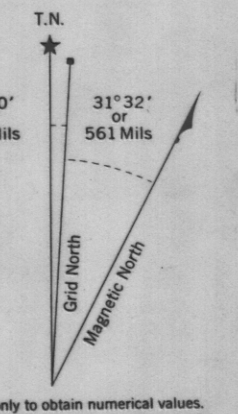
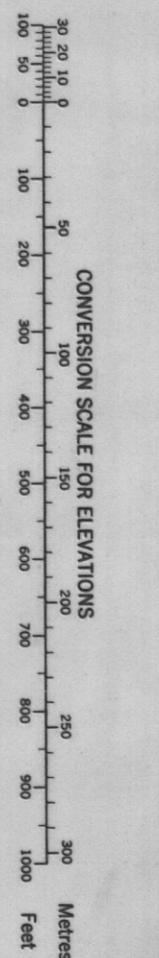


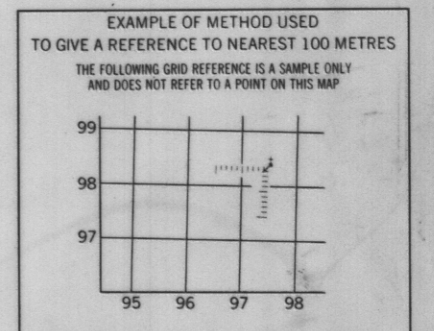
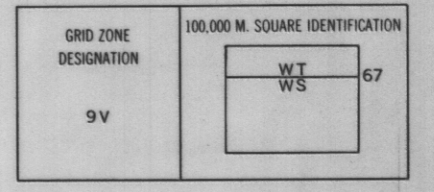
PROVISIONAL MAP 105 A/8 1:50,000 CANADA EDITION 1 CARTE PROVISOIRE 105 A/8 1:50,000



Refer to this map as 105 A/8 EDITION 1 MCE SERIES A722



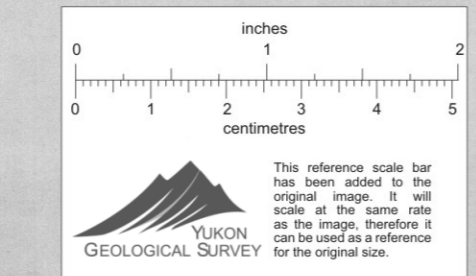
ONE THOUSAND METRE UNIVERSAL TRANSVERSE MERCATOR GRID ZONE 9



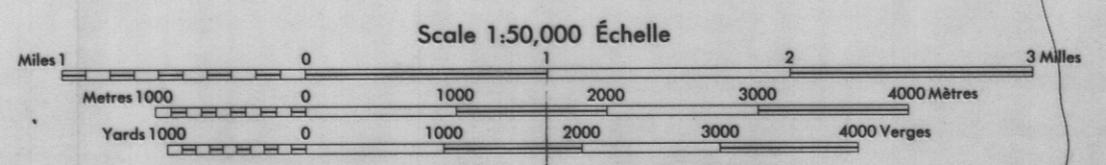
REFERENCE POINT	CHURCH (see above)	Grid Reference
EASTING	Read number on grid line immediately west of point	21 500
NORTHING	Read number on grid line immediately below point	97 500
EXAMPLE	Church reference point	21 500 97 500

Produced 1986, by the SURVEYS AND MAPPING BRANCH, DEPARTMENT OF ENERGY, MINES AND TECHNICAL SERVICES, from aerial photographs taken in 1982-83. Printed 1985.

Colors may be obtained from the Map Distribution Office, Department of Energy, Mines and Technical Services.



SUNRISE CREEK YUKON TERRITORY



This Provisional Map is equivalent to a standard map in accuracy of content.

Some names on this map are not yet official. Corrections or additions are invited by the Survey and Mapping Branch.

Cette carte provisoire équivaut à une carte régulière en ce qui concerne la précision de l'information.

Certains noms inscrits sur cette carte ne sont pas encore officiels. La Direction des levés de la cartographie serait agréée par les modifications et les additions.

Produced 1986, by the DIRECTION DES LEVÉS ET DE LA CARTOGRAPHIE, MINISTÈRE DE L'ÉNERGIE, DES MINES ET DES SERVICES TECHNIQUES, d'après des photographies aériennes prises en 1982-83. Imprimé en 1985.

Les couleurs sont disponibles au Bureau de distribution des cartes, Ministère de l'Énergie, des Mines et des Services Techniques.

009255