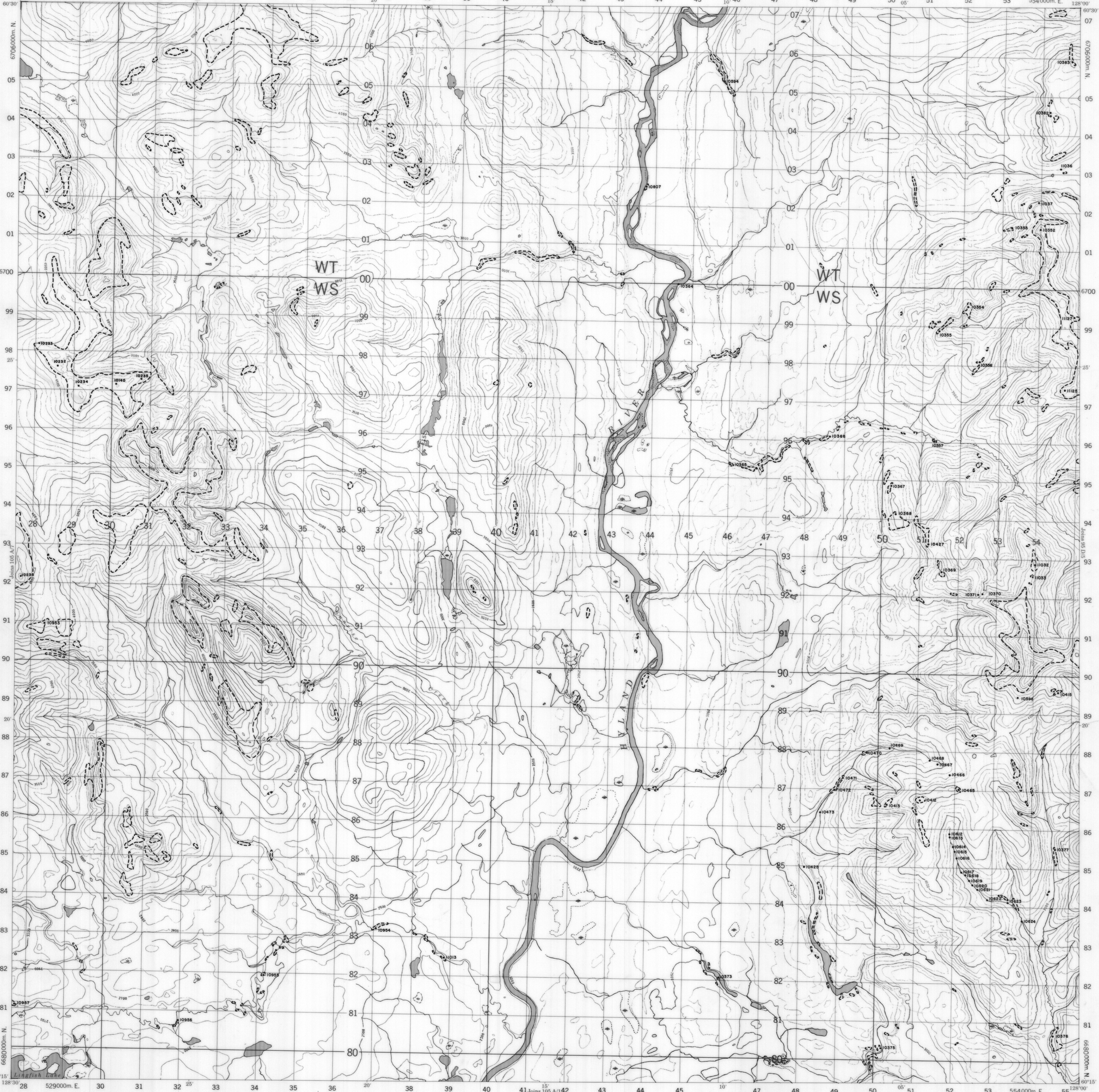
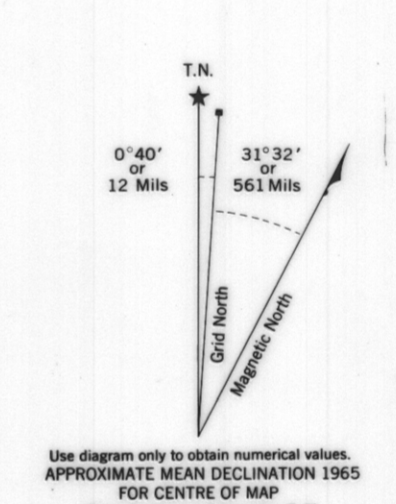
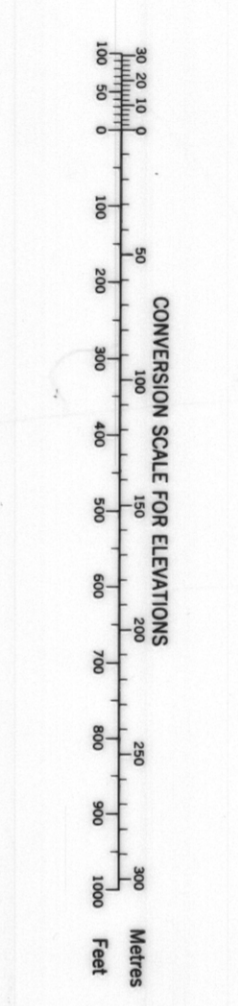


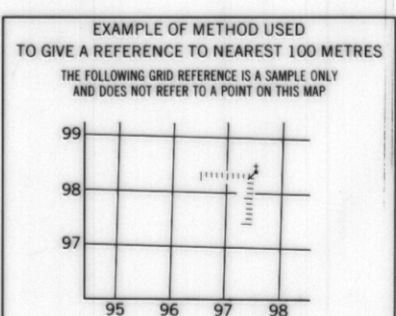
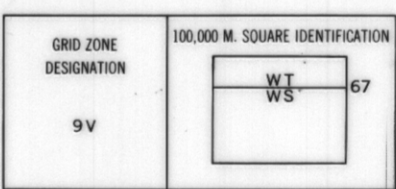
PROVISIONAL MAP 105 A/8 CANADA EDITION 1 CARTE PROVISOIRE 105 A/8



Refer to this map as: 105 A/8 EDITION 1 MCE SERIES A722



ONE THOUSAND METRE UNIVERSAL TRANSVERSE MERCATOR GRID ZONE 9

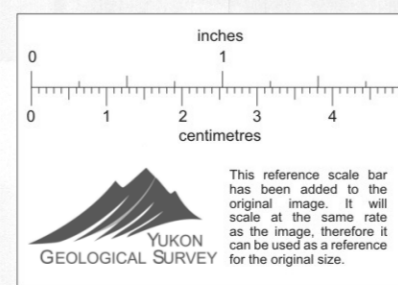
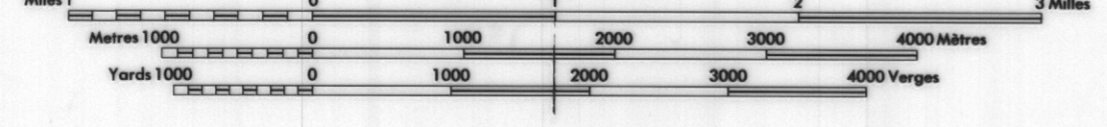


EXAMPLE OF METHOD USED TO GIVE A REFERENCE TO NEAREST 100 METRES... REFERENCE POINT: CHURCH (see above) EASTING: East number on grid line... NORTHING: East number on grid line... EXAMPLE MILITARY GRID REFERENCE: 975064

Produced, used, by the SURVEYS AND MAPPING BRANCH, DEPARTMENT OF ENERGY, MINES AND RESOURCES.

SUNRISE CREEK YUKON TERRITORY

Scale 1:50,000 Échelle



This Provisional Map is equivalent to a standard map of the same scale.

CONTRÔLE INTERNET 105-107

Cette carte provisoire équivaut à une carte régulière au même échelle.

CONTRÔLE INTERNET 105-107

Scale 1:50,000

105 A/8

CYPRUS ANVIL MINING CORPORATION
MACMILLAN PROJECT (ANMAC)
YUKON TERRITORY
009256
NTS 105-A-8
SURVEY BY: G.J.
DRAWN BY: KWC
DATE: DEC. 5, 1979