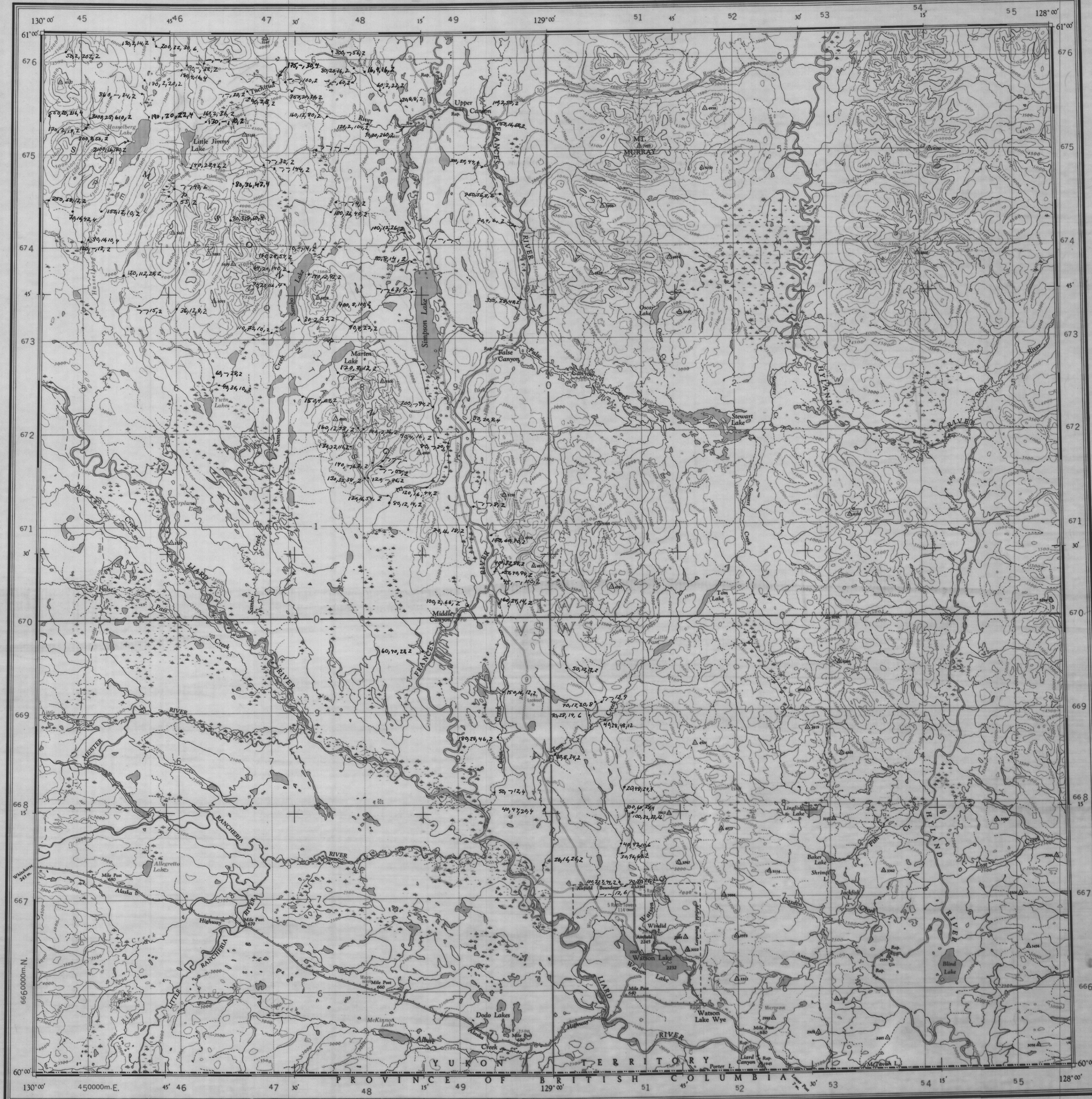


NATIONAL TOPOGRAPHIC SERIES
CANADA
DEPARTMENT OF MINES AND TECHNICAL SURVEYS
EDITION 3
SHEET 105 A



Military users refer to this map as Reference de la carte pour usage militaire.

SERIES 8002 SERIE 8002
SHEET 105A CARTE 105010
EDITION 3 MEC EDITION

Two sheets for 1978.

GRASS LAKES
HEAVY METALS (-60 NN)
W Sn Cu Mo

Table with 2 columns: 'VERTICAL CONTROL POINT' and 'HORIZONTAL CONTROL POINT'. It lists various control points and their coordinates.

TEN THOUSAND METRE
UNIVERSAL TRANSVERSE MERCATOR GRID
ZONE 9

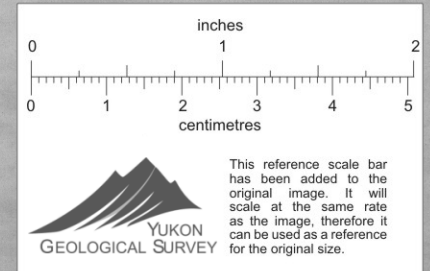
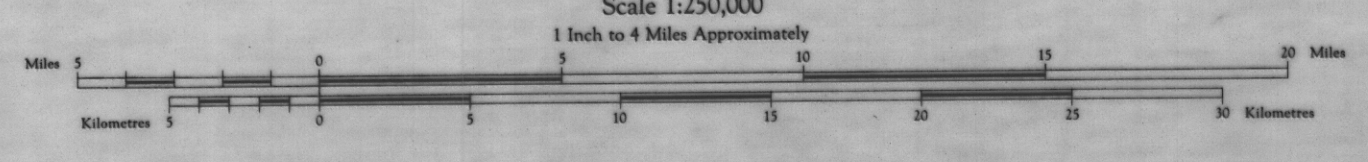
Universal Transverse Mercator Projection
All Elevations in Feet Above Mean Sea Level
Contour interval 500 Feet
North American Datum 1927

Magnetic Declination 33°30' East at centre of sheet, 1950
The variation of the magnetic needle is decreasing 2 minutes annually

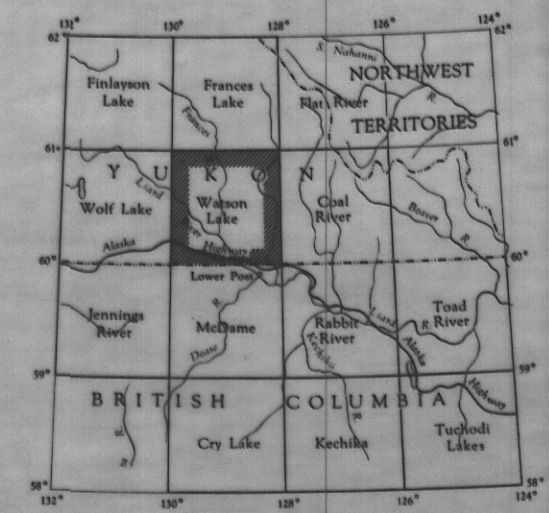
Surveyed, compiled, drawn and printed
by the Army Survey Det. R.C.E. (1948-50)
Aerial photography by the R.C.A.F. (1948)

Interim corrections 1979

REFERENCE table listing symbols for roads, routes, and other features. Includes symbols for paved roads, gravel roads, and various types of tracks.



REFERENCE table listing symbols for various features like triangulation stations, water areas, and navigation lights.



009298

WATSON LAKE Y.T.
SHEET 105 A
EDITION 3