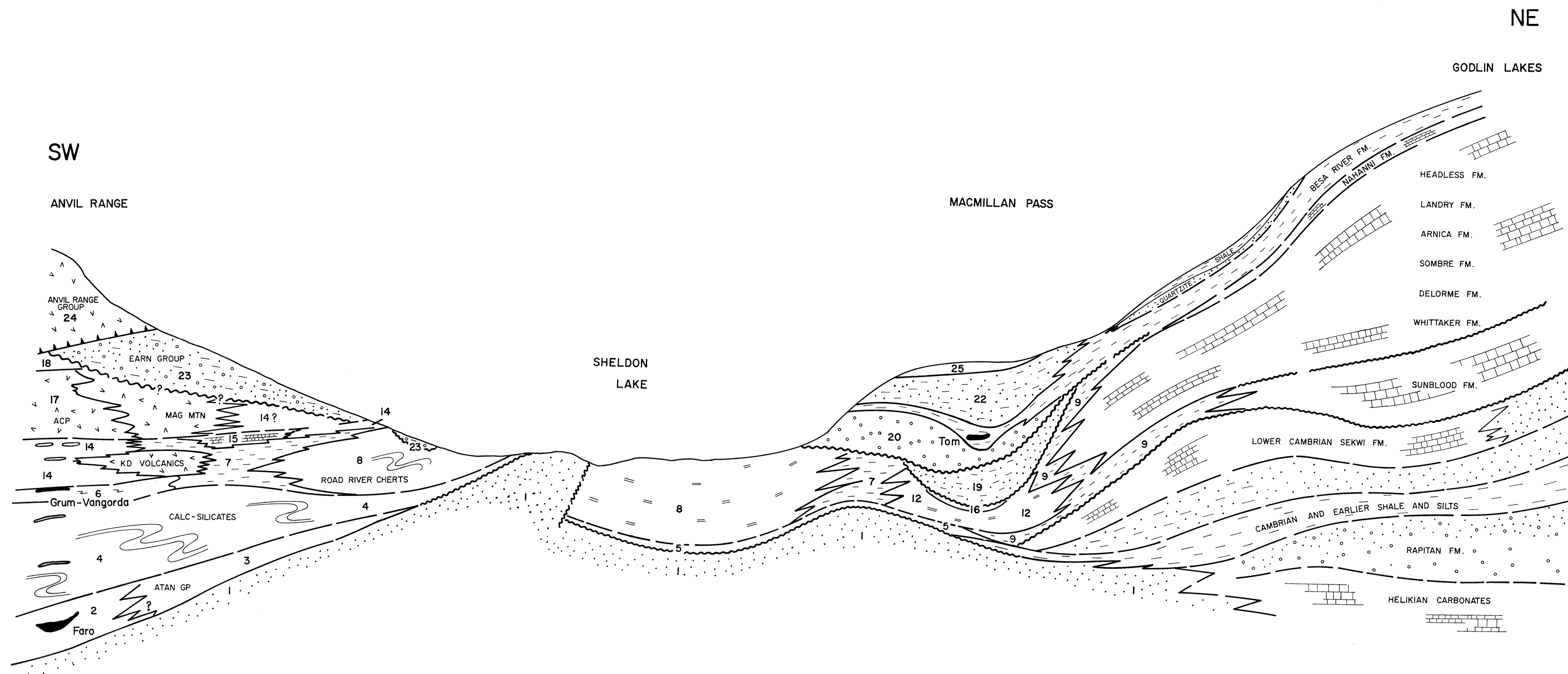
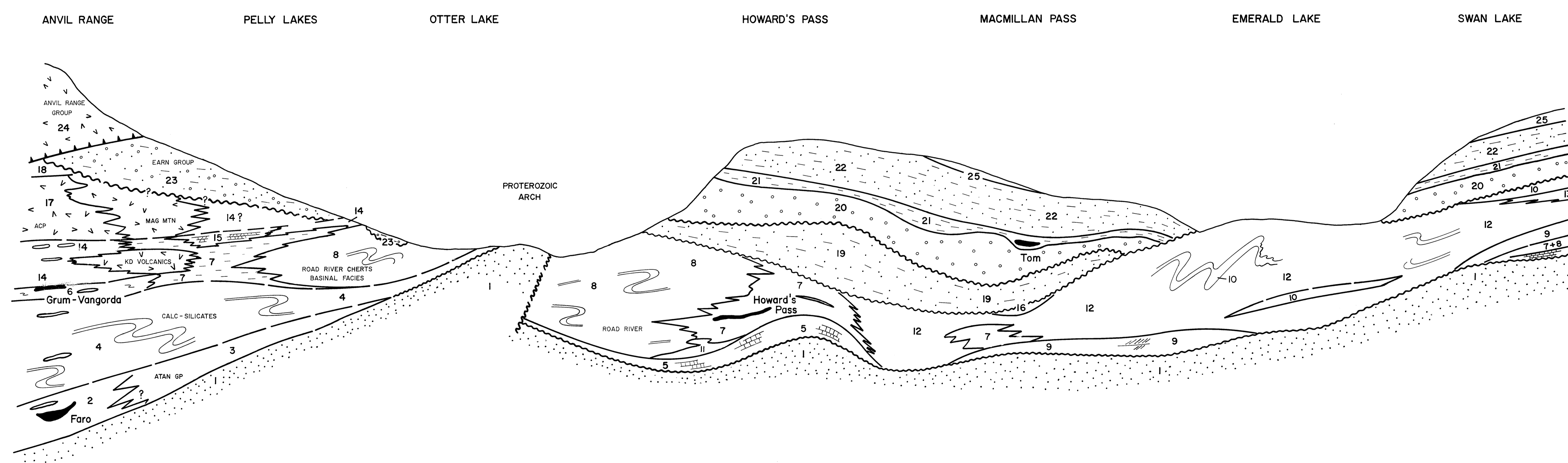


SELWYN BASIN - SIMPLIFIED CROSS-SECTION

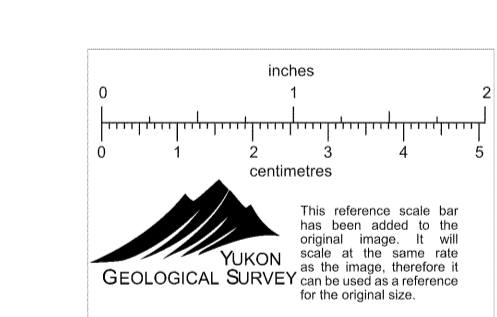


SELWYN BASIN - GEOLOGICAL CORRELATION



LEGEND

AGE	UNIT	DESCRIPTION
TERTIARY	28	DARK BROWN TO BLACK OLIVINE BASALTIC FLOWS; ALSO WITH ASSOCIATED PORPHYRIES.
	27	GREEN TO DARK GREY FINE GRAINED BASALT, DACITE AND ANDESITE, ALSO WITH ASSOCIATED PORPHYRIES.
CRETACEOUS	26	MEDIUM TO COARSE GRAINED BIOTITE GRANODIORITE TO QUARTZ MONZONITE, OFTEN PORPHYRITIC, ALSO FOLIATED TO GNEISSOSE.
TRIASSIC	25	TAN WEATHERING, SANDY TO SILTY SHALE, MINOR BROWN-BLACK LIMESTONE.
PENNSYLVANIAN TO PERMIAN	24	ANVIL RANGE GROUP: UNDIFFERENTIATED VOLCANICS, CHERT AND LIMESTONE.
	23	EARN GROUP: UNDIFFERENTIATED CHERT, SHALE, QUARTZITE, CONGLOMERATE AND LIMESTONE.
	22	IMPERIAL FORMATION: BROWN WEATHERING, MASSIVE BEDDED SILTSTONE TO INTERBEDDED SILTSTONE AND BLACK SHALES (TURBIDITES).
	21	CANDY FORMATION: SILVERY BLUE GREY TO BLACK WEATHERING, THINLY LAMINATED TO MASSIVE BEDDED BLACK SLICEOUS SHALE WITH INTERBEDDED BLACK CHERT.
UPPER DEVONIAN TO MISSISSIPPIAN	20	MACMILLAN FORMATION: MASSIVE TO CRAGGY DARK GREY TO BLACK WEATHERING, CHERT PEBBLE CONGLOMERATE (COARSE TO FINE GRAINED) TRENDING LATERALLY TO GREYWACKE AND BLACK QUARTZITE.
REGIONAL UNCONFORMITY		
	19	ISOLA BEAK FORMATION: RUSTY BROWN WEATHERING TURBIDITE-INTERBEDDED BLACK SHALE WITH 1' TO 20' THICK SILTSTONE TO GREYWACKE BEDS.
UNCONFORMITY		
	18	PESWICK POND FORMATION: BLACK GRAPHIC PHYLLITE WITH MINOR LIMESTONE BANDS (2 HOLE ORNODS).
	17	AMYSDALDIAL CHLORITIC PHYLLITE - INCLUDES MINOR TUFFS, BRECCIAS, FLOWS AND MINOR SERPENTINITE.
	16	GREY WEATHERING, GREY STRIPED ARBILLITE.
	15	GREY TO BUFF WEATHERING, THICK BEDDED DOLOMITE, SILTY DOLOMITE QUARTZITE AND FOSSILIFEROUS LIMESTONE.
	14	LIGHT GREY WEATHERING, LIGHT GREY CALCAREOUS SERCITE PHYLLITE - CONTAINS LARGE LENSES OF GREENSTONE IN ANVIL RANGE.
	13	LIGHT BROWN TO GREENISH GREY WEATHERING, LIGHT GREEN TO GREY SERCITE PHYLLITE.
ORDOVICIAN TO MIDDLE DEVONIAN	12	EMERALD LAKE FORMATION: GREY WEATHERING BLACK TO GREY CHERT INTERBEDDED WITH RUSTY BROWN TO TAN WEATHERING LIGHT GREY TO GREEN PYRITIC SHALE.
	11	TAN TO GREY SHALE WITH WHISPS OF BLACK TO DARK GREY SHALE AND CHERT.
	10	BLACK WEATHERING, BLACK MASSIVE CHERT.
	9	HESS FORMATION: BLACK TO DARK GREY WEATHERING, BLACK GRAPHIC SHALE WITH BEDS OF CROSS-BEDDED LIMESTONE AND QUARTZITE - TURBIDITE SEQUENCE.
	8	ROAD RIVER FORMATION: BLACK, GREY, WHITE, GREEN, PURPLE, (VARICOLOURED) CHERT.
	7	HOWARD'S PASS FORMATION: SILVERY BLUE GREY TO BLACK WEATHERING BLACK TO DARK GREY GRAPHIC AND OFTEN GRAPHOLITIC SHALE AND INTERBEDDED BLACK CHERT, DISSEMINATED PYRITE 1-20%.
	6	BLACK WEATHERING BLACK QUARTZOSE PHYLLITE - MAY CONTAIN LENSES OF GREENSTONE. GRADES TO QUARTZ - BIOTITE SCHIST.
UPPER CAMBRIAN	5	GREY WEATHERING, LIGHT TO DARK GREY MASSIVE CRYSTALLINE LIMESTONE GRADING TO MASSIVE BEDDED LIMESTONE AND CALCAREOUS BLACK SHALE WITH PODS OF LIMESTONE.
MIDDLE TO UPPER CAMBRIAN	4	DARK GREEN, WHITE AND PURPLE Banded CALC-SILICATES.
	3	ATAN GROUP: ORTHOQUARTZITE, SHALE, GREEN PHYLLITE, QUARTZ PEBBLE CONGLOMERATE, SILTY LIMESTONE, GREY-BLACK PHYLLITE.
	2	STAUROLITE GARNET BIOTITE MUSCOVITE SCHIST WITH AMPHIBOLITE TO ANDESITE LENSES TO GREEN LUSTROUS CHLORITE MUSCOVITE PHYLLITE.
UNCONFORMITY		
HADRYNIAN	1	QUARTZITE, LIMESTONE, GRANULITE, CHERT, SHALE, AND PHYLLITE.
	12	GREEN AND MAROON SHALE.
	1b	GREY WEATHERING, DARK GREY CRYSTALLINE LIMESTONE.
	1a	BROWN TO TAN QUARTZITE.



RDH FEB 77

009505

HF 2-44

Macmillan - Swano Section - 105