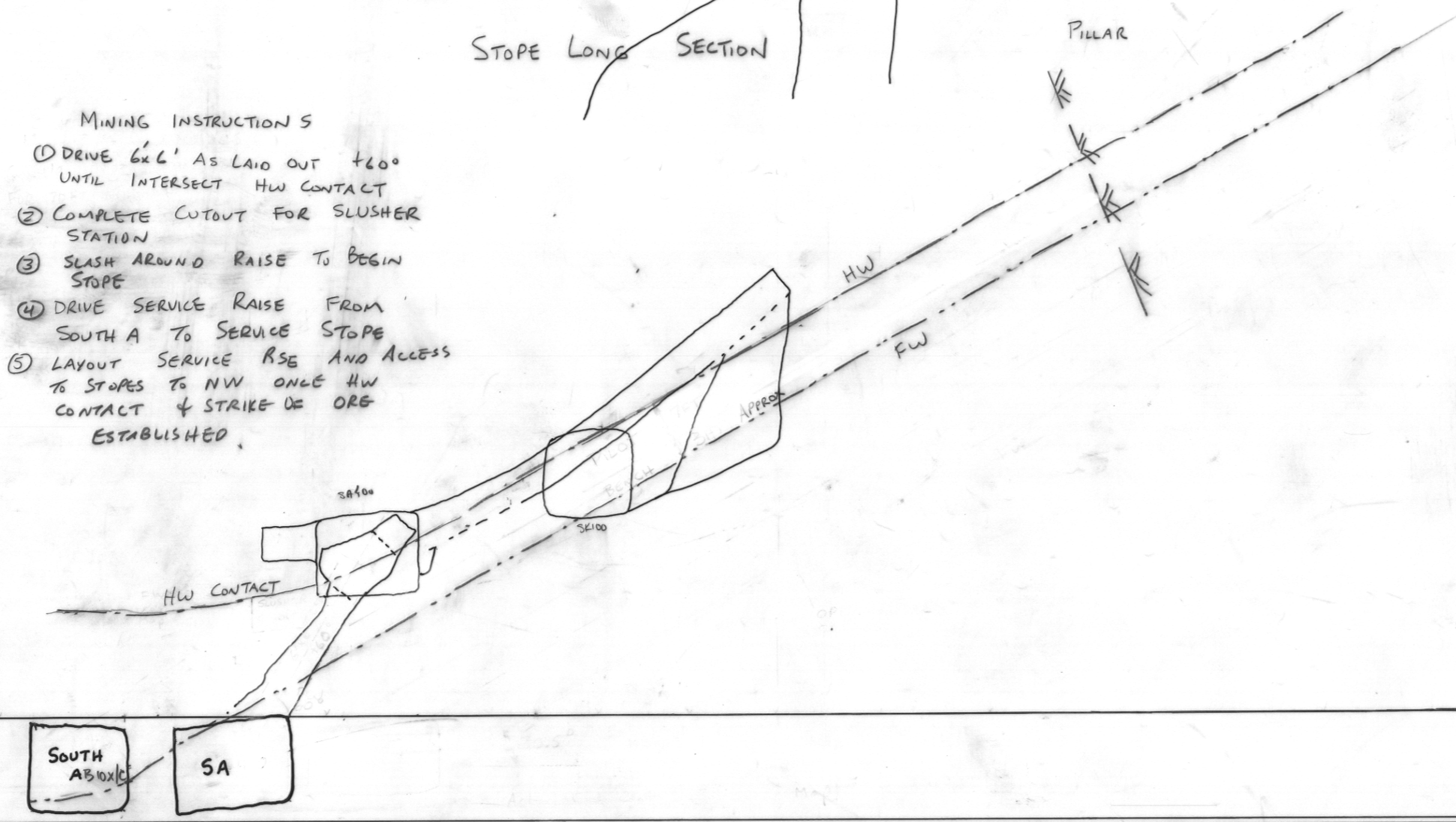
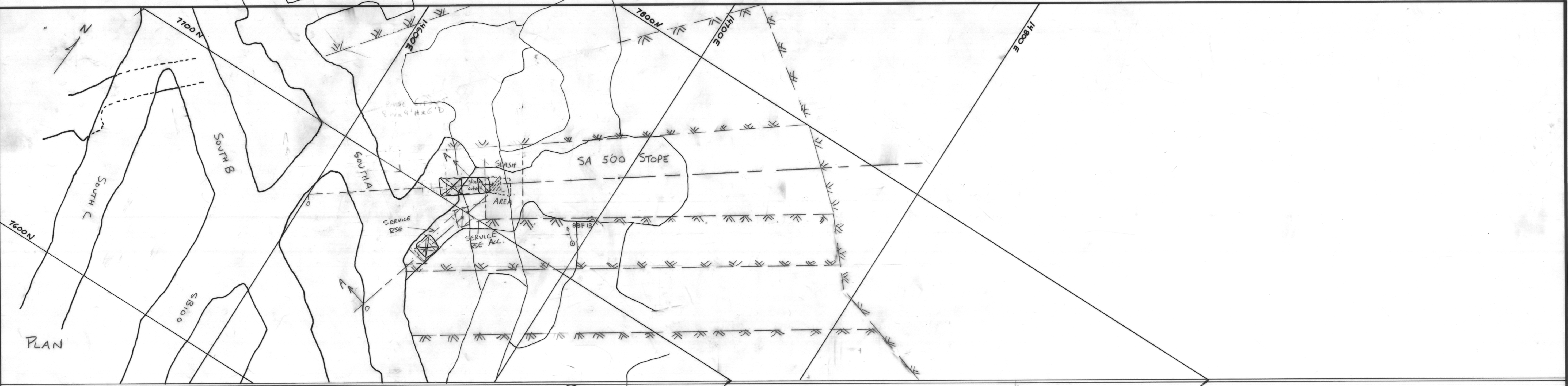


CURRACH RESOURCES INC. FARO, Y.T.

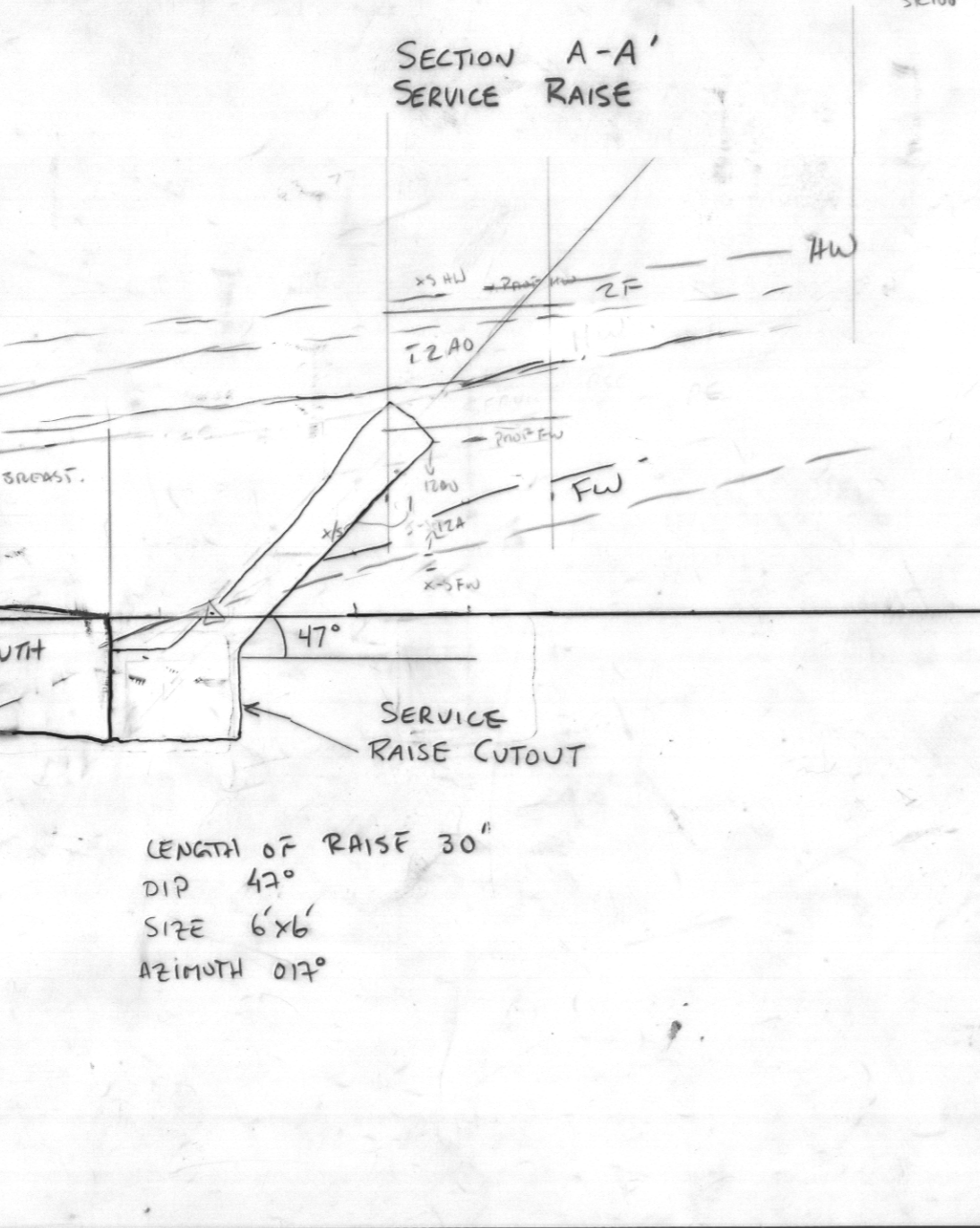
DATE: 10/12/10
DRAWN BY: MH
REVISION BY: MH

SA 500 SLUSHER STOPE

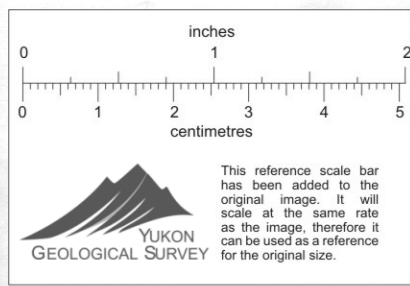
009125



- MINING INSTRUCTIONS
1. DRIVE 66' AS LAID OUT +20' UNTIL INTERSECT HW CONTACT
 2. COMPLETE CUTOUT FOR SLUSHER STATION
 3. SLASH AROUND RAISE TO BEGIN STOPE
 4. DRIVE SERVICE RAISE FROM SOUTH A TO SERVICE STOPE
 5. LAYOUT SERVICE RAISE AND ACCESS TO STOPS TO NEW DAILY HW CONTACT & STRIKE DE ORE ESTABLISHED.



LENGTH OF RAISE 30'
DIP 42°
SIZE 6'x6'
AZIMUTH 012°



SA500 SLUSHER STOPE.