

GRASS LAKES
 105 G FINLAYSON LAKE
 1:250,000
 GEOLOGY SAMPLE LOCATION
 GEOCHEM.

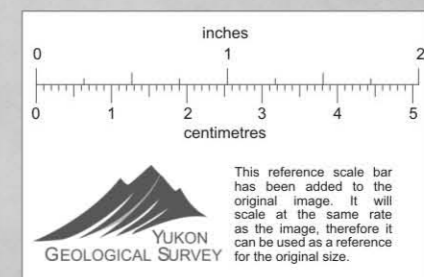
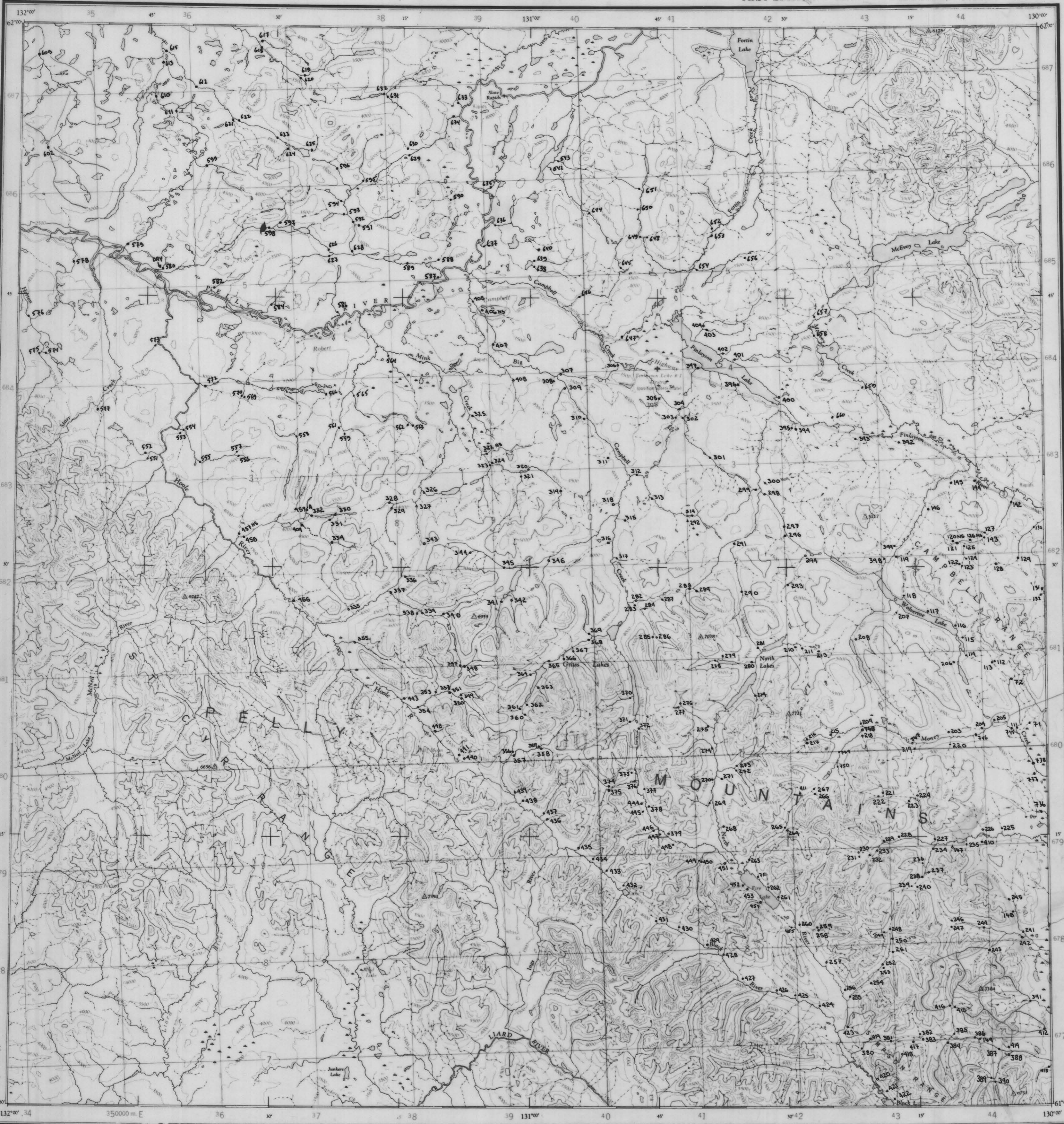
NATIONAL TOPOGRAPHIC SERIES

CANADA

FIRST EDITION (1977)

CANADA, SHEET 105 G

Military users refer to this map as: Réference de la carte pour usage militaire.
 SERIES A502 SERIE MAP 105 G CARTE, EDITION 2 MCE EDITION



UTM ZONE	UTM ZONE
10	10
40	40
8	8
6	6
UTS286	UTS286
9VUT8286	9VUT8286

TEN THOUSAND METRE
 UNIVERSAL TRANSVERSE MERCATOR GRID
 ZONE 9

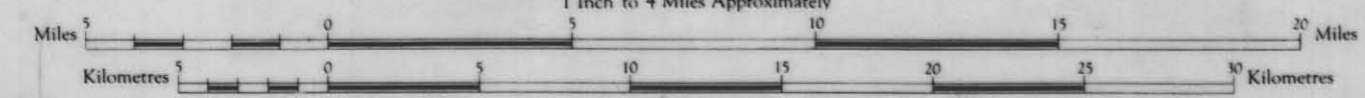
THE DECLINATION OF THE COMPASS NEEDLE, 1952

Surveyed, compiled, drawn and printed by the ARMY SURVEY ESTABLISHMENT R.C.E., 1949-52.
 Aerial photography by the R.C.A.F., 1949.
 Universal Transverse Mercator Projection.
 Inform: Corrections 1974 (1977)

FINLAYSON LAKE
YUKON TERRITORY

009553

Scale 1:250,000
 1 Inch to 4 Miles Approximately



REFERENCE

Road, Loose Surface, All Weather	More than 2 Lanes	2 Lanes
Road, Loose Surface, Less than 2 Lanes	All Weather	Day Weather
Cart Track		
Trail		
Railway, Multiple Track		
Single Track		
Boundary, International		
Province or State		
County or District		
Reservations, Indian, Military, Park, etc.		

ROADS - ROUTES
 hard surface - paved
 loose surface - de gravel
 cart track - de terre
 trail - sentier
 Detentions - Suppressions

The general public may obtain copies of this map from the Map Distribution Office, Dept. of Mines and Technical Surveys, Ottawa.

Contour Interval 50 Feet.
 All Elevations in Feet above Mean Sea Level.

Corrections Provisoires, 1977

REFERENCE

Triangulation Station	Spot Elevation, in Feet	257
Contours, Elevation	Wooded Areas	
Depression	Swamp or Marsh	
Approximation		
Church, School		
Stream, Reservoir		
Dam		
Falls		
Navigation Light		
Atmosphere, on Land	Elevation in Feet 250	on Water
Main Electric Power Line		



NOTE: On the above index the sheets published are shown shaded green.

GRASS LAKES
 GEOCHEM:
 Sample Location

FINLAYSON LAKE Y.T.
 SHEET 105 G
 FIRST EDITION (1977)
 EDITION 2