

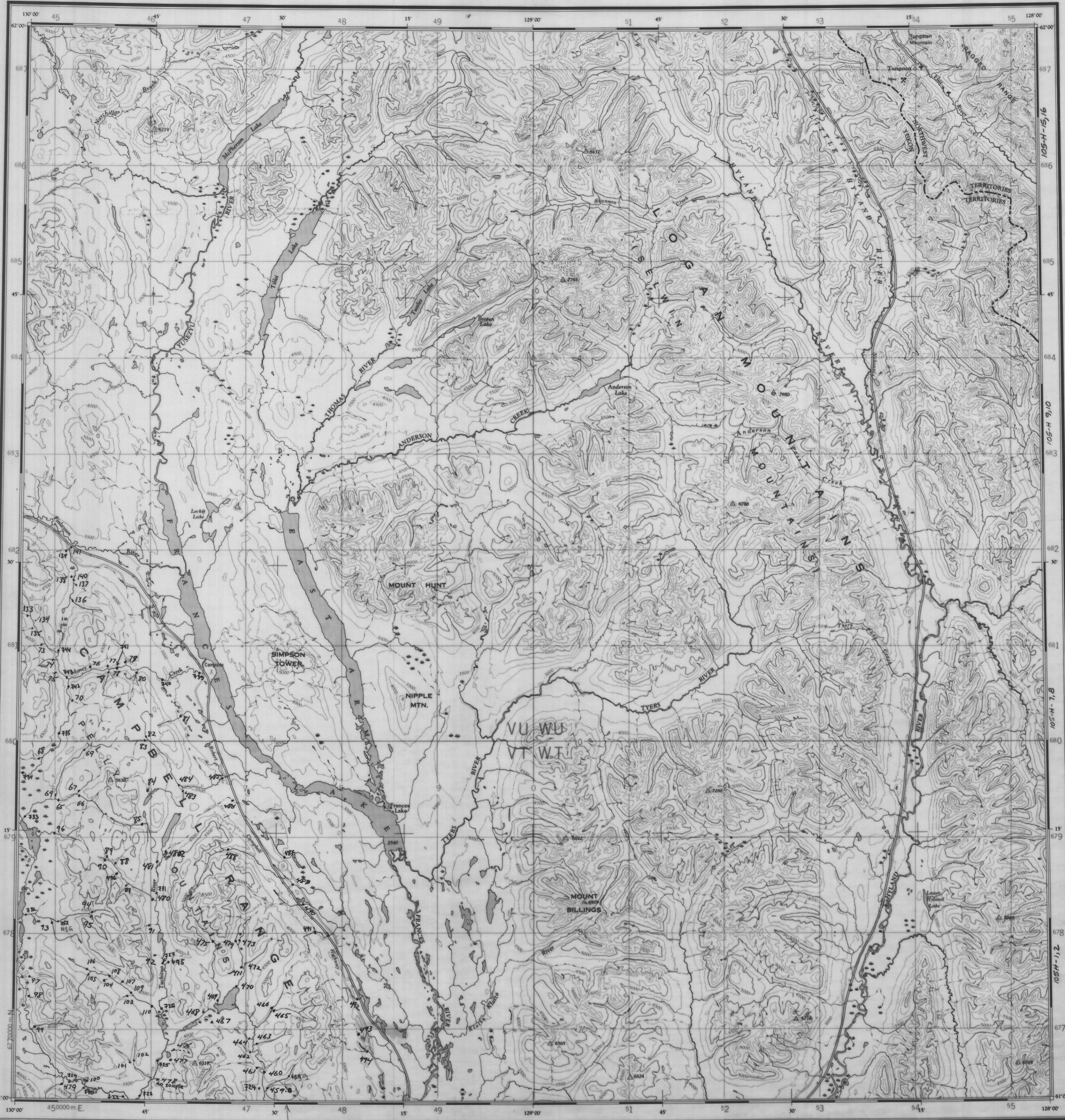
GRASS LAKES
 105 H FRANCES LAKE
 1:250,000
 GEOLOGY SAMPLE LOCATION
 GEOCHEM.

NATIONAL TOPOGRAPHIC SERIES

CANADA

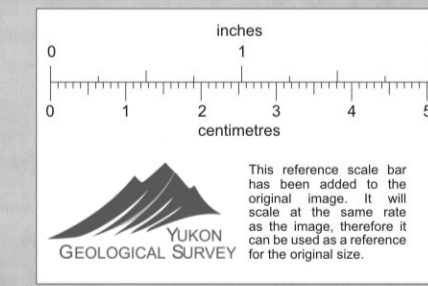
THIRD EDITION 4

SHEET 105 H



| | |
|-------------|-----------|
| Refer to | 105 H |
| This map as | EDITION 4 |

Military users, refer to this map as:
 Référence de la carte pour usage militaire:
 SERIE A502
 MAP 105 H CARTE
 EDITION 4 MCE EDITION



| | | | | | | | | | | | | | |
|--|--|-------|----|----|-------|----|--|----|----|--------|----|----------|--|
| TO USE A STANDARD REFERENCE ON THIS SHEET TO NEAREST 1000 METERS | TO USE A STANDARD REFERENCE ON THIS SHEET TO NEAREST 1000 METERS | | | | | | | | | | | | |
| <table border="1"> <tr> <td>640</td> <td>VU WU</td> <td>WT</td> </tr> <tr> <td>50</td> <td>VT WT</td> <td>83</td> </tr> </table> | 640 | VU WU | WT | 50 | VT WT | 83 | <table border="1"> <tr> <td>WT</td> <td>05</td> </tr> <tr> <td>WT0583</td> <td>83</td> </tr> <tr> <td>9VWT0583</td> <td></td> </tr> </table> | WT | 05 | WT0583 | 83 | 9VWT0583 | |
| 640 | VU WU | WT | | | | | | | | | | | |
| 50 | VT WT | 83 | | | | | | | | | | | |
| WT | 05 | | | | | | | | | | | | |
| WT0583 | 83 | | | | | | | | | | | | |
| 9VWT0583 | | | | | | | | | | | | | |

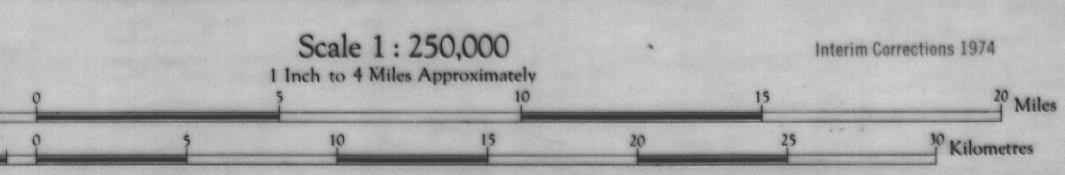
TEN THOUSAND METRE
 UNIVERSAL TRANSVERSE MERCATOR GRID
 ZONE 9

GRASS LAKES
 GEOCHEM:
 SAMPLE LOCATION

Note: Copies of this map required for official purposes may be obtained from the Army Survey Dept. AMQ, Ottawa. The general public may obtain copies from the Map Distribution Office, Dept. of Mines and Technical Surveys, Ottawa.

THE DECLINATION OF THE COMPASS NEEDLE, 1951.
 Surveyed, compiled, drawn and printed by the ARMY SURVEY ESTABLISHMENT R.C.E., 1949-51
 Aerial photography by R.C.A.F., 1949.
 Edition 3 printed 1964
 Transverse Mercator Projection.

Scale 1:250,000
 1 Inch to 4 Miles Approximately
 Interim Corrections 1974
 Contour interval 500 Feet.
 All Elevations in Feet above Mean Sea Level.
 North American Datum 1927

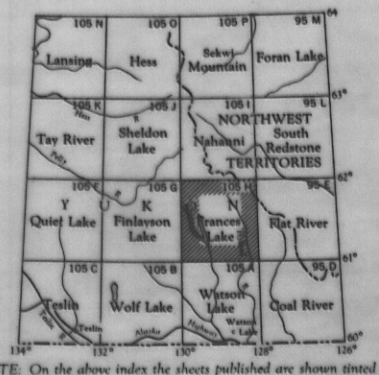
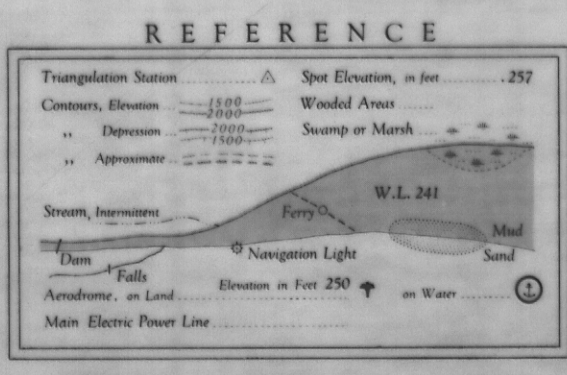


REFERENCE

| | | | |
|---|--|-------------------|---------------------|
| — | Road, Hard Surface, All Weather | More than 2 Lanes | Partially Completed |
| — | Hard Surface, All Weather | 2 Lanes | Completed |
| — | Loose Surface, All Weather | More than 2 Lanes | 2 Lanes |
| — | Loose Surface, Less than 2 Lanes | All Weather | Dry Weather |
| — | Railway, Multiple Track | | |
| — | Boundary, International | | |
| — | Province or State | | |
| — | County or District | | |
| — | Reservations, Indian, Military, Park, etc. | | |

ROADS-ROUTES
 hard surface - pavé
 loose surface - de gravier
 cart track - de terre
 trail - sentier
 Deletions - Suppressions

009574



FRANCES LAKE
 YUKON TERR.-NORTHWEST TERR.
 SHEET 105 H
 EDITION 4