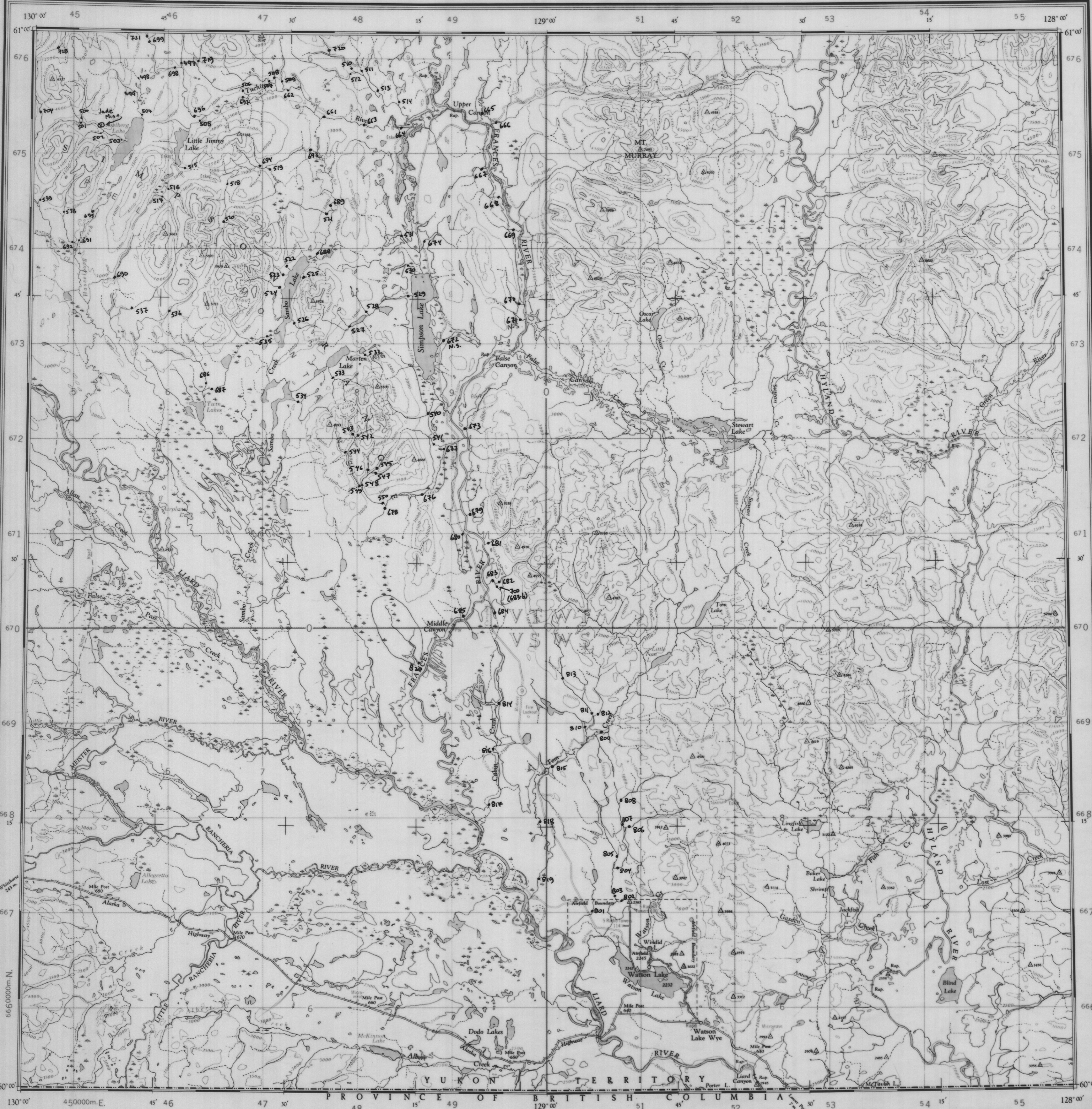
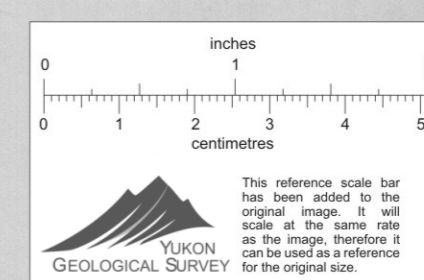


GRASS LAKES
 105 A WATSON LAKE
 1:250,000
 GEOLOGY SAMPLE LOCATION
 GEOCHEM.



Military users refer to this map as: Réference de la carte pour usage militaire.
 SERIES A502 SERIE MAP 105 A CARTE EDITION 3 MCE EDITION



VERTICAL CONTROL POINT		HORIZONTAL CONTROL POINT	
VT	WT	VT	WT
V	W	V	W
5	6	8	1
450000		9VT8618	

TEN THOUSAND METRE UNIVERSAL TRANSVERSE MERCATOR GRID ZONE 9

Universal Transverse Mercator Projection
 All Elevations in Feet above Mean Sea Level
 Contour Interval 500 Feet
 North American Datum 1927

Magnetic Declination 33°39' East at centre of sheet, 1950
 The variation of the compass needle is decreasing 2 minutes annually

Surveyed, compiled, drawn and printed by the Army Survey Reg. R.C.E. 1948-50
 Aerial photography by the R.C.A.F. 1948
 Interim corrections 1979

REFERENCE

Symbol	Description
—	Road, Hard Surface, Heavy Duty
—	Road, Hard Surface, Medium Duty
—	Road, Loose Surface, Gravel and Chert
—	Trail
—	Railway, Double Track
—	Railway, Single Track
—	Boundary, International
—	Boundary, Provincial
—	Coast of Land (Ocean)
—	Navigation, Military, etc.
—	Electric Power Line

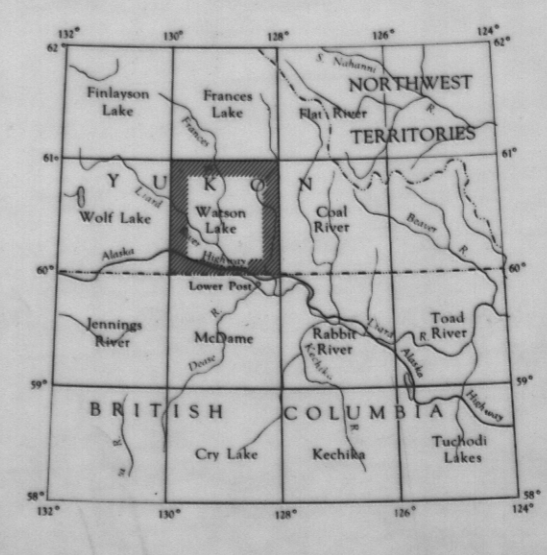


WATSON LAKE YUKON TERRITORY
 Scale 1:250,000
 1 Inch to 4 Miles Approximately

009576

REFERENCE

△	Triangulation Station	△	Spot Elevation, in Feet
—	Contour, Elevation	—	Washed Area
—	Form Line	—	Swamp or Marsh
—	Stream, Intermittent	—	Navigation Light
—	Trail	—	Artificial Hill, El. in Feet
—	Field	—	Signal, Beacon
—	Building	—	Signal, Anchorage
—	Church	—	Fire Lookout Tower
—	School	—	Beach Mark
—		—	Telephone, Trunk Line



GRASS LAKES
 GEOCHEM;
 SAMPLE LOCATION

WATSON LAKE Y.T.
 SHEET 105 A
 EDITION 3