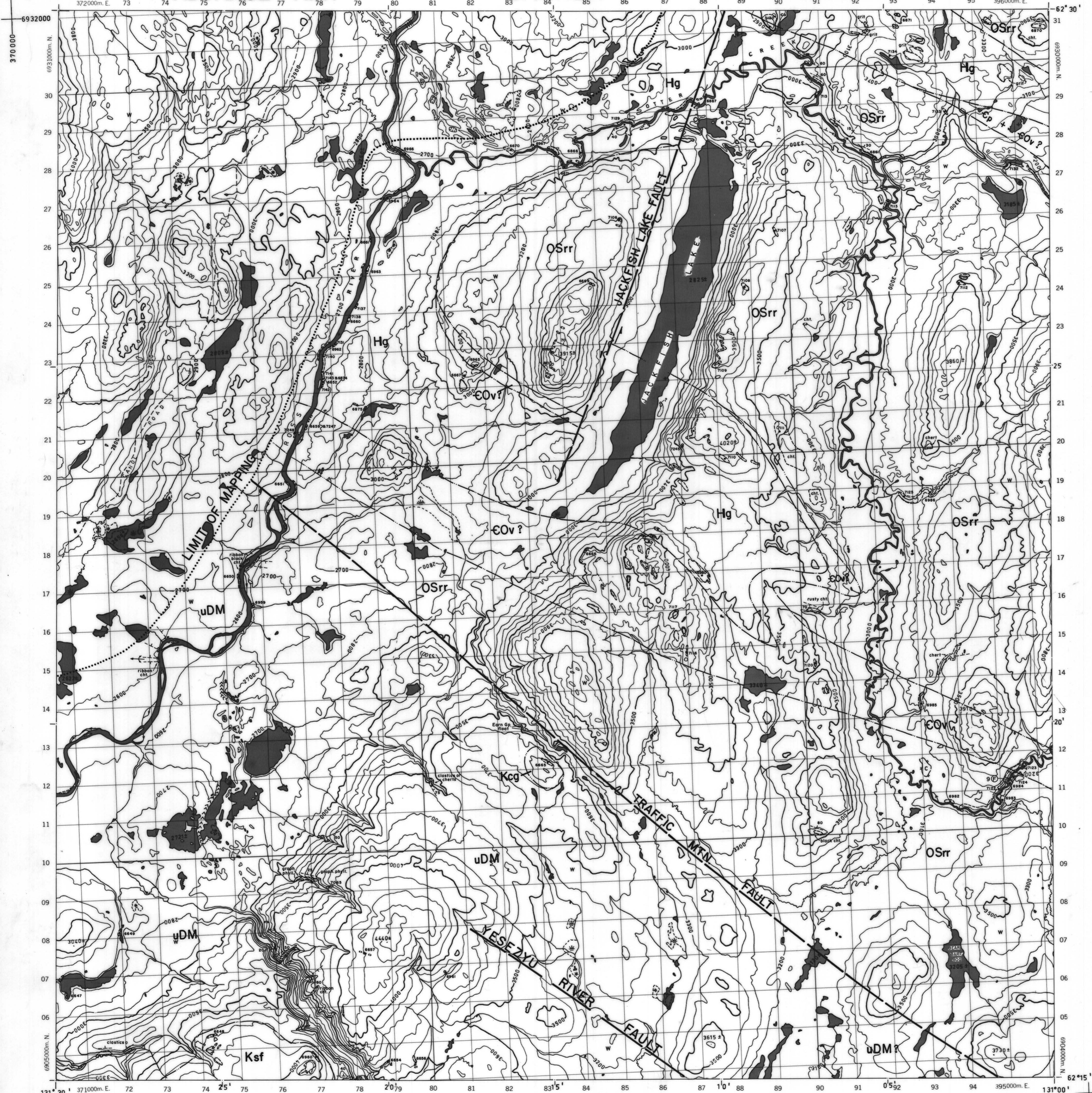


ADVANCE PRINT

CANADA

ÉPREUVE PRÉLIMINAIRE

105 J/6



PRODUCED BY SURVEYS AND MAPPING BRANCH,  
DEPARTMENT OF ENERGY, MINES AND RESOURCES,  
OTTAWA, 1971

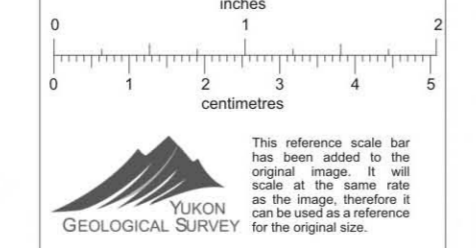
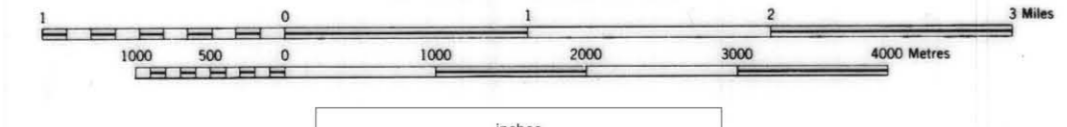
**JACKFISH LAKE**  
YUKON TERRITORY

ÉTABLI PAR LA DIRECTION DES LEVÉS ET DE LA  
CARTOGRAPHIE, MINISTÈRE DE L'ÉNERGIE, DES  
MINES ET DES RESSOURCES, OTTAWA, EN 1971.

CONTOUR INTERVAL 100 FEET

SCALE 1:50,000 ÉCHELLE  
1.25 inches to 1 mile approximately

EQUIDISTANCE DES COURBES 100 PIEDS



CYPRUS ANVIL MINING CORPORATION	
GEOLOGICAL MAP	
009738	
REVISED:	NTS: 105-J-6 DRAWN BY: EDCCO LTD. DATE: MARCH, 1980