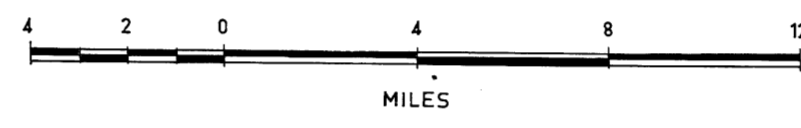
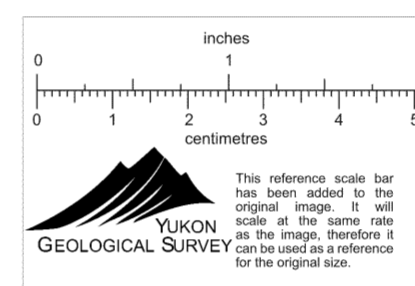


GEOLOGY OF ANVIL DISTRICT
YUKON TERRITORY

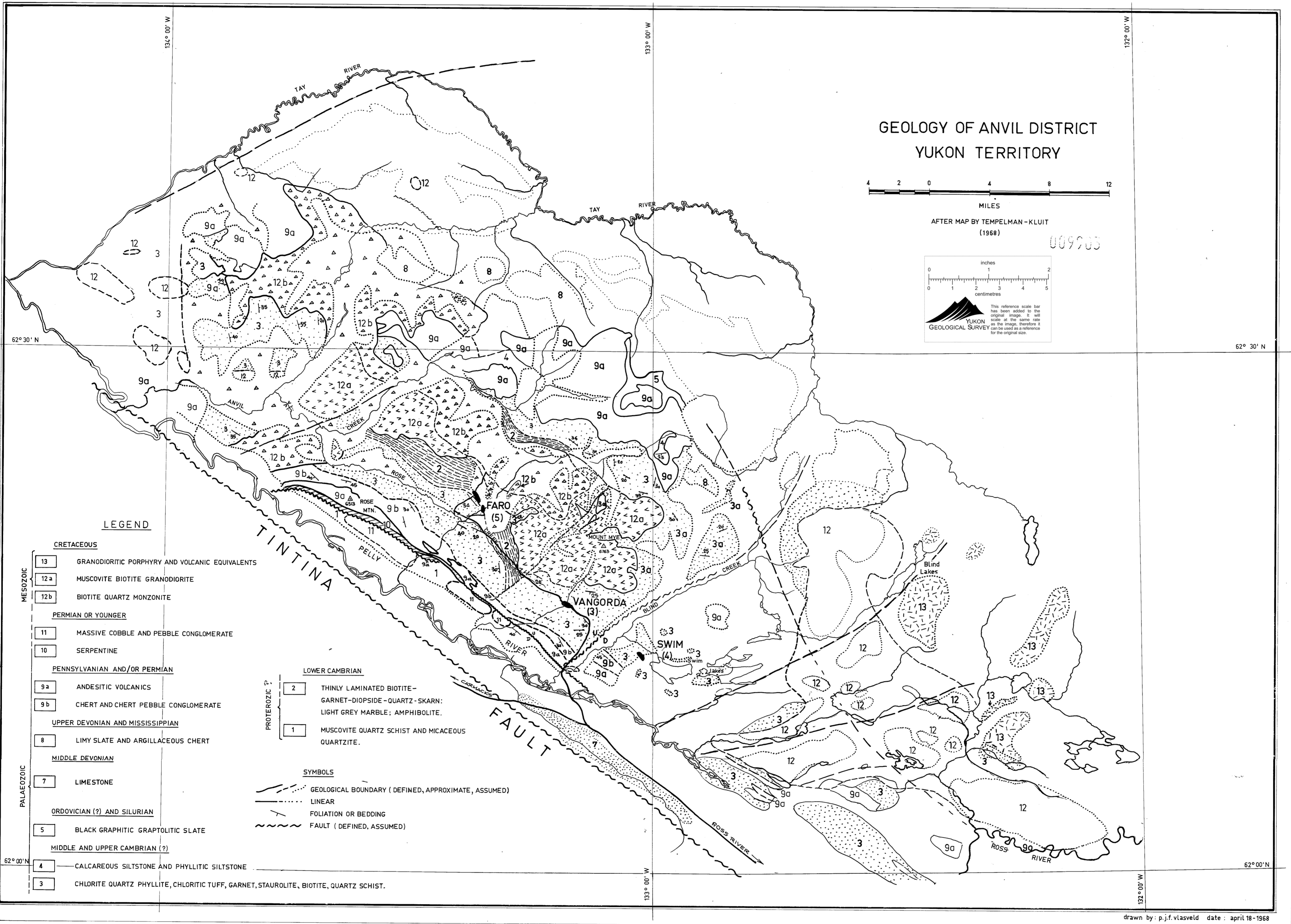


AFTER MAP BY TEMPELMAN - KLUIT
(1958)

009903



This reference scale has been added to the original map. It will show on the map the distance in inches and a reference for the original scale.



LEGEND

- CRETACEOUS
- 13 GRANDIODORITIC PORPHYRY AND VOLCANIC EQUIVALENTS
- 12a MUSCOVITE BIOTITE GRANDIORITE
- 12b BIOTITE QUARTZ MONZONITE
- PERMIAN OR YOUNGER
- 11 MASSIVE COBBLE AND PEBBLE CONGLOMERATE
- 10 SERPENTINE
- PENNSYLVANIAN AND/OR PERMIAN
- 9a ANDESITIC VOLCANICS
- 9b CHERT AND CHERT PEBBLE CONGLOMERATE
- UPPER DEVONIAN AND MISSISSIPPIAN
- 8 LIMY SLATE AND ARGILLACEOUS CHERT
- MIDDLE DEVONIAN
- 7 LIMESTONE
- ORDOVICIAN (?) AND SILURIAN
- 5 BLACK GRAPHITIC GRAPTOLITIC SLATE
- MIDDLE AND UPPER CAMBRIAN (?)
- 4 CALCAREOUS SILTSTONE AND PHYLLITIC SILTSTONE
- 3 CHLORITE QUARTZ PHYLLITE, CHLORITIC TUFF, GARNET, STAUROLITE, BIOTITE, QUARTZ SCHIST.

- PROTEROZOIC ?
- 2 THINLY LAMINATED BIOTITE-GARNET-DIOPSIDE-QUARTZ-SKARN; LIGHT GREY MARBLE; AMPHIBOLITE.
- 1 MUSCOVITE QUARTZ SCHIST AND MICACEOUS QUARTZITE.

- SYMBOLS
- GEOLOGICAL BOUNDARY (DEFINED, APPROXIMATE, ASSUMED)
- LINEAR
- FOLIATION OR BEDDING
- FAULT (DEFINED, ASSUMED)

drawn by p.j.f.vlasveld date: april 18-1968

Approved by
Provincial Geologist
Yukon Territory

105-K