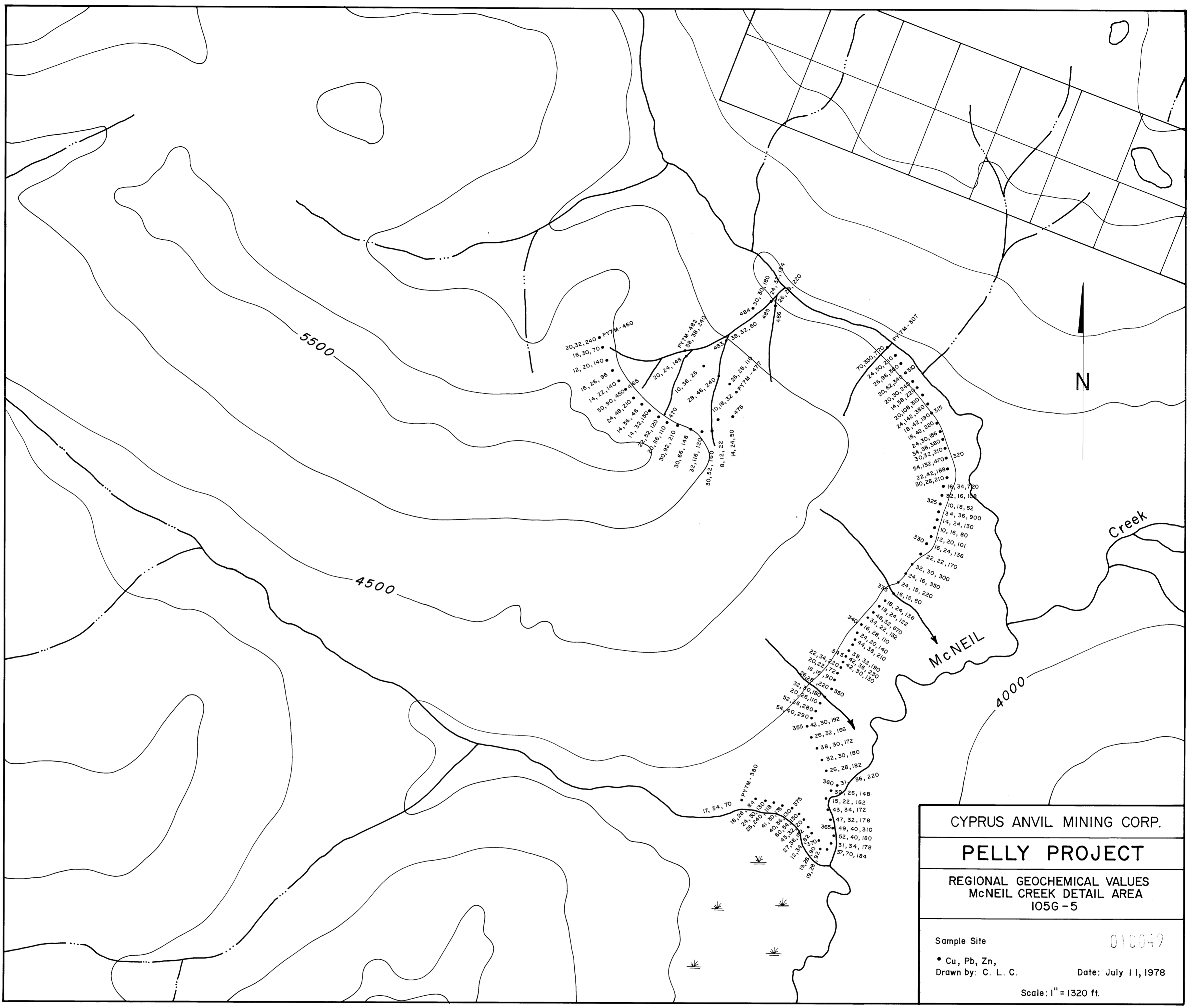


105G-5-12 Pelly Project  
 Regional Geochemical Values  
 McNeil Creek 1" = 1320' Summary 1977



CYPRUS ANVIL MINING CORP.	
<b>PELLY PROJECT</b>	
REGIONAL GEOCHEMICAL VALUES McNEIL CREEK DETAIL AREA 105G-5	
Sample Site	010049
• Cu, Pb, Zn, Drawn by: C. L. C.	Date: July 11, 1978
Scale: 1" = 1320 ft.	

