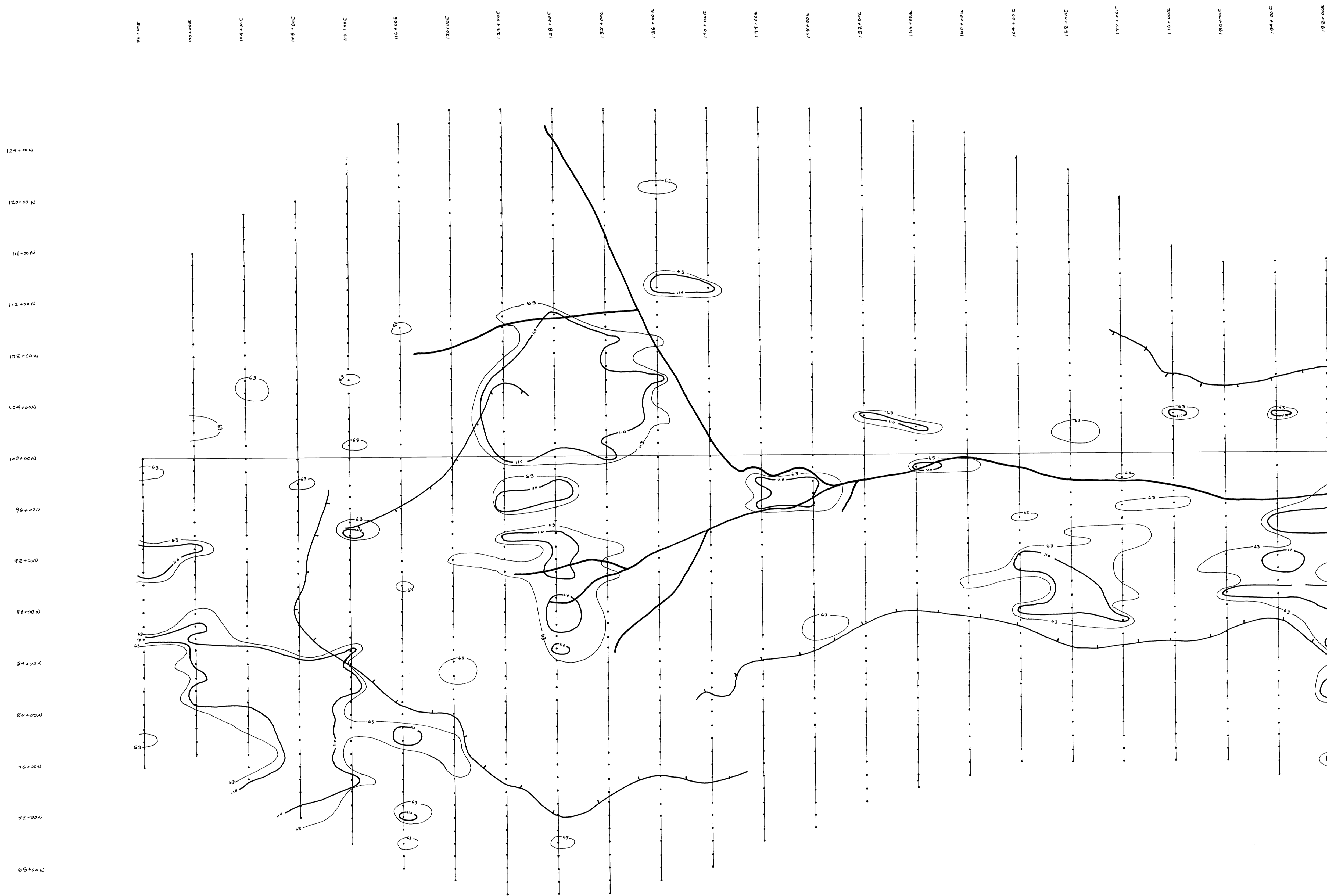
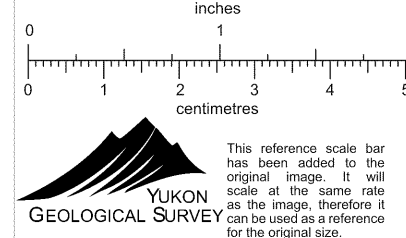


6.7m lead 63 ppm



CYPRUS ANVIL MINING CORPORATION	
MONEY MINERAL CLAIM GROUP	
LEAD CONTOURS - GRID SOILS (CONTOURS at 63 ppm and 110 ppm)	
 N.T.S. 100 G-8 SCALE: 1" = 400'	DATE: MARCH 1976 DRAWN: T.J. ADAMSON 010055

HF 2-484

105-0-8
 MONEY MINERAL CLAIM GROUP
 1" = 400' 1976