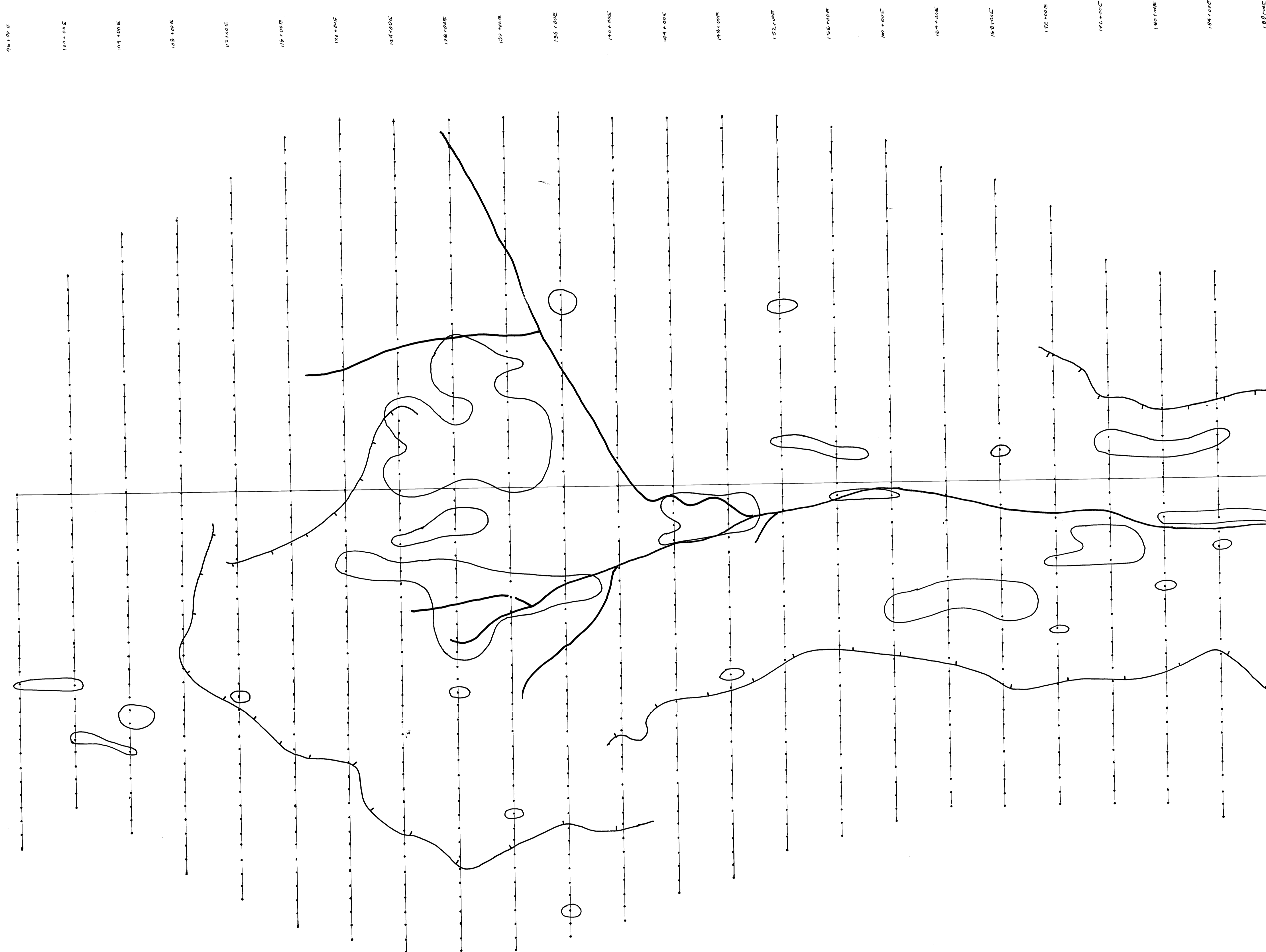
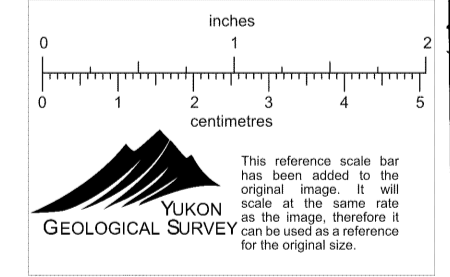


zinc contours 420 ppm.



CYPRUS ANVIL MINING CORPORATION

MONEY MINERAL CLAIM GROUP
ZINC CONTOURS - GRID SOILS
(CONTOURS at 420 ppm)



N.T.S. 105 G-8
SCALE: 1" = 400'

DATE: MARCH 1976
DRAWN: T. J. ADAMSON

010036

HF-2-485

105-G-8
Money Mineral Claim
Contours
March 1976
T. J. Adamson
105-G-8