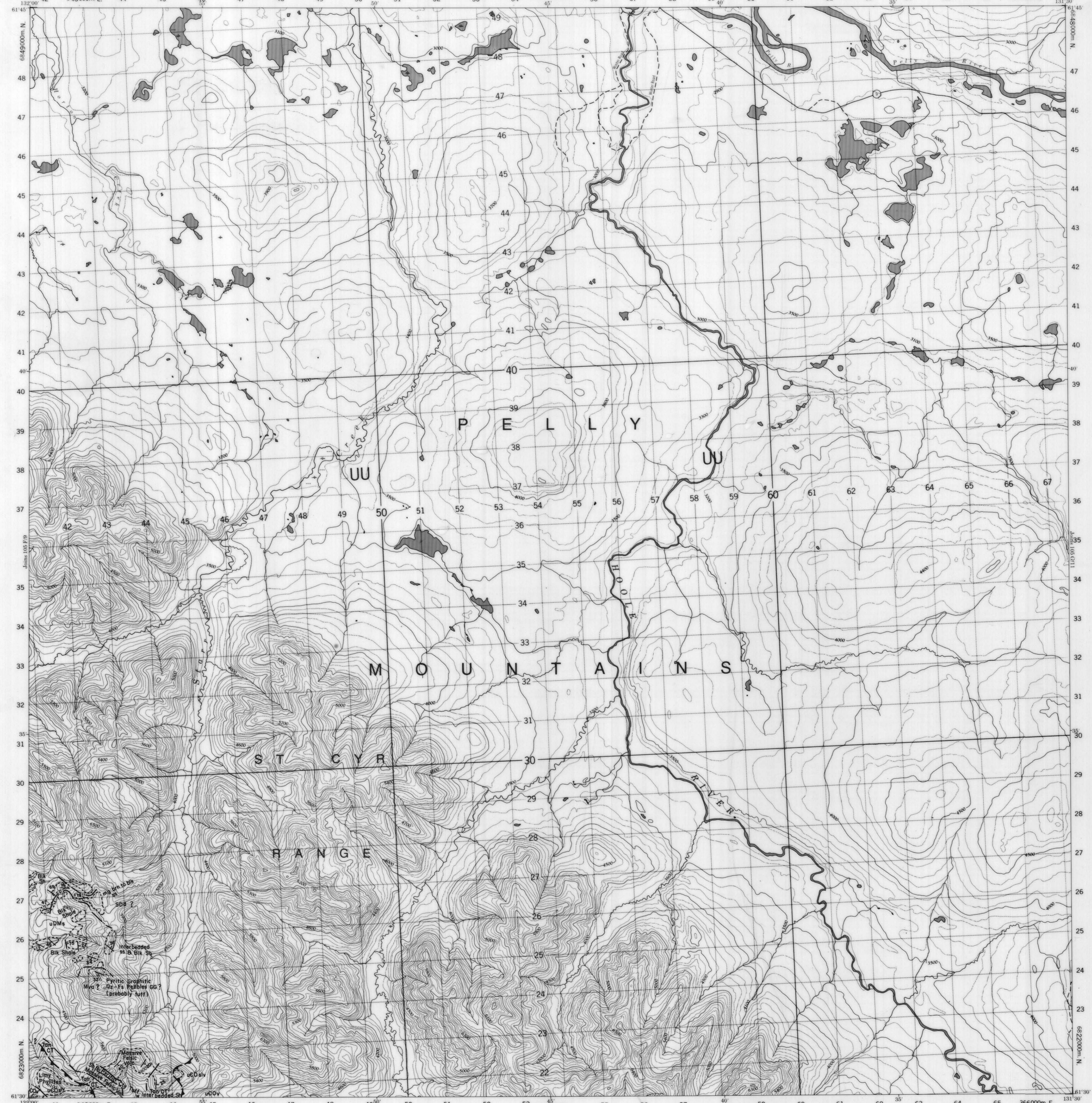
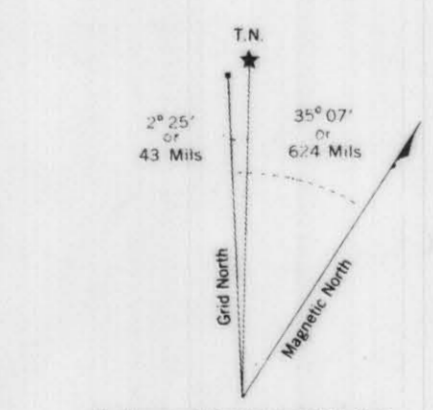
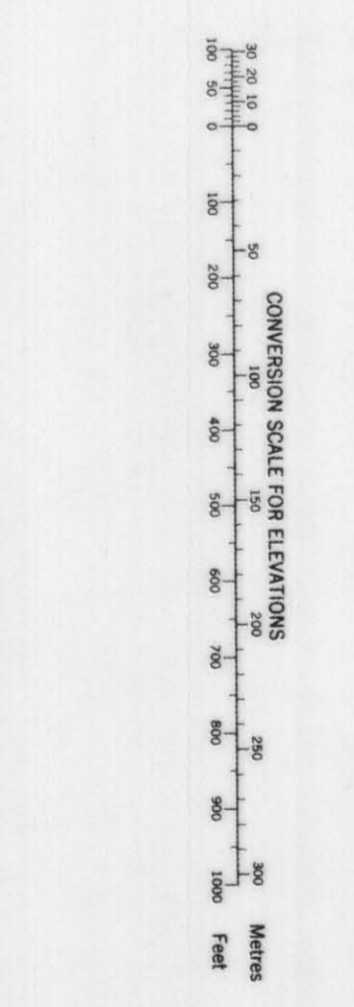


PROVISIONAL MAP 105 G/12 1:50,000 CANADA EDITION 1 CARTE PROVISOIRE 105 G/12

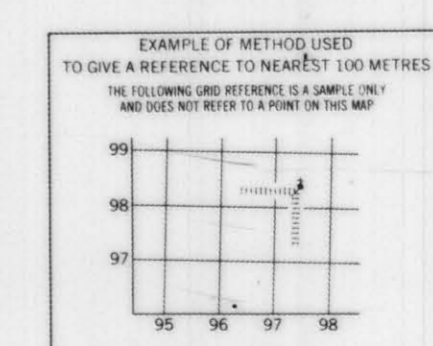
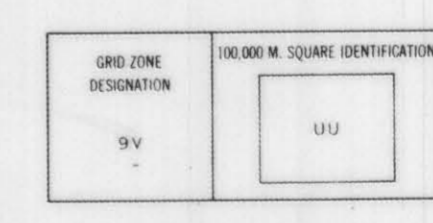


Refer to this map as: 105 G/12 1:50,000 105 G/12 SERIES A722



Use changes only to other numerical values. APPROXIMATE MEAN DECLINATION 1971 FOR CENTRE OF MAP. Annual change decreasing 4.7'

ONE THOUSAND METRE UNIVERSAL TRANSVERSE MERCATOR GRID ZONE 9



REFERENCE POINT: CULBERTSON (see above)

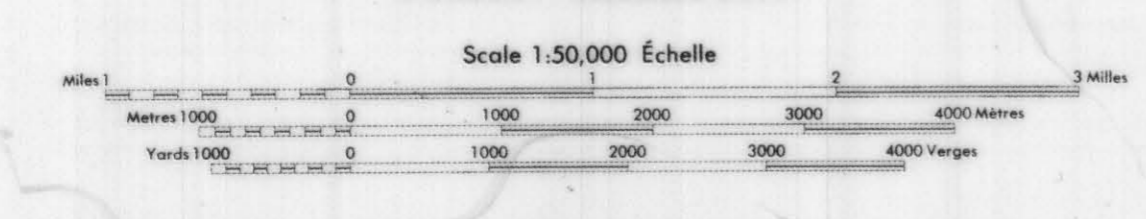
EASTING	Read number on grid line immediately to left of point	101
NORTHING	Read number on grid line immediately below point	101
EXAMPLE MILITARY GRID REFERENCE: 9U0904		

LEGEND

- BOUNDARY OF OUTCROP
- GEOLOGIC CONTACT DEFINED, ASSUMED
- BEDDING ATTITUDE
- FOLIATION ATTITUDE
- FAULT
- THRUST FAULT
- FOLD AXIS
- FOSSIL LOCALITY

Compiled by the SURVEYS AND MAPPING BRANCH, DEPARTMENT OF ENERGY, MINES AND RESOURCES. Produced by the MAPPING AND CARTOGRAPHY ESTABLISHMENT, DEPARTMENT OF NATIONAL DEFENCE.

Scale 1:50,000 Échelle

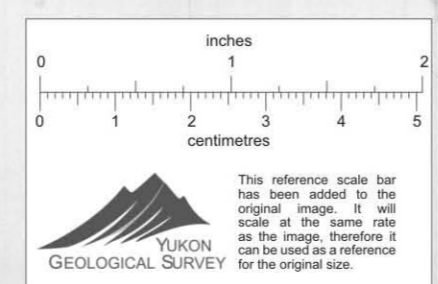


STARR CREEK YUKON TERRITORY

This Provisional Map is equivalent to a standard map of the same scale.

Cette carte provisoire équivaut à une carte régulière au même échelle.

Mappe qui la DIRECTION DES LEVÉS ET DE LA CARTOGRAPHIE, MINISTÈRE DE L'ÉNERGIE, DES MINES ET DES RESSOURCES.



CYPRUS ANVIL MINING CORPORATION

PELLY PROJECT  
REGIONAL GEOLOGY MAP: 105 G/12

REVISED: 010058

NTS: 105 G/12  
DRAWN BY: C. L. C.  
DATE: FEB. 24, 1978